



# CNC TOOLING SYSTEM CATALOG

High-performance solutions to optimize  
your machine performance

# MACHINE TOOL SOLUTIONS FOR EVERY APPLICATION



**SK COLLET  
CHUCKS**

PAGE 9



**ER COLLET  
CHUCKS**

PAGE 45



**VC COLLET  
CHUCKS**

PAGE 77



**MMC COLLET  
CHUCKS**

PAGE 89



**SHRINK  
FIT**

PAGE 99



**MILLING  
CHUCKS**

PAGE 133



**END MILL  
HOLDERS**

PAGE 157



**SHELL MILL  
HOLDERS**

PAGE 175



**DRILL CHUCKS &  
MORSE TAPERS**

PAGE 189



**TAP  
HOLDERS**

PAGE 199



**TG/DA COLLET  
CHUCKS**

PAGE 227



**ANGLE  
HEADS**

PAGE 243



**STUB MILL  
HOLDERS**

PAGE 251



**R8/5C/3J/16C  
COLLETS**

PAGE 257



**RETENTION  
KNOBS**

PAGE 267



## **KOKORO = HUMAN HEART**

Our company name, "NIKKEN," is derived from our desire to "always maintain the willingness to study patiently on a daily basis and contribute to future industries with technology and ideas."

# INTRODUCTION



## MISSION STATEMENT

Our mission is to provide the best value in machine tool accessories to help our customers become more profitable and promote manufacturing in North America. To Lyndex-Nikken, value means manufacturing quality products at a fair price.

We have built the widest product offering in the industry. As part of our mission, we also make it easy for manufacturers to fill their accessory needs while always focusing on return-on-investment. We achieve this by finding the best people and a fundamental principle of continuous improvement.

In this ever-changing market, our passion is to offer solutions to customer needs versus products. We pledge our unwavering stand on quality over price.



## NIKKEN WORLDWIDE



Lyndex-Nikken is represented by sales personnel and product specialists in 15 countries all around the globe. Wherever you may be, you will always get full support from our representatives. Each overseas sales branch has stocks for tooling and CNC Rotary Tables, and service engineers to look after the maintenance and service operation of our products.

### North and South Americas

- |           |   |                      |
|-----------|---|----------------------|
| 1. USA    | Lyndex-Nikken                           | Tel: (847) 367-4800  |
| 2. Mexico | Herramientas Lyndex-Nikken S.A. de C.V. | Tel: 52-55-8421-8421 |

### Europe and Middle East

- |            |   |                          |
|------------|---|--------------------------|
| 3. UK      | Nikken Kosakusho Europe, Ltd. - Euro Centre         | Tel: 44-(0)1709-366306   |
| 4. Germany | Nikken Deutschland GmbH                             | Tel: 49 731 9663397-0    |
| 5. Italy   | Vega International Tools SRL                        | Tel: 39-011-9497911      |
| 6. France  | Procomo-Nikken S.A.S                                | Tel: 33-(0)1-69 19 17 35 |
| 7. Sweden  | Nikken Scandinavia AB                               | Tel: 46-(0)303-440-600   |
| 8. Spain   | Cutting Tools, S.L.                                 | Tel: 34-902-820090       |
| 9. Turkey  | Nikken Kesici Takimlar San. Veuluslararası Tic A.S. | Tel: 90-(0)216-518-1010  |

### Asia

- |                 |                                      |                         |
|-----------------|--------------------------------------|-------------------------|
| 10. South Korea | Korea Nikken Ltd.                    | Tel: 82-(0)32-763-4461  |
| 11. China       | Shanghai Zhong Yan Trading Co., Ltd. | Tel: 86-(0)21-6210-2506 |
| 12. Singapore   | Nikken Kosakusho Asia PTE. Ltd.      | Tel: 65-6362-7980       |
| 13. Thailand    | Siam Nikken Co., Ltd.                | Tel: 66-(0)2-178-0503   |
| 14. Indonesia   | Pt. Nikken Kosakusho Indonesia       | Tel: 62-811-9980-807    |
| ** Japan        | Nikken Kosakusho Works Ltd.          | Tel: (072)869-5810      |

## NIKKEN ADVANTAGES



Carbonizing and Sub-Zero Treatment

### Nikken Advantages

Nikken high quality brand products have been patented in Japan and in many other countries. Featuring unique features, they are used all over the world and have been proving their efficiency for years and years, providing users with benefits unmatched by the competition.

### Sub Zero Treatment

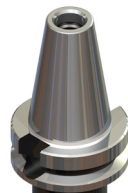
Nikken is the ONLY tool manufacturer that performs a sub-zero treatment to its tooling. All toolholders are subjects to ultra low temperature treatment of  $-90^{\circ}\text{C}$  after carburizing. This treatment removes residual austenite to form 100% martensite compositions to prevent deformation and deterioration over time. This is a good example of how Nikken pays attention to those aspects often hidden from view, and how we put our hearts into each and every tool.

### Taper Contact

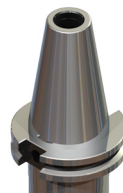
Nikken guarantees 80% of the taper contact ratio. It allows concentricity, run-out accuracy and stable machining, reduces damage to the M/C Spindle and extends tool life. Strong rigidity between machine spindle and toolholder eliminates potential fretting corrosion.

#### Nikken's Taper Characteristics:

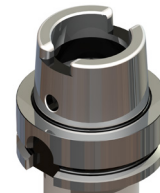
- Nickel Chrome 4150 alloy
- AT3 taper or better, 56 to 58 HRC
- Traverse Ground Taper
- Inspected by Prussian Blue oil method



BT Taper-Made to JIS B6339 standard



CT Taper-Made to ANSI/ASE B5.50 standard



HSK Taper-Made to ISO 12164 standard



NMTB Taper-Erickson Qualified



Tool Grinding Line



Horizontal Machining Centers



NC Lathe Line

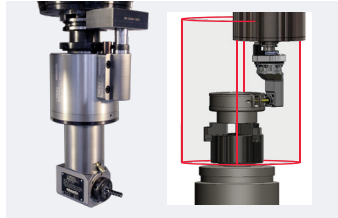


## PRODUCT OVERVIEW



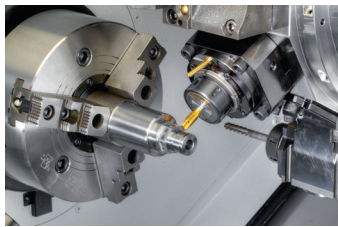
### High Productivity Advanced Toolholders

**Covering All Bases for Your Toolholder Needs.** Most accurate and precise Collet Chucks in the industry (guaranteed runout within .0002"). Nikken Milling Chucks are the strongest clamping Toolholder in the world with over 3500 ft-lbs of gripping force. Greater rigidity and higher accuracy allows for more aggressive material removal and part precision.



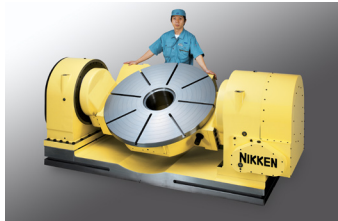
### Modular & Fixed Angle Heads

**Approaching Difficult Parts from All Angles.** Offered in multiple styles: slim, rigid, offset, adjustable and coolant through. 452 possible combinations using Lyndex-Nikken's Modular Angle Head system. Clearance and ATC verification done by 3D printed Angle Heads. Full 3D model support upon request.



### Live & Static Tools

**Turning Your Lathe Into a Milling Machine.** We offer both Live and Static Tools for a multitude of machine builders. Dual radial and thrust bearing design for added rigidity. Live and Static tools offered in coolant through, adjustable, and multi-output.



### 4th & 5th Axis Rotary Tables

**Reduced Setups, Increased Productivity, More Profits.** Ion-Nitride Worm Wheel and Carbide Worm Screw design extends longevity of rigidity and accuracy. 4 arc second repeatability for high precision and complex work pieces. Full installation and integration services available by Lyndex-Nikken technicians.



### Presettters & Measuring Equipment

**Rock Solid Precision.** Presettters utilize natural granite for the column and base ensuring the best thermal stability. Coupled with Elbo Controlli Nikken vision systems, our Presettters provides the highest level of repeatability and reproducibility making presettters ideal for most tool measuring and inspecting applications.



### Work Holding

**Chucks and clamping to minimize set-up and changeover times.** 2-jaw, 3-jaw, and specialty chucks offer durability and precision in a workholding solution with low maintenance, high performance, and are capable of clamping workpieces with uneven surfaces and a large range of diameters. Quick Change Flex Collet (QCFC) chucks can be used in a variety of turning center applications including high volume, low mix production shops for bar feeding or robot loading. Zero point clamping system provides process reliability and maximum flexibility.



### Automation

**EZ-Automation line of solutions - NO advanced robotics degree required.** User-friendly CNC machine tending, loading, and work changing for high mix, low volume production seamlessly integrates automation while controlling costs and easing job complexities. Automation of machine tracking and bottleneck analysis increases shop efficiency. Machine shops at any size can thrive with streamlined operations and improved processes to achieve a bottom line that reflects success.

## LYNDEX-NIKKEN SERVICE & SUPPORT

### Management & Operations

Integrity is our highest company goal that is achieved in different ways in each department. In operations, this means “keeping promises”. When a Lyndex-Nikken salesperson commits to do something, we want to make sure it happens! Our management team is willing to put whatever resources are needed to stand behind ALL commitments made to our customers.



### Outside Sales

The outside sales team is committed to providing you with the highest level of training, product knowledge, and customer service. Whether it's helping you close more deals, increasing your profit margins, or making your job easier, our product managers and sales representatives will do what is needed to make you more successful!



### Inside Sales

Committed to upholding the highest standard in customer service, the inside sales team provides support to qualify, quote and process orders. Working in conjunction with our outside sales team, our goal is to provide the best expedited sales experience with the utmost clarity.



### Engineering & Service

From product drawings to 3D models, clearance verifications to force calculations, the engineering team understands your manufacturing needs. We look forward to providing application support and hope to be a part of your success.



### Warehouse & Shipping

With over 22,000 individual part numbers in our system and nearly \$50 million worth of in-stock inventory, our warehouse team means serious business. 95% of items we carry get shipped out same day on an impressive average of 160 shipments per day!



### Lyndex-Nikken Mexico

Since our opening in 2013, we have been able to extend the same level of quality support to Mexico. One of our biggest tasks is providing services for transplant companies in Mexico from the U.S., Germany, Japan, and Korea. We offer full service of sales, engineering, and application support directly from our office.



# INTRODUCTION

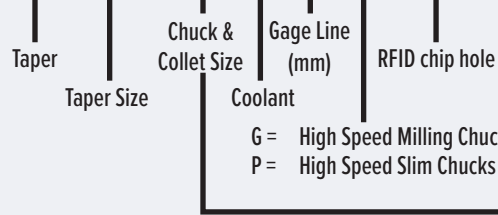


## LYNDEX-NIKKEN PART NUMBERS

We continue to utilize our original part numbering system for standard products (shown below) and have incorporated Nikken's part numbers for their product.

### NIKKEN EXAMPLE:

**NCAT40-SK25C-90UP-IDU**



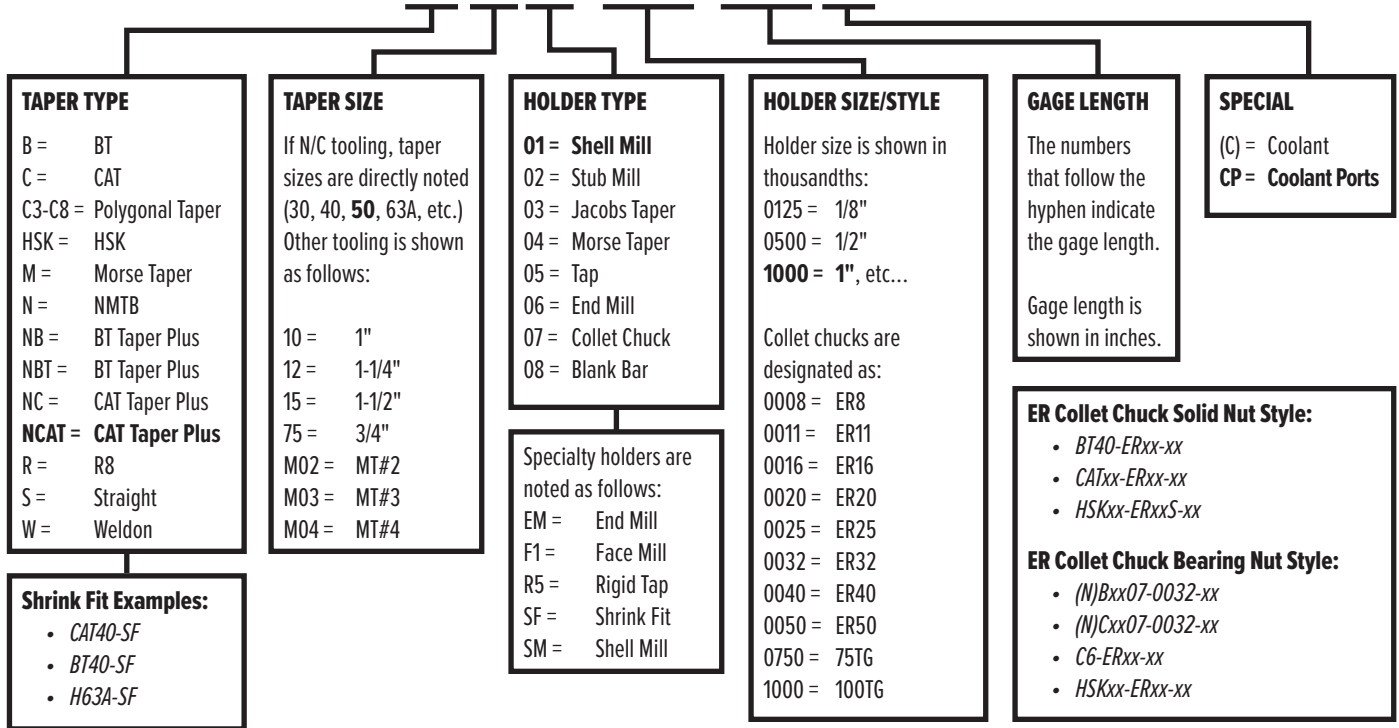
- C = Milling Chucks
- SK = SK Collet Chucks
- MMC = MMC Collet Chucks
- VC = VC Holder
- NPU = Drill Chucks

Here's how we derive our Lyndex toolholder part numbers.

Reviewing this numbering system will help you to quickly identify Lyndex toolholders in this catalog.

The example, item **NC5001-1000-4.00CP** is a **CAT50 Taper, 1" Shell Mill Holder x 4.00 Gage Length with Coolant Ports**.

**NC 50 01 - 1000 - 4.00 CP**



**Imperial (inch) sized collets** are shown with item number suffixes denoting 64ths of an inch:

*i.e.- Item 100-032 is a 1/2" 100TG collet*

**Metric sized collets** are shown with item number suffixes denoting its maximum capacity in thousandths of an inch:

*i.e.- Item E25-196 is a 4-5mm ER25 collet*

All specifications listed in this catalog are subject to change without notice.

## TABLE OF CONTENTS

<b>SK COLLET CHUCKS</b>		<b>9-44</b>		
SK Collet Chuck Features		10-11	Taper Plus - BT VC Collet Chucks	85
SK Collet Features		12	VCK Collets	86
Superior SK Coolant System		13	VC Coolant Collet System	87
CAT SK Collet Chucks		14-15	VC Collet Chuck Accessories	88
Taper Plus - CAT SK Collet Chucks		16, 18	<b>MMC COLLET CHUCKS</b>	
Taper Plus - CAT Slim Chuck Coolant High-Speed		17, 19		<b>89-98</b>
BT SK Collet Chucks		20-21	MMC Collet Chuck Features	90
BT SK Collet Chucks - High-Speed		22	CAT MMC Collet Chucks	91
Taper Plus - BT SK Collet Chucks		23	BT MMC Collet Chucks	92
Taper Plus - BT Slim Chuck Coolant High-Speed		24, 26	Taper Plus - CAT & BT MMC Collet Chucks	93
Taper Plus - BT Slim Chuck Coolant		25	HSK MMC Collet Chucks	94
HSK SK Collet Chucks		27	Polygonal & Straight Shank MMC Collet Chucks	95
HSK SK Collet Chucks - High-Speed		28-29	MMC Collets	96
Straight Shank SK Collet Chucks		30	VMK Collets	97
Polygonal Taper SK Collet Chucks		31	<b>SHRINK FIT</b>	
SK Collets		32-37		<b>99-132</b>
SK Coolant Collet System		38-40	Specifications & Equipment	100-101
SK Accessories & Adjust Screws		41-43	Shrink Fit Equipment	102
<b>ER COLLET CHUCKS</b>		<b>45-76</b>	Shrink Fit Unit Packages	103
ER Collet Chuck Features		46	Customize Your Equipment Package	104-105
ER Collet Features		47	CAT40 Shrink Fit Holders	106-107
ER Nut Features		48	CAT50 Shrink Fit Holders	108-109
CAT ER Collet Chucks		49-52	BT30 Shrink Fit Holders	110
BT ER Collet Chucks		53-55	BT40 Shrink Fit Holders	111-112
Taper Plus - CAT ER Collet Chucks		56-57	BT50 Shrink Fit Holders	113
Taper Plus - BT ER Collet Chucks		58-59	NCAT40 Shrink Fit Holders	114-116
HSK ER Collet Chucks		60-61	NCAT50 Shrink Fit Holders	117-118
NMTB & R8 ER Collet Chucks		62	NBT30 Shrink Fit Holders	119
ER Collet Chuck Extensions		63	NBT40 Shrink Fit Holders	120-121
Polygonal Taper ER Collet Chucks		64	HSK63A Shrink Fit Holders	122-123
ER Collets - Standard & Coolant		65-70	HSK100A Shrink Fit Holders	124-125
ER Tap Collets - Standard & Coolant		71-73	Polygonal Taper Shrink Fit Holders	126-129
ER Accessories		74-75	Shrink Fit Holder Accessories	130
<b>VC COLLET CHUCKS</b>		<b>77-88</b>	Straight Shank Extensions	131
VC Collet Chuck Features		78-79	<b>MILLING CHUCKS</b>	
CAT VC Collet Chucks		80		<b>133-156</b>
BT VC Collet Chucks		81	Milling Chuck Features	134-135
HSK VC Collet Chucks		82-83	Milling Chuck Collet System	136
Taper Plus - CAT VC Collet Chucks		84	Milling Chuck Coolant Collet System	137
			Why Upgrade?	138
			Taper Plus - Dual Contact Toolholders	139
			CAT Milling Chucks	140



## TABLE OF CONTENTS

CAT High-Speed Milling Chucks	141
Taper Plus - CAT Milling Chucks	142
Taper Plus - CAT High-Speed Milling Chucks	143
BT Milling Chucks	144
BT High-Speed Milling Chucks	145
Taper Plus - BT Milling Chucks	146
HSK Milling Chucks	147-148
NMTB Milling Chucks	149
Polygonal Taper Milling Chucks	150
KM Collets	151
NK Collets - Depth Adjustable	152
CCK Coolant Collet System	153-154
Milling Chuck Accessories	155

### END MILL HOLDERS 157-174

End Mill Holder Features	158
CAT End Mill Holders	159-162
Taper Plus - CAT End Mill Holders	163
BT End Mill Holders	164-166
Taper Plus - BT End Mill Holders	167
Polygonal Taper End Mill Holders	168
HSK End Mill Holders	169-170
NMTB End Mill Holders	171
R8 & Straight Shank End Mill Holders	172
End Mill Holder Accessories	173

### SHELL MILL HOLDERS 175-188

Shell Mill & Face Mill Holder Features	176
CAT Shell Mill Holders	177-178
CAT Face Mill Holders	178
Taper Plus - CAT Shell Mill Holders	179-180
Taper Plus - CAT Face Mill Holders	180
BT Shell Mill Holders	181-182
BT Face Mill Holders	182
Taper Plus - BT Shell Mill Holders	183
HSK Shell Mill Holders	184
Polygonal Taper Shell Mill Holders	185
NMTB Shell Mill Holders	186
R8 Shell Mill Holders	187
Shell Mill Holder Accessories	188

### DRILL CHUCKS & MORSE TAPER HOLDERS 189-198

Drill Chucks Features	190
CAT & BT Integral Keyless Drill Chucks	191
NMTB & HSK Drill Chucks	192
Drill Chuck Accessories	193
CAT & BT Jacobs® Taper Holders	194
NMTB & R8 Jacobs® Taper Holders	195
Jacobs® Drill Chuck Accessories	196
CAT Morse Taper Holders	197
R8 Morse Taper Holders	198

### TAP HOLDERS 199-226

Tap Holder Features	200
CAT Tap Holders	201-202
BT Tap Holders	203-204
HSK Tap Holders	205-206
Weldon Tap Holders	207-208
Straight Shank Tap Holders	209
Tap Collets	210-221
Tap Holder Accessories	222
Tapping - Technical Details	223
Tap Dimensional Data	224-225
Torque Control Tap Collet Torque Specifications	226

### TG/DA COLLET CHUCKS 227-242

TG Collet Chuck Features	228
DA Collet Chuck Features	229
CAT TG Collet Chucks	230
BT TG Collet Chucks	231
Straight Shank TG Collet Chucks	232
TG Collets	233-235
TG Accessories	236
CAT, BT & NMTB DA Collet Chucks	237
DA Collet Chuck Extension	238
DA Collets	239-240
DA Accessories	241

### ANGLE HEADS 243-250

Technical Features	244
Types of Fixed Angle Heads	245
Modular Angle Head Assembly	246

## TABLE OF CONTENTS

Modular Angle Head System	247
High Productivity Angle Heads	248
Engineering Support	249

### STUB MILL HOLDERS & BLANK BARS 251-256

Stub Mill Holder Features	252
CAT & BT Stub Mill Holders	253
CAT & BT Stub Mill Holder Accessories	254
CAT, BT & Taper Plus Blank Bars	255
NMTB & HSK Blank Bars	256

### R8/5C/3J/16C COLLETS 257-266

R8 Collets	258
5C Collets	259-260
5C Collet Accessories	261
3J Collets & Accessories	262-263
16C Collets & Accessories	264-265

### RETENTION KNOBS 267-272

Retention Knob Features	268
CAT Retention Knobs	269
BT Retention Knobs	270
Retention Knob Inquiry Form	271

### ACCESSORIES 273-284

Tool Clampers	274
Nikken Tool Clamper for HSK Tooling	275
ATC Alignment Kit	275
Pointfinder™	276
ZeroSetter™	277
Universal Micro Stand	278
Spindle Wipes	279
Test Bars	280
Momimen Carbide Indexable Tools	281-282
Chibimomi Carbide Indexable Tools	283-284

### TECHNICAL/INDEX 285-312

Lyndex-Nikken Product Warranty	286-287
Taper Specifications	288-290
SK Drill Chart	291-295
Index	296-312

### LYNDEX-NIKKEN

High Performance Live Tools	44
Advanced Toolholders	76
Automation	98
Shrink Fit In-Depth Training and Live Demos	132
NIKKEN X-Treme Milling Chuck	156
CNC Rotary Table Solutions	174
Torque Test Demos	242
Product Training Seminars	250
Quick Change Flex Collets	266
Lyndex-Nikken Products	272