

# SHRINK FIT



SHRINK FIT

SHRINK FIT



## SPECIFICATIONS & EQUIPMENT

# THE INDUSTRY'S HIGHEST QUALITY SHRINK FIT LINE

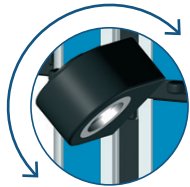
- High Speed: shrinking from 2 to 7 seconds
- Flexible Range: shrinking from 0.079" to 1.575" (2 to 40mm)

### Shrink and unshrink any type of cutter or tool

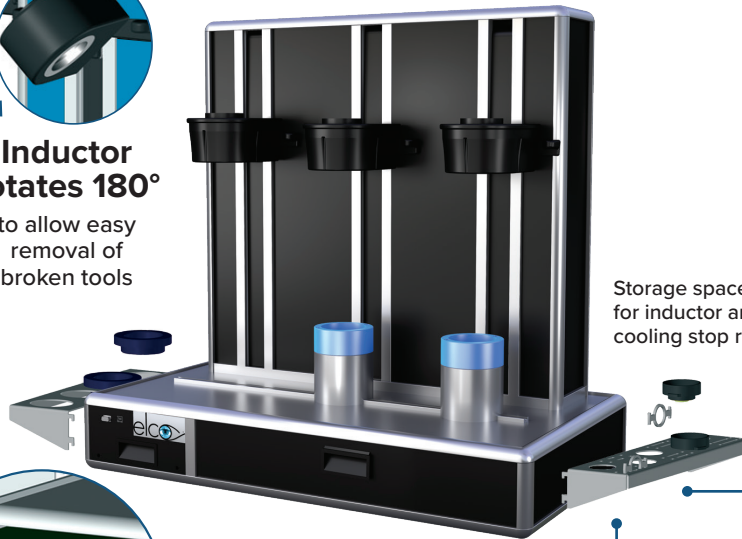
- HSS, Powdered Metal, Carbide, Steel, Heavy Metal, Shrink Fit extensions and reducers  
(Tool Shank must have h6 tolerance)

### FI-6

220V - Standard  
440V - Optional



**Inductor rotates 180°**  
to allow easy removal of broken tools



Storage space for inductor and cooling stop rings

### START.2

220V - Standard  
440V - Optional

**Auto shank size detection**  
for ease of use



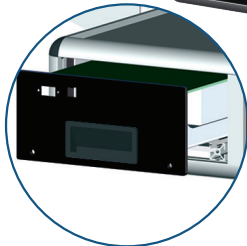
Operating instructions

Storage space for chuck holders

AFTER SALES-SERVICE

### Removable Electronics

- Compatible with Start.2 and Fi-6
- Unique slide-out Control Module allows for easy access and repair



OPTION

Foot pedal available allows for hands-free operation

Back stop presetting (SF-PS-KIT) to determine the tool gauge before shrinking



Scan here to see our Start.2 video!

### High Speed Cooling Unit (SF-START2-COOL-FAN40)

Cools tools less than 2 minutes with standard shop air pressure!  
Cooling system compatible with all cutting tool geometries to optimize cooling time cycle (3° slope, 4.5° slope, cylindrical)



### Remotely Controlled

- Compatible with Start.2 and Fi-6
- Shrink and Cooling unit linked and controlled by 1 pendant!



Registered models – Registered patents. Subject to change without notice.



## SPECIFICATIONS & EQUIPMENT

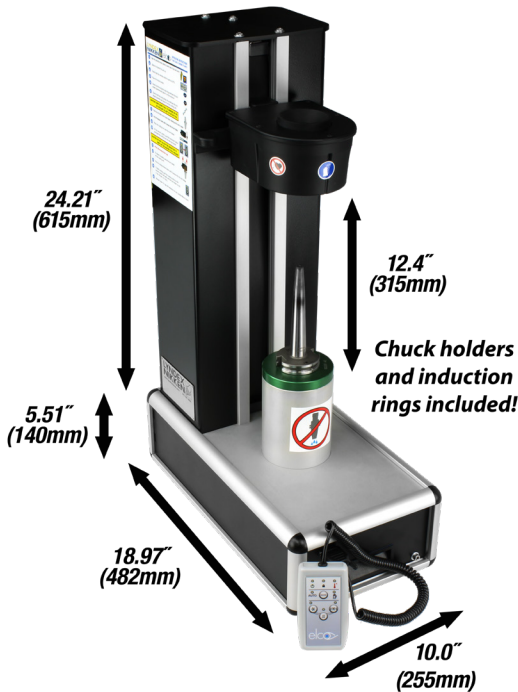
Functions	Start.2	Fi-6
<b>Specifications</b>	Part Number: SF-START2-UNIT	Part Number: SF-FI6-UNIT
Automatic tool size detection within the range of each inductor ring	■	■
Rapid heating cycle prevents heat transfer damage to the cutting tool and toolholder	■	■
Self regulated heating cycle allows for safe operation	■	■
Automatic or manual shrinking cycle time	■	■
Shrinking $\emptyset$ 2 to $\emptyset$ 40mm (.079"-1.575") with the same inductor	■	■
Large 64mm (2.52") inductor diameter provides flexibility for small to large cutting tools	■	■
Remote control pendant for ergonomic operation	■	■
Unique slide out control module allows for easy access and repair	■	■
Inductor rotates 180 degrees for broken cutter removal	■	■
Cooling system for the electronic board to allow high-speed shrinking		■
Power supply 380-480V/14kW/50-60Hz/3 phase	■	■
Power supply 200-240V/14kW/50-60Hz/3 phase	■	■

### Equipment

1 air cooling unit (70-90 PSI)	■	
2 air cooling units (70-90 PSI)	□	■
Shrinking of cutting diameters larger than shank diameters	□	□
Shrinking system for reductions	□	□
Back stop presetting unit	□	□
Storage space for chuck holders	■	■
Storage space for inductor stop rings and cooling stop rings	■	■
Storage space for cooling stop rings	□	
Foot pedal allows for hands-free operation	□	□

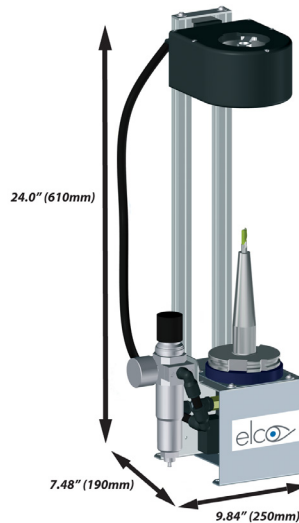
■ = Standard   □ = Option

## SHRINK FIT EQUIPMENT



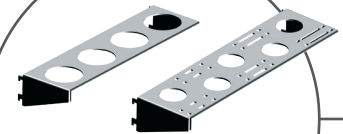
### START.2 SHRINK FIT UNIT

- The world's easiest shrink machine to operate.
- Provided with accessories for shrinking 0.079" - 1.575" (Ø 2 to Ø 40mm).
- Compact and Ergonomic Design.
- 1 cooling unit included, optional 2nd cooling unit can be connected.
- Shrink machine unit net weight - 41.9 lbs. (19 kg)

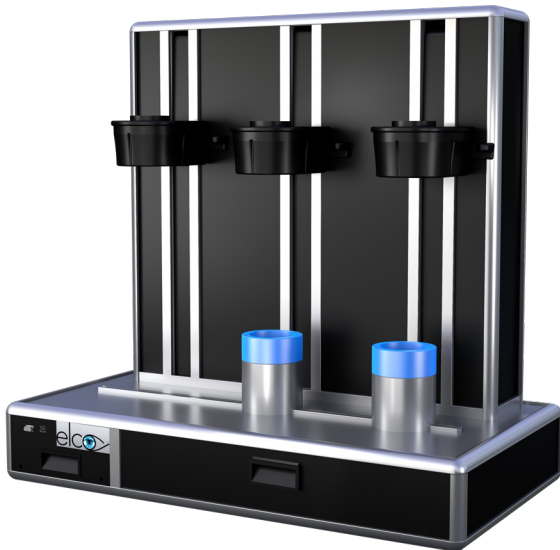


### COOLING UNIT

- Rapid Cooling - Tapered internal design allows for even distribution of high pressure air.
- Provided with accessories for cooling 0.079" - 1.575" (Ø 2 to Ø 40mm).
- Compressed air supply: 70 to 90 psi.
- Equipped with a filter and a pressure-reducing gauge to regulate the pressure and the air flow.
- Weight: 11 lbs. (5 kg)



### STORAGE RACKS (INCLUDED)



### FI-6 SHRINK FIT UNIT

- **Fi-6 - speed and safety in one**  
Speed - multiple cooling units to support high quantity tool assembly  
Safety - Guide Rail prevents operator from handling hot tools
- **The electronic board is cooled to allow high-speed shrinking.**
- Provided with accessories for shrinking & cooling 0.079" - 1.575" (Ø 2 to Ø 40mm).
- **Dimensions:**  
Length = 30.90" (785mm)  
Depth = 20.08" (510mm)  
Height = 34.45" (875mm)
- **Weight** (options excluded): 143.3 lbs. (65 kg)

### PRESETTING UNIT (OPTIONAL)

- Part Number: SF-PS-KIT
- For length presetting
- For Fi-6 shrink fit unit only
- Accuracy: ± 0,050mm
- Repeatability: ± 0,020mm
- Capability: tool shank 0.24" - 1.26" (Ø 6 to Ø 32mm)



# SHRINK FIT



## SHRINK FIT UNIT PACKAGES

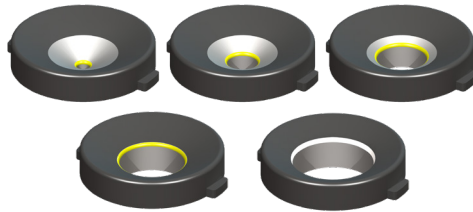
### START.2 SHRINK FIT PACKAGE Accessories Included

**SHRINK FIT UNIT AND COOLING UNIT**



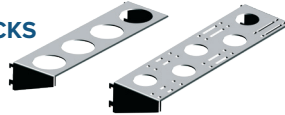
**5 PIECE INDUCTION RING SET**

5/64" - 3/16" (2-5mm)    1/4" - 1/2" (6-13mm)    9/16" - 7/8" (14-24mm)



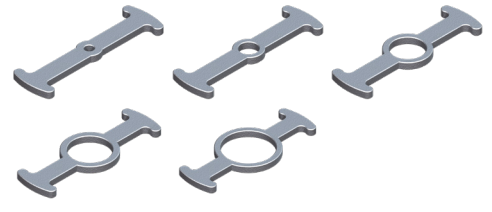
1" - 1.1/4" (25-32mm)    1.1/4" - 1.1/2" (33-40mm)

**STORAGE RACKS**



**5 PIECE COOLING BRACKET SET**

5/64" - 3/16" (2-5mm)    1/4" - 1/2" (6-13mm)    9/16" - 7/8" (14-24mm)



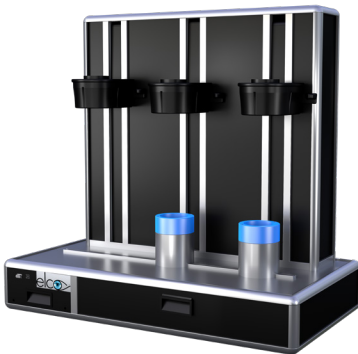
1" - 1.1/4" (25-32mm)    1.1/4" - 1.1/2" (33-40mm)

**CHUCK HOLDERS**  
(CAT40/50, BT30-50, HSK25-100)  
Included pair corresponds to selected Shrink Fit package



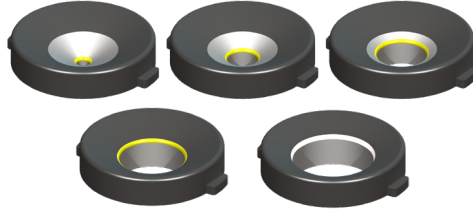
### Fi-6 SHRINK FIT PACKAGE Accessories Included

**SHRINK FIT UNIT**



**5 PIECE INDUCTION RING SET**

5/64" - 3/16" (2-5mm)    1/4" - 1/2" (6-13mm)    9/16" - 7/8" (14-24mm)



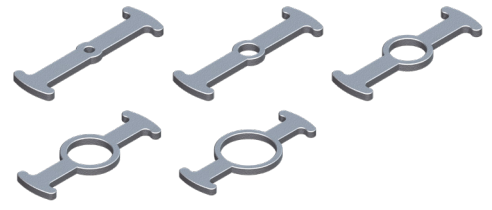
1" - 1.1/4" (25-32mm)    1.1/4" - 1.1/2" (33-40mm)

**STORAGE RACKS**



**5 PIECE COOLING BRACKET SET**

5/64" - 3/16" (2-5mm)    1/4" - 1/2" (6-13mm)    9/16" - 7/8" (14-24mm)



1" - 1.1/4" (25-32mm)    1.1/4" - 1.1/2" (33-40mm)

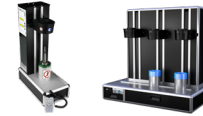
**CHUCK HOLDERS**  
(ISO30/40/50, HSK25-100, PSC4-8)  
Included pair corresponds to selected Shrink Fit package



SHRINK FIT

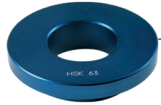
## CUSTOMIZE YOUR EQUIPMENT PACKAGE

### Accessories



Start.2

Fi-6



#### POT/CHUCK HOLDER

	PART NUMBER	Start.2	Fi-6
For HSK 25 chuck	SF-POT-HSK25	<input type="checkbox"/>	<input type="checkbox"/>
For HSK 32 chuck	SF-POT-HSK32	<input type="checkbox"/>	<input type="checkbox"/>
For HSK 40 / PSC4 chuck	SF-POT-HSK40/C4	<input type="checkbox"/>	<input type="checkbox"/>
For HSK 50 / PSC5 chuck	SF-POT-HSK50/C5	<input type="checkbox"/>	<input type="checkbox"/>
For HSK 63 chuck	SF-POT-HSK63	<input type="checkbox"/>	<input type="checkbox"/>
For HSK 80 / PSC8 chuck	SF-POT-HSK80/C8	<input type="checkbox"/>	<input type="checkbox"/>
For HSK 100 chuck	SF-POT-HSK100	<input type="checkbox"/>	<input type="checkbox"/>
For BT 30 chuck	SF-POT-#30	<input type="checkbox"/>	<input type="checkbox"/>
For CAT / BT 40 chuck	SF-POT-#40	<input type="checkbox"/>	<input type="checkbox"/>
For CAT / BT 50 chuck	SF-POT-#50	<input type="checkbox"/>	<input type="checkbox"/>
For PSC Polygonal chuck	SF-POT-C6	<input type="checkbox"/>	<input type="checkbox"/>

**Start.2:**  
Choose any 2 Pots

**Fi-6:**  
Choose any 3 Pots



#### HEATING RING

Ø 2 to Ø 5 (5/64" - 3/16")	SF-HEAT-RING-2-5	<input checked="" type="checkbox"/>	<input checked="" type="checkbox"/>
Ø 6 to Ø 13 (1/4" - 1/2")	SF-HEAT-RING-6-13	<input checked="" type="checkbox"/>	<input checked="" type="checkbox"/>
Ø 14 to Ø 24 (9/16" - 7/8")	SF-HEAT-RING-14-24	<input checked="" type="checkbox"/>	<input checked="" type="checkbox"/>
Ø 25 to Ø 32 (1" - 1 1/4")	SF-HEAT-RING-25-32	<input checked="" type="checkbox"/>	<input checked="" type="checkbox"/>
Ø 33 to Ø 40 (1 1/4" - 1 1/2")	SF-HEAT-RING-33-40	<input checked="" type="checkbox"/>	<input checked="" type="checkbox"/>



#### SPLIT HEATING RING

Ø 2 to Ø 5 (5/64" - 3/16")	SF-HEAT-RING-2-5(SP)	<input type="checkbox"/>	<input type="checkbox"/>
Ø 6 to Ø 13 (1/4" - 1/2")	SF-HEAT-RING-6-13(SP)	<input type="checkbox"/>	<input type="checkbox"/>
Ø 14 to Ø 24 (9/16" - 7/8")	SF-HEAT-RING-14-24(SP)	<input type="checkbox"/>	<input type="checkbox"/>
Ø 25 to Ø 32 (1" - 1 1/4")	SF-HEAT-RING-25-32(SP)	<input type="checkbox"/>	<input type="checkbox"/>
Ø 33 to Ø 40 (1 1/4" - 1 1/2")	SF-HEAT-RING-33-40(SP)	<input type="checkbox"/>	<input type="checkbox"/>



#### ADDITIONAL COOLING UNIT

Cooling unit for Fi-6			<input checked="" type="checkbox"/>
-----------------------	--	--	-------------------------------------



#### COOLING BRACKETS

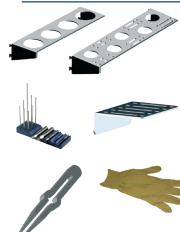
Ø 2 to Ø 5 (5/64" - 3/16")	SF-COOL-BRACKET-2-6	<input checked="" type="checkbox"/>	<input checked="" type="checkbox"/> x2
Ø 6 to Ø 13 (1/4" - 1/2")	SF-COOL-BRACKET-6-14	<input checked="" type="checkbox"/>	<input checked="" type="checkbox"/> x2
Ø 14 to Ø 24 (9/16" - 7/8")	SF-COOL-BRACKET-14-25	<input checked="" type="checkbox"/>	<input checked="" type="checkbox"/> x2
Ø 25 to Ø 32 (1" - 1 1/4")	SF-COOL-BRACKET-25-33	<input checked="" type="checkbox"/>	<input checked="" type="checkbox"/> x2
Ø 33 to Ø 40 (1 1/4" - 1 1/2")	SF-COOL-BRACKET-33-41	<input checked="" type="checkbox"/>	<input checked="" type="checkbox"/> x2



#### SHRINKING WITH REDUCTIONS

Set up fixture Reduction Sleeve	SF-REDUCTION-FIXTURE	<input type="checkbox"/>	<input type="checkbox"/>
---------------------------------	----------------------	--------------------------	--------------------------

#### VARIOUS ACCESSORIES





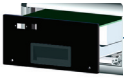

Storage space for tools	SF-RACK-CUTTER		<input type="checkbox"/>
Storage space for chuck holders	SF-RACK-POT		<input type="checkbox"/>
Storage space for inductor & cooling stop rings	SF-RACK-HEAT-RING		<input type="checkbox"/>
Storage space for cooling stop rings	SF-RACK-COOL-STOP	<input type="checkbox"/>	
A pair of Kevlar gloves	SF-GLOVES	<input checked="" type="checkbox"/>	<input checked="" type="checkbox"/>
Plier for gripping small diameters	SF-PLIERS	<input type="checkbox"/>	<input type="checkbox"/>

■ = Standard    □ = Option








# SHRINK FIT



## CUSTOMIZE YOUR EQUIPMENT PACKAGE

	PART NUMBER	Start.2	Fi-6	
<b>SHRINK FIT CABINET</b>				
Stainless Steel Trolley	SF-CABINET	<input type="checkbox"/>		
<b>INDUCTOR</b>				
Replacement Inductor	SF-INDUCTOR	<input type="checkbox"/>	<input type="checkbox"/>	
<b>ELECTRONIC BOARD</b>				
Motherboard 380 / 480V	SF-MOTHER-BOARD-380	<input type="checkbox"/>	<input type="checkbox"/>	
Motherboard 200 / 240 V	SF-MOTHER-BOARD	<input type="checkbox"/>	<input type="checkbox"/>	
<b>REMOTE CONTROL</b>				
Remote control	SF-CONTROL	<input type="checkbox"/>	<input type="checkbox"/>	

## Presetting

	PART NUMBER	Start.2	Fi-6	
<b>PRESETTING UNITS</b>				
Presetting unit by back-stop (Accessories : please contact us)	SF-PS-UNIT	<input type="checkbox"/>		
Presetting unit + 3 rods + ruler + indicator + one set of guides and guide holder	SF-PS-KIT		<input type="checkbox"/>	
<b>ACCESSORIES FOR PRESETTING UNITS</b>				
Set of tools guides Ø 1/4", 5/16", 3/8", 1/2", 5/8", 3/4"	SF-PS-TOOLGUIDE-KIT		<input type="checkbox"/>	
Presetting guides holder	SF-PS-GUIDE-HOLDER		<input type="checkbox"/>	
Presetting Clip Kit (19 sizes included in 1 kit)	SF-SPRING-CLIP-KIT		<input type="checkbox"/>	<div style="border: 1px solid black; padding: 5px;"> <b>Spring Clip Kit -19 sizes in 1 kit:</b>                      MM - 3, 4, 5, 6, 8, 10, 12, 16, 20, 25                      INCH- 1/8, 3/16, 1/4, 5/16, 3/8,                      1/2, 5/8, 3/4, 1.0                 </div>
Adapter for BT30 presetting	SF-PS-BT30-ADAPTER		<input type="checkbox"/>	
Adapter for CAT / BT40 presetting	SF-PS-CT/BT40-ADPTR		<input type="checkbox"/>	
Adapter for BT45 presetting	SF-PS-CT/BT45-ADPTR		<input type="checkbox"/>	
Adapter for CAT / BT50 presetting	SF-PS-CT/BT50-ADPTR		<input type="checkbox"/>	
Tool guide Ø 1/4" *	SF-PS-GUIDE-6M-0250		<input type="checkbox"/>	 Ruler   Dial indicator   Tool guide   Rod   Adapter
Tool guide Ø 5/16" *	SF-PS-GUIDE-8M-0312		<input type="checkbox"/>	
Tool guide Ø 3/8" *	SF-PS-GUIDE-10M-0375		<input type="checkbox"/>	
Tool guide Ø 1/2" *	SF-PS-GUIDE-14M-0500		<input type="checkbox"/>	
Tool guide Ø 5/8" *	SF-PS-GUIDE-16M-0625		<input type="checkbox"/>	
Tool guide Ø 3/4" *	SF-PS-GUIDE-20M-0750		<input type="checkbox"/>	
Tool guide Ø 1" *	SF-PS-GUIDE-25M-1000		<input type="checkbox"/>	
Tool guide Ø 1 1/4" *	SF-PS-GUIDE-32M-1250		<input type="checkbox"/>	
Compact rod	SF-PS-COMPACT-ROD		<input type="checkbox"/>	
Standard & mold range rod	SF-PS-STD-ROD		<input type="checkbox"/>	
Rod (length 160 mm)	SF-PS-STD-ROD-LONG		<input type="checkbox"/>	
Ruler 300 mm	SF-PS-RULER		<input type="checkbox"/>	
Dial indicator	SF-PS-DIAL		<input type="checkbox"/>	

\*Metric Available 6-32mm

■ = Standard    □ = Option    ■ = Replacement Part

## CAT40 SHRINK FIT HOLDERS

### FEATURES

- Excellent surface finish, extreme gripping and ideal for high-speed applications
- Pre-balanced up to 25,000 RPM
- Increase cutting tool life, material removal rate and workpiece accuracy
- All shrink fit holders 6mm (1/4") and above include a backup screw

**MATERIAL:** H11 High Alloy Steel **HARDNESS:** 52 HRc tempered



**T.I.R.**  
0.0001" in ID bore



**Speed**  
Up to 25,000 rpm



**Coolant-Thru**  
Plugable Coolant Ports



Please note that the maximum RPM listed in our catalog may vary depending on the toolholder shank, weight, balanceability and the G rating.

### STANDARD

Part Number	d	L	L1	D	D1	D2	Max. RPM	Fig.
CAT40-SF0125-3.15	1/8"	3.15"	2.00"	0.39"	0.71"		25K	1
CAT40-SF0125-5.12	1/8"	5.12"	1.50"	0.39"	0.63"	0.82"	25K	2
CAT40-SF0187-3.15	3/16"	3.15"	1.50"	0.39"	0.63"		25K	1
CAT40-SF0187-5.12	3/16"	5.12"	1.50"	0.39"	0.63"	0.82"	25K	2
CAT40-SF3-80	3mm	6.30"	2.00"	0.39"	0.71"		25K	1
CAT40-SF4-80	4mm	6.30"	1.75"	0.39"	0.67"		25K	1

### STANDARD COOLANT PORTED

Part Number	d	L	L1	D	D1	D2	Max. RPM	Fig.
CAT40-SF0250-3.15CP	1/4"	3.15"	1.50"	0.83"	1.06"		25K	1
CAT40-SF0250-5.12CP	1/4"	5.12"	1.50"	0.83"	1.06"	1.26"	25K	2
CAT40-SF0312-3.15CP	5/16"	3.15"	1.50"	0.83"	1.06"		25K	1
CAT40-SF0375-3.15CP	3/8"	3.15"	2.00"	0.95"	1.26"		25K	1
CAT40-SF0375-5.12CP	3/8"	5.12"	2.00"	0.95"	1.26"	1.42"	25K	2
CAT40-SF0437-3.15CP	7/16"	3.15"	2.00"	0.95"	1.26"		25K	1
CAT40-SF0500-3.15CP	1/2"	3.15"	2.00"	0.95"	1.26"		25K	1
CAT40-SF0500-5.12CP	1/2"	5.12"	2.00"	0.95"	1.26"	1.42"	25K	2
CAT40-SF0625-3.15CP	5/8"	3.15"	1.75"	1.06"	1.34"		25K	1
CAT40-SF0625-5.12CP	5/8"	5.12"	1.75"	1.06"	1.34"	1.51"	25K	2
CAT40-SF0750-3.15CP	3/4"	3.15"	2.23"	1.30"	1.65"		25K	1
CAT40-SF0750-5.12CP	3/4"	5.12"	2.25"	1.30"	1.65"	1.79"	25K	2
CAT40-SF1000-3.94CP	1"	3.94"	2.25"	1.73"	2.09"		25K	1
CAT40-SF1000-5.12CP	1"	5.12"	2.25"	1.73"	2.09"	2.22"	25K	2
CAT40-SF6-80CP	6mm	3.15"	1.50"	0.83"	1.06"		25K	1
CAT40-SF8-80CP	8mm	3.15"	1.50"	0.83"	1.06"		25K	1
CAT40-SF10-80CP	10mm	3.15"	1.98"	0.95"	1.26"		25K	1
CAT40-SF12-80CP	12mm	3.15"	2.00"	0.95"	1.26"		25K	1
CAT40-SF14-80CP	14mm	3.15"	1.75"	1.06"	1.34"		25K	1
CAT40-SF16-80CP	16mm	3.15"	1.75"	1.06"	1.34"		25K	1
CAT40-SF20-80CP	20mm	3.15"	2.23"	1.30"	1.65"		25K	1
CAT40-SF25-100CP	25mm	3.94"	2.25"	1.73"	2.09"		25K	1

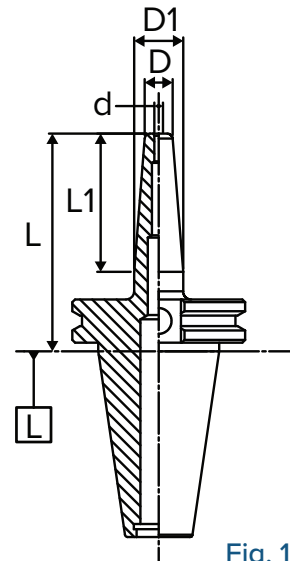


Fig. 1

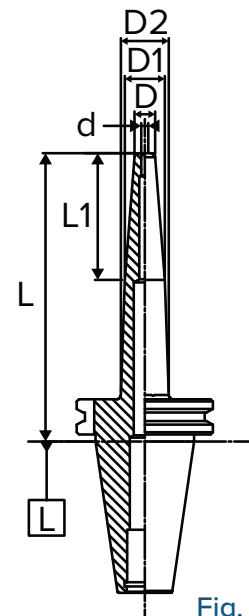
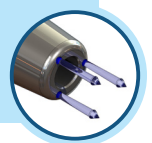


Fig. 2

"CP" stands for "Coolant Ported". Shrink fit is center-thru coolant capable. Contact us for additional coolant options.



# SHRINK FIT



## CAT40 SHRINK FIT HOLDERS

### EXTENDED

Part Number	d	L	L1	D	D1	D2	Max. RPM	Fig.
CAT40-SF0125-6.30	1/8"	6.30"	1.50"	0.39"	0.63"	0.91"	25K	3
CAT40-SF3-160	3mm	6.30"	1.50"	0.39"	0.63"	0.91"	25K	3

### EXTENDED COOLANT PORTED

Part Number	d	L	L1	D	D1	D2	Max. RPM	Fig.
CAT40-SF0250-6.30CP	1/4"	6.30"	1.50"	0.83"	1.06"	1.34"	25K	3
CAT40-SF0375-6.30CP	3/8"	6.30"	2.00"	0.95"	1.26"	1.50"	25K	3
CAT40-SF0500-6.30CP	1/2"	6.30"	2.00"	0.95"	1.26"	1.50"	25K	3
CAT40-SF0625-6.30CP	5/8"	6.30"	1.75"	1.06"	1.34"	1.59"	25K	3
CAT40-SF0750-6.30CP	3/4"	6.30"	2.25"	1.30"	1.65"	1.87"	25K	3
CAT40-SF1000-6.30CP	1"	6.30"	2.25"	1.73"	2.09"	2.31"	25K	3
CAT40-SF6-160CP	6mm	6.30"	1.50"	0.83"	1.06"	1.34"	25K	3
CAT40-SF8-160CP	8mm	6.30"	1.50"	0.83"	1.06"	1.34"	25K	3
CAT40-SF10-160CP	10mm	6.30"	2.00"	0.95"	1.26"	1.50"	25K	3
CAT40-SF12-160CP	12mm	6.30"	2.00"	0.95"	1.26"	1.50"	25K	3
CAT40-SF16-160CP	16mm	6.30"	1.75"	1.06"	1.34"	1.59"	25K	3
CAT40-SF20-160CP	20mm	6.30"	2.25"	1.30"	1.65"	1.87"	25K	3
CAT40-SF25-160CP	25mm	6.30"	2.25"	1.73"	2.09"	2.31"	25K	3

### MOLD TYPE

Part Number	d	L	L1	D	D1	Max. RPM	Fig.
CAT40-SF0125-3.15MT	1/8"	3.15"	1.75"	0.35"	0.63"	25K	1
CAT40-SF0125-6.30MT	1/8"	6.30"	3.25"	0.35"	0.87"	25K	1
CAT40-SF0250-3.15MT	1/4"	3.15"	2.25"	0.47"	0.83"	25K	1
CAT40-SF0250-6.30MT	1/4"	6.30"	3.75"	0.47"	1.06"	25K	1
CAT40-SF0375-6.30MT	3/8"	6.30"	4.00"	1.26"	0.63"	25K	1
CAT40-SF0500-3.15MT	1/2"	3.15"	2.00"	0.71"	1.06"	25K	1
CAT40-SF0625-3.15MT	5/8"	3.15"	2.00"	0.94"	1.32"	25K	1

Note:

- Mold Type & Rigid Type Shrink Fit Holders can be made as special.

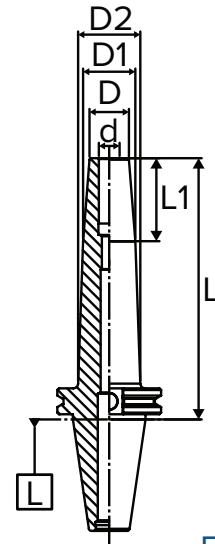
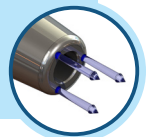


Fig. 3



SHRINK FIT

"CP" stands for "Coolant Ported". Shrink fit is center-thru coolant capable. Contact us for additional coolant options.



## CAT50 SHRINK FIT HOLDERS

### FEATURES

- Excellent surface finish, extreme gripping and ideal for high-speed applications
- Pre-balanced up to 25,000 RPM
- Increase cutting tool life, material removal rate and workpiece accuracy
- All shrink fit holders 6mm (1/4") and above include a backup screw

**MATERIAL:** H11 High Alloy Steel **HARDNESS:** 52 HRc tempered



**T.I.R.**  
0.0001" in ID bore



**Speed**  
Up to 25,000 rpm



**Coolant-Thru**  
Plugable Coolant Ports



Please note that the maximum RPM listed in our catalog may vary depending on the toolholder shank, weight, balanceability and the G rating.

### STANDARD

Part Number	d	L	L1	D	D1	Max. RPM	Fig.
CAT50-SF0125-3.15	1/8"	3.15"	2.00"	0.39"	0.71"	25K	1
CAT50-SF3-80	3mm	3.15"	2.00"	0.39"	0.71"	25K	1

### STANDARD COOLANT PORTED

Part Number	d	L	L1	D	D1	D2	Max. RPM	Fig.
CAT50-SF0250-3.15CP	1/4"	3.15"	1.50"	0.83"	1.06"		25K	1
CAT50-SF0250-5.12CP	1/4"	5.12"	1.51"	0.83"	1.06"	1.26"	25K	2
CAT50-SF0375-3.15CP	3/8"	3.15"	2.00"	0.95"	1.26"		25K	1
CAT50-SF0375-5.12CP	3/8"	5.12"	2.00"	0.95"	1.26"	1.42"	25K	2
CAT50-SF0500-3.15CP	1/2"	3.15"	2.00"	0.95"	1.26"		25K	1
CAT50-SF0500-5.12CP	1/2"	5.12"	2.00"	0.95"	1.26"	1.42"	25K	2
CAT50-SF0625-3.15CP	5/8"	3.15"	1.75"	1.06"	1.34"		25K	1
CAT50-SF0625-5.12CP	5/8"	5.12"	1.75"	1.06"	1.34"	1.51"	25K	2
CAT50-SF0750-3.15CP	3/4"	3.15"	2.22"	1.30"	1.65"		25K	1
CAT50-SF0750-5.12CP	3/4"	5.12"	2.25"	1.30"	1.65"	1.79"	25K	2
CAT50-SF1000-3.94CP	1"	3.94"	2.25"	1.73"	2.09"		25K	1
CAT50-SF1000-5.12CP	1"	5.12"	2.25"	1.73"	2.09"	2.22"	25K	2
CAT50-SF1250-3.94CP	1.1/4"	3.94"	2.25"	1.73"	2.09"		25K	1
CAT50-SF1250-5.12CP	1.1/4"	5.12"	2.25"	1.73"	2.09"	2.22"	25K	2
CAT50-SF6-80CP	6mm	3.15"	1.50"	0.83"	1.06"		25K	1
CAT50-SF8-80CP	8mm	3.15"	1.50"	0.83"	1.06"		25K	1
CAT50-SF10-80CP	10mm	3.15"	2.00"	0.95"	1.26"		25K	1
CAT50-SF12-80CP	12mm	3.15"	2.00"	0.95"	1.26"		25K	1
CAT50-SF16-80CP	16mm	3.15"	1.75"	1.06"	1.34"		25K	1
CAT50-SF25-100CP	25mm	3.94"	2.25"	1.73"	2.09"		25K	1

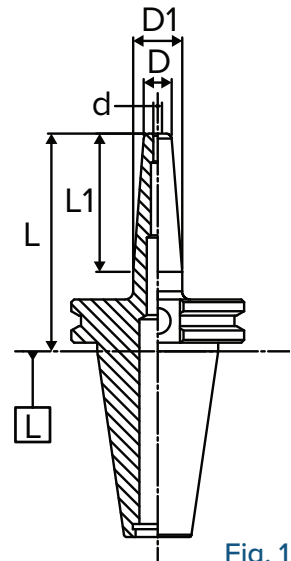


Fig. 1

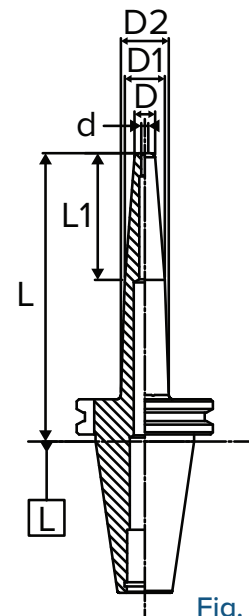
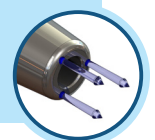


Fig. 2

"CP" stands for "Coolant Ported". Shrink fit is center-thru coolant capable. Contact us for additional coolant options.



# SHRINK FIT



## CAT50 SHRINK FIT HOLDERS

### EXTENDED

Part Number	d	L	L1	D	D1	D2	Max. RPM	Fig.
CAT50-SF0125-6.30	1/8"	6.30"	2.00"	0.39"	0.71"	0.95"	25K	3
CAT50-SF3-160	3mm	6.30"	2.00"	0.39"	0.71"	0.95"	25K	3

### EXTENDED COOLANT PORTED

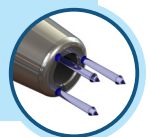
Part Number	d	L	L1	D	D1	D2	Max. RPM	Fig.
CAT50-SF0250-6.30CP	1/4"	6.30"	1.51"	0.83"	1.06"	1.34"	25K	3
CAT50-SF0375-6.30CP	3/8"	6.30"	2.00"	0.95"	1.26"	1.50"	25K	3
CAT50-SF0500-6.30CP	1/2"	6.30"	2.00"	0.95"	1.26"	1.50"	25K	3
CAT50-SF0625-6.30CP	5/8"	6.30"	1.75"	1.06"	1.34"	1.59"	25K	3
CAT50-SF0750-6.30CP	3/4"	6.30"	2.25"	1.30"	1.65"	1.87"	25K	3
CAT50-SF1000-6.30CP	1"	6.30"	2.25"	1.73"	2.09"	2.30"	25K	3
CAT50-SF1250-6.30CP	1-1/4"	6.30"	2.25"	1.73"	2.09"	2.30"	25K	3
CAT50-SF6-160CP	6mm	6.30"	1.50"	0.83"	1.06"	1.34"	25K	3
CAT50-SF8-160CP	8mm	6.30"	1.50"	0.83"	1.06"	1.34"	25K	3
CAT50-SF10-160CP	10mm	6.30"	2.00"	0.95"	1.26"	1.50"	25K	3
CAT50-SF12-160CP	12mm	6.30"	2.00"	0.95"	1.26"	1.50"	25K	3
CAT50-SF16-160CP	16mm	6.30"	1.75"	1.06"	1.34"	1.59"	25K	3
CAT50-SF20-160CP	20mm	6.30"	2.25"	1.30"	1.65"	1.87"	25K	3
CAT50-SF25-160CP	25mm	6.30"	2.25"	1.73"	2.09"	2.30"	25K	3
CAT50-SF32-160CP	32mm	6.30"	2.25"	1.73"	2.09"	2.30"	25K	3



Fig. 3

SHRINK FIT

"CP" stands for "Coolant Ported". Shrink fit is center-thru coolant capable. Contact us for additional coolant options.



## BT30 SHRINK FIT HOLDERS

### FEATURES

- Excellent surface finish, extreme gripping and ideal for high-speed applications
- Pre-balanced up to 25,000 RPM
- Increase cutting tool life, material removal rate and workpiece accuracy
- All shrink fit holders 6mm (1/4") and above include a backup screw

**MATERIAL:** H11 High Alloy Steel **HARDNESS:** 52 HRc tempered



**T.I.R.**  
0.0001" in ID bore



**Speed**  
Up to 25,000 rpm



**Coolant-Thru**  
Plugable Coolant Ports

**MILLING**



**REAMING**



**DRILLING**



*Please note that the maximum RPM listed in our catalog may vary depending on the toolholder shank, weight, balanceability and the G rating.*

### STANDARD

Part Number	d	L	L1	D	D1	D2	Max. RPM	Fig.
<b>BT30-SF0125-3.15</b>	1/8"	3.15"	2.00"	0.39"	0.71"	-	25K	4
<b>BT30-SF0125-6.30</b>	1/8"	6.30"	2.00"	0.39"	0.71"	0.94"	25K	5
<b>BT30-SF0187-3.15</b>	3/16"	3.15"	1.50"	0.39"	0.63"	-	25K	4

### STANDARD COOLANT PORTED

Part Number	d	L	L1	D	D1	Max. RPM	Fig.
<b>BT30-SF0250-3.15CP</b>	1/4"	3.15"	1.50"	0.83"	1.06"	25K	4
<b>BT30-SF0375-3.15CP</b>	3/8"	3.15"	1.75"	0.95"	1.26"	25K	4
<b>BT30-SF0500-3.15CP</b>	1/2"	3.15"	2.00"	0.95"	1.26"	25K	4
<b>BT30-SF0625-3.15CP</b>	5/8"	3.15"	1.75"	1.06"	1.34"	25K	4
<b>BT30-SF0750-3.15CP</b>	3/4"	3.15"	1.50"	1.30"	1.54"	25K	4

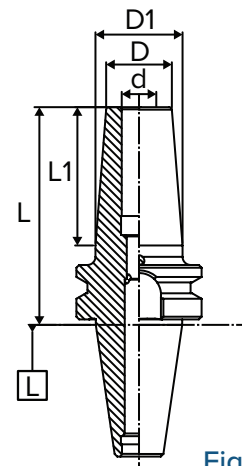


Fig. 4

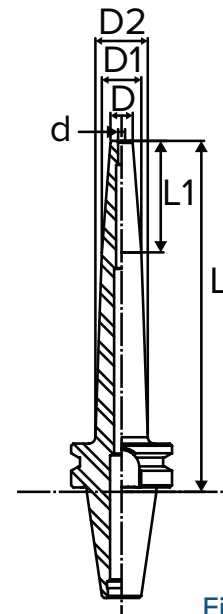
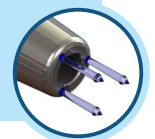


Fig. 5

"CP" stands for "Coolant Ported". Shrink fit is center-thru coolant capable. Contact us for additional coolant options.



# SHRINK FIT



## BT40 SHRINK FIT HOLDERS

### FEATURES

- Excellent surface finish, extreme gripping and ideal for high-speed applications
- Pre-balanced up to 25,000 RPM
- Increase cutting tool life, material removal rate and workpiece accuracy
- All shrink fit holders 6mm (1/4") and above include a backup screw

**MATERIAL:** H11 High Alloy Steel **HARDNESS:** 52 HRc tempered



**T.I.R.**  
0.0001" in ID bore



**Speed**  
Up to 25,000 rpm



**Coolant-Thru**  
Plugable Coolant Ports



*Please note that the maximum RPM listed in our catalog may vary depending on the toolholder shank, weight, balanceability and the G rating.*

### STANDARD

Part Number	d	L	L1	D	D1	D2	Max. RPM	Fig.
BT40-SF0125-3.54	1/8"	3.54"	2.00"	0.39"	0.71"	-	25K	4
BT40-SF0125-5.12	1/8"	5.12"	2.00"	0.39"	0.71"	0.84"	25K	5
BT40-SF0187-3.54	3/16"	3.54"	1.50"	0.83"	1.06"	-	25K	4
BT40-SF0187-5.12	3/16"	5.12"	2.25"	0.39"	0.75"	0.87"	25K	5

### STANDARD COOLANT PORTED

Part Number	d	L	L1	D	D1	D2	Max. RPM	Fig.
BT40-SF0250-3.54CP	1/4"	3.54"	1.50"	0.83"	1.06"	-	25K	4
BT40-SF0250-5.12CP	1/4"	5.12"	1.50"	0.83"	1.06"	1.23"	25K	5
BT40-SF0312-3.54CP	5/16"	3.54"	1.50"	0.83"	1.06"	-	25K	4
BT40-SF0312-5.12CP	5/16"	5.12"	1.50"	0.83"	1.06"	1.23"	25K	5
BT40-SF0375-3.54CP	3/8"	3.54"	2.00"	0.95"	1.26"	-	25K	4
BT40-SF0375-5.12CP	3/8"	5.12"	2.00"	0.95"	1.26"	1.39"	25K	5
BT40-SF0500-3.54CP	1/2"	3.54"	2.00"	0.95"	1.26"	-	25K	4
BT40-SF0500-5.12CP	1/2"	5.12"	2.00"	0.95"	1.26"	1.39"	25K	5
BT40-SF0625-3.54CP	5/8"	3.54"	1.75"	1.06"	1.34"	-	25K	4
BT40-SF0750-3.54CP	3/4"	3.54"	2.00"	1.30"	1.61"	-	25K	4
BT40-SF1000-3.94CP	1"	3.94"	2.00"	1.73"	2.05"	-	25K	4

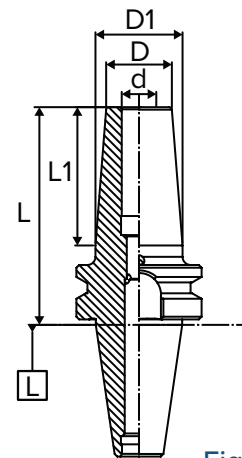


Fig. 4

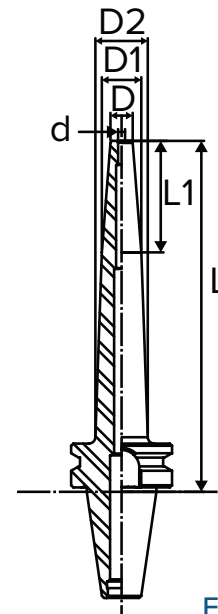
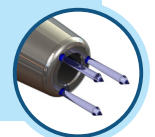


Fig. 5

"CP" stands for "Coolant Ported". Shrink fit is center-thru coolant capable. Contact us for additional coolant options.



## BT40 SHRINK FIT HOLDERS

### EXTENDED

Part Number	d	L	L1	D	D1	D2	Max. RPM	Fig.
<b>BT40-SF0125-6.30</b>	1/8"	6.30"	2.00"	0.39"	0.71"	0.93"	25K	5
<b>BT40-SF0187-6.30</b>	3/16"	6.30"	1.50"	0.83"	1.06"	1.23"	25K	5

### EXTENDED COOLANT PORTED

Part Number	d	L	L1	D	D1	D2	Max. RPM	Fig.
<b>BT40-SF0187-6.30CP</b>	3/16"	6.30"	1.50"	0.83"	1.06"	1.31"	25K	5
<b>BT40-SF0250-6.30CP</b>	1/4"	6.30"	1.50"	0.83"	1.06"	1.32"	25K	5
<b>BT40-SF0312-6.30CP</b>	5/16"	6.30"	1.50"	0.83"	1.06"	1.32"	25K	5
<b>BT40-SF0375-6.30CP</b>	3/8"	6.30"	2.00"	0.95"	1.26"	1.48"	25K	5
<b>BT40-SF0500-6.30CP</b>	1/2"	6.30"	2.00"	0.95"	1.26"	1.48"	25K	5
<b>BT40-SF0625-6.30CP</b>	5/8"	6.30"	1.95"	1.07"	1.36"	1.57"	25K	5
<b>BT40-SF0750-6.30CP</b>	3/4"	6.30"	2.00"	1.30"	1.61"	1.83"	25K	5
<b>BT40-SF1000-6.30CP</b>	1"	6.30"	2.00"	1.73"	2.05"	2.26"	25K	5

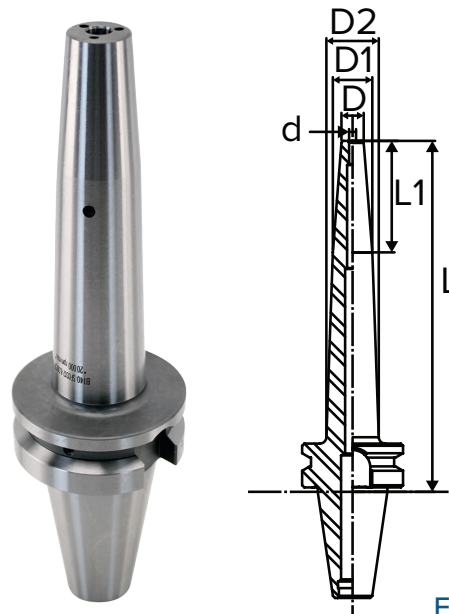
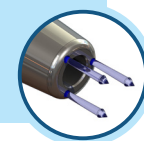


Fig. 5

"CP" stands for "Coolant Ported". Shrink fit is center-thru coolant capable. Contact us for additional coolant options.





## BT50 SHRINK FIT HOLDERS

### FEATURES

- Excellent surface finish, extreme gripping and ideal for high-speed applications
- Pre-balanced up to 25,000 RPM
- Increase cutting tool life, material removal rate and workpiece accuracy
- All shrink fit holders 6mm (1/4") and above include a backup screw

**MATERIAL:** H11 High Alloy Steel **HARDNESS:** 52 HRc tempered



**T.I.R.**  
0.0001" in ID bore



**Speed**  
Up to 25,000 rpm



**Coolant-Thru**  
Pluggable Coolant Ports



*Please note that the maximum RPM listed in our catalog may vary depending on the toolholder shank, weight, balanceability and the G rating.*

### STANDARD

Part Number	d	L	L1	D	D1	D2	Max. RPM	Fig.
<b>BT50-SF0125-3.94</b>	1/8"	3.94"	2.00"	0.39"	0.71"	-	25K	4
<b>BT50-SF0125-6.30</b>	1/8"	6.30"	2.00"	0.39"	0.71"	0.90"	25K	5

### STANDARD COOLANT PORTED

Part Number	d	L	L1	D	D1	Max. RPM	Fig.
<b>BT50-SF0250-3.94CP</b>	1/4"	3.94"	2.00"	0.39"	0.71"	25K	4
<b>BT50-SF0375-3.94CP</b>	3/8"	3.94"	1.50"	0.83"	1.06"	25K	4
<b>BT50-SF0500-3.94CP</b>	1/2"	3.94"	2.00"	0.95"	1.26"	25K	4
<b>BT50-SF0625-3.94CP</b>	5/8"	3.94"	1.75"	1.06"	1.34"	25K	4
<b>BT50-SF0750-3.94CP</b>	3/4"	3.94"	2.25"	1.30"	1.65"	25K	4
<b>BT50-SF1000-3.94CP</b>	1"	3.94"	2.25"	1.73"	2.09"	25K	4
<b>BT50-SF1250-3.94CP</b>	1-1/4"	3.94"	2.25"	1.73"	2.09"	25K	4

### EXTENDED COOLANT PORTED

Part Number	d	L	L1	D	D1	D2	Max. RPM	Fig.
<b>BT50-SF0250-6.30CP</b>	1/4"	6.30"	1.50"	0.83"	1.06"	1.29"	25K	5
<b>BT50-SF0375-6.30CP</b>	3/8"	6.30"	2.00"	0.95"	1.26"	1.45"	25K	5
<b>BT50-SF0500-6.30CP</b>	1/2"	6.30"	2.00"	0.95"	1.26"	1.45"	25K	5
<b>BT50-SF0625-6.30CP</b>	5/8"	6.30"	1.75"	1.06"	1.34"	1.54"	25K	5
<b>BT50-SF0750-6.30CP</b>	3/4"	6.30"	2.25"	1.30"	1.65"	1.82"	25K	5
<b>BT50-SF1000-6.30CP</b>	1"	6.30"	2.25"	1.73"	2.09"	2.26"	25K	5
<b>BT50-SF1250-6.30CP</b>	1-1/4"	6.30"	2.25"	1.73"	2.09"	2.26"	25K	5
<b>BT50-SF8-160CP</b>	8mm	6.30"	1.50"	0.83"	1.06"	1.29"	25K	5
<b>BT50-SF10-160CP</b>	10mm	6.30"	2.00"	0.95"	1.26"	1.45"	25K	5
<b>BT50-SF12-160CP</b>	12mm	6.30"	2.00"	0.95"	1.26"	1.45"	25K	5
<b>BT50-SF16-160CP</b>	16mm	6.30"	1.75"	1.06"	1.26"	1.54"	25K	5

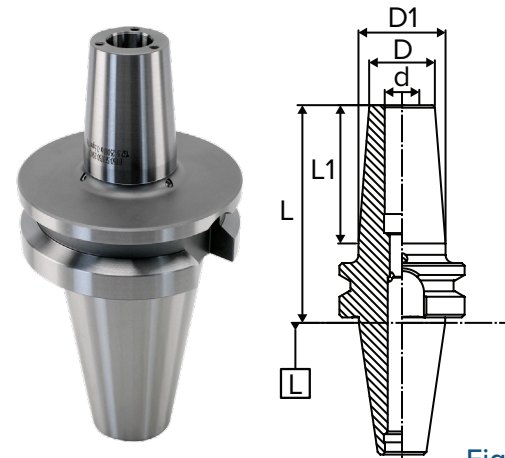


Fig. 4

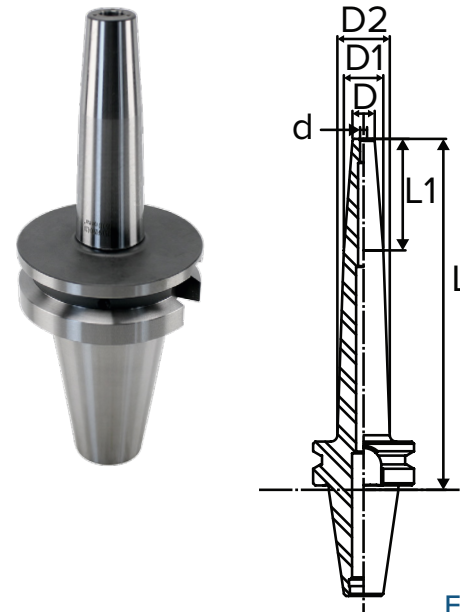
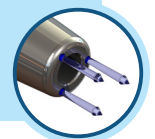


Fig. 5

"CP" stands for "Coolant Ported". Shrink fit is center-thru coolant capable. Contact us for additional coolant options.



## NCAT40 SHRINK FIT HOLDERS

### FEATURES

- Excellent surface finish, extreme gripping and ideal for high-speed applications
- Pre-balanced up to 25,000 RPM
- Increase cutting tool life, material removal rate and workpiece accuracy
- All shrink fit holders 6mm (1/4") and above include a backup screw

**MATERIAL:** H11 High Alloy Steel **HARDNESS:** 52 HRc tempered



**T.I.R.**  
0.0001" in ID bore



**Speed**  
Up to 25,000 rpm



**Coolant-Thru**  
Plugable Coolant Ports

**MILLING**



**REAMING**



**DRILLING**



*Please note that the maximum RPM listed in our catalog may vary depending on the toolholder shank, weight, balanceability and the G rating.*

### STANDARD

Part Number	d	L	L1	D	D1	D2	Max. RPM	Fig.
NCAT40-SF0125-3.15	1/8"	3.15"	2.00"	0.39"	0.71"	-	25K	1
NCAT40-SF0125-5.12	1/8"	5.12"	1.50"	0.39"	0.75"	0.82"	25K	2
NCAT40-SF0187-3.15	3/16"	3.15"	1.50"	0.39"	0.63"	-	25K	1
NCAT40-SF0187-5.12	3/16"	5.12"	1.50"	0.39"	0.63"	0.82"	25K	2

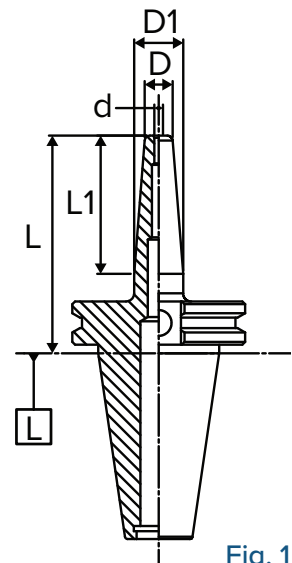


Fig. 1

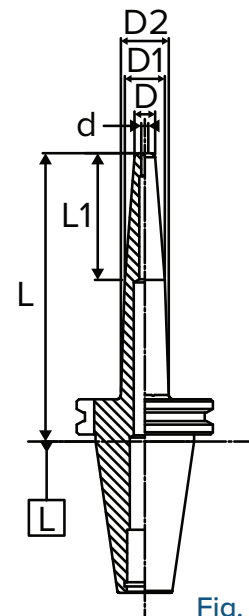


Fig. 2

# SHRINK FIT



## NCAT40 SHRINK FIT HOLDERS

### STANDARD COOLANT PORTED

Part Number	d	L	L1	D	D1	D2	Max. RPM	Fig.
NCAT40-SF0250-3.15CP	1/4"	3.15"	1.50"	0.83"	1.06"	-	25K	1
NCAT40-SF0250-5.12CP	1/4"	5.12"	1.50"	0.83"	1.06"	1.26"	25K	2
NCAT40-SF0312-3.15CP	5/16"	3.15"	1.75"	1.06"	1.34"	-	25K	1
NCAT40-SF0312-5.12CP	5/16"	5.12"	1.50"	0.83"	1.06"	1.26"	25K	2
NCAT40-SF0375-3.15CP	3/8"	3.15"	1.99"	0.95"	1.26"	-	25K	1
NCAT40-SF0375-5.12CP	3/8"	5.12"	2.00"	0.95"	1.26"	1.42"	25K	2
NCAT40-SF0500-3.15CP	1/2"	3.15"	2.00"	0.95"	1.26"	-	25K	1
NCAT40-SF0500-5.12CP	1/2"	5.12"	2.00"	0.95"	1.26"	1.42"	25K	2
NCAT40-SF0625-3.15CP	5/8"	3.15"	1.75"	1.06"	1.34"	-	25K	1
NCAT40-SF0625-5.12CP	5/8"	5.12"	1.75"	1.06"	1.34"	1.51"	25K	2
NCAT40-SF0750-3.15CP	3/4"	3.15"	2.22"	1.30"	1.67"	-	25K	1
NCAT40-SF0750-5.12CP	3/4"	5.12"	2.25"	1.30"	1.65"	1.79"	25K	2
NCAT40-SF1000-3.94CP	1"	3.94"	2.25"	1.73"	2.09"	-	25K	1
NCAT40-SF1000-5.12CP	1"	5.12"	2.25"	1.73"	2.09"	2.22"	25K	2
NCAT40-SF6-80CP	6mm	3.15"	1.50"	0.83"	1.06"	-	25K	1
NCAT40-SF6-130CP	6mm	5.12"	1.50"	0.83"	1.06"	1.26"	25K	2
NCAT40-SF8-80CP	8mm	3.15"	1.50"	0.83"	1.06"	-	25K	1
NCAT40-SF10-80CP	10mm	3.15"	1.99"	0.95"	1.26"	-	25K	1
NCAT40-SF10-130CP	10mm	5.12"	2.00"	0.95"	1.26"	1.42"	25K	2
NCAT40-SF12-80CP	12mm	3.15"	2.00"	0.95"	1.26"	-	25K	1
NCAT40-SF14-80CP	14mm	3.15"	1.75"	1.06"	1.34"	-	25K	1
NCAT40-SF16-80CP	16mm	3.15"	1.75"	1.06"	1.34"	-	25K	1

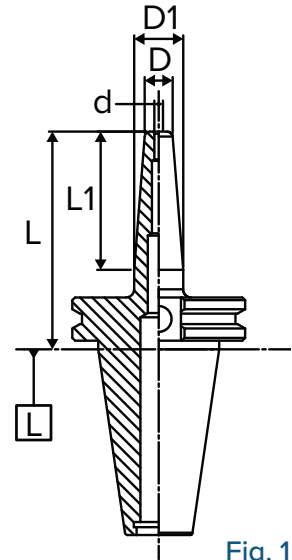


Fig. 1

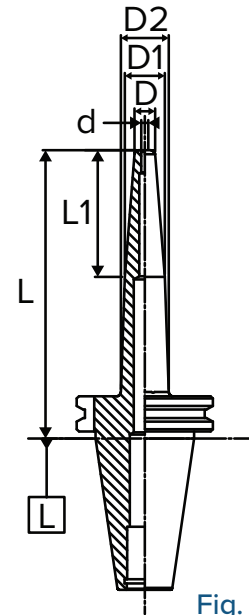
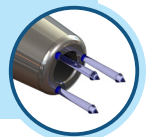


Fig. 2

SHRINK FIT

"CP" stands for "Coolant Ported". Shrink fit is center-thru coolant capable. Contact us for additional coolant options.



## NCAT40 SHRINK FIT HOLDERS

### FEATURES

- Excellent surface finish, extreme gripping and ideal for high-speed applications
- Pre-balanced up to 25,000 RPM
- Increase cutting tool life, material removal rate and workpiece accuracy
- All shrink fit holders 6mm (1/4") and above include a backup screw

**MATERIAL:** H11 High Alloy Steel **HARDNESS:** 52 HRc tempered



**T.I.R.**  
0.0001" in ID bore



**Speed**  
Up to 25,000 rpm



**Coolant-Thru**  
Plugable Coolant Ports

**MILLING**



**REAMING**



**DRILLING**



*Please note that the maximum RPM listed in our catalog may vary depending on the toolholder shank, weight, balanceability and the G rating.*

### EXTENDED

Part Number	d	L	L1	D	D1	D2	Max. RPM	Fig.
<b>NCAT40-SF0125-6.30</b>	1/8"	6.30"	1.50"	0.39"	0.63"	0.91"	25K	3
<b>NCAT40-SF0187-6.30</b>	3/16"	6.30"	1.50"	0.39"	0.63"	0.91"	25K	3

### EXTENDED COOLANT PORTED

Part Number	d	L	L1	D	D1	D2	Max. RPM	Fig.
<b>NCAT40-SF0250-6.30CP</b>	1/4"	6.30"	1.50"	0.83"	1.06"	1.34"	25K	3
<b>NCAT40-SF0375-6.30CP</b>	3/8"	6.30"	2.00"	0.95"	1.26"	1.50"	25K	3
<b>NCAT40-SF0500-6.30CP</b>	1/2"	6.30"	2.00"	0.95"	1.26"	1.50"	25K	3
<b>NCAT40-SF0625-6.30CP</b>	5/8"	6.30"	1.75"	1.06"	1.34"	1.59"	25K	3
<b>NCAT40-SF0750-6.30CP</b>	3/4"	6.30"	2.25"	1.30"	1.65"	1.87"	25K	3
<b>NCAT40-SF1000-6.30CP</b>	1"	6.30"	2.25"	1.73"	2.09"	2.31"	25K	3



Fig. 3

"CP" stands for "Coolant Ported". Shrink fit is center-thru coolant capable. Contact us for additional coolant options.



# SHRINK FIT



## NCAT50 SHRINK FIT HOLDERS

### FEATURES

- Excellent surface finish, extreme gripping and ideal for high-speed applications
- Pre-balanced up to 25,000 RPM
- Increase cutting tool life, material removal rate and workpiece accuracy
- All shrink fit holders 6mm (1/4") and above include a backup screw

**MATERIAL:** H11 High Alloy Steel **HARDNESS:** 52 HRc tempered



**T.I.R.**  
0.0001" in ID bore



**Speed**  
Up to 25,000 rpm



**Coolant-Thru**  
Pluggable Coolant Ports



*Please note that the maximum RPM listed in our catalog may vary depending on the toolholder shank, weight, balanceability and the G rating.*

### STANDARD

Part Number	d	L	L1	D	D1	Max. RPM	Fig.
NCAT50-SF0125-3.15	1/8"	3.15"	2.00"	0.39"	0.71"	25K	1
NCAT50-SF0187-3.15	3/16"	3.15"	2.00"	0.39"	0.71"	25K	1

### STANDARD COOLANT PORTED

Part Number	d	L	L1	D	D1	D2	Max. RPM	Fig.
NCAT50-SF0250-3.15CP	1/4"	3.15"	1.50"	0.83"	1.06"	-	25K	1
NCAT50-SF0250-5.12CP	1/4"	5.12"	1.50"	0.83"	1.06"	1.26"	25K	2
NCAT50-SF0312-3.15CP	5/16"	3.15"	1.50"	0.83"	1.06"	-	25K	1
NCAT50-SF0312-5.12CP	5/16"	5.12"	1.50"	0.83"	1.06"	1.26"	25K	2
NCAT50-SF0375-3.15CP	3/8"	3.15"	2.00"	0.95"	1.26"	-	25K	1
NCAT50-SF0375-5.12CP	3/8"	5.12"	2.00"	0.95"	1.26"	1.42"	25K	2
NCAT50-SF0437-3.15CP	7/16"	3.15"	2.00"	0.95"	1.26"	-	25K	1
NCAT50-SF0500-3.15CP	1/2"	3.15"	2.00"	0.95"	1.26"	-	25K	1
NCAT50-SF0500-5.12CP	1/2"	5.12"	2.00"	0.95"	1.26"	1.42"	25K	2
NCAT50-SF0625-3.15CP	5/8"	3.15"	1.75"	1.06"	1.34"	-	25K	1
NCAT50-SF0625-5.12CP	5/8"	5.12"	1.75"	1.06"	1.34"	1.51"	25K	2
NCAT50-SF0750-3.15CP	3/4"	3.15"	2.22"	1.30"	1.65"	-	25K	1
NCAT50-SF0750-5.12CP	3/4"	5.12"	2.25"	1.30"	1.65"	1.80"	25K	2
NCAT50-SF1000-3.94CP	1"	3.94"	2.25"	1.73"	2.09"	-	25K	1
NCAT50-SF1000-5.12CP	1"	5.12"	2.25"	1.73"	2.09"	2.23"	25K	2
NCAT50-SF1250-3.94CP	1-1/4"	3.15"	2.25"	1.73"	2.09"	-	25K	1
NCAT50-SF1250-5.12CP	1-1/4"	5.12"	2.25"	1.73"	2.09"	2.22"	25K	2
NCAT50-SF6-80CP	6mm	3.15"	1.50"	0.83"	1.06"	-	25K	1
NCAT50-SF8-80CP	8mm	3.15"	1.50"	0.83"	1.06"	-	25K	1
NCAT50-SF10-80CP	10mm	3.15"	2.00"	0.95"	1.26"	-	25K	1
NCAT50-SF14-80CP	14mm	3.15"	1.75"	1.06"	1.34"	-	25K	1

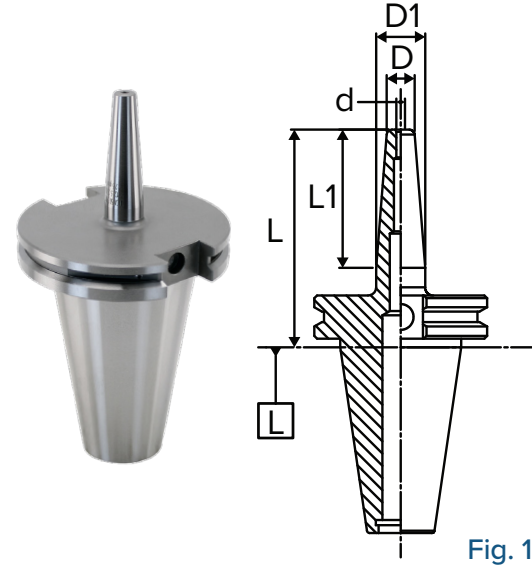


Fig. 1

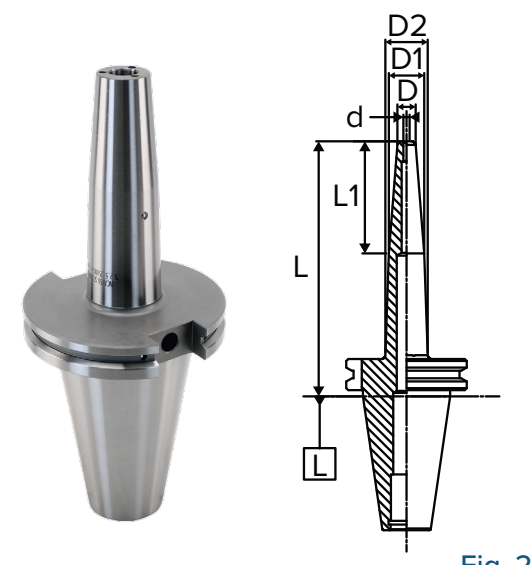


Fig. 2

"CP" stands for "Coolant Ported". Shrink fit is center-thru coolant capable. Contact us for additional coolant options.

SHRINK FIT

## NCAT50 SHRINK FIT HOLDERS

### EXTENDED

Part Number	d	L	L1	D	D1	D2	Max. RPM	Fig.
NCAT50-SF0125-6.30	1/8"	6.30"	2.00"	0.39"	0.71"	0.95"	25K	3

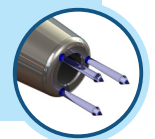
### EXTENDED COOLANT PORTED

Part Number	d	L	L1	D	D1	D2	Max. RPM	Fig.
NCAT50-SF0250-6.30CP	1/4"	6.30"	1.50"	0.83"	1.06"	1.34"	25K	3
NCAT50-SF0375-6.30CP	3/8"	6.30"	2.00"	0.95"	1.26"	1.50"	25K	3
NCAT50-SF0500-6.30CP	1/2"	6.30"	2.00"	0.95"	1.26"	1.50"	25K	3
NCAT50-SF0625-6.30CP	5/8"	6.30"	1.75"	1.06"	1.34"	1.59"	25K	3
NCAT50-SF0750-6.30CP	3/4"	6.30"	2.25"	1.30"	1.65"	1.87"	25K	3
NCAT50-SF1000-6.30CP	1"	6.30"	2.25"	1.73"	2.09"	2.31"	25K	3
NCAT50-SF1250-6.30CP	1-1/4"	6.30"	2.25"	1.73"	2.09"	2.31"	25K	3



Fig. 3

"CP" stands for "Coolant Ported". Shrink fit is center-thru coolant capable. Contact us for additional coolant options.



# SHRINK FIT



## NBT30 SHRINK FIT HOLDERS

### FEATURES

- Excellent surface finish, extreme gripping and ideal for high-speed applications
- Pre-balanced up to 25,000 RPM
- Increase cutting tool life, material removal rate and workpiece accuracy
- All shrink fit holders 6mm (1/4") and above include a backup screw

**MATERIAL:** H11 High Alloy Steel **HARDNESS:** 52 HRc tempered



**T.I.R.**  
0.0001" in ID bore



**Speed**  
Up to 25,000 rpm



**Coolant-Thru**  
Pluggable Coolant Ports

**MILLING**



**REAMING**



**DRILLING**



*Please note that the maximum RPM listed in our catalog may vary depending on the toolholder shank, weight, balanceability and the G rating.*

### STANDARD

Part Number	d	L	L1	D	D1	Max. RPM	Fig.
NBT30-SF0125-3.15	1/8"	3.15"	2.00"	0.39"	0.71"	25K	4
NBT30-SF0187-3.15	3/16"	3.15"	1.50"	0.39"	0.63"	25K	4

### STANDARD COOLANT PORTED

Part Number	d	L	L1	D	D1	Max. RPM	Fig.
NBT30-SF0250-3.15CP	1/4"	3.15"	1.50"	0.83"	1.06"	25K	4
NBT30-SF0375-3.15CP	3/8"	3.15"	1.75"	0.95"	1.26"	25K	4
NBT30-SF0500-3.15CP	1/2"	3.15"	2.00"	0.95"	1.26"	25K	4
NBT30-SF0625-3.15CP	5/8"	3.15"	1.75"	1.06"	1.34"	25K	4
NBT30-SF0750-3.15CP	3/4"	3.15"	1.50"	1.30"	1.54"	25K	4

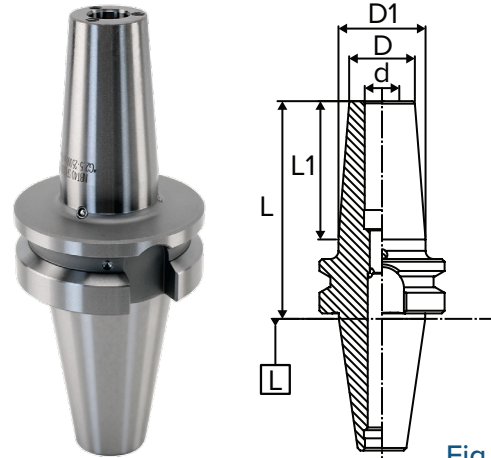


Fig. 4

"CP" stands for "Coolant Ported". Shrink fit is center-thru coolant capable. Contact us for additional coolant options.



## NBT40 SHRINK FIT HOLDERS

### FEATURES

- Excellent surface finish, extreme gripping and ideal for high-speed applications
- Pre-balanced up to 25,000 RPM
- Increase cutting tool life, material removal rate and workpiece accuracy
- All shrink fit holders 6mm (1/4") and above include a backup screw

**MATERIAL:** H11 High Alloy Steel **HARDNESS:** 52 HRc tempered



**T.I.R.**  
0.0001" in ID bore



**Speed**  
Up to 25,000 rpm



**Coolant-Thru**  
Plugable Coolant Ports

**MILLING**



**REAMING**



**DRILLING**



*Please note that the maximum RPM listed in our catalog may vary depending on the toolholder shank, weight, balanceability and the G rating.*

### STANDARD

Part Number	d	L	L1	D	D1	Max. RPM	Fig.
NBT40-SF0125-3.54	1/8"	3.54"	2.00"	0.39"	0.71"	25K	4
NBT40-SF0187-3.54	3/16"	3.54"	2.00"	0.39"	0.71"	25K	4

### STANDARD COOLANT PORTED

Part Number	d	L	L1	D	D1	D2	Max. RPM	Fig.
NBT40-SF0250-3.54CP	1/4"	3.54"	1.50"	0.83"	1.06"	-	25K	4
NBT40-SF0375-3.54CP	3/8"	3.54"	2.00"	0.95"	1.26"	-	25K	4
NBT40-SF0500-3.54CP	1/2"	3.54"	2.00"	0.95"	1.26"	-	25K	4
NBT40-SF0500-5.12CP	1/2"	5.12"	2.00"	0.95"	1.26"	1.39"	25K	5
NBT40-SF0625-3.54CP	5/8"	3.54"	1.75"	1.06"	1.34"	-	25K	4
NBT40-SF0750-3.54CP	3/4"	3.54"	2.00"	1.30"	1.61"	-	25K	4
NBT40-SF0750-5.12CP	3/4"	5.12"	2.00"	1.30"	1.61"	1.75"	25K	5
NBT40-SF1000-3.54CP	1"	3.54"	2.00"	1.73"	2.05"	-	25K	4

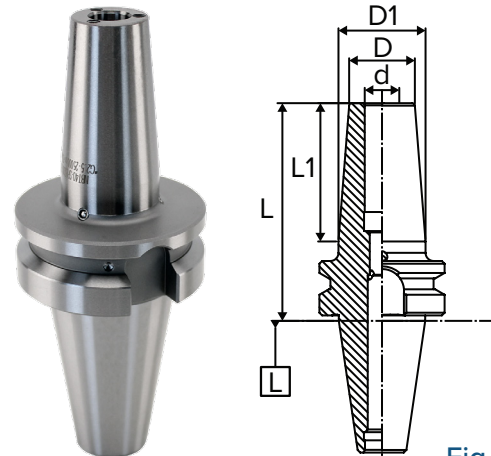


Fig. 4

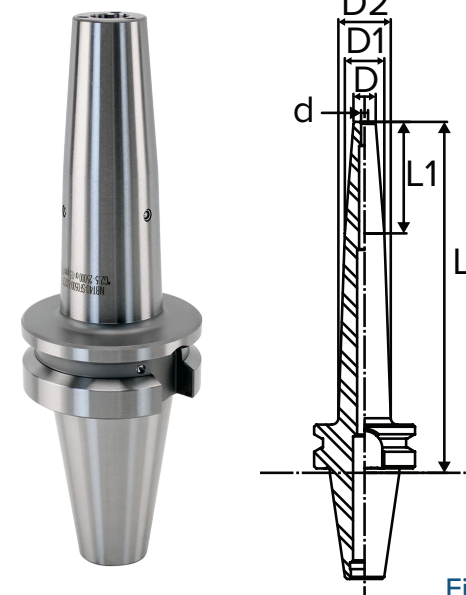
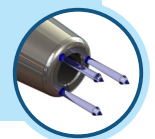


Fig. 5

"CP" stands for "Coolant Ported". Shrink fit is center-thru coolant capable. Contact us for additional coolant options.





## NBT40 SHRINK FIT HOLDERS

### EXTENDED

Part Number	d	L	L1	D	D1	D2	Max. RPM	Fig.
<b>NBT40-SF0125-6.30</b>	1/8"	6.30"	2.00"	0.39"	0.71"	0.93"	25K	5

### EXTENDED COOLANT PORTED

Part Number	d	L	L1	D	D1	D2	Max. RPM	Fig.
<b>NBT40-SF0250-6.30CP</b>	1/4"	6.30"	1.50"	0.83"	1.06"	1.32"	25K	5
<b>NBT40-SF0375-6.30CP</b>	3/8"	6.30"	2.00"	0.95"	1.26"	1.48"	25K	5
<b>NBT40-SF0500-6.30CP</b>	1/2"	6.30"	2.00"	0.95"	1.26"	1.48"	25K	5
<b>NBT40-SF0625-6.30CP</b>	5/8"	6.30"	1.95"	1.07"	1.37"	1.59"	25K	5
<b>NBT40-SF0750-6.30CP</b>	3/4"	6.30"	2.00"	1.30"	1.61"	1.83"	25K	5
<b>NBT40-SF1000-6.30CP</b>	1"	6.30"	2.00"	1.73"	2.05"	2.26"	25K	5

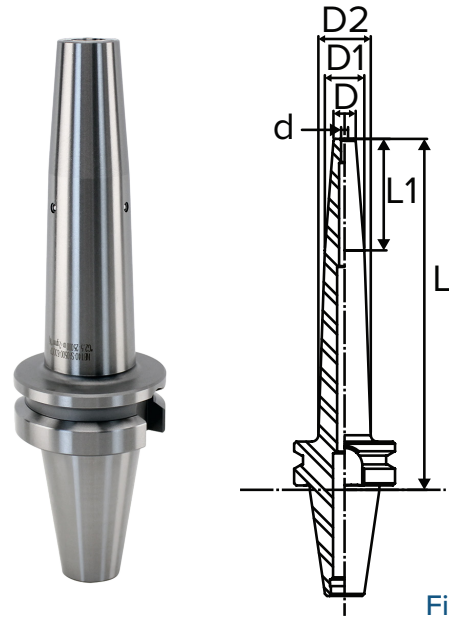
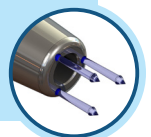


Fig. 5

"CP" stands for "Coolant Ported". Shrink fit is center-thru coolant capable. Contact us for additional coolant options.



## HSK63A SHRINK FIT HOLDERS

### FEATURES

- Excellent surface finish, extreme gripping and ideal for high-speed applications
- Pre-balanced up to 25,000 RPM
- Increase cutting tool life, material removal rate and workpiece accuracy
- All shrink fit holders 6mm (1/4") and above include a backup screw

**MATERIAL:** H11 High Alloy Steel **HARDNESS:** 52 HRc tempered



**T.I.R.**  
0.0001" in ID bore



**Speed**  
Up to 25,000 rpm



**Coolant-Thru**  
Center-thru

MILLING



REAMING



DRILLING



Please note that the maximum RPM listed in our catalog may vary depending on the toolholder shank, weight, balanceability and the G rating.

### STANDARD

Part Number	d	L	L1	D	D1	Max. RPM	Fig.
H63A-SF0125-3.15	1/8"	3.15"	2.01"	0.39"	0.71"	25K	6

### STANDARD COOLANT PORTED

Part Number	d	L	L1	D	D1	Max. RPM	Fig.
H63A-SF0125-4.72CP	1/8"	4.72"	1.75"	0.79"	1.06"	25K	6
H63A-SF0187-4.72CP	3/16"	4.72"	1.75"	0.79"	1.06"	25K	6
H63A-SF0250-3.15CP	1/4"	3.15"	1.75"	0.79"	1.06"	25K	6
H63A-SF0250-4.72CP	1/4"	4.72"	1.75"	0.79"	1.06"	25K	6
H63A-SF0250-5.12CP	1/4"	5.12"	1.75"	0.79"	1.06"	25K	6
H63A-SF0312-3.15CP	5/16"	3.15"	1.75"	0.79"	1.06"	25K	6
H63A-SF0312-4.72CP	5/16"	4.72"	1.75"	0.79"	1.06"	25K	6
H63A-SF0312-5.12CP	5/16"	5.12"	1.75"	0.79"	1.06"	25K	6
H63A-SF0375-3.35CP	3/8"	3.35"	2.00"	0.95"	1.26"	25K	6
H63A-SF0375-4.72CP	3/8"	4.72"	2.00"	0.95"	1.26"	25K	6
H63A-SF0375-5.12CP	3/8"	5.12"	2.00"	0.95"	1.26"	25K	6
H63A-SF0500-3.54CP	1/2"	3.54"	2.00"	0.95"	1.26"	25K	6
H63A-SF0500-4.72CP	1/2"	4.72"	2.00"	0.95"	1.26"	25K	6
H63A-SF0500-5.12CP	1/2"	5.12"	2.00"	0.95"	1.26"	25K	6
H63A-SF0625-3.74CP	5/8"	3.74"	1.75"	1.06"	1.34"	25K	6
H63A-SF0625-4.72CP	5/8"	4.72"	1.75"	1.06"	1.34"	25K	6
H63A-SF0625-5.12CP	5/8"	4.72"	1.75"	1.06"	1.34"	25K	6
H63A-SF0750-3.94CP	3/4"	3.94"	2.25"	1.30"	1.65"	25K	6
H63A-SF0750-4.72CP	3/4"	4.72"	2.25"	1.30"	1.65"	25K	6
H63A-SF1000-4.53CP	1"	4.53"	2.00"	1.73"	2.05"	25K	6
H63A-SF6-80CP	6mm	3.15"	1.75"	0.79"	1.06"	25K	6
H63A-SF8-80CP	8mm	3.15"	1.75"	0.79"	1.06"	25K	6
H63A-SF8-120CP	8mm	4.72"	1.50"	0.83"	1.06"	25K	6
H63A-SF10-85CP	10mm	3.35"	2.00"	0.95"	1.26"	25K	6
H63A-SF10-120CP	10mm	4.72"	2.00"	0.95"	1.26"	25K	6
H63A-SF12-90CP	12mm	3.54"	2.00"	0.95"	1.26"	25K	6
H63A-SF12-120CP	12mm	4.72"	2.00"	0.95"	1.26"	25K	6
H63A-SF14-90CP	14mm	3.54"	1.75"	1.06"	1.34"	25K	6
H63A-SF16-95CP	16mm	3.74"	1.75"	1.06"	1.34"	25K	6

Note:

- Coolant tube and coolant wrench not included.
- Please see page 130 for more details.

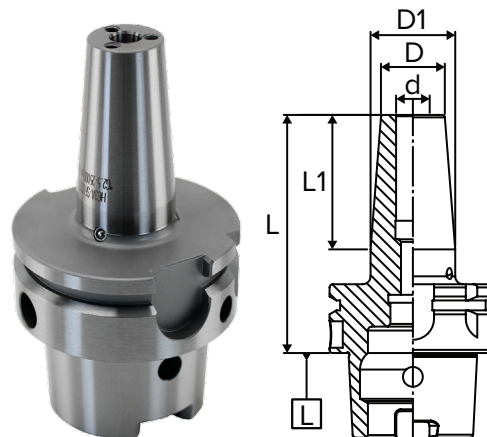


Fig. 6

Standard - DIN69893A / DIN 69882-8  
Coolant Port Option - DIN69893A / DIN 69882-8

"CP" stands for "Coolant Ported". Shrink fit is center-thru coolant capable. Contact us for additional coolant options.





## HSK63A SHRINK FIT HOLDERS

### EXTENDED COOLANT PORTED

Part Number	d	L	L1	D	D1	Max. RPM	Fig.
H63A-SF0125-6.30CP	1/8"	6.30"	1.75"	0.79"	1.06"	25K	6
H63A-SF0187-6.30CP	3/16"	6.30"	1.75"	0.79"	1.06"	25K	6
H63A-SF0250-6.30CP	1/4"	6.30"	1.75"	0.79"	1.06"	25K	6
H63A-SF0312-6.30CP	5/16"	6.30"	1.75"	0.79"	1.06"	25K	6
H63A-SF0375-6.30CP	3/8"	6.30"	2.00"	0.95"	1.26"	25K	6
H63A-SF0500-6.30CP	1/2"	6.30"	2.00"	0.95"	1.26"	25K	6
H63A-SF0625-6.30CP	5/8"	6.30"	1.75"	0.95"	1.34"	25K	6
H63A-SF0750-6.30CP	3/4"	6.30"	2.25"	1.30"	1.65"	25K	6
H63A-SF1000-6.30CP	1"	6.30"	2.00"	1.73"	2.05"	25K	6
H63A-SF8-160CP	8mm	6.30"	1.75"	0.79"	1.06"	25K	6
H63A-SF10-160CP	10mm	6.30"	2.00"	0.95"	1.26"	25K	6
H63A-SF12-160CP	12mm	6.30"	2.00"	0.95"	1.26"	25K	6
H63A-SF16-160CP	16mm	6.30"	1.75"	1.06"	1.34"	25K	6
H63A-SF20-160CP	20mm	6.30"	2.25"	1.30"	1.65"	25K	6
H63A-SF25-160CP	25mm	6.30"	2.00"	1.73"	2.05"	25K	6

**Note:**

- Coolant tube and coolant wrench not included.
- Please see page 130 for more details.

### MOLD TYPE

Part Number	d	L	L1	D	D1	Max. RPM	Fig.
H63A-SF0125-3.15MT	1/8"	3.15"	1.75"	0.35"	0.63"	25K	7
H63A-SF0125-6.30MT	1/8"	6.30"	3.25"	0.35"	0.87"	25K	7
H63A-SF0250-6.30MT	1/4"	6.30"	3.75"	0.47"	1.06"	25K	7
H63A-SF0375-3.35MT	3/8"	3.35"	1.75"	0.63"	0.91"	25K	7
H63A-SF0500-3.54MT	1/2"	3.54"	2.00"	0.71"	1.02"	25K	7
H63A-SF3-80MT	3mm	3.15"	1.75"	0.35"	0.63"	25K	7
H63A-SF3-160MT	3mm	6.30"	3.25"	0.35"	0.87"	25K	7
H63A-SF4-80MT	4mm	3.15"	1.87"	0.39"	0.67"	25K	7
H63A-SF6-160MT	6mm	6.30"	3.75"	0.47"	1.06"	25K	7

**Note:**

- Mold Type & Rigid Type Shrink Fit Holders can be made as special.

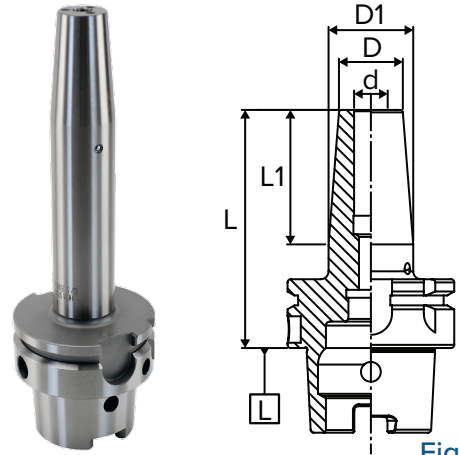


Fig. 6

Extended - DIN69893A / DIN 69882-8

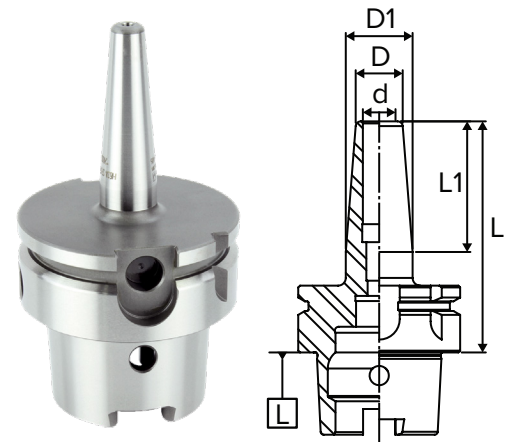
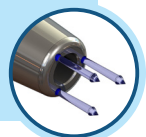


Fig. 7

"CP" stands for "Coolant Ported". Shrink fit is center-thru coolant capable. Contact us for additional coolant options.



## HSK100A SHRINK FIT HOLDERS

### FEATURES

- Excellent surface finish, extreme gripping and ideal for high-speed applications
- Pre-balanced up to 25,000 RPM
- Increase cutting tool life, material removal rate and workpiece accuracy
- All shrink fit holders 6mm (1/4") and above include a backup screw

**MATERIAL:** H11 High Alloy Steel **HARDNESS:** 52 HRc tempered



**T.I.R.**  
0.0001" in ID bore



**Speed**  
Up to 25,000 rpm



**Coolant-Thru**  
Center-thru

MILLING



REAMING



DRILLING



Please note that the maximum RPM listed in our catalog may vary depending on the toolholder shank, weight, balanceability and the G rating.

### STANDARD

Part Number	d	L	L1	D	D1	Max. RPM	Fig.
H100A-SF0187-3.74	3/16"	3.74"	1.50"	0.39"	0.63"	25K	6

### STANDARD COOLANT PORTED

Part Number	d	L	L1	D	D1	Max. RPM	Fig.
H100A-SF0250-3.54CP	1/4"	3.54"	1.50"	0.83"	1.06"	25K	6
H100A-SF0312-3.54CP	5/16"	3.54"	1.50"	0.83"	1.06"	25K	6
H100A-SF0375-3.54CP	3/8"	3.54"	2.00"	0.95"	1.26"	25K	6
H100A-SF0437-3.74CP	7/16"	3.74"	2.00"	0.95"	1.26"	25K	6
H100A-SF0500-3.74CP	1/2"	3.74"	2.00"	0.95"	1.26"	25K	6
H100A-SF0625-3.94CP	5/8"	3.94"	1.75"	1.06"	1.34"	25K	6
H100A-SF0750-4.13CP	3/4"	4.13"	2.25"	1.30"	1.65"	25K	6
H100A-SF1000-4.53CP	1"	4.53"	2.25"	1.73"	2.09"	25K	6
H100A-SF1250-4.72CP	1-1/4"	4.72"	2.25"	1.73"	2.09"	25K	6
H100A-SF4-85CP	4mm	3.35"	1.25"	0.59"	0.79"	25K	6
H100A-SF4-130CP	4mm	5.12"	1.25"	0.59"	0.79"	25K	6
H100A-SF6-85CP	6mm	3.35"	1.50"	0.83"	1.06"	25K	6
H100A-SF6-130CP	6mm	5.12"	1.50"	0.83"	1.06"	25K	6
H100A-SF8-85CP	8mm	3.54"	1.50"	0.83"	1.06"	25K	6
H100A-SF8-130CP	8mm	3.74"	1.50"	0.83"	1.06"	25K	6
H100A-SF10-90CP	10mm	3.54"	2.00"	0.95"	1.26"	25K	6
H100A-SF10-130CP	10mm	3.74"	2.00"	0.95"	1.26"	25K	6
H100A-SF12-95CP	12mm	3.74"	2.00"	0.95"	1.26"	25K	6
H100A-SF12-130CP	12mm	3.74"	2.00"	0.95"	1.26"	25K	6
H100A-SF14-95CP	14mm	3.74"	1.75"	1.06"	1.34"	25K	6
H100A-SF14-130CP	14mm	3.74"	1.75"	1.06"	1.34"	25K	6
H100A-SF16-80CP	16mm	3.150"	1.69"	1.06"	1.34"	25K	6
H100A-SF16-100CP	16mm	3.94"	1.75"	1.06"	1.34"	25K	6
H100A-SF16-130CP	16mm	3.74"	1.75"	1.06"	1.34"	25K	6
H100A-SF18-100CP	18mm	3.94"	2.25"	1.30"	1.65"	25K	6
H100A-SF18-130CP	18mm	5.12"	2.25"	1.30"	1.65"	25K	6
H100A-SF20-105CP	20mm	4.13"	2.25"	1.30"	1.65"	25K	6
H100A-SF20-130CP	20mm	3.74"	2.25"	1.30"	1.65"	25K	6
H100A-SF25-115CP	25mm	4.53"	2.25"	1.73"	2.09"	25K	6
H100A-SF25-130CP	25mm	3.74"	2.25"	1.73"	2.09"	25K	6
H100A-SF32-120CP	32mm	4.72"	2.25"	1.73"	2.09"	25K	6
H100A-SF32-130CP	32mm	3.74"	2.25"	1.73"	2.09"	25K	6

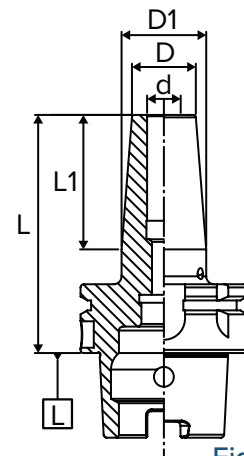


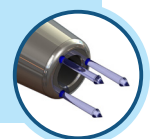
Fig. 6

Coolant Port Option - DIN69893A / DIN 69882-8

**Note:**

- Coolant tube and coolant wrench not included.
- Please see page 130 for more details.

"CP" stands for "Coolant Ported". Shrink fit is center-thru coolant capable. Contact us for additional coolant options.





## HSK100A SHRINK FIT HOLDERS

### EXTENDED

Part Number	d	L	L1	D	D1	Max. RPM	Fig.
H100A-SF0187-6.30	3/16"	6.30"	2.75"	0.43"	0.87"	25K	6

### EXTENDED COOLANT PORTED

Part Number	d	L	L1	D	D1	Max. RPM	Fig.
H100A-SF0250-6.30CP	1/4"	6.30"	1.50"	0.83"	1.06"	25K	6
H100A-SF0312-6.30CP	5/16"	6.30"	1.50"	0.83"	1.06"	25K	6
H100A-SF0375-6.30CP	3/8"	6.30"	2.00"	0.95"	1.26"	25K	6
H100A-SF0437-6.30CP	7/16"	6.30"	2.00"	0.95"	1.26"	25K	6
H100A-SF0500-6.30CP	1/2"	6.30"	2.00"	0.95"	1.26"	25K	6
H100A-SF0625-6.30CP	5/8"	6.30"	1.75"	1.06"	1.34"	25K	6
H100A-SF0750-6.30CP	3/4"	6.30"	2.25"	1.30"	1.65"	25K	6
H100A-SF1000-6.30CP	1"	6.30"	2.25"	1.73"	2.09"	25K	6
H100A-SF1250-6.30CP	1.1/4"	6.30"	2.25"	1.73"	2.09"	25K	6
H100A-SF6-160CP	6mm	6.30"	1.50"	0.83"	1.06"	25K	6
H100A-SF8-160CP	8mm	6.30"	1.50"	0.83"	1.06"	25K	6
H100A-SF10-160CP	10mm	6.30"	2.00"	0.95"	1.26"	25K	6
H100A-SF12-160CP	12mm	6.30"	2.00"	0.95"	1.26"	25K	6
H100A-SF14-160CP	14mm	6.30"	1.75"	1.06"	1.34"	25K	6
H100A-SF16-160CP	16mm	6.30"	1.75"	1.06"	1.34"	25K	6
H100A-SF18-160CP	18mm	6.30"	2.25"	1.30"	1.65"	25K	6
H100A-SF20-160CP	20mm	6.30"	2.25"	1.30"	1.65"	25K	6
H100A-SF25-160CP	25mm	6.30"	2.25"	1.73"	2.09"	25K	6
H100A-SF32-160CP	32mm	6.30"	2.25"	1.73"	2.09"	25K	6

Note:

- Coolant tube and coolant wrench not included.
- Please see page 130 for more details.

### MOLD TYPE

Part Number	d	L	L1	D	D1	Max. RPM	Fig.
H100A-SF4-85MT	4mm	3.35"	1.75"	0.39"	0.67"	25K	8
H100A-SF4-160MT	4mm	6.30"	3.00"	0.39"	0.87"	25K	8
H100A-SF6-85MT	6mm	3.35"	1.75"	0.47"	0.75"	25K	8
H100A-SF6-160MT	6mm	6.30"	3.75"	0.47"	1.06"	25K	8
H100A-SF8-85MT	8mm	3.35"	1.89"	0.55"	0.85"	25K	8
H100A-SF8-160MT	8mm	6.30"	3.37"	0.55"	1.06"	25K	8
H100A-SF10-90MT	10mm	3.54"	1.75"	0.63"	0.91"	25K	8
H100A-SF10-160MT	10mm	6.30"	4.00"	0.63"	1.26"	25K	8
H100A-SF12-95MT	12mm	3.74"	2.00"	0.71"	1.02"	25K	8
H100A-SF12-160MT	12mm	6.30"	3.50"	0.71"	1.26"	25K	8
H100A-SF16-100MT	16mm	3.94"	2.48"	0.94"	1.34"	25K	8
H100A-SF16-160MT	16mm	6.30"	2.50"	0.94"	1.34"	25K	8

Note:

- Mold Type & Rigid Type Shrink Fit Holders can be made as special.

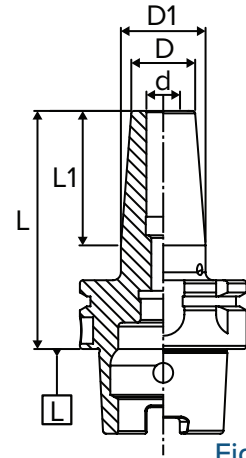


Fig. 6

Coolant Port Option - DIN69893A / DIN 69882-8

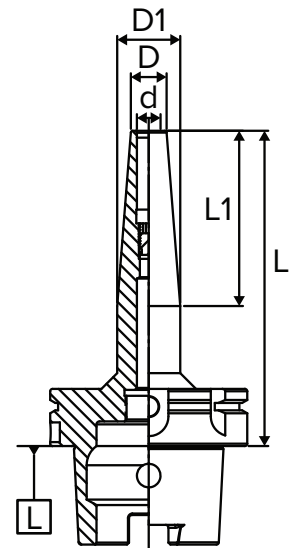
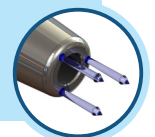


Fig. 8

"CP" stands for "Coolant Ported". Shrink fit is center-thru coolant capable. Contact us for additional coolant options.



## POLYGONAL TAPER SHRINK FIT HOLDERS

### FEATURES

- Excellent surface finish, extreme gripping and ideal for high-speed applications
- Pre-balanced up to 25,000 RPM
- Increase cutting tool life, material removal rate and workpiece accuracy
- All shrink fit holders 6mm (1/4") and above include a backup screw

**MATERIAL:** H11 High Alloy Steel **HARDNESS:** 52 HRc tempered



**T.I.R.**  
0.0001" in ID bore



**Speed**  
Up to 25,000 rpm



**Coolant-Thru**  
Center-thru

**MILLING**



**REAMING**



**DRILLING**



*Please note that the maximum RPM listed in our catalog may vary depending on the toolholder shank, weight, balanceability and the G rating.*

### STANDARD - C4/C5/C6/C8

Part Number	d	L	L1	D	D1	Max. RPM	Fig.
C4-SF0125-2.95	1/8"	2.95"	1.50"	0.39"	0.63"	25K	9
C4-SF0125-4.72	1/8"	4.72"	1.50"	0.39"	0.63"	25K	9
C4-SF0187-2.95	3/16"	2.95"	1.50"	0.39"	0.63"	25K	9
C4-SF0187-4.72	3/16"	4.72"	1.50"	0.39"	0.63"	25K	9
C4-SF4-75	4mm	2.95"	1.75"	0.39"	0.67"	25K	9
C4-SF4-120	4mm	4.72"	2.25"	0.39"	0.75"	25K	9
C5-SF0125-2.95	1/8"	2.95"	1.50"	0.39"	0.63"	25K	9
C5-SF0125-4.72	1/8"	4.72"	2.00"	0.39"	0.71"	25K	9
C5-SF0187-2.95	3/16"	2.95"	1.50"	0.39"	0.63"	25K	9
C5-SF0187-4.72	3/16"	4.72"	2.00"	0.39"	0.71"	25K	9
C5-SF3-75	3mm	2.95"	1.75"	0.35"	0.63"	25K	9
C5-SF3-120	3mm	4.72"	2.25"	0.35"	0.71"	25K	9
C5-SF4-120	4mm	4.72"	2.25"	0.39"	0.75"	25K	9
C6-SF0125-3.15	1/8"	3.15"	1.50"	0.39"	0.63"	25K	9
C6-SF0125-4.72	1/8"	4.72"	2.00"	0.39"	0.71"	25K	9
C6-SF0187-3.15	3/16"	3.15"	1.50"	0.39"	0.63"	25K	9
C6-SF0187-4.72	3/16"	4.72"	2.00"	0.39"	0.71"	25K	9
C6-SF3-80	3mm	3.15"	1.75"	0.35"	0.63"	25K	9
C6-SF3-120	3mm	4.72"	2.25"	0.35"	0.71"	25K	9
C6-SF4-80	4mm	3.15"	1.75"	0.39"	0.67"	25K	9
C6-SF4-120	4mm	4.72"	2.25"	0.39"	0.75"	25K	9
C8-SF0125-3.15	1/8"	3.15"	1.50"	0.39"	0.63"	25K	9
C8-SF0125-5.12	1/8"	5.12"	2.00"	0.39"	0.71"	25K	9
C8-SF0187-3.15	3/16"	3.15"	1.50"	0.39"	0.63"	25K	9
C8-SF0187-5.12	3/16"	5.12"	2.00"	0.39"	0.71"	25K	9
C8-SF3-85	3mm	3.350"	1.75"	0.35"	0.63"	25K	9
C8-SF3-130	3mm	5.12"	2.25"	0.35"	0.71"	25K	9
C8-SF4-85	4mm	3.350"	1.75"	0.39"	0.67"	25K	9
C8-SF4-130	4mm	5.12"	2.25"	0.39"	0.75"	25K	9

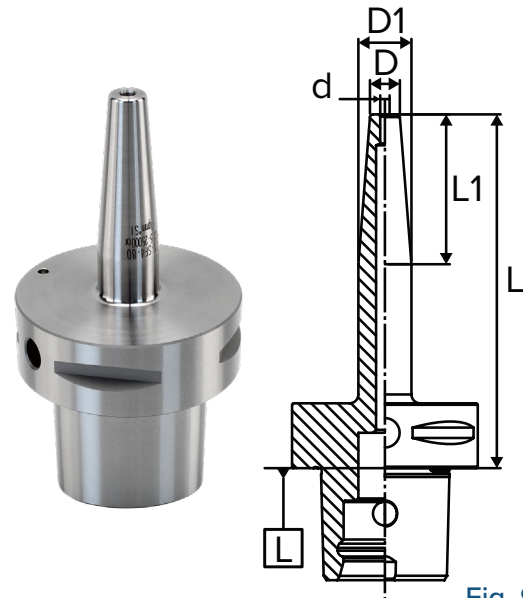


Fig. 9



## POLYGONAL TAPER SHRINK FIT HOLDERS

### STANDARD COOLANT PORTED - C4/C5

Part Number	d	L	L1	D	D1	Max. RPM	Fig.
C4-SF0250-2.95CP	1/4"	2.95"	1.75"	0.79"	1.06"	25K	9
C4-SF0250-4.72CP	1/4"	4.72"	1.75"	0.79"	1.06"	25K	9
C4-SF0375-2.95CP	3/8"	2.95"	2.00"	0.95"	1.26"	25K	9
C4-SF0375-4.72CP	3/8"	4.72"	2.00"	0.95"	1.26"	25K	9
C4-SF0500-2.95CP	1/2"	2.95"	2.00"	0.95"	1.26"	25K	9
C4-SF0500-4.72CP	1/2"	4.72"	2.00"	0.95"	1.26"	25K	9
C4-SF0625-3.15CP	5/8"	3.15"	1.75"	1.06"	1.34"	25K	9
C4-SF0625-4.72CP	5/8"	4.72"	1.75"	1.06"	1.34"	25K	9
C4-SF6-75CP	6mm	2.95"	1.75"	0.79"	1.06"	25K	9
C4-SF6-120CP	6mm	4.72"	1.75"	0.79"	1.06"	25K	9
C4-SF10-75CP	10mm	2.95"	2.00"	0.95"	1.26"	25K	9
<hr/>							
C5-SF0250-2.95CP	1/4"	2.95"	1.75"	0.79"	1.06"	25K	9
C5-SF0250-4.72CP	1/4"	4.72"	1.75"	0.79"	1.06"	25K	9
C5-SF0375-2.95CP	3/8"	2.95"	2.00"	0.95"	1.26"	25K	9
C5-SF0375-4.72CP	3/8"	4.72"	2.00"	0.95"	1.26"	25K	9
C5-SF0500-2.95CP	1/2"	2.95"	2.00"	0.95"	1.26"	25K	9
C5-SF0500-4.72CP	1/2"	4.72"	2.00"	0.95"	1.26"	25K	9
C5-SF0625-3.15CP	5/8"	3.15"	1.75"	1.06"	1.34"	25K	9
C5-SF0625-4.72CP	5/8"	4.72"	1.75"	1.06"	1.34"	25K	9
C5-SF0750-3.35CP	3/4"	3.35"	2.25"	1.30"	1.65"	25K	9
C5-SF0750-4.72CP	3/4"	4.72"	2.25"	1.30"	1.65"	25K	9
C5-SF6-75CP	6mm	2.95"	1.75"	0.79"	1.06"	25K	9
C5-SF6-120CP	6mm	4.72"	1.75"	0.79"	1.06"	25K	9
C5-SF8-75CP	8mm	2.95"	1.75"	0.79"	1.06"	25K	9
C5-SF12-75CP	12mm	2.95"	2.00"	0.95"	1.26"	25K	9

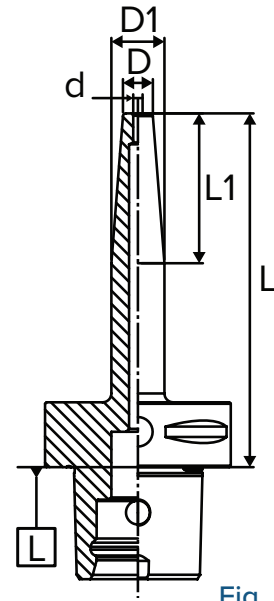
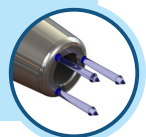


Fig. 9

"CP" stands for "Coolant Ported". Shrink fit is center-thru coolant capable. Contact us for additional coolant options.



## POLYGONAL TAPER SHRINK FIT HOLDERS

### STANDARD COOLANT PORTED - C6

Part Number	d	L	L1	D	D1	Max. RPM	Fig.
C6-SF0250-3.15CP	1/4"	3.15"	1.75"	0.79"	1.06"	25K	9
C6-SF0250-4.72CP	1/4"	4.72"	1.75"	0.79"	1.06"	25K	9
C6-SF0312-3.15CP	5/16"	3.15"	1.75"	0.79"	1.06"	25K	9
C6-SF0375-3.15CP	3/8"	3.15"	2.00"	0.95"	1.26"	25K	9
C6-SF0375-4.72CP	3/8"	4.72"	2.00"	0.95"	1.26"	25K	9
C6-SF0500-3.15CP	1/2"	3.15"	2.00"	0.95"	1.26"	25K	9
C6-SF0500-4.72CP	1/2"	4.72"	2.00"	0.95"	1.26"	25K	9
C6-SF0625-3.35CP	5/8"	3.35"	1.75"	1.06"	1.34"	25K	9
C6-SF0625-4.72CP	5/8"	4.72"	1.75"	1.06"	1.34"	25K	9
C6-SF0750-3.35CP	3/4"	3.35"	2.25"	1.30"	1.65"	25K	9
C6-SF0750-4.72CP	3/4"	4.72"	2.25"	1.30"	1.65"	25K	9
C6-SF1000-3.54CP	1.0"	3.54"	2.25"	1.73"	2.09"	25K	9
C6-SF1000-4.72CP	1.0"	4.72"	2.25"	1.73"	2.09"	25K	9
C6-SF1250-3.74CP	1-1/4"	3.74"	2.25"	1.73"	2.09"	25K	9
C6-SF1250-4.72CP	1-1/4"	4.72"	2.25"	1.73"	2.09"	25K	9
C6-SF6-80CP	6mm	3.15"	1.75"	0.79"	1.06"	25K	9
C6-SF6-120CP	6mm	4.72"	1.75"	0.79"	1.06"	25K	9
C6-SF8-80CP	8mm	3.15"	1.75"	0.79"	1.06"	25K	9
C6-SF8-120CP	8mm	4.72"	1.75"	0.79"	1.06"	25K	9
C6-SF10-80CP	10mm	3.15"	2.00"	0.95"	1.26"	25K	9
C6-SF10-120CP	10mm	4.72"	2.00"	0.95"	1.26"	25K	9
C6-SF12-80CP	12mm	3.15"	2.00"	0.95"	1.26"	25K	9
C6-SF12-120CP	12mm	4.72"	2.00"	0.95"	1.26"	25K	9
C6-SF14-85CP	14mm	3.35"	1.75"	1.06"	1.34"	25K	9
C6-SF14-120CP	14mm	4.72"	1.75"	1.06"	1.34"	25K	9
C6-SF16-85CP	16mm	3.35"	1.75"	1.06"	1.34"	25K	9
C6-SF16-120CP	16mm	4.72"	1.75"	1.06"	1.34"	25K	9
C6-SF18-85CP	18mm	3.35"	2.25"	1.30"	1.65"	25K	9
C6-SF18-120CP	18mm	4.72"	2.25"	1.30"	1.65"	25K	9
C6-SF20-85CP	20mm	3.35"	2.25"	1.30"	1.65"	25K	9
C6-SF20-120CP	20mm	4.72"	2.25"	1.30"	1.65"	25K	9
C6-SF25-90CP	25mm	3.54"	2.25"	1.73"	2.09"	25K	9
C6-SF25-120CP	25mm	4.72"	2.25"	1.73"	2.09"	25K	9
C6-SF32-95CP	32mm	3.54"	2.25"	1.73"	2.09"	25K	9
C6-SF32-120CP	32mm	4.72"	2.25"	1.73"	2.09"	25K	9

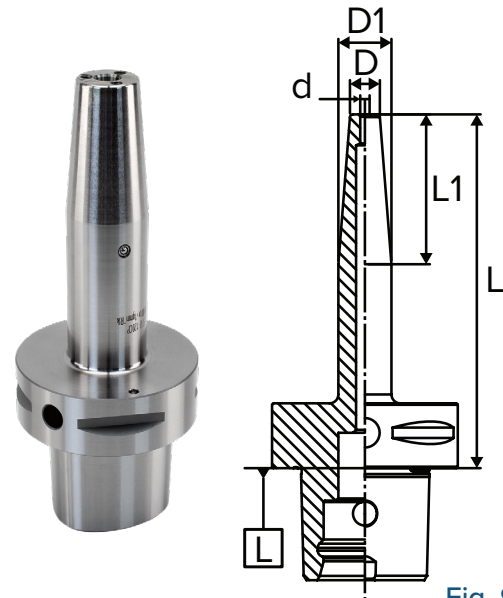


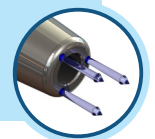
Fig. 9

SHRINK FIT

### EXTENDED COOLANT PORTED - C6

Part Number	d	L	L1	D	D1	Max. RPM	Fig.
C6-SF0750-6.30CP	3/4"	6.30"	2.25"	1.30"	1.65"	25K	9

"CP" stands for "Coolant Ported". Shrink fit is center-thru coolant capable. Contact us for additional coolant options.





## POLYGONAL TAPER SHRINK FIT HOLDERS

### STANDARD COOLANT PORTED - C8

Part Number	d	L	L1	D	D1	Max. RPM	Fig.
C8-SF0250-3.15CP	1/4"	3.15"	1.75"	0.79"	1.06"	25K	9
C8-SF0250-5.12CP	1/4"	5.12"	1.75"	0.79"	1.06"	25K	9
C8-SF0375-3.54CP	3/8"	3.54"	2.00"	0.95"	1.26"	25K	9
C8-SF0375-5.12CP	3/8"	5.12"	2.00"	0.95"	1.26"	25K	9
C8-SF0500-3.54CP	1/2"	3.54"	2.00"	0.95"	1.26"	25K	9
C8-SF0500-5.12CP	1/2"	5.12"	2.00"	0.95"	1.26"	25K	9
C8-SF0625-3.74CP	5/8"	3.74"	1.75"	1.06"	1.34"	25K	9
C8-SF0625-5.12CP	5/8"	5.12"	1.75"	1.06"	1.34"	25K	9
C8-SF0750-3.74CP	3/4"	3.74"	2.25"	1.30"	1.65"	25K	9
C8-SF0750-5.12CP	3/4"	5.12"	2.25"	1.30"	1.65"	25K	9
C8-SF1000-3.94CP	1.0"	3.94"	2.25"	1.73"	2.09"	25K	9
C8-SF1000-5.12CP	1.0"	5.12"	2.25"	1.73"	2.09"	25K	9
C8-SF1250-3.94CP	1-1/4"	3.94"	2.25"	1.73"	2.09"	25K	9
C8-SF1250-5.12CP	1-1/4"	5.12"	2.25"	1.73"	2.09"	25K	9
C8-SF6-85CP	6mm	3.35"	1.75"	0.79"	1.06"	25K	9
C8-SF6-130CP	6mm	5.12"	1.75"	0.79"	1.06"	25K	9
C8-SF8-85CP	8mm	3.35"	1.75"	0.79"	1.06"	25K	9
C8-SF8-130CP	8mm	5.12"	1.75"	0.79"	1.06"	25K	9
C8-SF10-85CP	10mm	3.35"	2.00"	0.95"	1.26"	25K	9
C8-SF10-130CP	10mm	5.12"	2.00"	0.95"	1.26"	25K	9
C8-SF12-85CP	12mm	3.35"	2.00"	0.95"	1.26"	25K	9
C8-SF12-130CP	12mm	5.12"	2.00"	0.95"	1.26"	25K	9
C8-SF14-85CP	14mm	3.35"	1.75"	1.06"	1.34"	25K	9
C8-SF14-130CP	14mm	5.12"	1.75"	1.06"	1.34"	25K	9
C8-SF16-90CP	16mm	3.54"	1.75"	1.06"	1.34"	25K	9
C8-SF16-130CP	16mm	5.12"	1.75"	1.06"	1.34"	25K	9
C8-SF18-90CP	18mm	3.54"	2.25"	1.30"	1.65"	25K	9
C8-SF18-130CP	18mm	5.12"	2.25"	1.30"	1.65"	25K	9
C8-SF20-90CP	20mm	3.54"	2.25"	1.30"	1.65"	25K	9
C8-SF20-130CP	20mm	5.12"	2.25"	1.30"	1.65"	25K	9
C8-SF25-90CP	25mm	3.54"	2.25"	1.73"	2.09"	25K	9
C8-SF25-130CP	25mm	5.12"	2.25"	1.73"	2.09"	25K	9
C8-SF32-90CP	32mm	3.54"	2.25"	1.73"	2.09"	25K	9
C8-SF32-130CP	32mm	5.12"	2.25"	1.73"	2.09"	25K	9

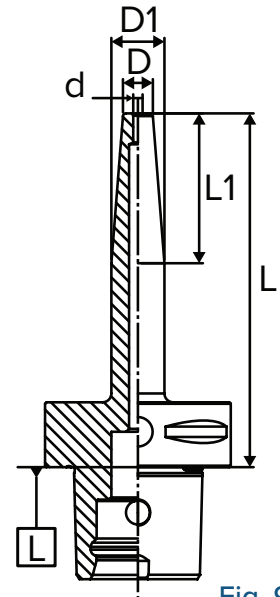
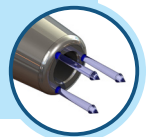


Fig. 9

"CP" stands for "Coolant Ported". Shrink fit is center-thru coolant capable. Contact us for additional coolant options.



## SHRINK FIT HOLDER ACCESSORIES

### COOLANT TUBE WRENCHES FOR HSK/POLYGON HOLDERS

Part Number	Description
<b>HSK63-WRENCH</b>	Wrench for HSK63 Coolant Tube
<b>HSK100-WRENCH</b>	Wrench for HSK100 Coolant Tube
<b>C4-WRENCH</b>	Wrench for C4 Coolant Tube
<b>C5-WRENCH</b>	Wrench for C5 Coolant Tube
<b>C6-WRENCH</b>	Wrench for C6 Coolant Tube
<b>C8-WRENCH</b>	Wrench for C8 Coolant Tube



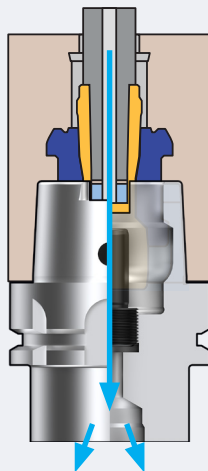
*Note: Coolant tube wrenches are needed to remove or install coolant tubes in HSK/Polygon Shrink Fit toolholders.*

### COOLANT TUBES FOR HSK/POLYGON HOLDERS

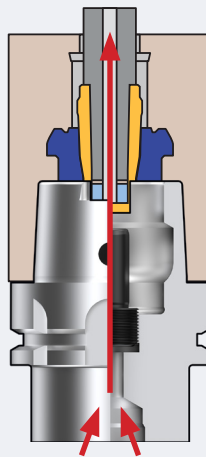
Part Number	Description
<b>HSK63-TUBE</b>	Coolant Tube for HSK63 holder
<b>HSK100-TUBE</b>	Coolant Tube for HSK100 holder
<b>C4-TUBE</b>	C4 Coolant Tube
<b>C5-TUBE</b>	C5 Coolant Tube
<b>C6-TUBE</b>	C6 Coolant Tube
<b>C8-TUBE</b>	C8 Coolant Tube



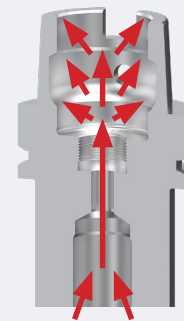
### WHY EVERY HSK TOOLHOLDER SHOULD HAVE A COOLANT TUBE INSTALLED



The Coolant Tube is connected and sealed with the Spindle Coolant Nozzle for Thru-Spindle Coolant (TSC) application.



With the Coolant Tube connected and sealed with the Spindle Coolant Nozzle, back-flow contaminants are contained.



Without the Coolant Tube connected and sealed to contain them, contaminants can back-flow through collet gaps.

These contaminants can flood the HSK chamber and cause damage to the clamping mechanism. They can also travel higher and can damage other parts like spindle bearings.

**Therefore - it is recommended that every HSK Holder have a coolant tube installed, regardless if Thru-Spindle Coolant is utilized or not.**

Contact your local Lyndex-Nikken representatives for information regarding special pricing or replacement coolant tubes.



## STRAIGHT SHANK EXTENSIONS

### FEATURES

- Excellent surface finish, extreme gripping and ideal for high-speed applications
- Pre-balanced up to 25,000 RPM
- Increase cutting tool life, material removal rate and workpiece accuracy
- All shrink fit holders 6mm (1/4") and above include a backup screw

**MATERIAL:** H11 High Alloy Steel **HARDNESS:** 52 HRc tempered



**T.I.R.**  
0.0001" in ID bore



**Coolant-Thru**  
Center-thru

**MILLING**



**REAMING**



**DRILLING**



*Please note that the maximum RPM listed in our catalog may vary depending on the toolholder shank, weight, balanceability and the G rating.*

### STRAIGHT SHANK EXTENSIONS

Part Number	d	L	L1	D	D1	Fig.
ST50-SF0125-6.30	1/8"	6.30"	1.81"	0.31"	0.50"	10
ST50-SF0187-6.30	3/16"	6.30"	1.81"	0.31"	0.50"	10
ST62-SF0125-6.30	1/8"	6.30"	3.01"	0.31"	0.63"	10
ST62-SF0187-6.30	3/16"	6.30"	3.01"	0.31"	0.63"	10
ST62-SF0250-6.30	1/4"	6.30"	1.50"	0.47"	0.63"	10
ST75-SF0250-6.30	1/4"	6.30"	2.68"	0.47"	0.75"	10
ST75-SF0312-6.30	5/16"	6.30"	1.16"	0.63"	0.75"	10
ST75-SF0375-6.30	3/8"	6.30"	1.16"	0.63"	0.75"	10
ST75-SF0500-6.30	1/2"	6.30"	0.41"	0.71"	0.75"	10
ST75-SF6-6.30	6mm	6.30"	0.87"	0.47"	0.75"	10
ST75-SF8-6.30	8mm	6.30"	1.02"	0.63"	0.75"	10
ST16M-SF3-160	3mm	6.30"	3.01"	0.32"	0.63"	10
ST16M-SF4-160	4mm	6.30"	3.01"	0.32"	0.63"	10
ST16M-SF5-160	5mm	6.30"	2.63"	0.36"	0.63"	10
ST16M-SF6-160	6mm	6.30"	1.50"	0.47"	0.63"	10
ST16M-SF8-160	8mm	6.30"	1.50"	0.48"	0.63"	10
ST20M-SF6-160	6mm	6.30"	3.01"	0.48"	0.79"	10
ST20M-SF8-160	8mm	6.30"	1.50"	0.63"	0.79"	10
ST20M-SF10-160	10mm	6.30"	1.50"	0.63"	0.79"	10

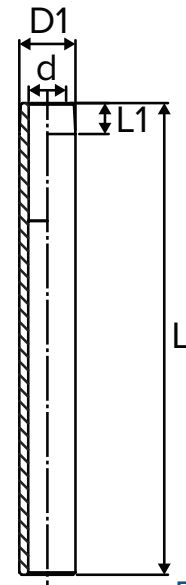
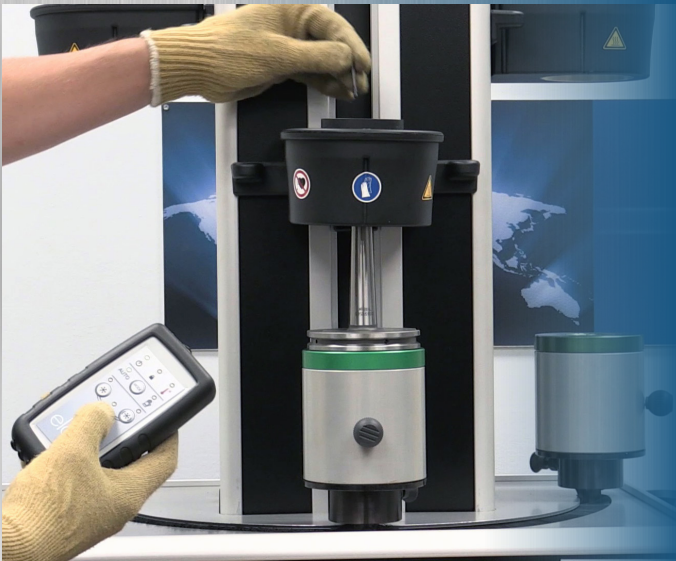


Fig. 10

# SHRINK FIT IN-DEPTH TRAINING AND LIVE DEMOS



## LEARN IN UNDER 30 MINUTES!

- Receive in-depth training on our Shrink Fit products to help maximize your productivity.
- Find out how Lyndex-Nikken's engineering, service group and product managers can further support your applications.

## THE INDUSTRY'S HIGHEST QUALITY SHRINK FIT LINE

- High Speed: shrinking from 2 to 7 seconds
- Flexible Range: shrinking from 2 to 40mm (0.078" to 1.575")



**To schedule a demo, contact your Lyndex-Nikken  
Regional Sales Manager or send an e-mail to:  
[sales@lyndexnikken.com](mailto:sales@lyndexnikken.com)**



847-367-4800 | [sales@lyndexnikken.com](mailto:sales@lyndexnikken.com)  
[lyndexnikken.com](http://lyndexnikken.com)

Connect With Us:

