

MILLING CHUCKS



MILLING CHUCKS

MILLING CHUCKS

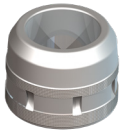


MILLING CHUCK FEATURES

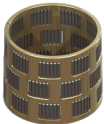


Nikken is the inventor of the original Milling Chuck (U.S. Patent 7018919). Since its introduction in 1963, Nikken has sold over 3,000,000 Milling Chucks worldwide and has never stopped improving upon its original design. Featuring multi-roller bearings, spiral coolant slots, and a heavy-duty nut, the Milling Chuck is the most reliable and powerful toolholder available.

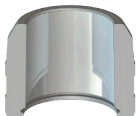
CONSTRUCTION AND DESIGN



Forged Nickel Chrome Molybdenum 4340 ground on taper and base.



Staggered, coated steel cage packs 140% more needle rollers than competitors. This provides more gripping power. The retainer is NOT made of phosphor bronze, but rather of special steel which will never break.



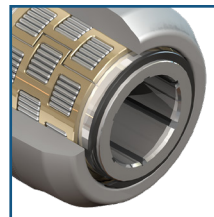
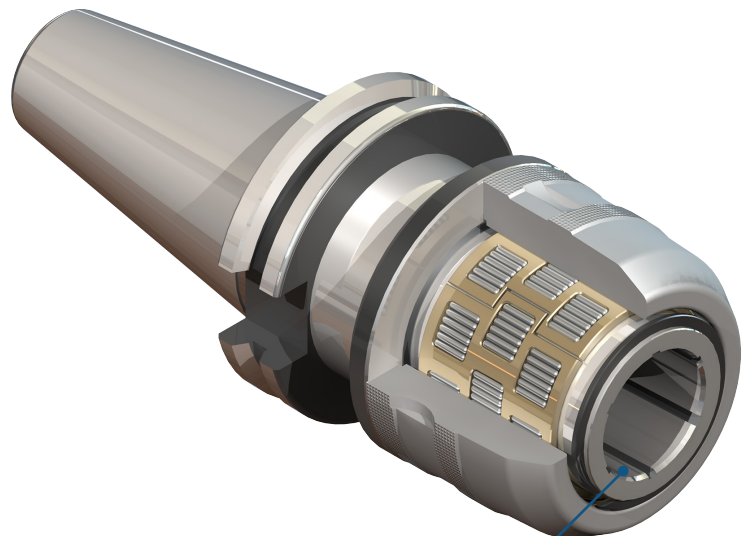
Thick nut exerts immense gripping strength by collapsing tight taper on the mill chuck body.



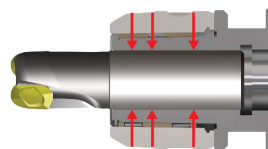
Solid 1-piece base and thick wall provides rigidity for heavy machining.



All milling chucks are cryogenically treated after heat treatment to stabilize concentrations of carbon. This prevents deformation and cracking when under stress for the life of the toolholder.



Inner bore coolant slots project coolant at 2 degrees, assuring high pressure and volume of coolant during high RPM operations.



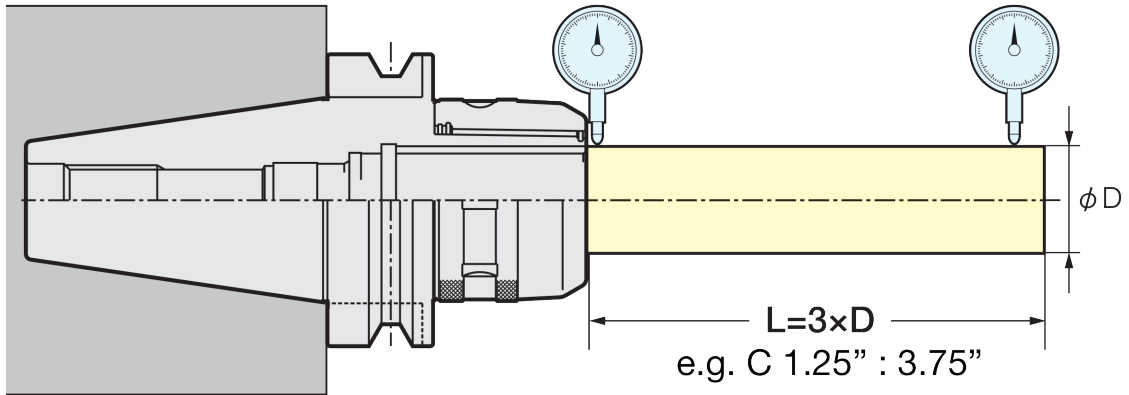
STRONGEST MECHANICALLY GRIPPING HOLDER IN THE WORLD!



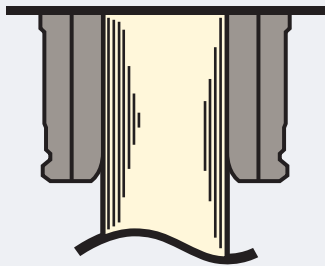
MILLING CHUCK FEATURES

Superior Run Out Accuracy

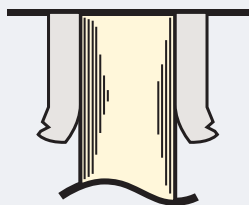
Within 0.0002"



- Flange and taper grinding of tool results in minimal T.I.R.
- Flange grinding is done for Taper Plus only and not for standard CAT/BT Toolholders
- 0.0002 at 3.75" from the nose—guaranteed



**NIKKEN
MILLING CHUCK**



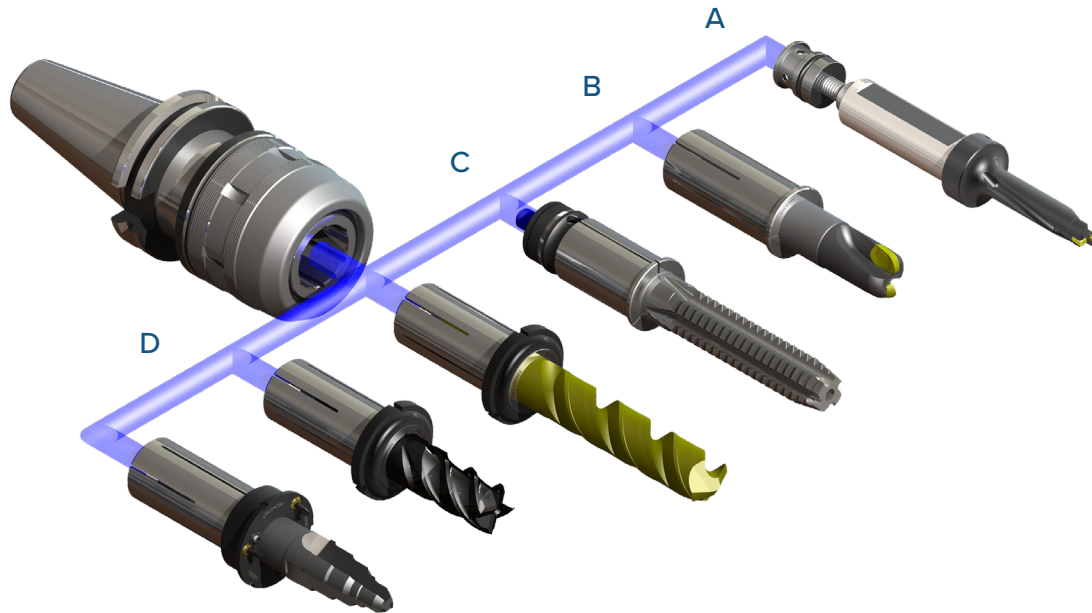
**OTHER
MILLING CHUCKS**

**STRONGEST GRIP
IN THE WORLD
UP TO 3,500 FT-LBS.!**

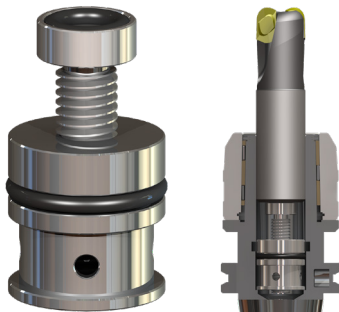
Nikken's patented Milling Chuck design allows clamping force to be distributed evenly around the entire cutting tool shank. Gripping force up to 3,600 ft-lbs. can be applied ensuring optimal cutting performance and rigidity.

MILLING CHUCK COLLET SYSTEM

Nikken Milling Chuck Collets provide uniform contact with cutting tool shanks manufactured with the most stringent specifications. When using with shanks that have h7 tolerance, the Collets produce much more gripping force and rigidity than traditional taper collets.



A



DIRECT COOLANT PLUG (THRU-TOOL)

- By combining a backup screw and coolant plug in one, the inner diameter of the milling chuck can be used with or without coolant
- Coolant through cutter ports can easily be sealed by an o-ring located at the face of the coolant plug
- 1200 PSI capable
- Excellent for high torque deep drilling
- Available for inch and metric shanks

B



KM COLLET

- High Precision KM reduction collets extend the chucking flexibility of the milling chuck. All inch and metric standard sizes can be held by the same toolholder.
- Can be used in conjunction with a coolant back up screw for high pressure (1200 PSI) applications.

C



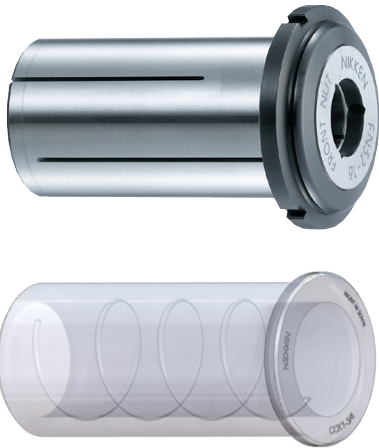
NK COLLET

- High precision inch and metric NK reduction collets extend the chucking flexibility of the milling chuck and offer a built in back up screw for repeatability when replacing cutters.
- Easy set up since the NK fits directly into the inner diameter of the milling chuck.



MILLING CHUCK COOLANT COLLET SYSTEM

D

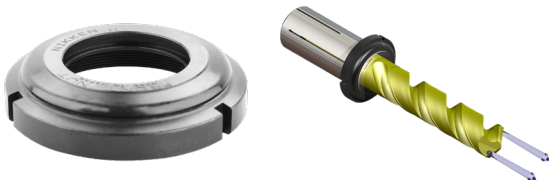


CCK COLLET: COOLANT-THRU

- High Pressure coolant application through existing slots
- CCK reduction collets offers flexibility to hold both metric and inch standard shanks
- Straight collet design eliminates taper tolerance variation between mating surfaces
- Many options available to configure how coolant is expelled
- The spiral grooves provide spaces for the oil film on the cutter shank and ID surface to escape to, which in turn helps maintain the gripping force

COOLANT-THRU NUT: CKFN-C

When paired with the Nikken Milling Chuck Coolant Collet (CCK), the Coolant-Thru Nut forms a complete seal around the cutting tool. This forms an ideal combination for Coolant-Thru cutting tools.



- Internal durable O-ring seals for high pressure (750 PSI)
- Prevents swarf and chips from packing on the collet face
- Available for inch and metric shanks

Both the Coolant Collet and the Coolant-Thru Nut must be ordered on size for each cutting tool (see pages 153-154 for sizes and part numbers).

JET-SLOTTED NUT: CKFN

When paired with the Nikken Milling Chuck Coolant Collet (CCK), the Jet-Slotted Nut allows coolant to travel down the shank of the cutting tool to the cutting edge. This combination is ideal for non Coolant-Thru cutting tools.



- 3 angled slots keep high pressure coolant (up to 1200 PSI) aimed toward the periphery of the cutter, even at high RPM
- Helps remove chips during deep pocketing applications
- Available for inch and metric shanks

Both the Coolant Collet and the Jet-Slotted Nut must be ordered on size for each cutting tool (see pages 153-154 for sizes and part numbers).

COOLANT NUT WITH ADJUSTABLE NOZZLES: CKFN-MN



- 3 adjustable nozzles help channel high pressure coolant to different cutter points (up to 750 PSI)
- Excellent for tools with multiple cutter points
- Available for inch and metric shanks

WHY UPGRADE TO THE NIKKEN MILLING CHUCK?

The Nikken Milling Chuck is a renowned universal toolholder that has proven its efficiency for years all over the world. Featuring a revolutionary design and collet system, the Nikken Milling Chuck allows for high-speed applications up to 25,000 RPM and offers incredible benefits compared to standard End Mill Holders such as higher accuracy and higher concentricity.

See below to find out what makes our Nikken Milling Chuck the best choice for any milling application.

LYNDEX-NIKKEN MILLING CHUCK

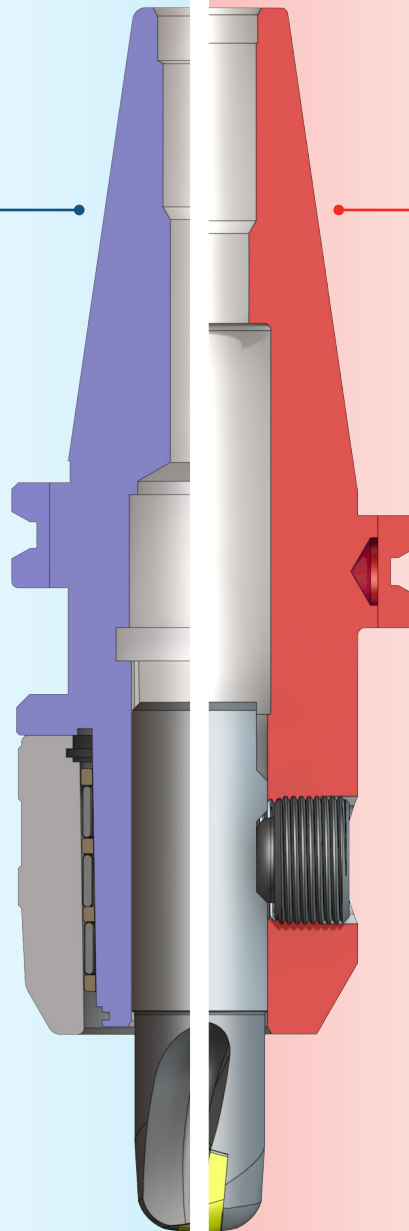
END MILL HOLDER

AT3 or better taper tolerance

AT4 taper tolerance

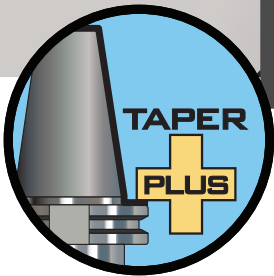
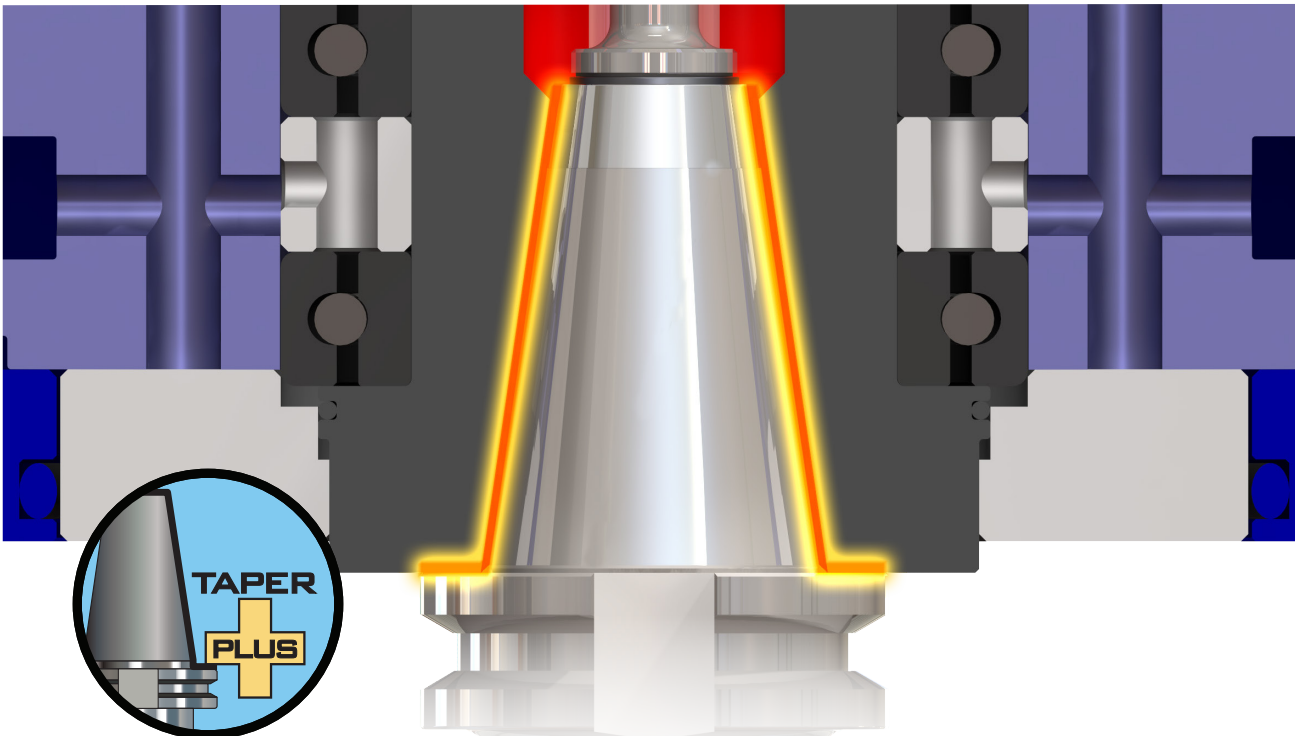
- Most powerful collet chuck in the world
- Symmetrical design—pre-balanced body and nut allow the milling chuck to operate beyond 25,000 RPM
- Outside bearing nut mechanically induces tight taper of the milling chuck to evenly collapse onto the cutting shank for high precision T.I.R.

- 120 year-old concept for holding tools
- Non-symmetrical design creates imbalance
- Requires tools with Weldon flats which create further imbalance
- Set screw shifts cutter off center which creates unacceptable run-out for precision milling





TAPER PLUS - DUAL CONTACT TOOLHOLDERS



Look for the Taper Plus logo for dual-taper and flange contact availability.

DUAL Taper & Flange Contact Advantages

- High Rigidity for smooth and stable cutting
- Vibration Dampening for increased productivity
- Outstanding Runout Accuracy for longer tool life
- Interchangeable between Standard and Dual Face Contact spindles for greater flexibility

The Power of the Dampening Effect

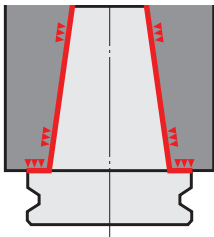
Taper and Flange Contact establishes 53.3% more surface area contact than just the taper alone, creating a dampening effect that eliminates chatter and vibration.

With the additional flange contact becoming a supportive cantilever, cutting rigidity is highly improved.

High Quality Taper Grinding AT3 or better taper tolerance

- All 40 taper tool angles are manufactured within ± 0.0011 degrees angular tolerance
- Largest diameter of taper (where rigidity is established) is held within ± 80 millionths (.00008")
- Precision ground taper ensures 80% or better taper contact

CAT/BT Dual Face Contact Spindle + Taper Plus Toolholder



CAT MILLING CHUCKS

FEATURES

- Nikken patented design
- Nut body contact, nose clamping and anti-vibration mechanism
- Thick body and internal slots provide extremely strong chucking torque and rigidity
- Quiet and stable heavy milling
- 140% more bearing surface than competitors' milling chucks



T.I.R.
<0.0002" at 3xD



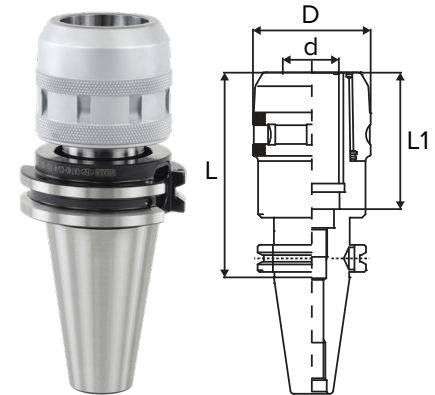
Coolant-Thru
Thru-tool coolant



Please note that the maximum RPM listed in our catalog may vary depending on the toolholder shank, weight, balanceability and the G rating.

CAT40

Part Number	Collet Series	Clamping Range	Wrench	d	L (mm)	L	L1	D	Max. RPM
CAT40-C3/4-70U-IDU*	KM3/4 or CCK3/4	0.125 - 0.750"	9HC22	0.75"	70	2.76"	3.15"	2.03"	20K
CAT40-C3/4-85U-IDU	KM3/4 or CCK3/4	0.125 - 0.750"	9HC22	0.75"	85	3.35"	3.15"	2.03"	20K
CAT40-C3/4-105U-IDU	KM3/4 or CCK3/4	0.125 - 0.750"	9HC22	0.75"	105	4.13"	3.15"	2.03"	20K
CAT40-C3/4-120U-IDU	KM3/4 or CCK3/4	0.125 - 0.750"	9HC22	0.75"	120	4.72"	3.15"	2.03"	20K
CAT40-C1-85U-IDU	KM1 or CCK1	0.125 - 1.000"	9HC25	1.00"	85	3.35"	3.15"	2.34"	20K
CAT40-C1-105U-IDU	KM1 or CCK1	0.125 - 1.000"	9HC25	1.00"	105	4.13"	3.15"	2.34"	20K
CAT40-C1.1/4-85U-IDU**	KM1.1/4 or CCK1.1/4	0.187 - 1.250"	9HC32	1.25"	85	3.35"	3.03"	2.52"	20K
CAT40-C1.1/4SL-105U-IDU	KM1.1/4 or CCK1.1/4	0.187 - 1.250"	9HC32	1.25"	105	4.13"	3.03"	2.72"	20K
CAT40-C1.1/4SL-120U-IDU	KM1.1/4 or CCK1.1/4	0.187 - 1.250"	9HC32	1.25"	120	4.72"	3.15"	2.72"	20K
CAT40-C32-105U-IDU	KM32 or CCK32	6 - 32mm	9HC32	32mm	105	4.13"	3.03"	2.52"	20K



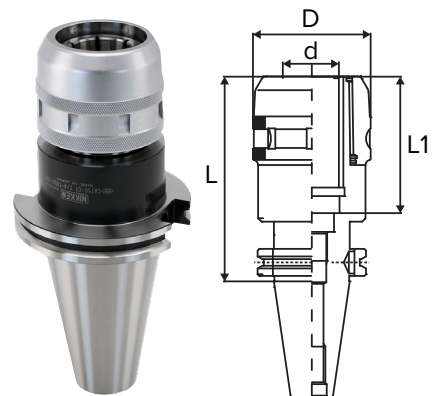
Note:

- Wrench not included.
- *CAT40-C3/4-70U Milling Chuck does not have safety recess.
- **Coolant-Thru nut and slotted nut will not fit CAT40-C1.1/4-85U (old generation)



CAT50

Part Number	Collet Series	Clamping Range	Wrench	d	L (mm)	L	L1	D	Max. RPM
CAT50-C3/4-105U-IDU	KM3/4 or CCK3/4	0.125 - 0.750"	9HC22	0.75"	105	4.13"	3.15"	2.03"	8K
CAT50-C3/4-135U-IDU	KM3/4 or CCK3/4	0.125 - 0.750"	9HC22	0.75"	135	5.31"	3.15"	2.03"	6K
CAT50-C3/4-165U-IDU	KM3/4 or CCK3/4	0.125 - 0.750"	9HC22	0.75"	165	6.50"	3.15"	2.03"	6K
CAT50-C1-105U-IDU	KM1 or CCK1	0.125 - 1.000"	9HC25	1.00"	105	4.13"	3.15"	2.34"	8K
CAT50-C1-135U-IDU	KM1 or CCK1	0.125 - 1.000"	9HC25	1.00"	135	5.31"	3.15"	2.34"	6K
CAT50-C1.1/4-90U-IDU	KM1.1/4 or CCK1.1/4	0.187 - 1.250"	9HC32	1.25"	90	3.54"	4.13"	2.72"	8K
CAT50-C1.1/4-105U-IDU	KM1.1/4 or CCK1.1/4	0.187 - 1.250"	9HC32	1.25"	105	4.13"	4.13"	2.72"	8K
CAT50-C1.1/4-135U-IDU	KM1.1/4 or CCK1.1/4	0.187 - 1.250"	9HC32	1.25"	135	5.31"	4.13"	2.72"	6K
CAT50-C1.1/4-165U-IDU	KM1.1/4 or CCK1.1/4	0.187 - 1.250"	9HC32	1.25"	165	6.50"	4.13"	2.72"	6K
CAT50-C2-125U-IDU	KM2 or CCK2	1.000 - 2.000"	9HC50	2.00"	125	4.92"	3.23"	4.13"	6K
CAT50-C32-105U-IDU	KM32 or CCK32	6 - 32mm	9HC32	32mm	105	4.13"	4.13"	2.72"	8K
CAT50-C32-165U-IDU	KM32 or CCK32	6 - 32mm	9HC32	32mm	165	6.50"	4.13"	2.72"	6K



Note: Wrench not included.



KM & NK Collets
Pages 151-152



Spanner Wrench
Page 155



Back-Up Screw
Page 155



Coolant-Thru & Slotted Nuts
Page 153-154

MILLING CHUCKS

CAT HIGH-SPEED MILLING CHUCKS

CAT40 HIGH SPEED

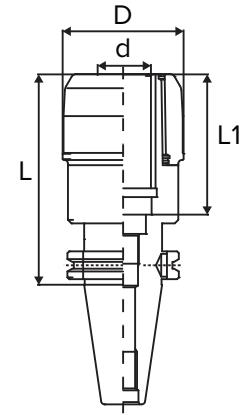
Part Number	Collet Series	Clamping Range	High-Speed Spanner Wrench	d	L (mm)	L	L1	D	Max. RPM
CAT40-C3/4-85UG-IDU	KM3/4 or CCK3/4	0.125-0.750"	GH20	0.75"	85	3.35"	3.15"	2.05"	25K
CAT40-C3/4-105UG-IDU	KM3/4 or CCK3/4	0.125-0.750"	GH20	0.75"	105	4.72"	3.15"	2.05"	25K
CAT40-C3/4-120UG-IDU	KM3/4 or CCK3/4	0.125-0.750"	GH20	0.75"	120	4.72"	3.15"	2.05"	25K
CAT40-C1-85UG-IDU	KM1 or CCK1	0.125-1.000"	GH25	1.00"	85	3.35"	3.15"	2.36"	20K
CAT40-C1-105UG-IDU	KM1 or CCK1	0.125-1.000"	GH25	1.00"	105	4.13"	3.15"	2.36"	20K
CAT40-C1.1/4SL-105UG-IDU	KM1.1/4 or CCK1.1/4	0.187-1.250"	GH32	1.25"	105	4.13"	3.03"	2.72"	20K
CAT40-C1.1/4SL-120UG-IDU	KM1.1/4 or CCK1.1/4	0.187-1.250"	GH32	1.25"	120	4.72"	3.15"	2.72"	20K

Note:

- High-speed spanner wrench not included.
- High-speed CAT40 Milling Chucks use special high-speed spanner wrenches.



Available in **TAPER PLUS+**
Dual-taper and flange contact available.
See page 143.



CAT50 HIGH SPEED

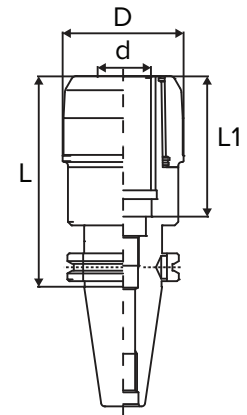
Part Number	Collet Series	Clamping Range	High-Speed Spanner Wrench	d	L (mm)	L	L1	D	Max. RPM
CAT50-C3/4-105UG-IDU	KM3/4 or CCK3/4	0.125-0.750"	GH20	0.75"	105	4.13"	3.15"	2.05"	20K
CAT50-C3/4-135UG-IDU	KM3/4 or CCK3/4	0.125-0.750"	GH20	0.75"	135	5.31"	3.15"	2.05"	20K
CAT50-C1-105UG-IDU	KM1 or CCK1	0.125-1.000"	GH25	1.00"	105	4.13"	3.15"	2.36"	15K
CAT50-C1-135UG-IDU	KM1 or CCK1	0.125-1.000"	GH25	1.00"	135	5.31"	3.15"	2.36"	15K
CAT50-C1.1/4-105UG-IDU	KM1.1/4 or CCK1.1/4	0.187-1.250"	GH32	1.25"	105	4.13"	4.13"	2.72"	15K
CAT50-C1.1/4-135UG-IDU	KM1.1/4 or CCK1.1/4	0.187-1.250"	GH32	1.25"	135	5.31"	4.13"	2.72"	15K

Note:

- High-speed spanner wrench not included.
- High-speed CAT50 Milling Chucks use special high-speed spanner wrenches.



Available in **TAPER PLUS+**
Dual-taper and flange contact available.
See page 143.



KM & NK Collets
Pages 151-152



Spanner Wrench
Page 155

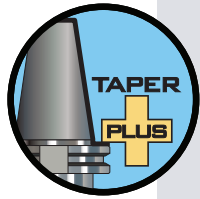


Back-Up Screw
Page 155



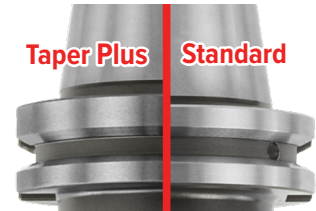
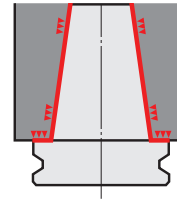
Coolant-Thru & Slotted Nuts
Page 153-154

TAPER PLUS CAT MILLING CHUCKS



Taper Plus Advantages

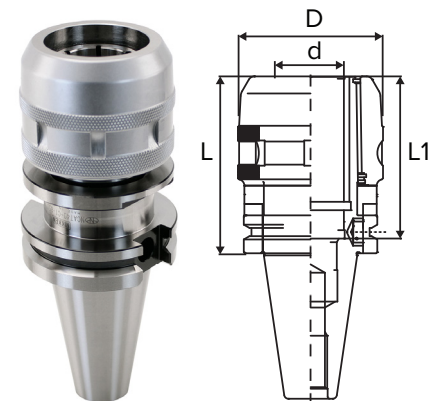
- Outstanding runout accuracy for longer tool life
- Vibration dampening for increased productivity
- High rigidity for smooth and stable cutting
- Interchangeable between standard and dual face contact spindles
- 53% more surface area contact than just the taper alone



TAPER PLUS - CAT40

Part Number	Collet Series	Clamping Range	Wrench	d	L (mm)	L	L1	D	Max. RPM
NCAT40-C3/4-70U-IDU	KM3/4 or CCK3/4	0.125-1.000"	9HC22	0.75"	70	2.76"	3.15"	2.05"	20K
NCAT40-C3/4-85U-IDU	KM3/4 or CCK3/4	0.125-1.000"	9HC22	0.75"	85	3.35"	3.15"	2.03"	20K
NCAT40-C3/4-105U-IDU	KM3/4 or CCK3/4	0.125-1.000"	9HC22	0.75"	105	4.13"	3.15"	2.03"	20K
NCAT40-C3/4-120U-IDU	KM3/4 or CCK3/4	0.125-1.000"	9HC22	0.75"	120	4.72"	3.15"	2.03"	20K
NCAT40-C1-85U-IDU	KM1 or CCK1	0.125-1.000"	9HC25	1.00"	85	3.35"	3.15"	2.34"	20K
NCAT40-C1-105U-IDU	KM1 or CCK1	0.125-1.000"	9HC25	1.00"	105	4.13"	3.15"	2.34"	20K
NCAT40-C1.1/4SL-105U-IDU	KM1.1/4 or CCK1.1/4	0.187-1.250"	9HC32	1.25"	105	4.13"	3.03"	2.72"	20K
NCAT40-C1.1/4SL-120U-IDU	KM1.1/4 or CCK1.1/4	0.187-1.250"	9HC32	1.25"	120	4.72"	3.03"	2.72"	20K
NCAT40-C32-105U-IDU	KM32 or CCK32	6 - 32mm	9HC32	32mm	105	4.13"	3.03"	2.52"	20K

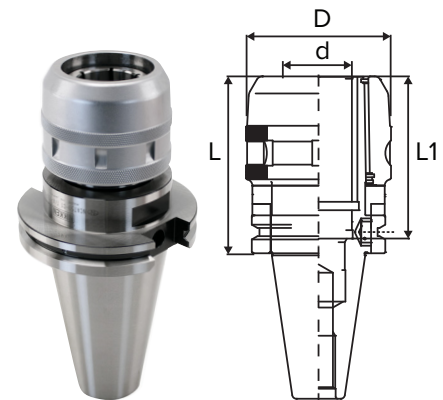
Note: "N" denotes Taper Plus dual face contact.



TAPER PLUS - CAT50

Part Number	Collet Series	Clamping Range	Wrench	d	L (mm)	L	L1	D	Max. RPM
NCAT50-C3/4-105U-IDU	KM3/4 or CCK3/4	0.125-0.750"	9HC22	0.75"	105	4.13"	3.15"	2.03"	8K
NCAT50-C3/4-135U-IDU	KM3/4 or CCK3/4	0.125-0.750"	9HC22	0.75"	135	5.31"	3.15"	2.03"	6K
NCAT50-C3/4-165U-IDU	KM3/4 or CCK3/4	0.125-0.750"	9HC22	0.75"	165	6.50"	3.15"	2.03"	6K
NCAT50-C1-105U-IDU	KM1 or CCK1	0.125-1.000"	9HC25	1.00"	105	4.13"	3.15"	2.34"	8K
NCAT50-C1-135U-IDU	KM1 or CCK1	0.125-1.000"	9HC25	1.00"	135	5.31"	3.15"	2.34"	6K
NCAT50-C1.1/4-90U-IDU	KM1.1/4 or CCK1.1/4	0.187-1.250"	9HC32	1.25"	90	3.54"	3.19"	2.72"	8K
NCAT50-C1.1/4-105U-IDU	KM1.1/4 or CCK1.1/4	0.187-1.250"	9HC32	1.25"	105	4.13"	3.19"	2.72"	8K
NCAT50-C1.1/4-135U-IDU	KM1.1/4 or CCK1.1/4	0.187-1.250"	9HC32	1.25"	135	5.31"	3.19"	2.72"	6K
NCAT50-C1.1/4-165U-IDU	KM1.1/4 or CCK1.1/4	0.187-1.250"	9HC32	1.25"	165	6.50"	3.19"	2.72"	6K
NCAT50-C2-125U-IDU	KM2 or CCK2	1.000-2.000"	9HC50	2.00"	125	4.92"	3.23"	4.13"	6K

Note: "N" denotes Taper Plus dual face contact.

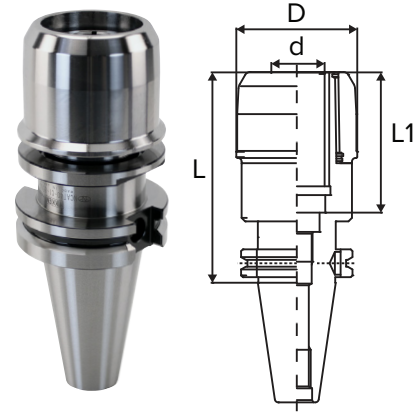


TAPER PLUS CAT HIGH-SPEED MILLING CHUCKS

TAPER PLUS - CAT40 HIGH SPEED

Part Number	Collet Series	Clamping Range	High-Speed Spanner Wrench	d	L (mm)	L	L1	D	Max. RPM
NCAT40-C3/4-70UG-IDU	KM3/4 or CCK3/4	0.125-0.750"	GH20	0.75"	70	2.76"	3.15"	1.89"	25K
NCAT40-C3/4-85UG-IDU	KM3/4 or CCK3/4	0.125-0.750"	GH20	0.75"	85	3.35"	3.15"	1.89"	25K
NCAT40-C3/4-105UG-IDU	KM3/4 or CCK3/4	0.125-0.750"	GH20	0.75"	105	4.13"	3.15"	1.89"	25K
NCAT40-C3/4-120UG-IDU	KM3/4 or CCK3/4	0.125-0.750"	GH20	0.75"	120	4.72"	3.15"	1.89"	25K
NCAT40-C1-85UG-IDU	KM1 or CCK1	0.125-1.000"	GH25	1.00"	85	3.35"	3.15"	2.15"	20K
NCAT40-C1-105UG-IDU	KM1 or CCK1	0.125-1.000"	GH25	1.00"	105	4.13"	3.15"	2.15"	20K
NCAT40-C1.1/4SL-85UG-IDU	KM1.1/4 or CCK1.1/4	0.125-1.250"	GH32	1.25"	85	3.35"	3.03"	2.68"	20K
NCAT40-C1.1/4SL-105UG-IDU	KM1.1/4 or CCK1.1/4	0.187-1.250"	GH32	1.25"	105	4.13"	3.03"	2.68"	20K

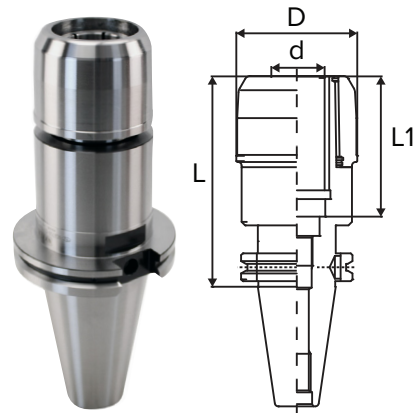
Note: "N" denotes Taper Plus dual face contact.



TAPER PLUS - CAT50 HIGH SPEED

Part Number	Collet Series	Clamping Range	High-Speed Spanner Wrench	d	L (mm)	L	L1	D	Max. RPM
NCAT50-C3/4-105UG-IDU	KM3/4 or CCK3/4	0.125-0.750"	GH20	0.75"	105	4.13"	3.15"	1.89"	20K
NCAT50-C3/4-135UG-IDU	KM3/4 or CCK3/4	0.125-0.750"	GH20	0.75"	135	5.31"	3.15"	1.89"	20K
NCAT50-C1-105UG-IDU	KM1 or CCK1	0.125-1.000"	GH25	1.00"	105	4.13"	3.15"	2.15"	15K
NCAT50-C1-135UG-IDU	KM1 or CCK1	0.125-1.000"	GH25	1.00"	135	5.31"	3.15"	2.15"	15K
NCAT50-C1.1/4-90UG-IDU	KM1.1/4 or CCK1.1/4	0.187-1.250"	GH32	1.25"	90	3.54"	3.19"	2.68"	15K
NCAT50-C1.1/4-105UG-IDU	KM1.1/4 or CCK1.1/4	0.187-1.250"	GH32	1.25"	105	4.13"	3.19"	2.68"	15K
NCAT50-C1.1/4-135UG-IDU	KM1.1/4 or CCK1.1/4	0.187-1.250"	GH32	1.25"	135	5.31"	3.19"	2.68"	15K

Note: "N" denotes Taper Plus dual face contact.



BT MILLING CHUCKS

FEATURES

- Nikken patented design
- Nut body contact, nose clamping and anti-vibration mechanism
- Thick body and internal slots provide extremely strong chucking torque and rigidity
- Quiet and stable heavy milling
- 140% more bearing surface than competitors' milling chucks



T.I.R.
<0.0002" at 3xD



Coolant-Thru
Thru-tool coolant

MILLING



REAMING



DRILLING



Please note that the maximum RPM listed in our catalog may vary depending on the toolholder shank, weight, balanceability and the G rating.

BT30

Part Number	Collet Series	Clamping Range	Wrench	d	L (mm)	L	L1	D	Max. RPM
BT30-C3/4-75*	KM3/4 or CCK3/4	0.125-0.750"	9HC22	0.75"	75	2.95"	3.15"	2.03"	12K

Note:

- Wrench not included.
- "*" indicates stubby style.



Available in **TAPER PLUS+**
Dual-taper and flange contact

BT40

Part Number	Collet Series	Clamping Range	Wrench	d	L (mm)	L	L1	D	Max. RPM
BT40-C3/4-70*	KM3/4 or CCK3/4	0.125-0.750"	9HC22	0.75"	70	2.76"	3.15"	2.03"	8K
BT40-C3/4-105	KM3/4 or CCK3/4	0.125-0.750"	9HC22	0.75"	105	4.13"	3.15"	2.03"	8K
BT40-C1-70*	KM1 or CCK1	0.125-1.000"	9HC25	1.00"	70	2.76"	3.15"	2.34"	8K
BT40-C1-90	KM1 or CCK1	0.125-1.000"	9HC25	1.00"	90	3.54"	3.15"	2.34"	8K
BT40-C1.1/4-85	KM1.1/4 or CCK1.1/4	0.187-1.250"	9HC32	1.25"	85	3.35"	3.03"	2.72"	8K
BT40-C1.1/4-120	KM1.1/4 or CCK1.1/4	0.187-1.250"	9HC32	1.25"	120	4.72"	4.13"	2.72"	8K
BT40-C32-105	KM32 or CCK32	6 - 32mm	9HC32	32mm	105	4.13"	3.54"	2.72"	8K

Note:

- Wrench not included.
- "*" indicates stubby style.

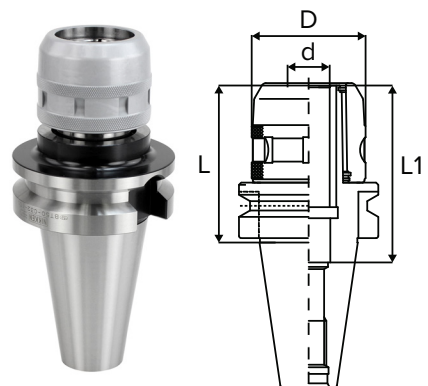
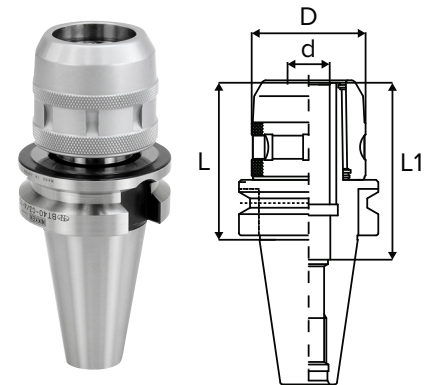


Available in **TAPER PLUS+**
Dual-taper and flange contact

BT50

Part Number	Collet Series	Clamping Range	Wrench	d	L (mm)	L	L1	D	Max. RPM
BT50-C3/4-105	KM3/4 or CCK3/4	0.125-0.750"	9HC22	0.75"	105	4.13"	3.15"	2.03"	8K
BT50-C3/4-135	KM3/4 or CCK3/4	0.125-0.750"	9HC22	0.75"	135	5.31"	3.15"	2.03"	8K
BT50-C1-105	KM1 or CCK1	0.125-1.000"	9HC25	1.00"	105	4.13"	3.15"	2.34"	8K
BT50-C1-135	KM1 or CCK1	0.125-1.000"	9HC25	1.00"	135	5.31"	4.13"	2.34"	8K
BT50-C1.1/4-90	KM1.1/4 or CCK1.1/4	0.187-1.250"	9HC32	1.25"	90	3.54"	4.13"	2.72"	8K
BT50-C1.1/4-105	KM1.1/4 or CCK1.1/4	0.187-1.250"	9HC32	1.25"	105	4.13"	4.13"	2.72"	8K
BT50-C1.1/4-135	KM1.1/4 or CCK1.1/4	0.187-1.250"	9HC32	1.25"	135	5.31"	4.13"	2.72"	6K
BT50-C32-90	KM32 or CCK32	6 - 32mm	9HC32	32mm	90	3.54"	4.13"	2.72"	8K
BT50-C32-105	KM32 or CCK32	6 - 32mm	9HC32	32mm	105	4.13"	4.13"	2.72"	8K
BT50-C32-120	KM32 or CCK32	6 - 32mm	9HC32	32mm	120	4.72"	4.13"	2.72"	8K
BT50-C32-135	KM32 or CCK32	6 - 32mm	9HC32	32mm	135	5.31"	4.13"	2.72"	6K
BT50-C32-165	KM32 or CCK32	6 - 32mm	9HC32	32mm	165	6.50"	4.13"	2.72"	6K
BT50-C32-200	KM32 or CCK32	6 - 32mm	9HC32	32mm	200	7.87"	4.13"	2.72"	2.4K
BT50-C32-250	KM32 or CCK32	6 - 32mm	9HC32	32mm	250	9.84"	4.13"	2.72"	2.4K
BT50-C32-300	KM32 or CCK32	6 - 32mm	9HC32	32mm	300	11.81"	4.13"	2.72"	2.4K
BT50-C32-400	KM32 or CCK32	6 - 32mm	9HC32	32mm	400	15.75"	4.13"	2.72"	2.4K
BT50-C32-500	KM32 or CCK32	6 - 32mm	9HC32	32mm	500	19.69"	4.13"	2.72"	2.4K
BT50-C2-105	KM2 or CCK2	1.000-2.000"	9HC50	2.00"	105	4.13"	3.54"	4.13"	6K

Note: Wrench not included.



MILLING CHUCKS

BT HIGH-SPEED MILLING CHUCKS

BT30 HIGH SPEED

Part Number	Collet Series	Clamping Range	High-Speed Spanner Wrench	d	L (mm)	L	L1	D	Max. RPM
BT30-C3/4-75G	KM3/4 or CCK3/4	0.125-0.750"	GH20	0.75"	75	2.95"	3.15"	1.89"	30K

Note:

- High-speed spanner wrench not included
- High-speed BT30 Milling Chucks use special high-speed spanner wrenches.



Available in **TAPER PLUS+**
Dual-taper and flange contact

BT40 HIGH SPEED

Part Number	Collet Series	Clamping Range	High-Speed Spanner Wrench	d	L (mm)	L	L1	D	Max. RPM
BT40-C3/4-70G*	KM3/4 or CCK3/4	0.125-0.750"	GH20	0.75"	70	2.76"	3.15"	2.05"	25K
BT40-C3/4-105G	KM3/4 or CCK3/4	0.125-0.750"	GH20	0.75"	105	4.13"	3.15"	2.05"	25K
BT40-C1-70G*	KM1 or CCK1	0.125-1.000"	GH25	1.00"	70	2.76"	3.15"	2.15"	20K
BT40-C1-90G	KM1 or CCK1	0.125-1.000"	GH25	1.00"	90	3.54"	3.15"	2.15"	20K
BT40-C1.1/4-85G	KM1.1/4 or CCK1.1/4	0.187-1.250"	GH32	1.25"	85	3.35"	3.03"	2.68"	20K
BT40-C1.1/4-120G	KM1.1/4 or CCK1.1/4	0.187-1.250"	GH32	1.25"	120	4.72"	4.13"	2.68"	20K
BT40-C32-105G	KM32 or CCK32	6 - 32mm	9HC32	32mm	105	4.13"	3.54"	2.68"	20K

Note:

- "*" indicates stubby style.
- High-speed spanner wrench not included.
- High-speed BT40 Milling Chucks use special high-speed spanner wrenches.



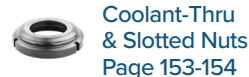
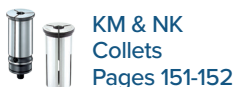
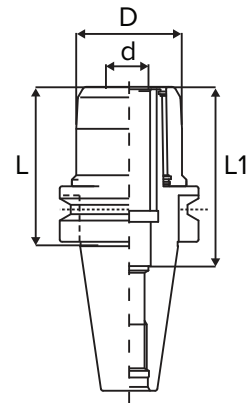
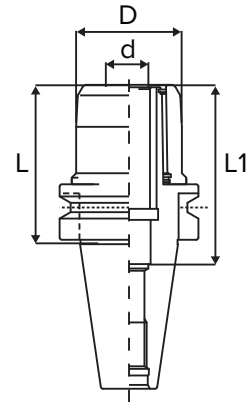
Available in **TAPER PLUS+**
Dual-taper and flange contact

BT50 HIGH SPEED

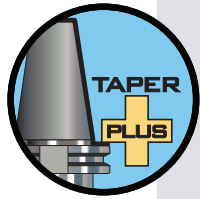
Part Number	Collet Series	Clamping Range	High-Speed Spanner Wrench	d	L (mm)	L	L1	D	Max. RPM
BT50-C3/4-105G	KM3/4 or CCK3/4	0.125-0.750"	GH20	0.75"	105	4.13"	3.15"	1.89"	20K
BT50-C3/4-135G	KM3/4 or CCK3/4	0.125-0.750"	GH20	0.75"	135	5.31"	3.15"	1.89"	20K
BT50-C1-105G	KM1 or CCK1	0.125-1.000"	GH25	1.00"	105	4.13"	3.15"	2.15"	15K
BT50-C1-135G	KM1 or CCK1	0.125-1.000"	GH25	1.00"	135	5.31"	3.15"	2.15"	15K
BT50-C1.1/4-90G	KM1.1/4 or CCK1.1/4	0.187-1.250"	GH32	1.25"	90	3.54"	4.13"	2.68"	15K
BT50-C1.1/4-135G	KM1.1/4 or CCK1.1/4	0.187-1.250"	GH32	1.25"	135	5.31"	4.13"	2.68"	15K
BT50-C32-90G	KM32 or CCK32	6 - 32mm	9HC32	32mm	90	3.54"	4.13"	2.68"	15K
BT50-C32-165G	KM32 or CCK32	6 - 32mm	9HC32	32mm	165	6.50"	4.13"	2.68"	15K

Note:

- High-speed spanner wrench not included.
- High-speed BT50 Milling Chucks use special high-speed spanner wrenches.

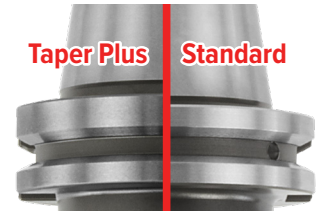
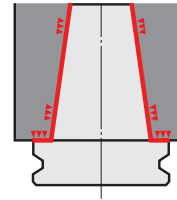


TAPER PLUS BT MILLING CHUCKS



Taper Plus Advantages

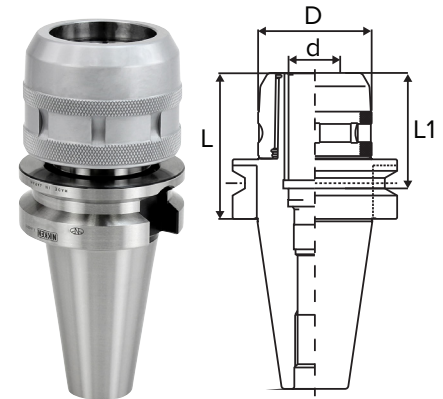
- Outstanding runout accuracy for longer tool life
- Vibration dampening for increased productivity
- High rigidity for smooth and stable cutting
- Interchangeable between standard and dual face contact spindles
- 53% more surface area contact than just the taper alone



TAPER PLUS - BT30

Part Number	Collet Series	Clamping Range	Wrench	d	L (mm)	L	L1	D	Max. RPM
NBT30-C3/4-70	KM3/4 or CCK3/4	0.125-0.750"	9HC22	0.75"	70	2.76"	3.15"	2.03"	12K
NBT30-C3/4-75	KM3/4 or CCK3/4	0.125-0.750"	9HC22	0.75"	75	2.95"	3.15"	2.03"	12K
NBT30-C1-75	KM1 or CCK1	0.125-1.000"	9HC25	1.00"	75	2.95"	2.68"	2.17"	8K

Note: "N" denotes Taper Plus dual face contact.



TAPER PLUS - BT40

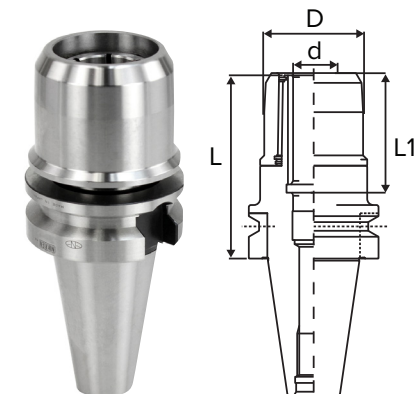
Part Number	Collet Series	Clamping Range	Wrench	d	L (mm)	L	L1	D	Max. RPM
NBT40-C3/4-70	KM3/4 or CCK3/4	0.125-0.750"	9HC22	0.75"	70	2.76"	3.15"	2.03"	8K
NBT40-C1-70	KM1 or CCK1	0.125-1.000"	9HC25	1.00"	70	2.76"	3.15"	2.34"	8K
NBT40-C1-90	KM1 or CCK1	0.125-1.000"	9HC25	1.00"	90	3.54"	3.15"	2.34"	8K
NBT40-C1.1/4-85	KM1.1/4 or CCK1.1/4	0.187-1.250"	9HC32	1.25"	85	3.35"	3.03"	2.72"	8K

Note: "N" denotes Taper Plus dual face contact.

TAPER PLUS - BT30 HIGH SPEED

Part Number	Collet Series	Clamping Range	High-Speed Spanner Wrench	d	L (mm)	L	L1	D	Max. RPM
NBT30-C3/4-75G	KM3/4 or CCK3/4	0.125-0.750"	GH20	0.75"	75	2.95"	3.15"	1.89"	30K
NBT30-C1-75G	KM1 or CCK1	0.125-1.000"	GH25	1.00"	75	2.95"	2.68"	2.15"	25K

Note: "N" denotes Taper Plus dual face contact.



TAPER PLUS - BT40 HIGH SPEED

Part Number	Collet Series	Clamping Range	High-Speed Spanner Wrench	d	L (mm)	L	L1	D	Max. RPM
NBT40-C3/4-70G	KM3/4 or CCK3/4	0.125-0.750"	GH20	0.75"	70	2.76"	3.15"	1.89"	25K
NBT40-C3/4-105G	KM3/4 or CCK3/4	0.125-0.750"	GH20	0.75"	105	4.13"	3.15"	1.89"	20K
NBT40-C1-70G	KM1 or CCK1	0.125-1.000"	GH25	1.00"	70	2.76"	3.15"	2.15"	20K
NBT40-C1-90G	KM1 or CCK1	0.125-1.000"	GH25	1.00"	90	3.54"	3.15"	2.15"	20K
NBT40-C1.1/4-85G	KM1.1/4 or CCK1.1/4	0.187-1.250"	GH32	1.25"	85	3.35"	3.03"	2.68"	20K
NBT40-C1.1/4-120G	KM1.1/4 or CCK1.1/4	0.187-1.250"	GH32	1.25"	120	4.72"	3.19"	2.68"	20K

Note: "N" denotes Taper Plus dual face contact.



KM & NK Collets
Pages 151-152



Spanner Wrench
Page 155



Back-Up Screw
Page 155



Coolant-Thru & Slotted Nuts
Page 153-154

MILLING CHUCKS

HSK MILLING CHUCKS

FEATURES

- Nikken patented design
- Nut body contact, nose clamping and anti-vibration mechanism
- Thick body and internal slots provide extremely strong chucking torque and rigidity
- Quiet and stable heavy milling
- 140% more bearing surface than competitors' milling chucks



T.I.R.
<0.0002" at 3xD



Speed
Up to 20,000 rpm



Coolant-Thru
Thru-tool coolant

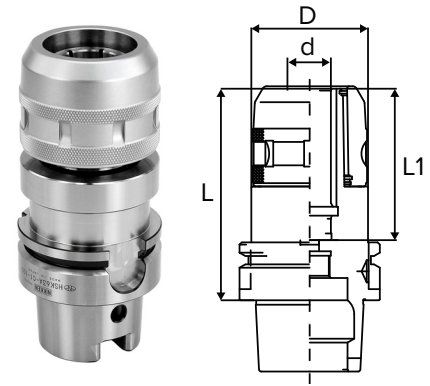


Please note that the maximum RPM listed in our catalog may vary depending on the toolholder shank, weight, balanceability and the G rating.

HSK63A

Part Number	Collet Series	Clamping Range	Wrench	d	L (mm)	L	L1	D	Max. RPM
HSK63A-C3/4-95-IDU	KM3/4 or CCK3/4	0.125-0.750"	9HC22	0.75"	95	3.74"	2.68"	2.03"	10K
HSK63A-C3/4-110-IDU	KM3/4 or CCK3/4	0.125-0.750"	9HC22	0.75"	110	4.33"	3.15"	2.03"	10K
HSK63A-C1-100-IDU	KM1 or CCK1	0.125-1.000"	9HC25	1.00"	100	3.94"	2.97"	2.34"	10K
HSK63A-C1-130	KM1 or CCK1	0.125-1.000"	9HC25	1.00"	130	5.12"	3.20"	2.34"	6K
HSK63A-C1.1/4-110-IDU	KM1.1/4 or CCK1.1/4	0.187-1.250"	9HC32	1.25"	110	4.33"	3.27"	2.72"	8K
HSK63A-C1.1/4-130	KM1.1/4 or CCK1.1/4	0.187-1.250"	9HC32	1.25"	130	5.12"	3.19"	2.72"	8K

Note: Wrench, coolant tube and coolant tube wrench not included. Please see page 155 for more details.

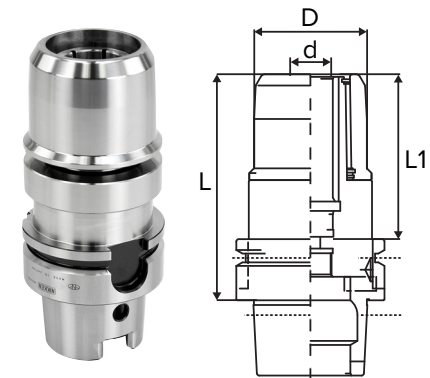


HSK63A HIGH SPEED

Part Number	Collet Series	Clamping Range	High-Speed Spanner Wrench	d	L (mm)	L	L1	D	Max. RPM
HSK63A-C3/4-70P	KM3/4 or CCK3/4	0.125-0.750"	9HC22	0.75"	70	2.76"	2.05"	2.03"	20K
HSK63A-C3/4-95G-IDU	KM3/4 or CCK3/4	0.125-0.750"	GH20	0.75"	95	3.74"	2.68"	1.89"	20K
HSK63A-C3/4-110G-IDU	KM3/4 or CCK3/4	0.125-0.750"	GH20	0.75"	110	4.33"	3.15"	1.89"	20K
HSK63A-C1-100G-IDU	KM1 or CCK1	0.125-1.000"	GH25	1.00"	100	3.94"	2.97"	2.15"	20K
HSK63A-C1-130G	KM1 or CCK1	0.125-1.000"	GH25	1.00"	130	4.33"	3.15"	2.15"	20K
HSK63A-C1.1/4-110G-IDU	KM1.1/4 or CCK1.1/4	0.187-1.250"	GH32	1.25"	110	4.33"	3.27"	2.68"	15K

Note:

- High-speed spanner wrench, coolant tube and coolant tube wrench not included. Please see page 155 for more details.
- High-speed HSK63A Milling Chucks use special high-speed spanner wrenches.

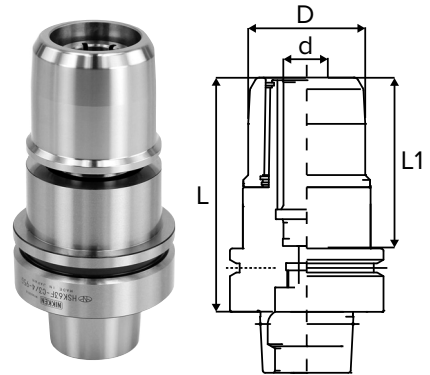


HSK63F HIGH SPEED

Part Number	Collet Series	Clamping Range	High-Speed Spanner Wrench	d	L (mm)	L	L1	D	Max. RPM
HSK63F-C3/4-95G	KM3/4 or CCK3/4	0.125-0.750"	GH20	0.75"	95	3.74"	2.68"	1.89"	25K
HSK63F-C1-100G	KM1 or CCK1	0.125-1.000"	GH25	1.00"	100	3.94"	2.97"	2.15"	20K
HSK63F-C1.1/4-110G	KM1.1/4 or CCK1.1/4	0.187-1.250"	GH32	1.25"	110	4.33"	3.27"	2.68"	15K

Note:

- High-speed spanner wrench, coolant tube, and coolant tube wrench not included. Please see page 155 for more details.
- High-speed HSK63F Milling Chucks use special high-speed spanner wrenches.



KM & NK Collets
Pages 151-152



Spanner Wrench
Page 155



Back-Up Screw
Page 155



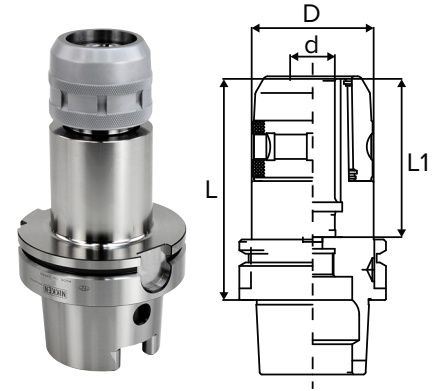
Coolant-Thru & Slotted Nuts
Page 153-154

HSK MILLING CHUCKS

HSK100A

Part Number	Collet Series	Clamping Range	Wrench	d	L (mm)	L	L1	D	Max. RPM
HSK100A-C3/4-115-IDU	KM3/4 or CCK3/4	0.125-0.750"	9HC22	0.75"	115	4.53"	3.15"	2.03"	8K
HSK100A-C3/4-135-IDU	KM3/4 or CCK3/4	0.125-0.750"	9HC22	0.75"	135	5.31"	3.15"	2.03"	8K
HSK100A-C1-115-IDU	KM1 or CCK1	0.125-1.000"	9HC25	1.00"	115	4.53"	3.15"	2.34"	8K
HSK100A-C1-135-IDU	KM1 or CCK1	0.125-1.000"	9HC25	1.00"	135	5.31"	3.15"	2.34"	8K
HSK100A-C1.1/4-115-IDU	KM1.1/4 or CCK1.1/4	0.187-1.250"	9HC32	1.25"	115	4.53"	3.27"	2.72"	8K
HSK100A-C1.1/4-165-IDU	KM1.1/4 or CCK1.1/4	0.187-1.250"	9HC32	1.25"	165	6.50"	3.19"	2.72"	8K
HSK100A-C32-115	KM32 or CCK32	6 - 32mm	9HC32	32mm	115	4.53"	3.27"	2.72"	8K
HSK100A-C32-135	KM32 or CCK32	6 - 32mm	9HC32	32mm	135	5.31"	3.19"	2.72"	6K
HSK100A-C32-165	KM32 or CCK32	6 - 32mm	9HC32	32mm	165	6.50"	3.19"	2.72"	6K
HSK100A-C32-250	KM32 or CCK32	6 - 32mm	9HC32	32mm	250	9.84"	3.19"	2.72"	2K
HSK100A-C32-300	KM32 or CCK32	6 - 32mm	9HC32	32mm	300	11.81"	3.19"	2.72"	2K

Note: Wrench, coolant tube, and coolant tube wrench not included.
Please see page 155 for more details.

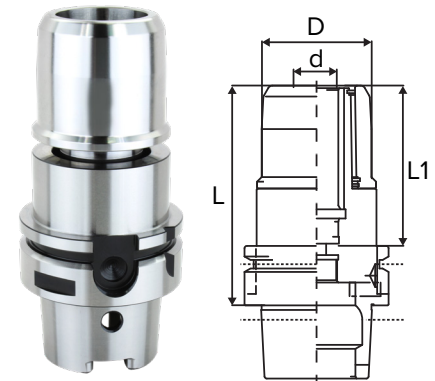


HSK100A HIGH SPEED

Part Number	Collet Series	Clamping Range	High-Speed Spanner Wrench	d	L (mm)	L	L1	D	Max. RPM
HSK100A-C3/4-115G-IDU	KM3/4 or CCK3/4	0.125-0.750"	GH20	0.75"	115	4.53"	3.15"	1.89"	20K
HSK100A-C3/4-135G-IDU	KM3/4 or CCK3/4	0.125-0.750"	GH20	0.75"	135	5.31"	3.15"	1.89"	20K

Note:

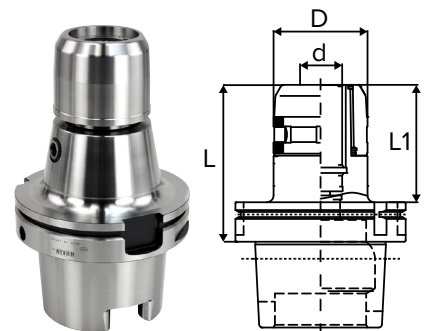
- High-speed spanner wrench, coolant tube, and coolant tube wrench not included. Please see page 155 for more details.
- High-speed HSK100A Milling Chucks use special high-speed spanner wrenches.



HSK125A

Part Number	Collet Series	Clamping Range	Wrench	d	L (mm)	L	L1	D	Max. RPM
HSK125A-C1-115	KM1 or CCK1	0.125-1.000"	9HC25	1.00"	115	4.53"	3.03"	2.34"	8K
HSK125A-C1.1/4-115	KM1.1/4 or CCK1.1/4	0.187-1.250"	9HC32	1.25"	115	4.53"	3.07"	2.72"	8K
HSK125A-C2-125	KM2 or CCK2	1.000-2.000"	9HC50	2.00"	125	4.92"	3.46"	4.13"	3K

Note: Wrench, coolant tube, and coolant tube wrench not included.
Please see page 155 for more details.



KM & NK Collets
Pages 151-152



Spanner Wrench
Page 155



Back-Up Screw
Page 155



Coolant-Thru & Slotted Nuts
Page 153-154

MILLING CHUCKS

NMTB MILLING CHUCKS

FEATURES

- Nikken patented design
- Nut body contact, nose clamping and anti-vibration mechanism
- Thick body and internal slots provide extremely strong chucking torque and rigidity
- Quiet and stable heavy milling
- 140% more bearing surface than competitors' milling chucks



T.I.R.
<0.0002" at 3xD



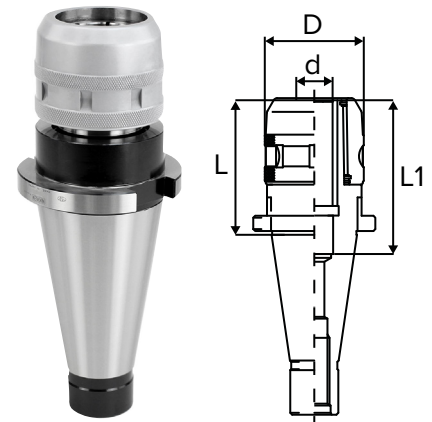
Coolant-Thru
Thru-tool coolant



NMTB40

Part Number	Collet Series	Clamping Range	Wrench	d	L (mm)	L	L1	D	Max. RPM
NMTB40-C3/4-70	KM3/4 or CCK3/4	0.125-0.750"	9HC22	0.75"	70	2.76"	3.15"	2.03"	6K
NMTB40-C1.1/4-105	KM1.1/4 or CCK1.1/4	0.187-1.250"	9HC32	1.25"	105	4.13"	3.15"	2.72"	6K

Note: Wrench not included.



NMTB50

Part Number	Collet Series	Clamping Range	Wrench	d	L (mm)	L	L1	D	Max. RPM
NMTB50-C3/4-65	KM3/4 or CCK3/4	0.125-0.750"	9HC22	0.75"	65	2.56"	3.15"	2.03"	6K
NMTB50-C1.1/4-90	KM1.1/4 or CCK1.1/4	0.187-1.250"	9HC32	1.25"	90	3.54"	4.13"	2.72"	6K
NMTB50-C2-105	KM2 or CCK2	1.000-2.000"	9HC50	2.00"	105	4.13"	3.54"	4.13"	6K

Note:

- Wrench not included.
- All NMTB shanks are suitable for use with Erickson Quick Change spindles.



KM & NK Collets
Pages 151-152



Spanner Wrench
Page 155



Back-Up Screw
Page 155



Coolant-Thru & Slotted Nuts
Page 153-154

POLYGONAL TAPER MILLING CHUCKS

FEATURES

- Extremely stable and rigid connection between tool and the machine
- High torque and bending forces transmission due to simultaneous tapered polygon and face contact with machine spindle
- Self centering ability due to unique design
- Internal coolant supply, directly to the tool tip
- Best solution for all processes - both in turning and milling
- Modular design for flexible tooling
- Standardized interface as per ISO 26623



T.I.R.
≤0.0001" run out at cavity bore



Speed
Up to 25,000 rpm



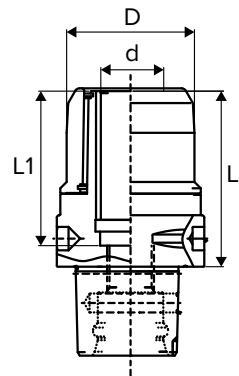
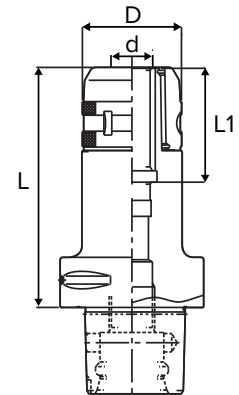
Coolant-Thru
Thru-tool coolant



Please note that the maximum RPM listed in our catalog may vary depending on the toolholder shank, weight, balanceability and the G rating.

C6/C8

Part Number	Collet Series	Clamping Range	Wrench	d	L (mm)	L	L1	D	Max. RPM
C6-C3/4-75-IDU	KM3/4 or CCK3/4	0.125-0.750"	9HC22	0.75"	75	2.95"	2.60"	2.03"	8K
C6-C3/4-90-IDU	KM3/4 or CCK3/4	0.125-0.750"	9HC22	0.75"	90	3.54"	3.15"	2.03"	8K
C6-C3/4-120-IDU	KM3/4 or CCK3/4	0.125-0.750"	9HC22	0.75"	120	4.72"	3.15"	2.03"	8K
C6-C1-75-IDU	KM1 or CCK1	0.125-1.000"	9HC25	1.00"	75	2.95"	2.41"	2.34"	8K
C6-C1-90-IDU	KM1 or CCK1	0.125-1.000"	9HC25	1.00"	90	3.54"	3.15"	2.34"	8K
C6-C1-120-IDU	KM1 or CCK1	0.125-1.000"	9HC25	1.00"	120	4.72"	3.15"	2.34"	8K
C6-C1.1/4-75-IDU	KM1.1/4 or CCK1.1/4	0.187-1.250"	9HC32	1.25"	75	2.95"	3.19"	2.72"	8K
C6-C1.1/4-120-IDU	KM1.1/4 or CCK1.1/4	0.187-1.250"	9HC32	1.25"	120	4.72"	3.19"	2.72"	8K
C8-C3/4-90-IDU	KM3/4 or CCK3/4	0.125-0.750"	9HC22	0.75"	90	3.54"	3.15"	2.03"	8K
C8-C3/4-105-IDU	KM3/4 or CCK3/4	0.125-0.750"	9HC22	0.75"	105	4.13"	3.15"	2.03"	8K
C8-C3/4-135-IDU	KM3/4 or CCK3/4	0.125-0.750"	9HC22	0.75"	135	5.31"	3.15"	2.03"	6K
C8-C3/4-165-IDU	KM3/4 or CCK3/4	0.125-0.750"	9HC22	0.75"	165	6.50"	3.15"	2.03"	6K
C8-C1-90-IDU	KM1 or CCK1	0.125-1.000"	9HC25	1.00"	90	3.54"	3.15"	2.34"	8K
C8-C1-105-IDU	KM1 or CCK1	0.125-1.000"	9HC25	1.00"	105	4.13"	3.15"	2.34"	8K
C8-C1-135-IDU	KM1 or CCK1	0.125-1.000"	9HC25	1.00"	135	5.31"	3.15"	2.34"	6K
C8-C1-165-IDU	KM1 or CCK1	0.125-1.000"	9HC25	1.00"	165	6.50"	3.15"	2.34"	6K
C8-C1.1/4-90-IDU	KM1.1/4 or CCK1.1/4	0.187-1.250"	9HC32	1.25"	90	3.54"	3.35"	2.72"	8K
C8-C1.1/4-105-IDU	KM1.1/4 or CCK1.1/4	0.187-1.250"	9HC32	1.25"	105	4.13"	3.94"	2.72"	8K
C8-C1.1/4-135-IDU	KM1.1/4 or CCK1.1/4	0.187-1.250"	9HC32	1.25"	135	5.31"	4.13"	2.72"	6K
C8-C1.1/4-165-IDU	KM1.1/4 or CCK1.1/4	0.187-1.250"	9HC32	1.25"	165	6.50"	4.13"	2.72"	6K



C6 HIGH SPEED

Part Number	Collet Series	Clamping Range	Wrench	d	L (mm)	L	L1	D	Max. RPM
C6-C3/4-75G-IDU	KM3/4 or CCK3/4	0.125-0.750"	GH20	0.75"	75	2.95"	2.60"	1.89"	25K
C6-C1-75G-IDU	KM1 or CCK1	0.125-1.000"	GH25	1.00"	75	2.95"	2.60"	2.15"	20K
C6-C1.1/4-75G-IDU	KM1.1/4 or CCK1.1/4	0.187-1.250"	GH32	1.25"	75	2.95"	2.60"	2.68"	15K



Contact us to request a quote on supplying High Speed Polyagonal Taper Milling Chucks in any size from our factory.

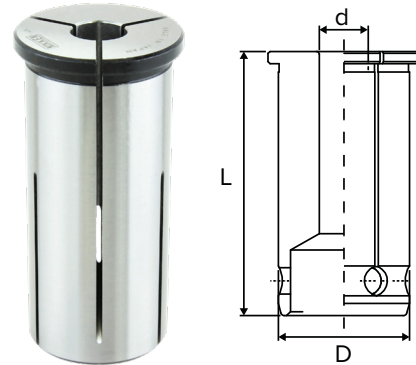
MILLING CHUCKS

KM COLLETS

Milling chuck collets are designed to ensure uniform fit around the cutting tool shank. This provides maximum gripping power as well as concentric positioning of the cutting tool.

Collet Series	L	D	d = Collet Range
KM3/4	2.087"	0.750"	1/8" - 5/8"
KM1	2.323"	1.000"	1/8" - 7/8"
KM1.1/4	2.539"	1.250"	3/16" - 1"
KM32mm	2.539"	1.259"	3/16" - 1"
KM2	3.268"	2.000"	1" - 1.1/2"

Note: KM Collets only collapse .001". For optimal performance, please use on-size cutting tools.



Collet Series	Inch		Metric	
	Size	Part Number	Size	Part Number
3/4"	1/8"	KM3/4-1/8	6mm	KM3/4-6
	3/16"	KM3/4-3/16	7mm	KM3/4-7
	1/4"	KM3/4-1/4	8mm	KM3/4-8
	5/16"	KM3/4-5/16	10mm	KM3/4-10
	3/8"	KM3/4-3/8	12mm	KM3/4-12
	7/16"	KM3/4-7/16	14mm	KM3/4-14
	1/2"	KM3/4-1/2	16mm	KM3/4-16
	9/16"	KM3/4-9/16	-	-
	5/8"	KM3/4-5/8	-	-
1"	1/8"	KM1-1/8	6mm	KM1-6
	3/16"	KM1-3/16	8mm	KM1-8
	1/4"	KM1-1/4	10mm	KM1-10
	5/16"	KM1-5/16	12mm	KM1-12
	3/8"	KM1-3/8	14mm	KM1-14
	7/16"	KM1-7/16	16mm	KM1-16
	1/2"	KM1-1/2	18mm	KM1-18
	9/16"	KM1-9/16	20mm	KM1-20
	5/8"	KM1-5/8	-	-
	3/4"	KM1-3/4	-	-
1.1/4"	7/8"	KM1-7/8	-	-
	1/8"	KM1.1/4-1/8	6mm	KM1.1/4-6
	3/16"	KM1.1/4-3/16	8mm	KM1.1/4-8
	1/4"	KM1.1/4-1/4	10mm	KM1.1/4-10
	5/16"	KM1.1/4-5/16	12mm	KM1.1/4-12
	3/8"	KM1.1/4-3/8	14mm	KM1.1/4-14
	7/16"	KM1.1/4-7/16	16mm	KM1.1/4-16
	1/2"	KM1.1/4-1/2	18mm	KM1.1/4-18
	9/16"	KM1.1/4-9/16	20mm	KM1.1/4-20
	5/8"	KM1.1/4-5/8	25mm	KM1.1/4-25
	11/16"	KM1.1/4-11/16	-	-
	3/4"	KM1.1/4-3/4	-	-
	7/8"	KM1.1/4-7/8	-	-
	15/16"	KM1.1/4-15/16	-	-
	1/4"	KM2-1/4	-	-
	3/4"	KM2-3/4	-	-
	2"	1"	KM2-1	-
1-1/4"		KM2-1.1/4	-	-
1-1/2"		KM2-1.1/2	-	-
1-3/4"		KM2-1.3/4	-	-
1-7/8"		KM2-1.7/8	-	-

Collet Series	Inch		Metric	
	Size	Part Number	Size	Part Number
32mm	1/8"	KM32-1/8	3mm	KM32-3
	3/16"	KM32-3/16	4mm	KM32-4
	1/4"	KM32-1/4	5mm	KM32-5
	5/16"	KM32-5/16	6mm	KM32-6
	3/8"	KM32-3/8	7mm	KM32-7
	7/16"	KM32-7/16	8mm	KM32-8
	1/2"	KM32-1/2	9mm	KM32-9
	9/16"	KM32-9/16	10mm	KM32-10
	5/8"	KM32-5/8	11mm	KM32-11
	11/16"	KM32-11/16	12mm	KM32-12
	3/4"	KM32-3/4	13mm	KM32-13
	7/8"	KM32-7/8	14mm	KM32-14
	1"	KM32-1	15mm	KM32-15
	-	-	16mm	KM32-16
	-	-	17mm	KM32-17
	-	-	18mm	KM32-18
	-	-	19mm	KM32-19
	-	-	20mm	KM32-20
	-	-	21mm	KM32-21
	-	-	22mm	KM32-22
	-	-	23mm	KM32-23
	-	-	24mm	KM32-24
	-	-	25mm	KM32-25
	-	-	26mm	KM32-26
	-	-	27mm	KM32-27
	-	-	28mm	KM32-28
	-	-	29mm	KM32-29
	-	-	30mm	KM32-30

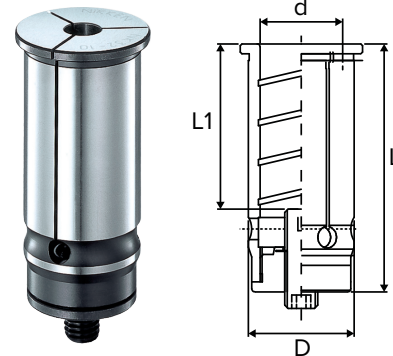
KM COLLET SET

Part Number	Description
KM3/4-SET-09	9 piece set 1/8" - 5/8"
KM3/4-SET-07-MM	7 piece set 6mm - 16mm
KM1-SET-10	10 piece set 1/8" - 7/8"
KM1-SET-08-MM	8 piece set 6mm - 20mm
KM1.1/4-SET-11	11 piece set 3/16" - 1"
KM1.1/4-SET-08-MM	8 piece set 6mm - 25mm
KM32-SET-11	11 piece set 3/16" - 1"
KM32-SET-09-MM	9 piece set 6mm - 26mm

NK COLLETS - DEPTH ADJUSTABLE

Collet Series	D	L	L1	d = Collet Range
NK3/4	0.750"	2.480"	1.968" max. depth	1/8" - 5/8"
NK1	1.000"	2.677"	2.165" max. depth	1/8" - 7/8"
NK1.1/4	1.250"	2.964"	2.401" max. depth	3/16" - 1"
NK32mm	1.259"	2.964"	2.401" max. depth	3/16" - 1"
NK2	2.000"	3.673"	3.110" max. depth	1" - 1.1/2"

Note: Cutter length adjustment on the collet is possible from front and back.



Collet Series	Inch		Metric	
	Size	Part Number	Size	Part Number
3/4"	1/8"	NK3/4-1/8	6mm	NK3/4-6
	3/16"	NK3/4-3/16	7mm	NK3/4-7
	1/4"	NK3/4-1/4	8mm	NK3/4-8
	5/16"	NK3/4-5/16	10mm	NK3/4-10
	3/8"	NK3/4-3/8	12mm	NK3/4-12
	7/16"	NK3/4-7/16	14mm	NK3/4-14
	1/2"	NK3/4-1/2	16mm	NK3/4-16
	9/16"	NK3/4-9/16	-	-
	5/8"	NK3/4-5/8	-	-
1"	1/8"	NK1-1/8	6mm	NK1-6
	3/16"	NK1-3/16	8mm	NK1-8
	1/4"	NK1-1/4	10mm	NK1-10
	5/16"	NK1-5/16	12mm	NK1-12
	3/8"	NK1-3/8	14mm	NK1-14
	7/16"	NK1-7/16	16mm	NK1-16
	1/2"	NK1-1/2	18mm	NK1-18
	5/8"	NK1-5/8	20mm	NK1-20
	3/4"	NK1-3/4	-	-
	7/8"	NK1-7/8	-	-
1.1/4"	3/16"	NK1.1/4-3/16	6mm	NK1.1/4-6
	1/4"	NK1.1/4-1/4	8mm	NK1.1/4-8
	5/16"	NK1.1/4-5/16	9mm	NK1.1/4-9
	3/8"	NK1.1/4-3/8	10mm	NK1.1/4-10
	7/16"	NK1.1/4-7/16	12mm	NK1.1/4-12
	1/2"	NK1.1/4-1/2	14mm	NK1.1/4-14
	9/16"	NK1.1/4-9/16	16mm	NK1.1/4-16
	5/8"	NK1.1/4-5/8	20mm	NK1.1/4-20
	3/4"	NK1.1/4-3/4	25mm	NK1.1/4-25
	7/8"	NK1.1/4-7/8	-	-
	15/16"	NK1.1/4-15/16	-	-

Collet Series	Inch		Metric	
	Size	Part Number	Size	Part Number
2"	1"	NK2-1	21mm	NK32-21
	1-1/4"	NK2-1-1/4	22mm	NK32-22
	1-1/2"	NK2-1-1/2	23mm	NK32-23
	-	-	24mm	NK32-24
	-	-	25mm	NK32-25
	-	-	26mm	NK32-26
32mm	3/16"	NK32-3/16	1mm	NK32-1
	1/4"	NK32-1/4	3mm	NK32-3
	5/16"	NK32-5/16	4mm	NK32-4
	3/8"	NK32-3/8	5mm	NK32-5
	7/16"	NK32-7/16	6mm	NK32-6
	1/2"	NK32-1/2	7mm	NK32-7
	9/16"	NK32-9/16	8mm	NK32-8
	5/8"	NK32-5/8	9mm	NK32-9
	11/16"	NK32-11/16	10mm	NK32-10
	3/4"	NK32-3/4	11mm	NK32-11
	13/16"	NK32-13/16	12mm	NK32-12
	7/8"	NK32-7/8	13mm	NK32-13
	15/16"	NK32-15/16	14mm	NK32-14
	1"	NK32-1	15mm	NK32-15
	-	-	16mm	NK32-16
	-	-	17mm	NK32-17
-	-	18mm	NK32-18	
-	-	19mm	NK32-19	
-	-	20mm	NK32-20	

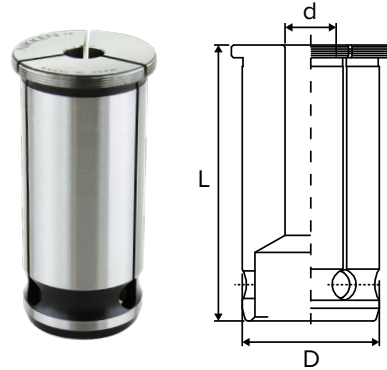
MILLING CHUCKS

CCK COOLANT COLLET SYSTEM



Collet Series	L	D	d = Collet Range
3/4"	2.086"	0.750"	1/8" - 5/8"
1"	2.320"	1.000"	1/8" - 7/8"
1.1/4"	2.539"	1.250"	3/16" - 1"
32mm	2.539"	1.259"	3/16" - 1"
2"	3.268"	2.000"	1" - 1.1/2"

Note: CCK Collets do not collapse.



Collet Series	Size	Coolant Collet	Coolant-Thru Nut	Slotted Nut	Disc Wrench
3/4"	1/8"	CCK3/4-1/8	CKFN20(3/4)-1/8C	CKFN20(3/4)-1/8	CCKL20
	3/16"	CCK3/4-3/16	CKFN20(3/4)-3/16C	CKFN20(3/4)-3/16	
	1/4"	CCK3/4-1/4	CKFN20(3/4)-1/4C	CKFN20(3/4)-1/4	
	5/16"	CCK3/4-5/16	CKFN20(3/4)-5/16C	CKFN20(3/4)-5/16	
	3/8"	CCK3/4-3/8	CKFN20(3/4)-3/8C	CKFN20(3/4)-3/8	
	7/16"	CCK3/4-7/16	CKFN20(3/4)-7/16C	CKFN20(3/4)-7/16	
	1/2"	CCK3/4-1/2	CKFN20(3/4)-1/2C	CKFN20(3/4)-1/2	
	9/16"	CCK3/4-9/16	CKFN20(3/4)-9/16C	CKFN20(3/4)-9/16	
	5/8"	CCK3/4-5/8	CKFN20(3/4)-5/8C	CKFN20(3/4)-5/8	
	3/4"	-	CKFN20(3/4)-3/4D	-	
	3/4"	-	CKFN20(3/4)-3/4DC	-	
	6mm	CCK3/4-6	CKFN20(3/4)-6C	CKFN20(3/4)-6	
	7mm	CCK3/4-7	CKFN20(3/4)-7C	CKFN20(3/4)-7	
	8mm	CCK3/4-8	CKFN20(3/4)-8C	CKFN20(3/4)-8	
	10mm	CCK3/4-10	CKFN20(3/4)-10C	CKFN20(3/4)-10	
	12mm	CCK3/4-12	CKFN20(3/4)-12C	CKFN20(3/4)-12	
	14mm	CCK3/4-14	CKFN20(3/4)-14C	CKFN20(3/4)-14	
	16mm	CCK3/4-16	CKFN20(3/4)-16C	CKFN20(3/4)-16	
	20mm	-	CKFN20(3/4)-20DC	-	
1"	1/8"	CCK1-1/8	CKFN25(1)-1/8C	CKFN25(1)-1/8	CCKL25
	3/16"	CCK1-3/16	CKFN25(1)-3/16C	CKFN25(1)-3/16	
	1/4"	CCK1-1/4	CKFN25(1)-1/4C	CKFN25(1)-1/4	
	5/16"	CCK1-5/16	CKFN25(1)-5/16C	CKFN25(1)-5/16	
	3/8"	CCK1-3/8	CKFN25(1)-3/8C	CKFN25(1)-3/8	
	7/16"	CCK1-7/16	CKFN25(1)-7/16C	CKFN25(1)-7/16	
	1/2"	CCK1-1/2	CKFN25(1)-1/2C	CKFN25(1)-1/2	
	9/16"	CCK1-9/16	CKFN25(1)-9/16C	CKFN25(1)-9/16	
	5/8"	CCK1-5/8	CKFN25(1)-5/8C	CKFN25(1)-5/8	
	3/4"	CCK1-3/4	CKFN25(1)-3/4C	CKFN25(1)-3/4	
	7/8"	CCK1-7/8	CKFN25(1)-7/8C	CKFN25(1)-7/8	
	1"	-	CKFN25(1)-1D	-	
	1"	-	CKFN25(1)-1DC	-	
	6mm	CCK1-6	CKFN25(1)-6C	CKFN25(1)-6	
	8mm	CCK1-8	CKFN25(1)-8C	CKFN25(1)-8	
	10mm	CCK1-10	CKFN25(1)-10C	CKFN25(1)-10	
	12mm	CCK1-12	CKFN25(1)-12C	CKFN25(1)-12	
	14mm	CCK1-14	CKFN25(1)-14C	CKFN25(1)-14	
	16mm	CCK1-16	CKFN25(1)-16C	CKFN25(1)-16	
	18mm	CCK1-18	CKFN25(1)-18C	CKFN25(1)-18	
	20mm	CCK1-20	CKFN25(1)-20C	CKFN25(1)-20	
	25mm	-	CKFN25(1)-25D	-	
	25mm	-	CKFN25(1)-25DC	-	

CCK COOLANT COLLET SYSTEM (CONT.)



Collet Series	Size	Coolant Collet	Coolant-Thru Nut	Slotted Nut	Disc Wrench
1.1/4"	3/16"	CCK1.1/4-3/16	CKFN32(1.1/4)-3/16C	CKFN32(1.1/4)-3/16	CCKL32
	1/4"	CCK1.1/4-1/4	CKFN32(1.1/4)-1/4C	CKFN32(1.1/4)-1/4	
	5/16"	CCK1.1/4-5/16	CKFN32(1.1/4)-5/16C	CKFN32(1.1/4)-5/16	
	3/8"	CCK1.1/4-3/8	CKFN32(1.1/4)-3/8C	CKFN32(1.1/4)-3/8	
	7/16"	CCK1.1/4-7/16	CKFN32(1.1/4)-7/16C	CKFN32(1.1/4)-7/16	
	1/2"	CCK1.1/4-1/2	CKFN32(1.1/4)-1/2C	CKFN32(1.1/4)-1/2	
	9/16"	CCK1.1/4-9/16	CKFN32(1.1/4)-9/16C	CKFN32(1.1/4)-9/16	
	5/8"	CCK1.1/4-5/8	CKFN32(1.1/4)-5/8C	CKFN32(1.1/4)-5/8	
	3/4"	CCK1.1/4-3/4	CKFN32(1.1/4)-3/4C	CKFN32(1.1/4)-3/4	
	7/8"	CCK1.1/4-7/8	CKFN32(1.1/4)-7/8C	CKFN32(1.1/4)-7/8	
	1"	CCK1.1/4-1	CKFN32(1.1/4)-1C	CKFN32(1.1/4)-1	
	1-1/4"	-	CKFN32(1.1/4)-1.1/4D	-	
	1-1/4"	-	CKFN32(1.1/4)-1.1/4DC	-	
	6mm	CCK1.1/4-6	CKFN32(1.1/4)-6C	CKFN32(1.1/4)-6	
	8mm	CCK1.1/4-8	CKFN32(1.1/4)-8C	CKFN32(1.1/4)-8	
	10mm	CCK1.1/4-10	CKFN32(1.1/4)-10C	CKFN32(1.1/4)-10	
	12mm	CCK1.1/4-12	CKFN32(1.1/4)-12C	CKFN32(1.1/4)-12	
	14mm	CCK1.1/4-14	CKFN32(1.1/4)-14C	CKFN32(1.1/4)-14	
	16mm	CCK1.1/4-16	CKFN32(1.1/4)-16C	CKFN32(1.1/4)-16	
	20mm	CCK1.1/4-20	CKFN32(1.1/4)-20C	CKFN32(1.1/4)-20	
25mm	CCK1.1/4-25	CKFN32(1.1/4)-25C	CKFN32(1.1/4)-25		
2"	32mm	-	CKFN32(1.1/4)-32D	-	
	32mm	-	CKFN32(1.1/4)-32DC	-	
	1"	CCK2-1	CKFN50(2)-1C	CKFN50(2)-1	CCKL50
	1-1/4"	CCK2-1.1/4	CKFN50(2)-1.1/4C	CKFN50(2)-1.1/4	
1-1/2"	CCK2-1.1/2	CKFN50(2)-1.1/2C	CKFN50(2)-1.1/2		
32mm	3/16"	CCK32-3/16	CKFN32(1.1/4)-3/16C	CKFN32(1.1/4)-3/16	CCKL32
	1/4"	CCK32-1/4	CKFN32(1.1/4)-1/4C	CKFN32(1.1/4)-1/4	
	5/16"	CCK32-5/16	CKFN32(1.1/4)-5/16C	CKFN32(1.1/4)-5/16	
	3/8"	CCK32-3/8	CKFN32(1.1/4)-3/8C	CKFN32(1.1/4)-3/8	
	7/16"	CCK32-7/16	CKFN32(1.1/4)-7/16C	CKFN32(1.1/4)-7/16	
	1/2"	CCK32-1/2	CKFN32(1.1/4)-1/2C	CKFN32(1.1/4)-1/2	
	9/16"	CCK32-9/16	CKFN32(1.1/4)-9/16C	CKFN32(1.1/4)-9/16	
	5/8"	CCK32-5/8	CKFN32(1.1/4)-5/8C	CKFN32(1.1/4)-5/8	
	3/4"	CCK32-3/4	CKFN32(1.1/4)-3/4C	CKFN32(1.1/4)-3/4	
	7/8"	CCK32-7/8	CKFN32(1.1/4)-7/8C	CKFN32(1.1/4)-7/8	
	1"	CCK32-1	CKFN32(1.1/4)-1C	CKFN32(1.1/4)-1	
	1-1/4"	-	CKFN32(1.1/4)-1.1/4D	-	
	1-1/4"	-	CKFN32(1.1/4)-1.1/4DC	-	
	6mm	CCK32-6	CKFN32(1.1/4)-6C	CKFN32(1.1/4)-6	
	8mm	CCK32-8	CKFN32(1.1/4)-8C	CKFN32(1.1/4)-8	
	10mm	CCK32-10	CKFN32(1.1/4)-10C	CKFN32(1.1/4)-10	
	11mm	CCK32-11	CKFN32(1.1/4)-11C	CKFN32(1.1/4)-11	
	12mm	CCK32-12	CKFN32(1.1/4)-12C	CKFN32(1.1/4)-12	
	14mm	CCK32-14	CKFN32(1.1/4)-14C	CKFN32(1.1/4)-14	
	15mm	CCK32-15	CKFN32(1.1/4)-15C	CKFN32(1.1/4)-15	
	16mm	CCK32-16	CKFN32(1.1/4)-16C	CKFN32(1.1/4)-16	
	18mm	CCK32-18	CKFN32(1.1/4)-18C	CKFN32(1.1/4)-18	
	20mm	CCK32-20	CKFN32(1.1/4)-20C	CKFN32(1.1/4)-20	
	24mm	CCK32-24	CKFN32(1.1/4)-24C	CKFN32(1.1/4)-24	
28mm	CCK32-28	CKFN32(1.1/4)-28C	CKFN32(1.1/4)-28		
32mm	-	CKFN32(1.1/4)-32D	-		
32mm	-	CKFN32(1.1/4)-32DC	-		

MILLING CHUCKS

MILLING CHUCK ACCESSORIES

WRENCH

Standard Style Part Number	High Speed Style Part Number	Use With
9HC22	GH20	3/4" Milling Chuck
9HC25	GH25	1" Milling Chuck
9HC32	GH32 GH32S	1.1/4" and 32mm Milling Chuck - OD = 68mm 1.1/4" and 32mm Milling Chuck - OD = 62-64mm
9HC50	-	2" Milling Chuck
9HC50	-	2" Milling Chuck



Standard Wrench



High-Speed Wrench

BACK-UP SCREW

Coolant-Thru	Use With
750TL-3(C)	3/4" Milling Chuck
1000TL-3(C)	1" Milling Chuck
1250TL-2(C)	1.1/4" Milling Chuck with ID depth of 77mm or less
1250TL-3(C)	1.1/4" Milling Chuck with ID depth of 105mm or more

Note: All back-up screws are 1000 PSI capable.



COOLANT TUBE FOR HSK HOLDERS

Part Number	Description
HSK63-TUBE	Coolant Tube for HSK63 Holders
HSK100-TUBE	Coolant Tube for HSK100 Holders
HSK125A-TUBE	Coolant Tube for HSK125A Holders
C6-TUBE	Coolant Tube for C6 Holders
C8-TUBE	Coolant Tube for C8 Holders



COOLANT TUBE WRENCH FOR HSK HOLDERS

Coolant tube wrenches are needed to remove or install coolant tubes in HSK toolholders.

Part Number	Description
HSK63-WRENCH	Wrench for HSK63 Coolant Tube
HSK100-WRENCH	Wrench for HSK100 Coolant Tube
HSK125-WRENCH	Wrench for HSK125 Coolant Tube
C6-WRENCH	Wrench for C6 Coolant Tube
C8-WRENCH	Wrench for C8 Coolant Tube



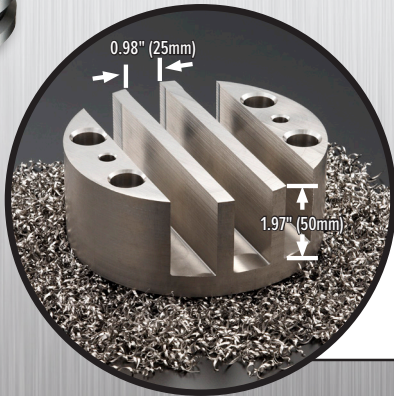
NIKKEN



X-TREME MILLING CHUCK

EXCELLENT RUNOUT AND POWERFUL GRIPPING

Exclusively developed for demanding applications and materials associated with the Aerospace and Energy industries.



Material: Ti6Al4V Titanium
0.98", 6 teeth Carbide Roughing End Mill
0.98" x 1.97" 1-Path Milling
No Pull-Out



847-367-4800 | sales@lyndexnikken.com
lyndexnikken.com

Connect With Us!

