

# END MILL HOLDERS



END MILL HOLDERS

## END MILL HOLDERS



## END MILL HOLDER FEATURES



### Extreme Rigidity

Featuring the highest taper contact and high quality steel, our End Mill Holders provide extreme rigidity for even the heaviest machining applications.

Shank style available from stock: CAT, BT, HSK, NMTB, and Straight, with inch or metric bores. High rigidity, stubby style, extended lengths and Aerospace whistle notch End Mill Holders can be supplied upon request.

ARE YOU LOOKING FOR A BETTER  
WAY TO HOLD END MILLS WITHOUT  
SACRIFICING ACCURACY?  
**USE A MILLING CHUCK!**



### WHAT MAKES OUR NIKKEN MILLING CHUCK THE BEST CHOICE FOR ANY MILLING APPLICATION?

- The most powerful collet chuck in the world with strongest grip in the world—up to 3,500 ft-lbs.!
- Symmetrical design—pre-balanced body and nut allow the milling chuck to operate beyond 20,000 RPM
- Outside bearing nut mechanically induces tight taper of the milling chuck to evenly collapse onto the cutting shank for high precision T.I.R.
- 6 angled coolant slots are standard, providing high pressure and high volume of coolant directed toward the periphery of the cutting tool

For more information on our Milling Chucks line, [go to page 133.](#)

# END MILL HOLDERS



## CAT END MILL HOLDERS

### FEATURES

- End mill ID bore T.I.R. < 0.0002"
- Through-spindle coolant capability
- AT3 or better taper



**T.I.R.**  
< 0.0002" in ID bore



**Coolant-Thru**



**Speed**  
Up to 25,000 RPM @ G2.5



Please note that the maximum RPM listed in our catalog may vary depending on the toolholder shank, weight, balanceability and the G rating.

### CAT40 - INCH

Part Number	Ød	L	L1	L2	L3	D	D1	Set Screw Part Number	Max. RPM	Fig.
C4006-0125-1.38	1/8"	1.38"	0.63"	-	-	0.75"	-	S6-32X1/4	25K	1
C4006-0125-2.36	1/8"	2.36"	0.98"	1.38"	-	0.75"	1.75"	S6-32X1/4	25K	2
C4006-0125-4.00	1/8"	4.00"	2.62"	1.38"	-	0.75"	1.75"	S6-32X1/4	25K	2
C4006-0187-1.38	3/16"	1.38"	0.63"	-	-	0.75"	-	S8-32X1/4	25K	1
C4006-0187-2.50	3/16"	2.50"	1.12"	1.38"	-	0.75"	1.75"	S8-32X1/4	25K	2
C4006-0187-4.00	3/16"	4.00"	2.62"	1.38"	-	0.75"	1.75"	S8-32X1/4	25K	2
C4006-0250-1.38	1/4"	1.38"	0.63"	-	-	0.79"	-	S1/4-28X1/4	25K	1
C4006-0250-2.50	1/4"	2.50"	1.12"	1.38"	-	0.79"	1.75"	S1/4-28X1/4	25K	2
C4006-0250-4.00	1/4"	4.00"	2.62"	1.38"	-	0.79"	1.75"	S1/4-28X1/4	25K	2
C4006-0250-9.00	1/4"	9.00"	1.70"	5.69"	1.61"	0.79"	1.75"	S1/4-28X1/4	25K	3
C4006-0312-2.50	5/16"	2.50"	1.12"	1.38"	-	0.87"	1.75"	S5/16-24X1/4	25K	2
C4006-0312-4.00	5/16"	4.00"	2.67"	1.33"	-	0.87"	1.75"	S5/16-24X1/4	25K	2
C4006-0375-1.38	3/8"	1.38"	0.63"	-	-	1.00"	-	S3/8-24X5/16	25K	1
C4006-0375-2.50	3/8"	2.50"	1.12"	1.38"	-	1.00"	1.75"	S3/8-24X5/16	25K	2
C4006-0375-4.00	3/8"	4.00"	2.62"	1.38"	-	1.00"	1.75"	S3/8-24X5/16	25K	2
C4006-0375-5.00	3/8"	5.00"	3.62"	1.38"	-	1.00"	1.75"	S3/8-24X5/16	25K	2
C4006-0375-9.00	3/8"	9.00"	1.70"	5.72"	1.59"	1.00"	1.75"	S3/8-24X5/16	25K	3
C4006-0437-2.50	7/16"	2.50"	1.12"	1.38"	-	1.38"	1.75"	S7/16-20X3/8	25K	2
C4006-0437-4.00	7/16"	4.00"	2.65"	1.54"	-	1.38"	1.75"	S7/16-20X3/8	25K	2
C4006-0500-1.75	1/2"	1.75"	1.00"	-	-	1.38"	-	S7/16-20X3/8	25K	1
C4006-0500-2.50	1/2"	2.50"	1.12"	1.38"	-	1.38"	1.75"	S7/16-20X3/8	25K	2
C4006-0500-4.00	1/2"	4.00"	2.62"	1.38"	-	1.38"	1.75"	S7/16-20X3/8	25K	2
C4006-0500-5.00	1/2"	5.00"	3.62"	1.38"	-	1.38"	1.75"	S7/16-20X3/8	25K	2
C4006-0500-9.00	1/2"	9.00"	1.70"	5.72"	1.59"	1.38"	1.75"	S7/16-20X3/8	25K	3
C4006-0625-1.75	5/8"	1.75"	1.29"	-	-	1.65"	-	S9/16-18X1/2	25K	1
C4006-0625-3.00	5/8"	3.00"	1.62"	1.38"	-	1.65"	1.75"	S9/16-18X1/2	25K	2
C4006-0625-4.00	5/8"	4.00"	2.60"	1.40"	-	1.65"	1.75"	S9/16-18X1/2	25K	2
C4006-0625-5.50	5/8"	5.50"	4.12"	1.38"	-	1.65"	1.75"	S9/16-18X1/2	25K	2

**Note:**

- Set Screws are included.
- Extended Length End Mill Holders can be modified with DIN flange coolant ports.



Available in **TAPER PLUS**<sup>+</sup>  
Dual-taper and flange contact

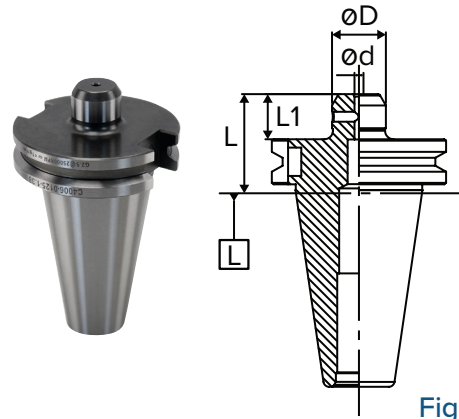


Fig. 1

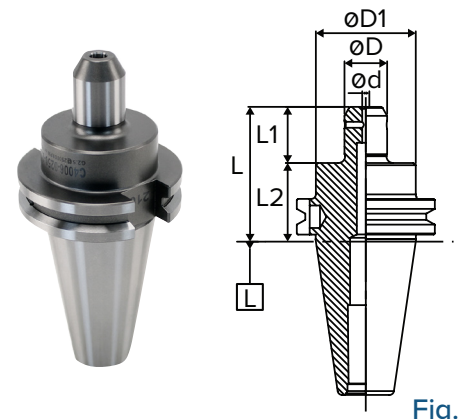


Fig. 2

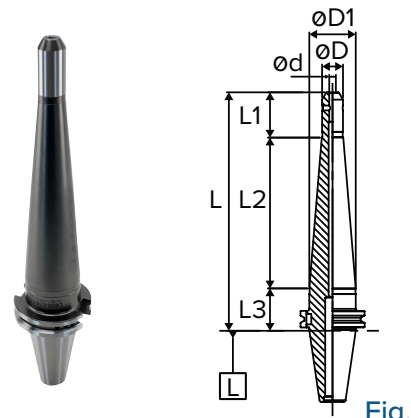


Fig. 3



Set Screws  
Page 173



Retention Knobs  
Page 267



Tool Clampers  
Page 274

## CAT END MILL HOLDERS

### CAT40 - INCH (CONT.)

Part Number	Ød	L	L1	L2	D	Set Screw Part Number	Max. RPM	Fig.
C4006-0750-1.75	3/4"	1.75"	1.00"	-	1.89"	S5/8-18X1/2	25K	1
C4006-0750-3.00	3/4"	3.00"	2.25"	-	1.75"	S5/8-18X1/2	25K	1
C4006-0750-4.00	3/4"	4.00"	3.25"	-	1.75"	S5/8-18X1/2	25K	1
C4006-0750-5.50	3/4"	5.50"	4.76"	-	1.75"	S5/8-18X1/2	25K	1
C4006-0750-9.00	3/4"	9.00"	8.25"	-	1.75"	S5/8-18X1/2	25K	1
C4006-0875-1.75	7/8"	1.75"	1.00"	-	1.94"	S5/8-18X1/2	25K	1
C4006-0875-3.50	7/8"	3.50"	2.12"	1.38"	2.00"	S5/8-18X1/2 (2)	25K	4
C4006-1000-2.00	1"	2.00"	1.25"	-	2.25"	S3/4-16X11/16	25K	1
C4006-1000-4.00	1"	4.00"	2.62"	1.38"	2.36"	S3/4-16X11/16 (2)	25K	4
C4006-1000-6.00	1"	6.00"	4.61"	1.39"	2.36"	S3/4-16X11/16 (2)	25K	4

Note:

- Set Screws are included.
- Extended Length End Mill Holders can be modified with DIN flange coolant ports.

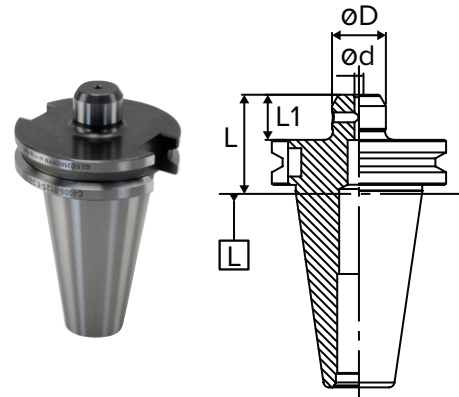


Fig. 1

### CAT40 - METRIC

Part Number	Ød	L	L1	L2	D	D1	Set Screw Part Number	Max. RPM	Fig.
C4006-6-2.50	6mm	2.50"	1.12"	1.38"	0.79"	1.75"	S1/4-28X1/4	25K	2
C4006-8-2.50	8mm	2.50"	1.12"	1.38"	0.87"	1.75"	S5/16-24X1/4	25K	2
C4006-10-2.50	10mm	2.50"	1.12"	1.38"	1.00"	1.75"	S3/8-24X5/16	25K	2
C4006-12-2.50	12mm	2.50"	1.12"	1.38"	1.37"	1.74"	S7/16-20X3/8	25K	2
C4006-14-3.00	14mm	3.00"	1.62"	1.38"	1.65"	1.75"	S9/16-18X1/2	25K	2
C4006-16-3.00	16mm	3.00"	1.62"	1.38"	1.65"	1.75"	S9/16-18X1/2	25K	2
C4006-20-3.00	20mm	3.00"	2.25"	-	1.75"	-	S5/8-18X1/2	25K	1
C4006-25-4.00	25mm	4.00"	2.62"	1.38"	2.36"	-	S3/4-16X11/16 (2)	25K	4
C4006-32-4.00	32mm	4.00"	2.62"	1.38"	2.48"	-	S3/4-16X11/16 (2)	25K	4

Note: Set Screws are included.

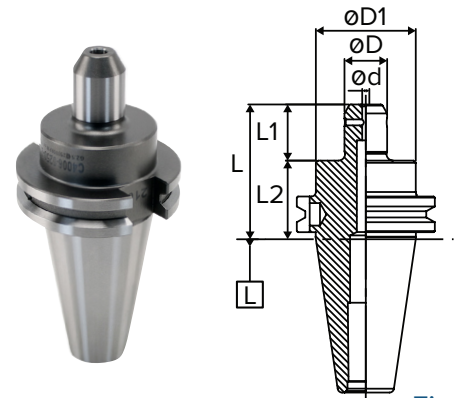


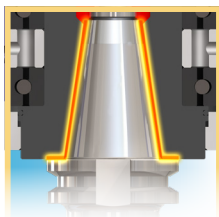
Fig. 2



Fig. 3



Available in  
**TAPER PLUS**  
Dual-taper and flange contact  
See page 163



### TAPER PLUS+ COMBINING TAPER ACCURACY WITH FLANGE RIGIDITY!

- Outstanding Runout Accuracy for longer tool life
- Vibration Dampening for increased productivity
- High Rigidity for smooth and stable cutting



Set Screws  
Page 173



Retention  
Knobs  
Page 267



Tool  
Clampers  
Page 274

# END MILL HOLDERS



## CAT END MILL HOLDERS

### CAT50 - INCH

Part Number	Ød	L	L1	L2	L3	D	D1	Set Screw Part Number	Max. RPM	Fig.
C5006-0250-2.50	1/4"	2.50"	1.11"	1.39"	-	0.79"	2.75"	S1/4-28X1/4	25K	2
C5006-0250-4.00	1/4"	4.00"	2.62"	1.38"	-	0.79"	2.75"	S1/4-28X1/4	25K	2
C5006-0250-6.00	1/4"	6.00"	4.61"	1.39"	-	0.79"	2.75"	S1/4-28X1/4	25K	2
C5006-0250-8.00	1/4"	8.00"	1.49"	5.13"	1.38"	0.79"	2.75"	S1/4-28X1/4	25K	3
C5006-0312-2.50	5/16"	2.50"	1.11"	1.39"	-	0.87"	2.75"	S5/16-24X1/4	25K	2
C5006-0312-4.00	5/16"	4.00"	2.61"	1.39"	-	0.87"	2.75"	S5/16-24X1/4	25K	2
C5006-0312-6.00	5/16"	6.00"	4.61"	1.39"	-	0.87"	2.75"	S5/16-24X1/4	25K	2
C5006-0375-2.50	3/8"	2.50"	1.11"	1.39"	-	1.00"	2.75"	S3/8-24X5/16	25K	2
C5006-0375-4.00	3/8"	4.00"	2.61"	1.39"	-	1.00"	2.75"	S3/8-24X5/16	25K	2
C5006-0375-6.00	3/8"	6.00"	4.61"	1.39"	-	1.00"	2.75"	S3/8-24X5/16	25K	2
C5006-0375-8.00	3/8"	8.00"	1.50"	5.11"	1.39"	1.00"	2.75"	S3/8-24X5/16	25K	3
C5006-0437-2.50	7/16"	2.50"	1.11"	1.39"	-	1.38"	2.75"	S7/16-20X3/8	25K	2
C5006-0437-4.00	7/16"	4.00"	2.61"	1.39"	-	1.38"	2.75"	S7/16-20X3/8	25K	2
C5006-0437-6.00	7/16"	6.00"	4.61"	1.39"	-	1.38"	2.75"	S7/16-20X3/8	25K	2
C5006-0500-2.63	1/2"	2.63"	1.25"	1.38"	-	1.38"	2.75"	S7/16-20X3/8	25K	2
C5006-0500-4.00	1/2"	4.00"	2.61"	1.39"	-	1.38"	2.75"	S7/16-20X3/8	25K	2
C5006-0500-6.00	1/2"	6.00"	4.61"	1.39"	-	1.38"	2.75"	S7/16-20X3/8	25K	2
C5006-0500-8.00	1/2"	8.00"	1.50"	5.11"	1.39"	1.38"	2.75"	S7/16-20X3/8	25K	3
C5006-0625-3.00	5/8"	3.00"	1.62"	1.38"	-	1.65"	2.75"	S9/16-18X1/2	25K	2
C5006-0625-4.00	5/8"	4.00"	2.61"	1.39"	-	1.65"	2.75"	S9/16-18X1/2	25K	2
C5006-0625-6.00	5/8"	6.00"	4.61"	1.39"	-	1.65"	2.75"	S9/16-18X1/2	25K	2
C5006-0625-8.00	5/8"	8.00"	1.70"	4.95"	1.35"	1.65"	2.75"	S9/16-18X1/2	25K	3
C5006-0750-1.75	3/4"	1.75"	1.00"	0.75"	-	1.89"	-	S5/8-18X1/2	25K	1
C5006-0750-3.00	3/4"	3.00"	1.62"	1.38"	-	1.89"	2.75"	S5/8-18X1/2	25K	2
C5006-0750-4.00	3/4"	4.00"	2.62"	1.38"	-	1.89"	2.75"	S5/8-18X1/2	25K	2
C5006-0750-6.00	3/4"	6.00"	4.62"	1.38"	-	1.89"	2.75"	S5/8-18X1/2	25K	2
C5006-0750-8.00	3/4"	8.00"	1.70"	4.91"	1.39"	1.89"	2.75"	S5/8-18X1/2	25K	3
C5006-1000-2.00	1"	2.00"	1.25"	-	-	2.36"	-	S3/4-16X11/16	25K	1
C5006-1000-4.00	1"	4.00"	2.62"	1.38"	-	2.36"	2.75"	S3/4-16X11/16 (2)	25K	5
C5006-1000-6.00	1"	6.00"	4.62"	1.38"	-	2.36"	2.75"	S3/4-16X11/16 (2)	25K	5
C5006-1000-8.00	1"	8.00"	2.95"	3.66"	1.39"	2.36"	2.75"	S3/4-16X11/16 (2)	25K	6

**Note:**

- Set Screws are included.
- Extended Length End Mill Holders can be modified with DIN flange coolant ports.



Available in **TAPER PLUS**<sup>+</sup>  
Dual-taper and flange contact

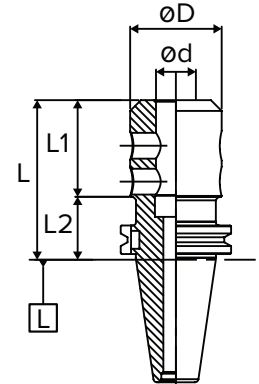


Fig. 4

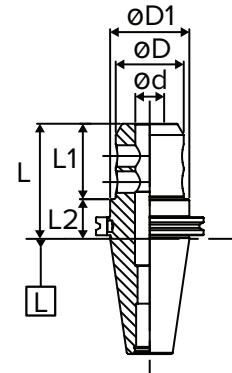


Fig. 5

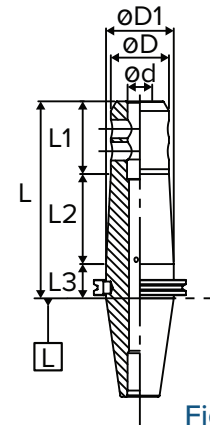


Fig. 6



Set Screws  
Page 173



Retention  
Knobs  
Page 267



Tool  
Clampers  
Page 274

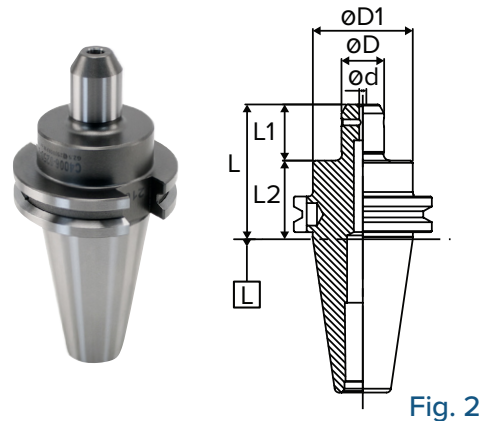
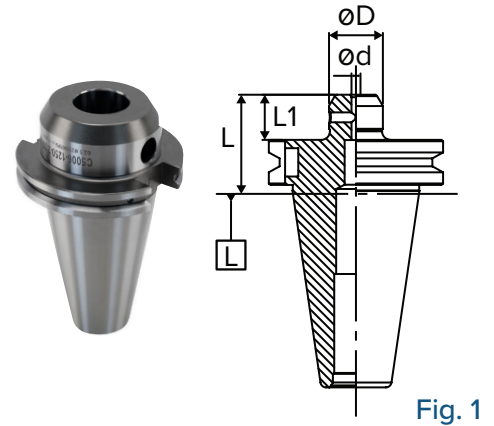
## CAT END MILL HOLDERS

### CAT50 - INCH (CONT.)

Part Number	Ød	L	L1	L2	L3	D	D1	Set Screw Part Number	Max. RPM	Fig.
<b>C5006-1250-2.00</b>	1-1/4"	2.00"	1.25"	-	-	2.75"	-	S3/4-16X11/16	25K	1
<b>C5006-1250-4.00</b>	1-1/4"	4.00"	2.62"	1.38"	-	2.48"	2.75"	S3/4-16X11/16 (2)	25K	5
<b>C5006-1250-6.00</b>	1-1/4"	6.00"	4.61"	1.39"	-	2.48"	2.75"	S3/4-16X11/16 (2)	25K	5
<b>C5006-1250-8.00</b>	1-1/4"	8.00"	2.95"	3.66"	1.39"	2.48"	2.75"	S3/4-16X11/16 (2)	25K	6
<b>C5006-1500-2.25</b>	1-1/2"	2.25"	1.50"	-	-	2.75"	-	S3/4-16X11/16	25K	1
<b>C5006-1500-4.50</b>	1-1/2"	4.50"	3.00"	1.50"	-	2.99"	2.75"	S3/4-16X11/16 (2)	25K	5
<b>C5006-1500-7.00</b>	1-1/2"	7.00"	5.61"	1.39"	-	2.99"	2.75"	S3/4-16X11/16 (2)	25K	5
<b>C5006-2000-3.63</b>	2"	3.63"	2.88"	0.75"	-	3.74"	-	S1-14X7/8 (1) S1-14X7/16 (1)	25K	7
<b>C5006-2000-5.37</b>	2"	5.37"	3.99"	1.38"	-	3.74"	-	S1-14X7/8 (2)	25K	4
<b>C5006-2500-6.00</b>	2-1/2"	6.00"	4.62"	1.38"	-	4.25"	-	S1-14X7/8 (2)	25K	4

**Note:**

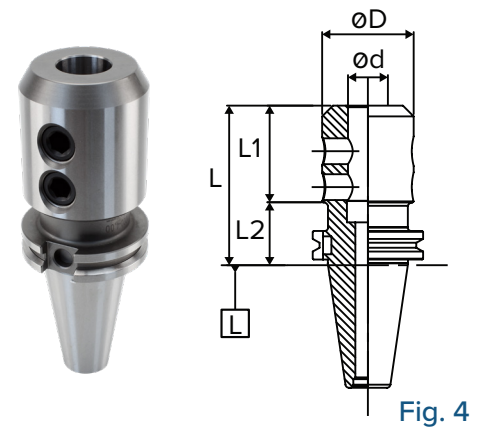
- Set Screws are included.
- Extended Length End Mill Holders can be modified with DIN flange coolant ports.



### CAT50 - METRIC

Part Number	Ød	L	L1	L2	D	D1	Set Screw Part Number	Max. RPM	Fig.
<b>C5006-6-2.50</b>	6mm	2.50"	1.11"	1.39"	0.79"	2.75"	S1/4-28X1/4	25K	2
<b>C5006-8-2.50</b>	8mm	2.50"	1.11"	1.39"	0.87"	2.75"	S5/16-24X1/4	25K	2
<b>C5006-10-2.50</b>	10mm	2.50"	1.11"	1.39"	1.00"	2.75"	S3/8-24X5/16	25K	2
<b>C5006-12-2.63</b>	12mm	2.63"	1.25"	1.38"	1.38"	2.75"	S7/16-20X3/8	25K	2
<b>C5006-14-3.00</b>	14mm	3.00"	1.62"	1.38"	1.65"	2.75"	S9/16-18X1/2	25K	2
<b>C5006-16-3.00</b>	16mm	3.00"	1.61"	1.39"	1.65"	2.75"	S9/16-18X1/2	25K	2
<b>C5006-18-3.00</b>	18mm	3.00"	1.61"	1.39"	1.89"	2.75"	S5/8-18X1/2	25K	2
<b>C5006-20-3.00</b>	20mm	3.00"	1.61"	1.39"	1.89"	2.75"	S5/8-18X1/2	25K	2
<b>C5006-25-4.00</b>	25mm	4.00"	2.61"	1.39"	2.36"	2.75"	S3/4-16X11/16 (2)	25K	5
<b>C5006-32-4.00</b>	32mm	4.00"	2.61"	1.39"	2.48"	2.75"	S3/4-16X11/16 (2)	25K	5
<b>C5006-40-4.50</b>	40mm	4.50"	3.12"	1.38"	3.07"	-	S3/4-16X11/16 (2)	25K	4
<b>C5006-42-4.50</b>	42mm	4.50"	3.11"	1.39"	3.07"	-	S3/4-16X11/16 (2)	25K	4
<b>C5006-50-5.37</b>	50mm	5.31"	3.99"	1.32"	3.74"	-	S1-14X7/8 (2)	25K	4

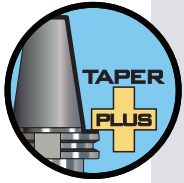
**Note:** Set Screws are included.



# END MILL HOLDERS

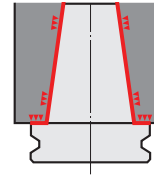


## TAPER PLUS CAT END MILL HOLDERS



### Taper Plus (Dual Contact) Advantages

- Outstanding runout accuracy for longer tool life
- Vibration dampening for increased productivity
- High rigidity for smooth and stable cutting
- Interchangeable between standard and dual face contact spindles
- 53% more surface area contact than just the taper alone



### TAPER PLUS - CAT40

Part Number	Ød	L	L1	L2	D	D1	Set Screw Part Number	Max. RPM	Fig.
NC4006-0500-2.50CP	1/2"	2.50"	1.12"	1.38"	1.38"	1.75"	S7/16-20X3/8	25K	2
NC4006-0500-4.00CP	1/2"	4.00"	1.12"	2.88"	1.38"	1.75"	S7/16-20X3/8	25K	2
NC4006-0625-3.00CP	5/8"	3.00"	1.62"	1.38"	1.65"	1.75"	S9/16-18X1/2	25K	2
NC4006-0750-3.00CP	3/4"	3.00"	2.25"	0.75"	1.75"	-	S5/8-18X1/2	25K	1
NC4006-0750-4.00CP	3/4"	4.00"	3.25"	0.75"	1.75"	-	S5/8-18X1/2	25K	1
NC4006-1000-2.00	1"	2.00"	1.25"	0.75"	2.25"	-	S3/4-16X11/16	25K	1
NC4006-1000-4.00CP	1"	4.00"	2.62"	1.38"	2.36"	-	S3/4-16X11/16 (2)	25K	4
NC4006-1250-4.00CP	1-1/4"	4.00"	2.62"	1.38"	2.48"	-	S3/4-16X11/16 (2)	25K	4
NC4006-1500-4.50CP	1-1/2"	4.50"	3.12"	1.38"	2.99"	-	S3/4-16X11/16 (2)	25K	4

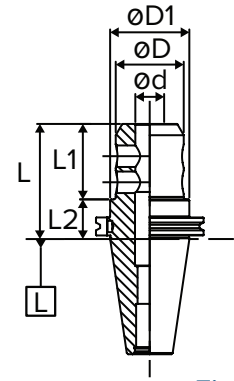


Fig. 5

### TAPER PLUS - CAT50

Part Number	Ød	L	L1	L2	D	D1	Set Screw Part Number	Max. RPM	Fig.
NC5006-0500-2.63CP	1/2"	2.63"	1.25"	1.38"	1.38"	2.75"	S7/16-20X3/8	25K	2
NC5006-0500-4.00CP	1/2"	4.00"	2.62"	1.38"	1.38"	2.75"	S7/16-20X3/8	25K	2
NC5006-0625-3.00CP	5/8"	3.00"	1.62"	1.38"	1.65"	2.75"	S9/16-18X1/2	25K	2
NC5006-0625-4.00CP	5/8"	4.00"	2.62"	1.38"	1.65"	2.75"	S9/16-18X1/2	25K	2
NC5006-0750-3.00CP	3/4"	3.00"	1.62"	1.38"	1.89"	2.75"	S5/8-18X1/2	25K	2
NC5006-0750-4.00CP	3/4"	4.00"	2.62"	1.38"	1.89"	2.75"	S5/8-18X1/2	25K	2
NC5006-0750-6.00CP	3/4"	6.00"	4.62"	1.38"	1.89"	2.75"	S5/8-18X1/2	25K	2
NC5006-1000-4.00CP	1"	4.00"	2.62"	1.38"	2.36"	2.75"	S3/4-16X11/16 (2)	25K	5
NC5006-1000-6.00CP	1"	6.00"	4.62"	1.38"	2.36"	2.75"	S3/4-16X11/16 (2)	25K	5
NC5006-1250-4.00CP	1-1/4"	4.00"	2.62"	1.38"	2.48"	2.75"	S3/4-16X11/16 (2)	25K	5
NC5006-1250-6.00CP	1-1/4"	6.00"	4.61"	1.39"	2.48"	2.75"	S3/4-16X11/16 (2)	25K	5
NC5006-1500-4.50CP	1-1/2"	4.50"	3.12"	1.38"	2.99"	-	S3/4-16X11/16 (2)	25K	4
NC5006-2000-5.37CP	2"	5.37"	3.99"	1.38"	3.74"	-	S1-14X7/8 (2)	25K	4

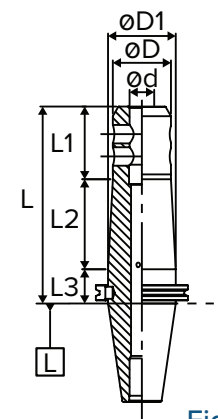


Fig. 6

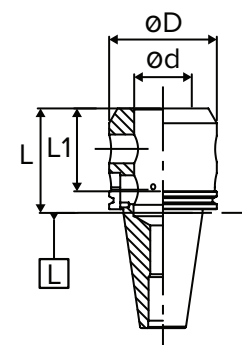
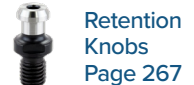


Fig. 7



## BT END MILL HOLDERS

### FEATURES

- End mill ID bore T.I.R. < 0.0002"
- Through-spindle coolant capability
- AT3 or better taper



**T.I.R.**  
< 0.0002" in ID bore



**Coolant-Thru**



**Speed**  
Up to 30,000 RPM @ G2.5



Please note that the maximum RPM listed in our catalog may vary depending on the toolholder shank, weight, balanceability and the G rating.

### BT30 - INCH

Part Number	Ød	L	L1	L2	D	D1	Set Screw Part Number	Max. RPM	Fig.
<b>B3006-0125-2.36</b>	1/8"	2.36"	0.97"	1.39"	0.75"	1.18"	6-32X1/4	30K	8
<b>B3006-0187-2.36</b>	3/16"	2.36"	0.97"	1.39"	0.75"	1.26"	S8-32X1/4	30K	8
<b>B3006-0250-2.36</b>	1/4"	2.36"	0.99"	1.37"	0.79"	1.18"	S1/4-28X1/4	30K	8
<b>B3006-0312-2.36</b>	5/16"	2.36"	0.97"	1.39"	0.87"	1.38"	S5/16-24X1/4	30K	8
<b>B3006-0375-2.36</b>	3/8"	2.36"	0.97"	1.39"	1.00"	1.18"	S3/8-24X5/16	30K	8
<b>B3006-0437-2.36</b>	7/16"	2.36"	1.50"	0.86"	1.38"	-	S7/16-20X3/8	30K	9
<b>B3006-0500-2.36</b>	1/2"	2.36"	1.50"	0.86"	1.38"	-	S7/16-20X3/8	30K	9
<b>B3006-0625-2.50</b>	5/8"	2.50"	1.63"	0.87"	1.65"	-	S9/16-18X1/2	30K	9
<b>B3006-0750-3.00</b>	3/4"	3.00"	2.13"	0.87"	1.88"	-	S5/8-18X1/2	30K	10
<b>B3006-0875-3.54</b>	7/8"	3.54"	2.48"	1.06"	2.01"	-	S5/8-18X1/2 (2)	30K	11
<b>B3006-1000-3.54</b>	1"	3.54"	2.68"	0.86"	2.36"	-	S3/4-16X11/16 (2)	30K	11

Note: Set Screws are included.

### BT30 - METRIC

Part Number	Ød	L	L1	L2	D	D1	Set Screw Part Number	Max. RPM	Fig.
<b>B3006-6-2.50</b>	6mm	2.50"	1.00"	1.50"	0.79"	1.18"	S1/4-28X1/4	30K	8
<b>B3006-10-2.50</b>	10mm	2.50"	1.00"	1.50"	1.00"	1.18"	S3/8-24X5/16	30K	8
<b>B3006-12-2.50</b>	12mm	2.50"	1.63"	0.87"	1.38"	-	S7/16-20X3/8	30K	9
<b>B3006-16-2.50</b>	16mm	2.50"	1.63"	0.87"	1.65"	-	S9/16-18X1/2	30K	9
<b>B3006-20-3.50</b>	20mm	3.50"	2.63"	0.87"	1.89"	-	S5/8-18X1/2	30K	9
<b>B3006-25-3.50</b>	25mm	3.50"	2.44"	1.06"	2.36"	-	S3/4-16X11/16 (2)	30K	11

Note: Set Screws are included.

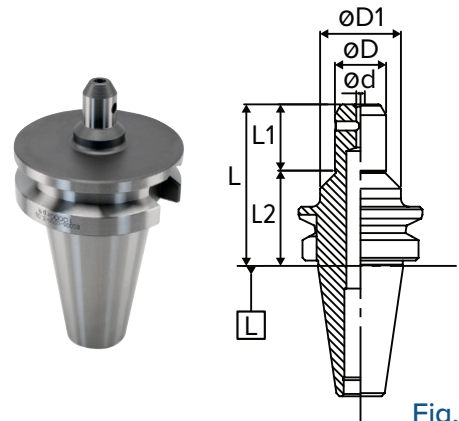


Fig. 8

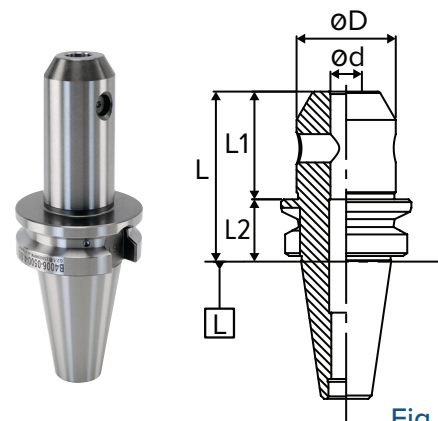


Fig. 9

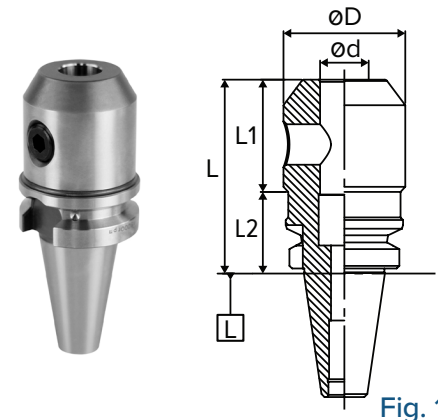


Fig. 10



Set Screws  
Page 173



Retention  
Knobs  
Page 267



Tool  
Clampers  
Page 274

# END MILL HOLDERS



## BT END MILL HOLDERS

### BT40 - INCH

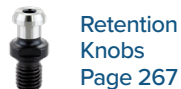
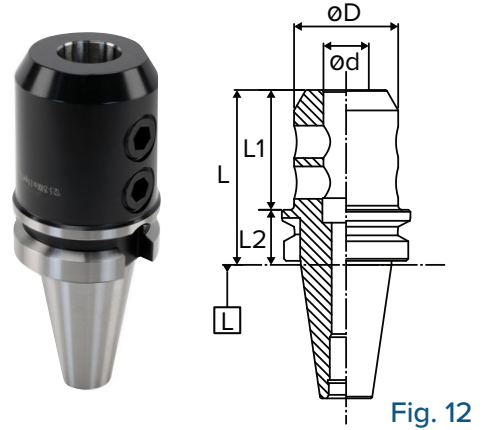
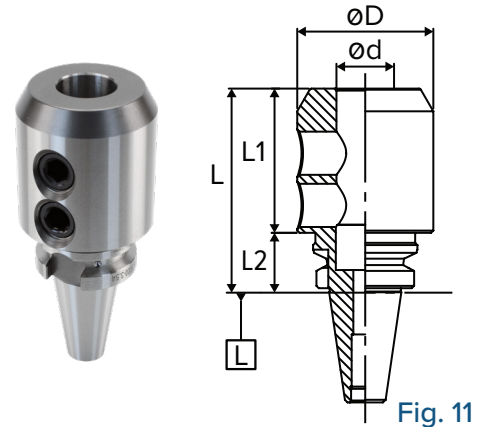
Part Number	Ød	L	L1	L2	D	D1	Set Screw Part Number	Max. RPM	Fig.
B4006-0125-1.38	1/8"	1.38"	0.32"	1.07"	0.75"	-	S6-32X1/4	25K	9
B4006-0125-2.36	1/8"	2.36"	0.98"	1.38"	0.75"	1.75"	S6-32X1/4	25K	8
B4006-0125-4.00	1/8"	4.00"	2.94"	1.06"	0.75"	-	S6-32X1/4	25K	9
B4006-0187-2.50	3/16"	2.50"	1.12"	1.38"	0.75"	1.75"	S8-32X1/4	25K	8
B4006-0187-4.00	3/16"	4.00"	2.94"	1.06"	0.75"	-	S8-32X1/4	25K	9
B4006-0250-1.38	1/4"	1.38"	0.32"	1.07"	0.79"	-	S1/4-28X1/4	25K	9
B4006-0250-2.50	1/4"	2.50"	1.12"	1.38"	0.79"	1.75"	S1/4-28X1/4	25K	8
B4006-0250-4.00	1/4"	4.00"	2.62"	1.38"	0.79"	1.75"	S1/4-28X1/4	25K	8
B4006-0312-2.50	5/16"	2.50"	0.97"	1.53"	0.87"	1.18"	S5/16-24X1/4	25K	8
B4016-0312-4.00	5/16"	4.00"	2.94"	1.06"	0.87"	-	S5/16-24X1/4	25K	9
B4006-0375-2.50	3/8"	2.50"	1.12"	1.38"	1.00"	1.75"	S3/8-24x5/16	25K	8
B4006-0375-4.00	3/8"	4.00"	2.96"	1.04"	1.00"	-	S3/8-24x5/16	25K	9
B4006-0437-2.50	7/16"	2.50"	1.44"	1.06"	1.38"	-	S7/16-20X3/8	25K	9
B4006-0500-1.75	1/2"	1.75"	0.69"	1.06"	1.38"	-	S7/16-20X3/8	25K	9
B4006-0500-2.50	1/2"	2.50"	1.44"	1.06"	1.38"	-	S7/16-20X3/8	25K	9
B4006-0500-4.00	1/2"	4.00"	2.94"	1.06"	1.38"	-	S7/16-20X3/8	25K	9
B4006-0625-1.75	5/8"	1.75"	0.69"	1.06"	1.65"	-	S9/16-18X1/2	25K	9
B4006-0625-2.50	5/8"	2.50"	1.44"	1.06"	1.65"	-	S9/16-18X1/2	25K	9
B4006-0625-4.00	5/8"	4.00"	2.94"	1.06"	1.65"	-	S9/16-18X1/2	25K	9
B4006-0750-1.75	3/4"	1.75"	0.69"	1.06"	1.89"	-	S5/8-18X1/2	25K	9
B4006-0750-2.50	3/4"	2.50"	1.44"	1.06"	1.89"	-	S5/8-18X1/2	25K	9
B4006-0750-4.00	3/4"	4.00"	2.94"	1.06"	1.89"	-	S5/8-18X1/2	25K	9
B4006-0875-3.38	7/8"	3.38"	2.31"	1.07"	2.01"	-	S5/8-18X1/2 (2)	25K	12
B4006-1000-2.00	1"	2.00"	0.94"	1.06"	2.25"	-	S3/4-16X11/16	25K	9
B4006-1000-3.56	1"	3.54"	2.50"	1.04"	2.36"	-	S3/4-16X11/16 (2)	25K	12
B4006-1250-2.00	1-1/4"	2.00"	0.94"	1.06"	2.25"	-	S3/4-16X11/16	25K	9
B4006-1250-3.56	1-1/4"	3.54"	2.50"	1.04"	2.48"	-	S3/4-16X11/16 (2)	25K	12
B4006-1500-4.50	1-1/2"	4.50"	3.44"	1.06"	3.00"	-	S3/4-16X11/16 (2)	25K	12

Note: Set Screws are included.

### BT40 - METRIC

Part Number	Ød	L	L1	L2	D	D1	Set Screw Part Number	Max. RPM	Fig.
B4006-6-2.50	6mm	2.50"	1.00"	1.50"	0.79"	1.18"	S1/4-28X1/4	25K	8
B4006-8-2.50	8mm	2.50"	1.00"	1.50"	0.87"	1.18"	S5/16-24X1/4	25K	8
B4006-10-2.50	10mm	2.50"	1.00"	1.50"	1.00"	1.18"	S3/8-24x5/16	25K	8
B4006-12-2.50	12mm	2.50"	1.44"	1.06"	1.38"	-	S7/16-20X3/8	25K	9
B4006-14-2.50	14mm	2.50"	1.44"	1.06"	1.65"	-	S9/16-18X1/2	25K	9
B4006-16-2.50	16mm	2.50"	1.44"	1.06"	1.65"	-	S9/16-18X1/2	25K	9
B4006-18-2.50	18mm	2.50"	1.44"	1.06"	1.89"	-	S5/8-18X1/2	25K	9
B4006-20-2.50	20mm	2.50"	1.44"	1.06"	1.89"	-	S5/8-18X1/2	25K	9
B4006-25-3.56	25mm	3.56"	2.50"	1.06"	2.36"	-	S3/4-16X11/16 (2)	25K	12
B4006-32-3.56	32mm	3.56"	2.50"	1.06"	2.48"	-	S3/4-16X11/16 (2)	25K	12

Note: Set Screws are included.



## BT END MILL HOLDERS

### BT50 - INCH

Part Number	Ød	L	L1	L2	D	D1	Set Screw Part Number	Max. RPM	Fig.
<b>B5006-0250-3.00</b>	1/4"	3.00"	0.76"	2.24"	0.79"	1.18"	S1/4-28X1/4	25K	8
<b>B5006-0250-6.00</b>	1/4"	6.00"	1.21"	4.79"	0.79"	1.18"	S1/4-28X1/4	25K	8
<b>B5006-0375-2.75</b>	3/8"	2.75"	1.26"	1.49"	1.00"	-	S3/8-24X5/16	25K	9
<b>B5006-0375-6.00</b>	3/8"	6.00"	4.50"	1.50"	1.00"	-	S3/8-24X5/16	25K	9
<b>B5006-0500-3.00</b>	1/2"	3.00"	1.50"	1.50"	1.38"	-	S7/16-20X3/8	25K	9
<b>B5006-0500-6.00</b>	1/2"	6.00"	4.50"	1.50"	1.38"	-	S7/16-20X3/8	25K	9
<b>B5006-0625-3.00</b>	5/8"	3.00"	1.50"	1.50"	1.65"	-	S9/16-18X1/2	25K	9
<b>B5006-0750-3.00</b>	3/4"	3.00"	1.50"	1.50"	1.89"	-	S5/8-18X1/2	25K	9
<b>B5006-0750-6.00</b>	3/4"	6.00"	4.50"	1.50"	1.89"	-	S5/8-18X1/2	25K	9
<b>B5006-1000-4.00</b>	1"	4.00"	2.50"	1.50"	2.36"	-	S3/4-16X11/16 (2)	25K	12
<b>B5006-1000-6.00</b>	1"	6.00"	4.50"	1.50"	2.36"	-	S3/4-16X11/16 (2)	25K	12
<b>B5006-1250-4.00</b>	1-1/4"	4.00"	2.50"	1.50"	2.48"	-	S3/4-16X11/16 (2)	25K	12
<b>B5006-1250-6.00</b>	1-1/4"	6.00"	4.50"	1.50"	2.48"	-	S3/4-16X11/16 (2)	25K	12
<b>B5006-1500-4.50</b>	1-1/2"	4.50"	3.00"	1.50"	3.00"	-	S3/4-16X11/16 (2)	25K	12
<b>B5006-2000-5.00</b>	2"	5.00"	3.00"	2.00"	3.74"	-	S1-14X5/8 (2)	25K	12

Note: Set Screws are included.

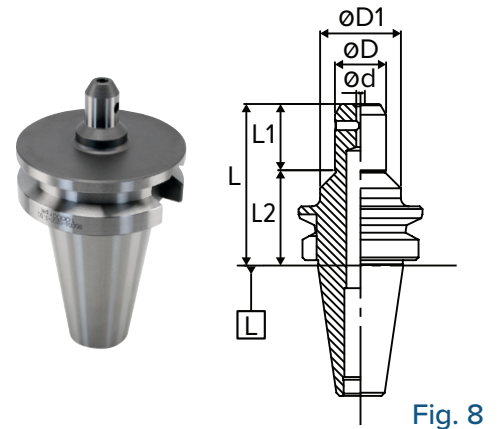


Fig. 8

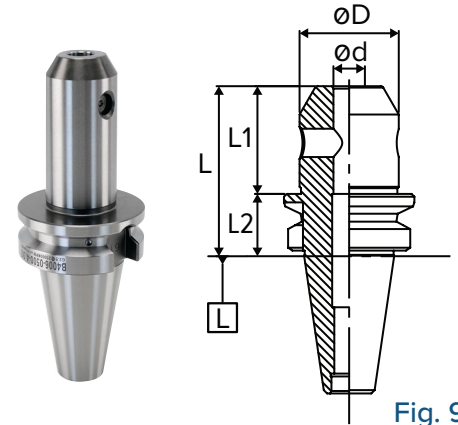


Fig. 9

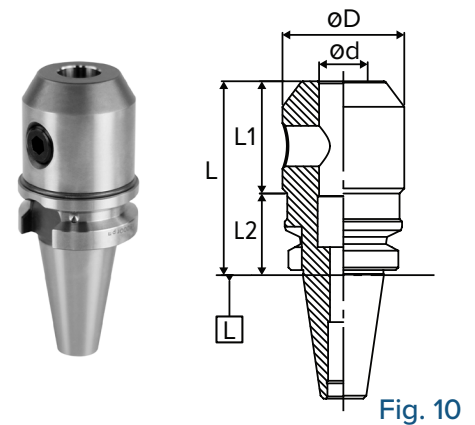


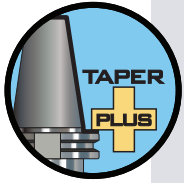
Fig. 10



# END MILL HOLDERS

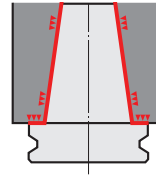


## TAPER PLUS BT END MILL HOLDERS



### Taper Plus (Dual Contact) Advantages

- Outstanding runout accuracy for longer tool life
- Vibration dampening for increased productivity
- High rigidity for smooth and stable cutting
- Interchangeable between standard and dual face contact spindles
- 53% more surface area contact than just the taper alone



### TAPER PLUS - NBT30 - INCH

Part Number	Ød	L	L1	L2	D	D1	Set Screw Part Number	Max. RPM	Fig.
NB3006-0125-2.36CP	1/8"	2.36"	1.00"	1.36"	0.75"	1.18"	S6-32X1/4	30K	8
NB3006-0187-2.36CP	3/16"	2.36"	1.00"	1.36"	0.75"	1.26"	S8-32X1/4	30K	8
NB3006-0250-2.36CP	1/4"	2.36"	1.00"	1.36"	0.79"	1.18"	S1/4-28X1/4	30K	8
NB3006-0312-2.36CP	5/16"	2.36"	1.00"	1.36"	0.87"	1.38"	S5/16-24X1/4	30K	8
NB3006-0375-2.36CP	3/8"	2.36"	1.00"	1.36"	1.00"	1.18"	S3/8-24x5/16	30K	8
NB3006-0500-2.36CP	1/2"	2.36"	1.50"	0.86"	1.38"	-	S7/16-20x3/8	30K	9
NB3006-0625-2.50CP	5/8"	2.50"	1.63"	0.87"	1.65"	-	S9/16-18X1/2	30K	9
NB3006-0750-3.00CP	3/4"	3.00"	1.73"	1.27"	1.88"	-	S5/8-18x1/2	30K	10
NB3006-1000-3.54CP	1"	3.54"	2.44"	1.10"	2.36"	-	S3/4-16X11/16(2)	30K	11

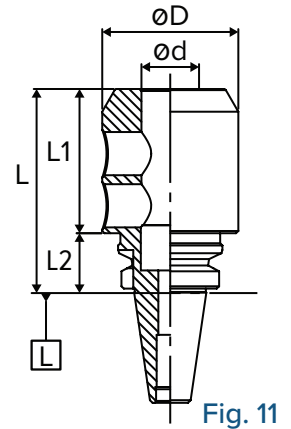


Fig. 11

### TAPER PLUS - NBT40 - INCH

Part Number	Ød	L	L1	L2	D	Set Screw Part Number	Max. RPM	Fig.
NB4006-0500-4.00CP	1/2"	4.00"	2.94"	1.06"	1.38"	S7/16-20x3/8	25K	9
NB4006-1250-3.56CP	1-1/4"	3.54"	2.50"	1.04"	2.48"	S3/4-16X11/16 (2)	25K	12

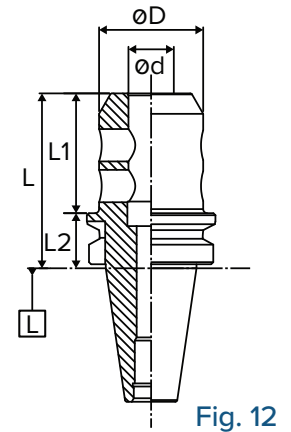


Fig. 12



Set Screws  
Page 173



Retention  
Knobs  
Page 267



Tool  
Clampers  
Page 274

## POLYGONAL TAPER END MILL HOLDERS

### FEATURES

- End mill ID bore T.I.R. < 0.0002"
- Through-spindle coolant capability
- AT3 or better taper



**T.I.R.**  
< 0.0002" in ID bore



**Coolant-Thru**



**Speed**  
Up to 30,000 RPM @ G2.5



Please note that the maximum RPM listed in our catalog may vary depending on the toolholder shank, weight, balanceability and the G rating.

### C4/C5/C6/C8 - INCH

Part Number	Ød	L	L1	D	Set Screw Part Number	Max. RPM	Fig.
C4-EM0250-50	1/4"	1.97"	1.18"	0.79"	S1/4-28X1/4	25K	13
C4-EM0375-50	3/8"	1.97"	1.18"	1.00"	S3/8-24X5/16	25K	13
C4-EM0500-55	1/2"	2.17"	1.38"	1.38"	S7/16-20X3/8	25K	13
C4-EM0625-55	5/8"	2.17"	1.38"	1.65"	S9/16-18X1/2	25K	13
C5-EM0250-50	1/4"	1.97"	1.18"	0.79"	S1/4-28XS1/4	25K	13
C5-EM0375-55	3/8"	2.17"	1.38"	1.00"	S3/8-24X5/16	25K	13
C5-EM0500-60	1/2"	2.36"	1.58"	1.38"	S7/16-20X3/8	25K	13
C5-EM0625-60	5/8"	2.36"	1.58"	1.65"	S9/16-18X1/2	25K	13
C5-EM0750-60	3/4"	2.36"	1.57"	1.89"	S5/8-18X1/2	25K	13
C5-EM1000-80	1"	3.15"	2.36"	2.36"	S3/4-16X11/16(2)	25K	14
C6-EM0250-55	1/4"	2.17"	1.30"	0.79"	S1/4-28X1/4	25K	13
C6-EM0375-60	3/8"	2.36"	1.50"	1.00"	S3/8-24X5/16	25K	13
C6-EM0500-60	1/2"	2.36"	1.50"	1.38"	S7/16-20X3/8	25K	13
C6-EM0625-65	5/8"	2.56"	1.69"	1.65"	S9/16-18X1/2	25K	13
C6-EM0750-65	3/4"	2.56"	1.69"	1.89"	S5/8-18X1/2	25K	13
C6-EM1000-80	1"	3.15"	2.28"	2.36"	S3/4-16X11/16(2)	25K	14
C6-EM1250-90	1-1/4"	3.54"	-	2.48"	S3/4-16X11/16(2)	25K	15
C8-EM0250-70	1/4"	2.76"	1.58"	0.79"	S1/4-28X1/4	25K	13
C8-EM0375-70	3/8"	2.76"	1.58"	1.00"	S3/8-24X5/16	25K	13
C8-EM0500-70	1/2"	2.76"	1.58"	1.38"	S7/16-20X3/8	25K	13
C8-EM0625-70	5/8"	2.76"	1.58"	1.65"	S9/16-18X1/2	25K	13
C8-EM0750-70	3/4"	2.76"	1.58"	1.89"	S5/8-18X1/2	25K	13
C8-EM1000-80	1"	3.15"	1.97"	2.36"	S3/4-16X11/16	25K	13
C8-EM1250-80	1-1/4"	3.15"	1.97"	2.48"	S3/4-16X11/16	25K	13

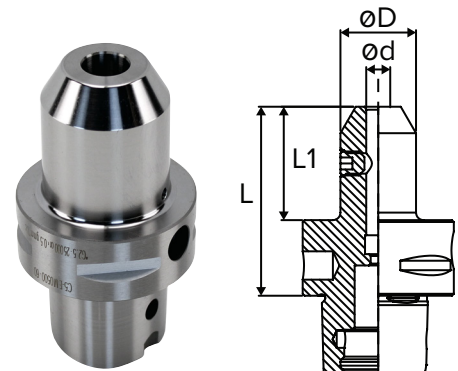


Fig. 13

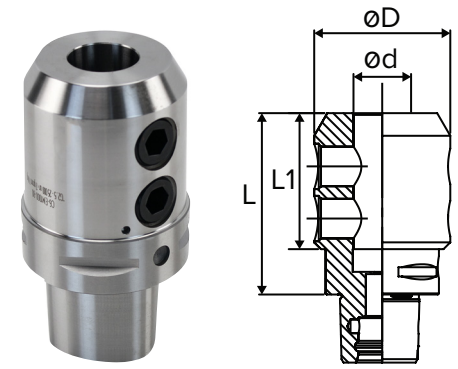


Fig. 14

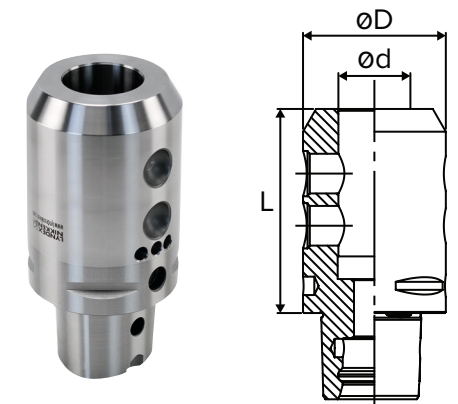


Fig. 15



Set Screws  
Page 173



Retention  
Knobs  
Page 267



Tool  
Clampers  
Page 274

# END MILL HOLDERS



## HSK END MILL HOLDERS

### FEATURES

- End mill ID bore T.I.R. < 0.0002"
- Through-spindle coolant capability
- AT3 or better taper



**T.I.R.**  
< 0.0002" in ID bore



**Coolant-Thru**



**Speed**  
Up to 25,000 RPM @ G2.5



Please note that the maximum RPM listed in our catalog may vary depending on the toolholder shank, weight, balanceability and the G rating.

### HSK63A

Part Number	Ød	L	L1	L2	D	D1	Set Screw Part Number	Max. RPM	Fig.
HSK63A-0187-3.00	3/16"	3.00"	1.58"	1.42"	0.75"	1.58"	S8-32X1/4	25K	16
HSK63A-0187-5.00	3/16"	5.00"	3.58"	1.42"	0.75"	1.58"	S8-32X1/4	25K	16
HSK63A-0250-3.00	1/4"	3.00"	1.58"	1.42"	0.79"	1.58"	S1/4-28X1/4	25K	16
HSK63A-0250-5.00	1/4"	5.00"	3.58"	1.42"	0.79"	1.58"	S1/4-28X1/4	25K	16
HSK63A-0312-3.00	5/16"	3.00"	1.98"	1.02"	0.87"	-	S5/16-24X1/4	25K	17
HSK63A-0312-5.00	5/16"	5.00"	3.98"	1.02"	0.87"	-	S5/16-24X1/4	25K	17
HSK63A-0375-3.50	3/8"	3.50"	2.48"	1.02"	1.00"	-	S3/8-24X5/16	25K	17
HSK63A-0375-5.00	3/8"	5.00"	3.98"	1.02"	1.00"	-	S3/8-24X5/16	25K	17
HSK63A-0437-4.00	7/16"	4.00"	2.98"	1.02"	1.38"	-	S7/16-20X3/8	25K	17
HSK63A-0437-5.00	7/16"	5.00"	3.98"	1.02"	1.38"	-	S7/16-20X3/8	25K	17
HSK63A-0500-4.00	1/2"	4.00"	2.98"	1.02"	1.38"	-	S7/16-20X3/8	25K	17
HSK63A-0500-5.00	1/2"	5.00"	3.98"	1.02"	1.38"	-	S7/16-20X3/8	25K	17
HSK63A-0625-4.00	5/8"	4.00"	2.98"	1.02"	1.65"	-	S9/16-18X1/2	25K	17
HSK63A-0625-5.00	5/8"	5.00"	3.98"	1.02"	1.65"	-	S9/16-18X1/2	25K	17
HSK63A-0750-4.50	3/4"	4.50"	3.48"	1.02"	1.89"	-	S5/8-18X1/2	25K	17
HSK63A-0750-6.00	3/4"	6.00"	4.98"	1.02"	1.89"	-	S5/8-18X1/2	25K	17
HSK63A-1000-4.50	1"	4.50"	2.85"	1.65"	2.36"	-	S3/4-16X11/16 (2)	25K	18
HSK63A-1000-6.00	1"	6.00"	4.35"	1.65"	2.36"	-	S3/4-16X11/16 (2)	25K	18
HSK63A-1250-4.50	1-1/4"	4.50"	2.85"	1.65"	2.48"	-	S3/4-16X11/16 (2)	25K	18
HSK63A-1250-6.00	1-1/4"	6.00"	4.35"	1.65"	2.48"	-	S3/4-16X11/16 (2)	25K	18

**Note:**

- Set Screws are included.
- Coolant tube and coolant tube wrench are sold separately.

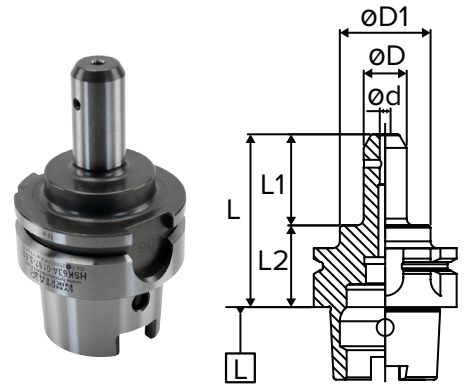


Fig. 16

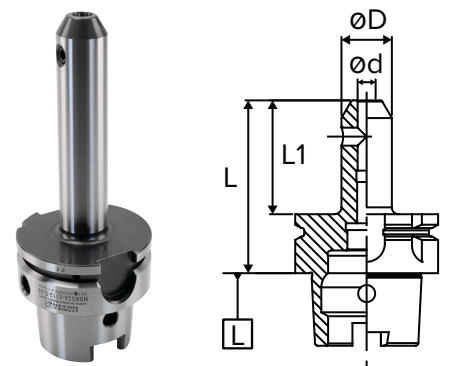


Fig. 17

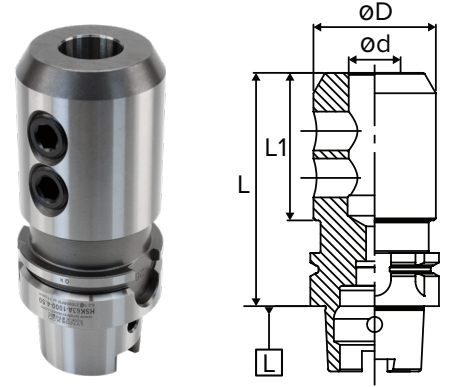


Fig. 18



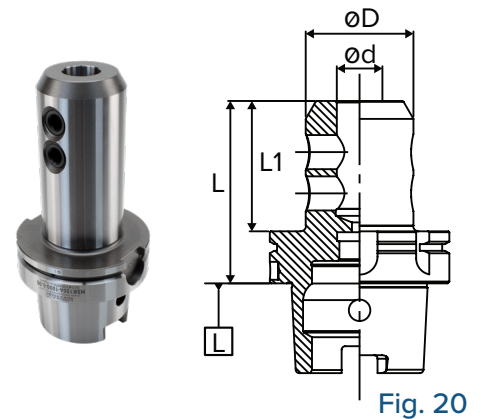
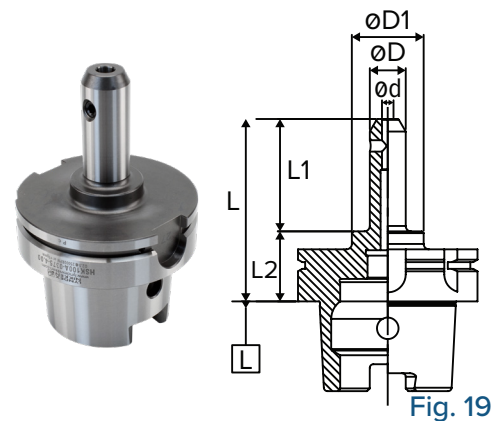
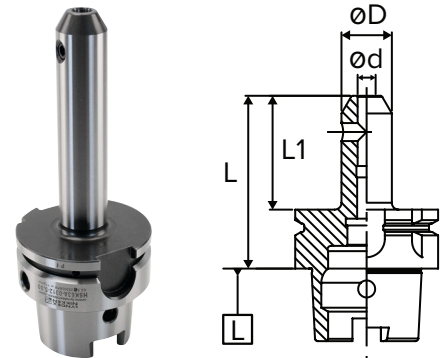
## HSK END MILL HOLDERS

### HSK100A

Part Number	Ød	L	L1	L2	D	D1	Set Screw Part Number	Max. RPM	Fig.
HSK100A-0250-4.00	1/4"	4.00"	2.47"	1.54"	0.79"	1.58"	S1/4-28X1/4	25K	19
HSK100A-0250-6.00	1/4"	6.00"	4.47"	1.54"	0.79"	1.58"	S1/4-28X1/4	25K	19
HSK100A-0312-4.00	5/16"	4.00"	2.47"	1.54"	0.87"	1.58"	S5/16-24X1/4	25K	19
HSK100A-0312-6.00	5/16"	6.00"	4.47"	1.54"	0.87"	1.58"	S5/16-24X1/4	25K	19
HSK100A-0375-4.00	3/8"	4.00"	2.47"	1.54"	1.00"	1.58"	S3/8-24X5/16	25K	19
HSK100A-0375-6.00	3/8"	6.00"	4.47"	1.54"	1.00"	1.58"	S3/8-24X5/16	25K	19
HSK100A-0437-4.00	7/16"	4.00"	1.38"	2.62"	1.38"	-	S7/16-20X3/8	25K	17
HSK100A-0437-6.00	7/16"	6.00"	4.86"	1.14"	1.38"	-	S7/16-20X3/8	25K	17
HSK100A-0500-4.00	1/2"	4.00"	2.86"	1.14"	1.38"	-	S7/16-20X3/8	25K	17
HSK100A-0500-6.00	1/2"	6.00"	4.86"	1.14"	1.38"	-	S7/16-20X3/8	25K	17
HSK100A-0625-4.00	5/8"	4.00"	2.86"	1.14"	1.65"	-	S9/16-18X1/2	25K	17
HSK100A-0625-6.00	5/8"	6.00"	4.86"	1.14"	1.65"	-	S9/16-18X1/2	25K	17
HSK100A-0750-4.00	3/4"	4.00"	2.86"	1.14"	1.89"	-	S5/8-18X1/2	25K	17
HSK100A-0750-6.00	3/4"	6.00"	4.86"	1.14"	1.89"	-	S5/8-18X1/2	25K	17
HSK100A-1000-4.00	1"	4.00"	2.86"	1.14"	2.36"	-	S3/4-16X11/16 (2)	25K	20
HSK100A-1000-6.00	1"	6.00"	4.86"	1.14"	2.36"	-	S3/4-16X11/16 (2)	25K	20
HSK100A-1250-4.00	1-1/4"	4.00"	2.86"	1.14"	2.48"	-	S3/4-16X11/16 (2)	25K	20
HSK100A-1250-6.00	1-1/4"	6.00"	4.86"	1.14"	2.48"	-	S3/4-16X11/16 (2)	25K	20
HSK100A-1500-4.00	1-1/2"	4.00"	2.86"	1.14"	2.99"	-	S3/4-16X11/16 (2)	25K	17
HSK100A-1500-6.00	1-1/2"	6.00"	4.86"	1.14"	2.99"	-	S3/4-16X11/16 (2)	25K	20

**Note:**

- Set Screws are included.
- Coolant tube and coolant tube wrench are sold separately.



# END MILL HOLDERS



## NMTB END MILL HOLDERS

### FEATURES

- End mill ID bore T.I.R. < 0.0002"
- AT3 or better taper



**T.I.R.**  
< 0.0002" in ID bore



Please note that the maximum RPM listed in our catalog may vary depending on the toolholder shank, weight, balanceability and the G rating.

### NMTB30

Part Number	Ød	L	L1	L2	D	D1	Set Screw Part Number	Fig.
N3006-0125-1.75	1/8"	1.75"	1.00"	0.75"	0.75"	1.18"	S6-32X1/4	21
N3006-0250-1.75	1/4"	1.75"	1.03"	0.72"	0.79"	1.18"	S1/4-28X1/4	21
N3006-0375-1.75	3/8"	1.75"	1.00"	0.75"	1.00"	1.18"	S3/8-24X5/16	21
N3006-0500-1.75	1/2"	1.75"	1.33"	0.42"	1.38"	-	S7/16-20X3/8	22
N3006-0625-1.75	5/8"	1.75"	1.33"	0.42"	1.44"	-	S9/16-18X1/2	22
N3006-0750-2.25	3/4"	2.25"	1.44"	0.82"	1.89"	-	S5/8-18X1/2	23
N3006-0875-2.50	7/8"	2.50"	1.69"	0.82"	2.01"	-	S5/8-18X1/2	23
N3006-1000-2.69	1"	2.63"	1.87"	0.76"	2.36"	-	S3/4-16X11/16	23
N3006-1250-3.62	1-1/4"	3.54"	2.81"	0.73"	2.48"	-	S3/4-16X11/16 (2)	24

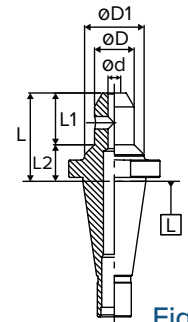


Fig. 21

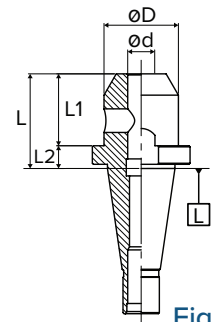


Fig. 22

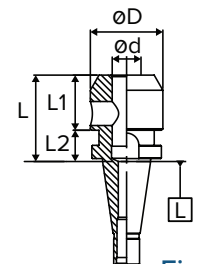


Fig. 23

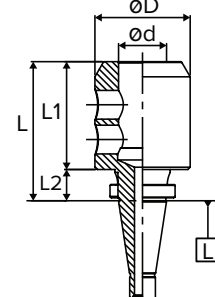


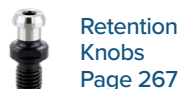
Fig. 24

### NMTB40

Part Number	Ød	L	L1	L2	D	D1	Set Screw Part Number	Fig.
N4006-0125-2.31	1/8"	2.31"	1.00"	1.31"	0.75"	1.18"	S6-32X1/4	21
N4006-0187-2.31	1/8"	2.31"	1.00"	1.31"	0.75"	1.18"	S8-32X1/4	21
N4006-0250-2.31	1/4"	2.31"	1.00"	1.31"	0.79"	1.18"	S1/4-28X1/4	21
N4006-0312-2.31	5/16"	2.31"	1.00"	1.31"	0.87"	1.18"	S5/16-24X1/4	21
N4006-0375-2.31	3/8"	2.31"	1.00"	1.31"	1.00"	1.18"	S3/8-24X5/16	21
N4006-0437-2.31	7/16"	2.31"	1.92"	0.39"	1.38"	-	S7/16-20X3/8	22
N4006-0500-2.31	1/2"	2.31"	1.92"	0.39"	1.38"	-	S7/16-20X3/8	22
N4006-0625-2.31	5/8"	2.31"	1.92"	0.39"	1.65"	-	S9/16-18X1/2	22
N4006-0750-2.31	3/4"	2.31"	1.92"	0.39"	1.89"	-	S5/8-18X1/2	22
N4006-0875-2.94	7/8"	2.95"	2.13"	0.82"	2.01"	-	S5/8-18X1/2 (2)	24
N4006-1000-3.37	1"	3.37"	2.57"	0.80"	2.36"	-	S3/4-16X11/16 (2)	24
N4006-1250-3.69	1-1/4"	3.69"	2.89"	0.81"	2.48"	-	S3/4-16X11/16 (2)	24

**Note:**

- Set Screws are included.
- NMTB shanks are suitable for use with Erickson Quick Change spindles.



## R8 & STRAIGHT SHANK END MILL HOLDERS

### FEATURES

- End mill ID bore T.I.R. < 0.0002"
- AT3 or better taper



**T.I.R.**  
< 0.0002" in ID bore

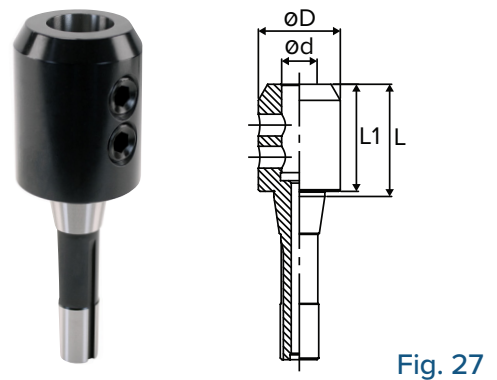
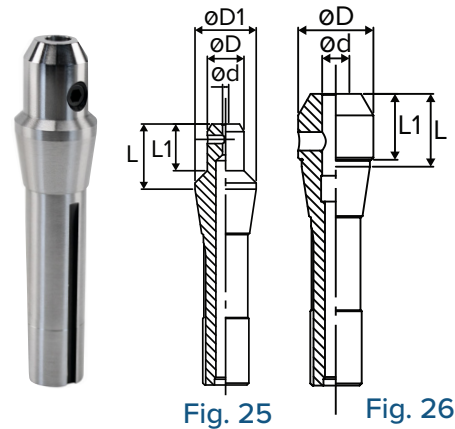


Please note that the maximum RPM listed in our catalog may vary depending on the toolholder shank, weight, balanceability and the G rating.

### R8

Part Number	Ød	L	L1	D	D1	Set Screw Part Number	Fig.
830-008-1.33	1/8"	1.33"	0.95"	0.75"	1.25"	S6-32X1/4	25
830-012-1.33	3/16"	1.33"	0.95"	0.75"	1.25"	S8-32X1/4	25
830-016-1.33	1/4"	1.33"	0.97"	0.79"	1.25"	S1/4-28X1/4	25
830-020-1.33	5/16"	1.33"	1.02"	0.87"	1.25"	S5/16-24X1/4	25
830-024-1.33	3/8"	1.33"	1.08"	1.00"	1.25"	S3/8-24X5/16	25
830-028-1.33	7/16"	1.33"	1.21"	1.38"	-	S7/16-20X3/8	26
830-032-1.33	1/2"	1.33"	1.21"	1.38"	-	S7/16-20X3/8	26
830-040-1.50	5/8"	1.50"	1.37"	1.65"	-	S9/16-18X1/2	26
830-048-2.37	3/4"	2.37"	2.24"	1.89"	-	S5/8-18X1/2	26
830-056-2.75	7/8"	2.75"	2.62"	2.01"	-	S5/8-18X1/2 (2)	27
830-064-3.25	1"	3.25"	3.12"	2.36"	-	S3/4-16X11/16 (2)	27
830-080-3.25	1-1/4"	3.25"	3.12"	2.48"	-	S3/4-16X11/16 (2)	27
830-096-3.75	1-1/2"	3.75"	3.62"	2.99"	-	S3/4-16X11/16 (2)	27

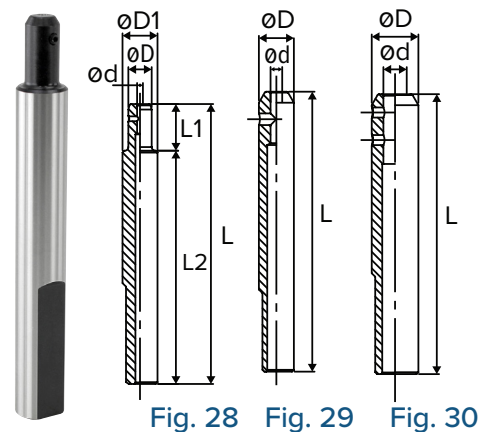
Note: Set Screws are included.



### STRAIGHT SHANK

Part Number	Ød	L	L1	L2	D	D1	Set Screw Part Number	Fig.
S7506-0125-6.00	1/8"	6.00"	1.00"	5.00"	0.50"	0.75"	S6-32X1/4	28
S7506-0187-6.00	3/16"	6.00"	-	-	0.75"	-	S8-32X1/4	29
S7506-0250-6.00	1/4"	6.00"	-	-	0.75"	-	S1/4-28X1/4	29
S7506-0312-6.00	5/16"	6.00"	-	-	0.75"	-	S5/16-24X1/4	29
S1006-0375-6.00	3/8"	6.00"	-	-	1.00"	-	S3/8-24X5/16	29
S1006-0500-6.00	1/2"	6.00"	-	-	1.00"	-	S1/4-28x1/4 (2)	30

Note: Set Screws are included.



Set Screws  
Page 173



Retention  
Knobs  
Page 267



Tool  
Clampers  
Page 274

# END MILL HOLDERS



## END MILL HOLDER ACCESSORIES

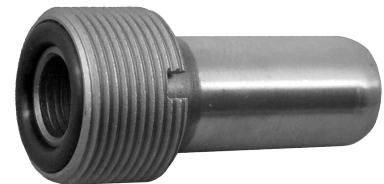
### REPLACEMENT SET SCREWS FOR END MILL HOLDERS

Part Number	Size of Holder Internal Diameter
S6-32X1/4	1/8"
S8-32X1/4	3/16"
S1/4-28x1/4	1/4", 6mm
S5/16-24X1/4	5/16", 8mm
S3/8-24X5/16	3/8", 10mm
S7/16-20X3/8	7/16", 1/2", 12mm
S9/16-18X1/2	5/8", 14-16mm
S5/8-18X1/2	3/4", 7/8", 18-20mm
S3/4-16X11/16	1", 1-1/4", 1-1/2", 25-42mm
S1-14x7/8	2", 2-1/2"



### COOLANT TUBE FOR HSK HOLDERS

Part Number	Description
HSK40-TUBE	HSK40 Coolant Tube
HSK63-TUBE	HSK63 Coolant Tube
HSK100-TUBE	HSK100 Coolant Tube
C4-TUBE	C4 Coolant Tube
C5-TUBE	C5 Coolant Tube
C6-TUBE	C6 Coolant Tube
C8-TUBE	C8 Coolant Tube



### COOLANT TUBE WRENCH FOR HSK HOLDERS

Part Number	Description
HSK40-WRENCH	Wrench for HSK40 Coolant Tube
HSK63-WRENCH	Wrench for HSK63 Coolant Tube
HSK100-WRENCH	Wrench for HSK100 Coolant Tube
C4-WRENCH	Wrench for C4 Coolant Tube
C5-WRENCH	Wrench for C5 Coolant Tube
C6-WRENCH	Wrench for C6 Coolant Tube
C8-WRENCH	Wrench for C8 Coolant Tube



*Note: Coolant tube wrenches are needed to remove or install coolant tubes in HSK toolholders.*

# YOUR CNC ROTARY TABLE SOLUTION

Heat Treated and Ion Nitrided Steel Worm Wheel greatly increases wear resistance and reduces backlash adjustment

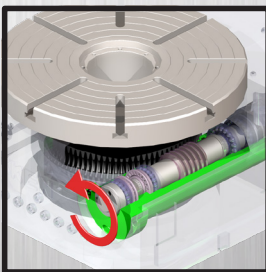
Extreme rigidity, concentricity and precision with 4 arc second repeatability

Compact design to fit any CNC machining center

Patented Solid Carbide Worm Screw, thread ground for extreme accuracy and precision

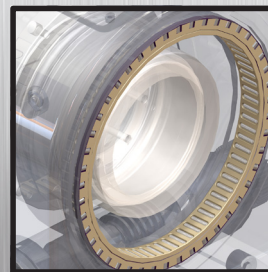
## REDUCED SETUPS, INCREASED PRODUCTIVITY, *PROFITS IN YOUR POCKET!*

### ROTARY TABLE FEATURES:



#### Unique Faceplate and Worm Wheel Assembly

- Unique shrunk fit worm wheel design onto solid faceplate and quill body for high precision concentricity
- Shorter distance from faceplate to gear allows for greater torsional forces to be sustained



#### Independent Tubular Thrust and Radial Bearings

- Custom paired and matched for every rotary table
- Provide vibration dampening and internal gear protection
- Extreme rigidity and concentric accuracy from needle roller bearings



847-367-4800 | [sales@lyndexnikken.com](mailto:sales@lyndexnikken.com)  
[lyndexnikken.com](http://lyndexnikken.com)

Connect With Us!

