

SHELL MILL HOLDERS



SHELL MILL HOLDERS



SHELL MILL & FACE MILL HOLDER FEATURES

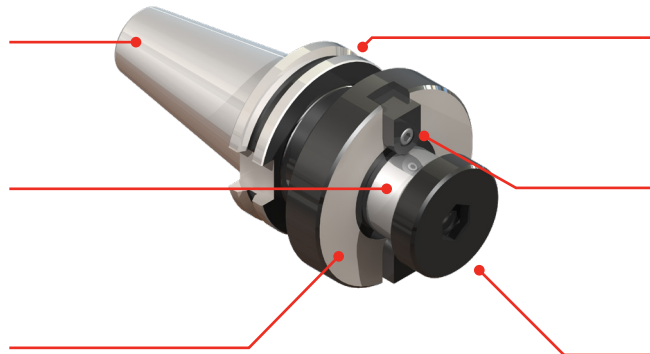
Our Shell Mill Holders are available in a wide variety of tapers and sizes, including CAT, BT, HSK, and R8. Both metric and inch sizes are available, accommodating face mills with pilot diameters ranging from 1/2" (12mm) to 2-1/2" (50mm).

Shell Mill Holder

Taper ground to AT3 or better to ensure 80% taper contact

h6 precision ground pilot for concentric and repeatable mounting of shell mill

Surface ground to maintain .0002" perpendicularity to centerline ensuring flat engagement of shell mill

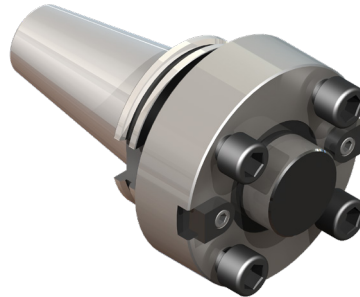


Made from low alloy steel SAE8620/20MnCr5

Keys included as standard for quick set up

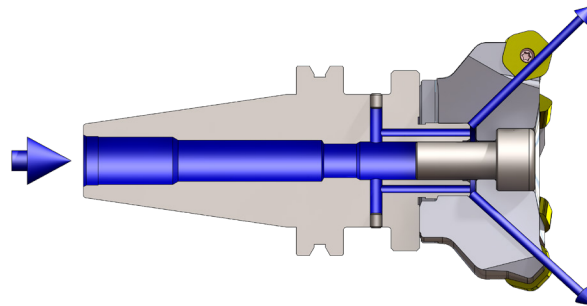
Heat-treated carbon steel nut prevents wear and increases clamping pressure

Face Mill Holder



Coolant-Thru Applications

For Coolant-Thru Shell Mills and Face Mills



Our shell mill and face mill holders come standard with coolant ports.

SHELL MILL HOLDERS



CAT SHELL MILL HOLDERS

- Accommodates face mills with pilot diameters ranging from 1/2" (12mm) to 2" (40mm)
- Pilot diameter sized for precision fit with cutter
- Removable/replaceable drive keys as standard
- Fine thread locking screw included
- AT3 or better taper



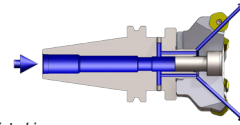
T.I.R.
 <.0004" run out at pilot



Coolant-Thru
 Thru-pilot (standard)



Speed
 Up to 20,000 rpm



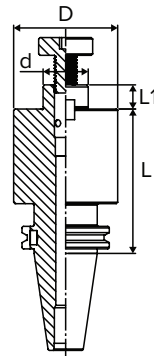
MILLING



Please note that the maximum RPM listed in our catalog may vary depending on the toolholder shank, weight, balanceability and the G rating.

CAT40 - INCH

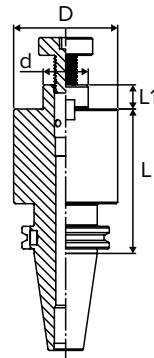
Part Number	d	L	D	L1	Key Size	Arbor Thread
C4001-0500-1.75CP	1/2"	1.75"	1.38"	0.57"	1/4"	1/4"-28
C4001-0750-1.75CP	3/4"	1.75"	1.93"	0.67"	5/16"	3/8"-24
C4001-0750-4.00CP	3/4"	4.00"	1.93"	0.67"	5/16"	3/8"-24
C4001-1000-1.75CP	1"	1.75"	2.38"	0.67"	3/8"	1/2"-20
C4001-1000-4.00CP	1"	4.00"	2.38"	0.67"	3/8"	1/2"-20
C4001-1250-2.00CP	1-1/4"	2.00"	2.88"	0.67"	1/2"	5/8"-18
C4001-1250-4.00CP	1-1/4"	4.00"	2.88"	0.67"	1/2"	5/8"-18
C4001-1500-2.00CP	1-1/2"	2.00"	2.88"	0.93"	5/8"	3/4"-16
C4001-1500-4.00CP	1-1/2"	4.00"	2.88"	0.93"	5/8"	3/4"-16



Available in **TAPER PLUS+**
 Dual-taper and flange contact

CAT50 - INCH

Part Number	d	L	D	L1	Key Size	Arbor Thread
C5001-0750-1.75CP	3/4"	1.75"	1.93"	0.67"	5/16"	3/8"-24
C5001-0750-4.00CP	3/4"	4.00"	1.93"	0.67"	5/16"	3/8"-24
C5001-0750-6.00CP	3/4"	6.00"	1.93"	0.67"	5/16"	3/8"-24
C5001-0750-8.00CP	3/4"	8.00"	1.93"	0.67"	5/16"	3/8"-24
C5001-1000-1.75CP	1"	1.75"	2.38"	0.69"	3/8"	1/2"-20
C5001-1000-4.00CP	1"	4.00"	2.38"	0.69"	3/8"	1/2"-20
C5001-1000-6.00CP	1"	6.00"	2.38"	0.69"	3/8"	1/2"-20
C5001-1000-8.00CP	1"	8.00"	2.38"	0.69"	3/8"	1/2"-20
C5001-1250-1.75CP	1-1/4"	1.75"	2.88"	0.69"	1/2"	5/8"-18
C5001-1250-4.00CP	1-1/4"	4.00"	2.88"	0.69"	1/2"	5/8"-18
C5001-1250-6.00CP	1-1/4"	6.00"	2.88"	0.69"	1/2"	5/8"-18
C5001-1250-8.00CP	1-1/4"	8.00"	2.88"	0.69"	1/2"	5/8"-18
C5001-1500-2.00CP	1-1/2"	2.00"	2.88"	0.93"	5/8"	3/4"-16
C5001-1500-4.00CP	1-1/2"	4.00"	2.88"	0.93"	5/8"	3/4"-16
C5001-1500-6.00CP	1-1/2"	6.00"	2.88"	0.93"	5/8"	3/4"-16
C5001-1500-8.00CP	1-1/2"	8.00"	2.88"	0.93"	5/8"	3/4"-16
C5001-2000-2.00CP	2"	2.00"	4.38"	0.93"	3/4"	1"-14
C5001-2000-4.00CP	2"	4.00"	4.38"	0.93"	3/4"	1"-14
C5001-2000-6.00CP	2"	6.00"	4.38"	0.93"	3/4"	1"-14



Available in **TAPER PLUS+**
 Dual-taper and flange contact



Replacement Keys
 Page 188

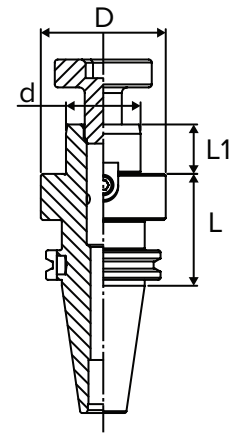


Replacement Arbor Screws
 Page 188

CAT SHELL/FACE MILL HOLDERS

CAT40 - METRIC

Part Number	d	L	D	L1	Key Size	Arbor Thread
C4001-22-50CP	22mm	50mm	40mm	19mm	10mm	M10
C4001-27-50CP	27mm	50mm	48mm	21mm	12mm	M12
C4001-32-50CP	32mm	50mm	58mm	24mm	14mm	M16
C4001-40-60CP	40mm	60mm	67mm	27mm	16mm	M20



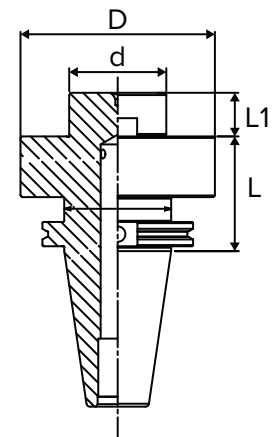
CAT50 - METRIC

Part Number	d	L	D	L1	Key Size	Arbor Thread
C5001-22-60CP	22mm	60mm	40mm	19mm	10mm	M10
C5001-27-60CP	27mm	60mm	48mm	21mm	12mm	M12
C5001-32-60CP	32mm	60mm	58mm	24mm	14mm	M16
C5001-40-60CP	40mm	60mm	67mm	27mm	16mm	M20

CAT50 - INCH FACE MILL HOLDERS

Part Number	d	L	D	L1	Key Size
C50F1-2000-2.95CP	2"	2.95"	5.06"	0.86"	3/4"
C50F1-2500-2.95CP	2-1/2"	2.95"	5.00"	1.14"	1"

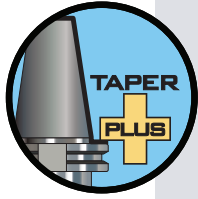
Note: Face Mill Holders are supplied with four 5/8-11 mounting bolts. Pitch circle diameter is 4".



SHELL MILL HOLDERS

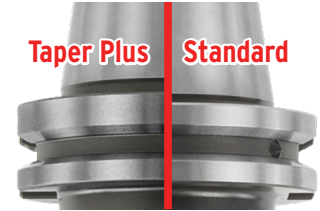
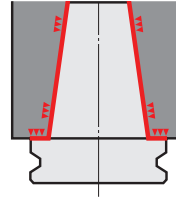


TAPER PLUS CAT - SHELL MILL HOLDERS



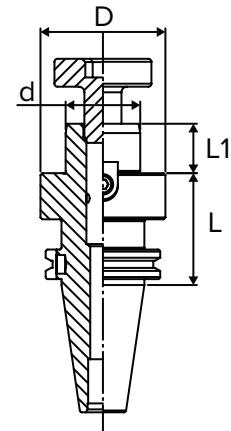
Taper Plus Advantages

- Outstanding runout accuracy for longer tool life
- Vibration dampening for increased productivity
- High rigidity for smooth and stable cutting
- Interchangeable between standard and dual face contact spindles
- 53% more surface area contact than just the taper alone



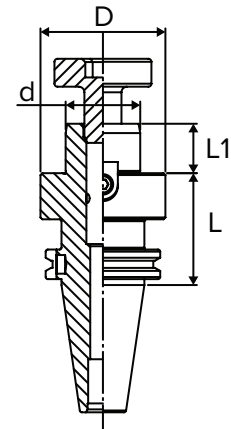
TAPER PLUS - CAT40 - INCH

Part Number	d	L	D	L1	Key Size	Arbor Thread
NC4001-0500-1.75CP	1/2"	1.75"	1.38"	0.57"	1/4"	1/4"-28
NC4001-0750-1.75CP	3/4"	1.75"	1.93"	0.67"	5/16"	3/8"-24
NC4001-0750-4.00CP	3/4"	4.00"	1.93"	0.67"	5/16"	3/8"-24
NC4001-1000-1.75CP	1"	1.75"	2.39"	0.67"	3/8"	1/2"-20
NC4001-1000-4.00CP	1"	4.00"	2.39"	0.67"	3/8"	1/2"-20
NC4001-1250-2.00CP	1-1/4"	2.00"	2.89"	0.67"	1/2"	5/8"-18
NC4001-1250-4.00CP	1-1/4"	4.00"	2.89"	0.67"	1/2"	5/8"-18
NC4001-1500-2.00CP	1-1/2"	2.00"	3.80"	0.93"	5/8"	3/4"-16



TAPER PLUS - CAT50 - INCH

Part Number	d	L	D	L1	Key Size	Arbor Thread
NC5001-0750-1.75CP	3/4"	1.75"	1.93"	0.67"	5/16"	3/8"-24
NC5001-0750-4.00CP	3/4"	4.00"	1.93"	0.67"	5/16"	3/8"-24
NC5001-0750-6.00CP	3/4"	6.00"	1.93"	0.67"	5/16"	3/8"-24
NC5001-0750-8.00CP	3/4"	8.00"	1.93"	0.67"	5/16"	3/8"-24
NC5001-1000-1.75CP	1"	1.75"	2.39"	0.69"	3/8"	1/2"-20
NC5001-1000-4.00CP	1"	4.00"	2.39"	0.69"	3/8"	1/2"-20
NC5001-1000-6.00CP	1"	6.00"	2.39"	0.69"	3/8"	1/2"-20
NC5001-1000-8.00CP	1"	8.00"	2.39"	0.69"	3/8"	1/2"-20
NC5001-1250-1.75CP	1-1/4"	1.75"	2.89"	0.69"	1/2"	5/8"-18
NC5001-1250-6.00CP	1-1/4"	6.00"	3.80"	0.69"	1/2"	5/8"-18
NC5001-1250-8.00CP	1-1/4"	8.00"	3.80"	0.69"	1/2"	5/8"-18
NC5001-1500-2.00CP	1-1/2"	2.00"	3.80"	0.93"	5/8"	3/4"-16
NC5001-1500-4.00CP	1-1/2"	4.00"	3.80"	0.93"	5/8"	3/4"-16
NC5001-1500-6.00CP	1-1/2"	6.00"	3.80"	0.93"	5/8"	3/4"-16
NC5001-1500-8.00CP	1-1/2"	8.00"	3.80"	0.93"	5/8"	3/4"-16
NC5001-2000-2.00CP	2"	2.00"	4.39"	0.93"	3/4"	1"-14

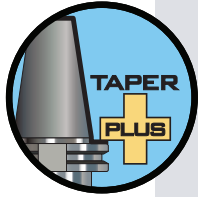


Replacement Keys
Page 188



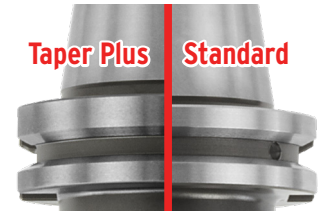
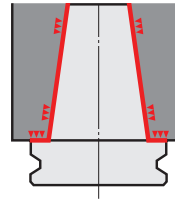
Replacement Arbor Screws
Page 188

TAPER PLUS CAT - FACE/SHELL MILL HOLDERS



Taper Plus Advantages

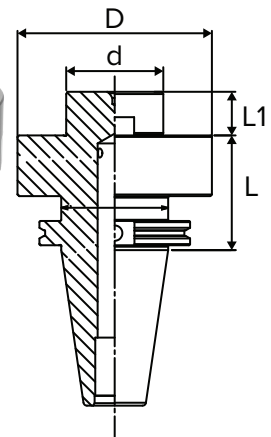
- Outstanding runout accuracy for longer tool life
- Vibration dampening for increased productivity
- High rigidity for smooth and stable cutting
- Interchangeable between standard and dual face contact spindles
- 53% more surface area contact than just the taper alone



TAPER PLUS - CAT50 - INCH FACE MILL HOLDERS

Part Number	d	L	D	Key Size
NC50F1-2000-4.00CP	2"	4.00"	5.06"	3/4"
NC50F1-2500-2.95CP	2-1/2"	2.95"	5.00"	1"

Note: Face Mill Holders are supplied with four 5/8-11 mounting bolts. Pitch circle diameter is 4".



TAPER PLUS - CAT50 - METRIC

Part Number	d	L	D	L1	Key Size	Arbor Thread
NC5001-22-60CP	22mm	60mm	40mm	19mm	10mm	M10
NC5001-27-60CP	27mm	60mm	48mm	21mm	12mm	M12
NC5001-32-60CP	32mm	60mm	58mm	24mm	14mm	M16
NC5001-40-60CP	40mm	60mm	67mm	27mm	16mm	M20



SHELL MILL HOLDERS



BT SHELL MILL HOLDERS

- Accommodates face mills with pilot diameters ranging from 1/2" (12mm) to 1-1/2" (40mm)
- Pilot diameter sized for precision fit with cutter
- Removable/replaceable drive keys as standard
- Fine thread locking screw included
- AT3 or better taper



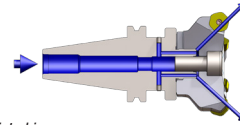
T.I.R.
<.0004" run out at pilot



Coolant-Thru
Thru-pilot (standard)



Speed
Up to 20,000 rpm



MILLING



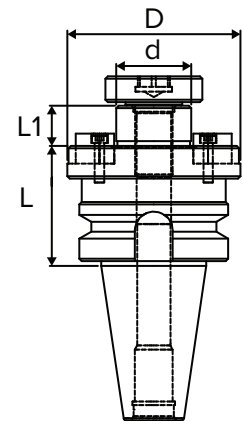
Please note that the maximum RPM listed in our catalog may vary depending on the toolholder shank, weight, balanceability and the G rating.

BT30 - INCH

Part Number	d	L	D	L1	Key Size	Arbor Thread
B3001-0500-1.19CP	1/2"	1.19"	1.38"	0.57"	1/4"	1/4"-28
B3001-0750-1.19CP	3/4"	1.19"	2.00"	0.67"	5/16"	3/8"-24
B3001-1000-1.19CP	1"	1.19"	2.38"	0.67"	3/8"	1/2"-20



Available in **TAPER PLUS+**
Dual-taper and flange contact



BT40 - INCH

Part Number	d	L	D	L1	Key Size	Arbor Thread
B4001-0500-1.75CP	1/2"	1.75"	1.38"	0.57"	1/4"	1/4"-28
B4001-0750-1.75CP	3/4"	1.75"	1.93"	0.67"	5/16"	3/8"-24
B4001-1000-1.75CP	1"	1.75"	2.38"	0.67"	3/8"	1/2"-20
B4001-1500-2.00CP	1-1/2"	2.00"	3.80"	0.92"	5/8"	3/4"-16

BT40 - METRIC

Part Number	d	L	D	L1	Key Size	Arbor Thread
B4001-22-50	22mm	50mm	40mm	19mm	10mm	M10
B4001-27-50	27mm	50mm	48mm	21mm	12mm	M12
B4001-32-50	32mm	50mm	58mm	24mm	14mm	M16
B4001-40-60	40mm	60mm	67mm	27mm	16mm	M20



Replacement Keys
Page 188

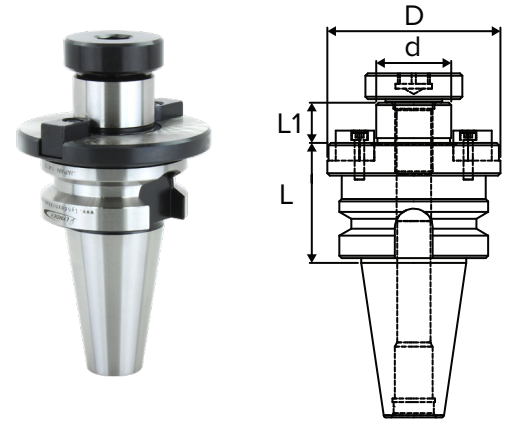


Replacement Arbor Screws
Page 188

BT SHELL/FACE MILL HOLDERS

BT50 - INCH

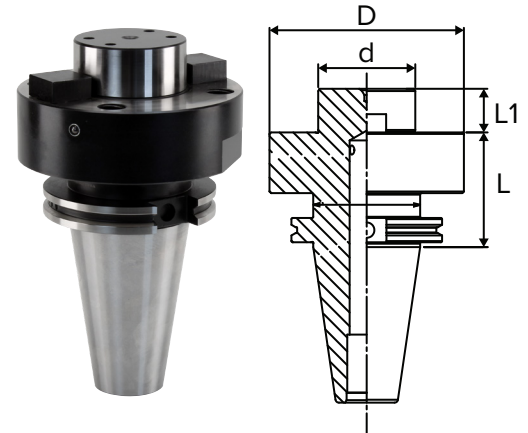
Part Number	d	L	D	L1	Key Size	Arbor Thread
B5001-0750-1.75CP	3/4"	1.75"	1.93"	0.67"	5/16"	3/8"-24
B5001-1000-1.75CP	1"	1.75"	2.38"	0.68"	3/8"	1/2"-20
B5001-1000-4.00CP	1"	4.00"	2.38"	0.69"	3/8"	1/2"-20
B5001-1000-6.00CP	1"	6.00"	2.38"	0.69"	3/8"	1/2"-20
B5001-1250-2.00CP	1-1/4"	2.00"	2.38"	0.68"	1/2"	5/8"-18
B5001-1500-2.00CP	1-1/2"	2.00"	2.38"	0.68"	5/8"	3/4"-16
B5001-1500-6.00CP	1-1/2"	6.00"	3.80"	0.94"	5/8"	3/4"-16
B5001-2000-2.00CP	2"	2.00"	3.80"	0.92"	3/4"	1"-14



BT50 - INCH FACE MILL HOLDERS

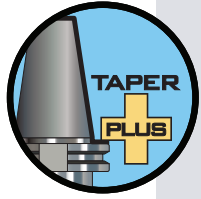
Part Number	d	L	D	L1	Key Size
B50F1-2500-3.00	2-1/2"	3.00"	5.00"	1.18"	1"

Note: Face Mill Holders are supplied with four 5/8-11 mounting bolts. Pitch circle diameter is 4".



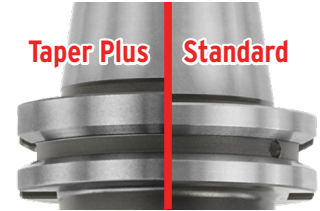
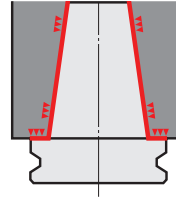
SHELL MILL HOLDERS

TAPER PLUS BT - SHELL MILL HOLDERS



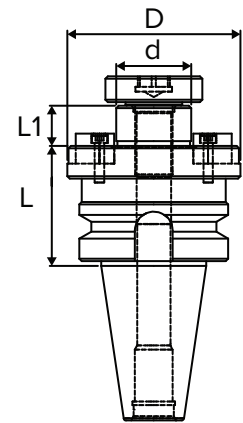
Taper Plus Advantages

- Outstanding runout accuracy for longer tool life
- Vibration dampening for increased productivity
- High rigidity for smooth and stable cutting
- Interchangeable between standard and dual face contact spindles
- 53% more surface area contact than just the taper alone



TAPER PLUS - BT30

Part Number	d	L	D	L1	Key Size	Arbor Thread
NB3001-0750-1.19CP	3/4"	1.19"	1.93"	0.67"	5/16"	3/8"-24
NB3001-1000-1.19CP	1"	1.19"	2.39"	0.67"	3/8"	1/2"-20



TAPER PLUS - BT40

Part Number	d	L	D	L1	Key Size	Arbor Thread
NB4001-0750-1.75CP	3/4"	1.75"	1.93"	0.67"	5/16"	3/8"-24
NB4001-1000-1.75CP	1"	1.75"	2.39"	0.67"	3/8"	1/2"-20
NB4001-1250-2.00CP	1-1/4"	2.00"	2.88"	0.67"	1/2"	5/8"-18
NB4001-1500-2.00CP	1-1/2"	2.00"	3.80"	0.92"	5/8"	3/4"-16



Replacement Keys
Page 188



Replacement Arbor Screws
Page 188

HSK SHELL MILL HOLDERS

- Accommodates face mills with pilot diameters ranging from 3/4" to 1-1/2"
- Pilot diameter sized for precision fit with cutter
- Removable/replaceable drive keys as standard
- Fine thread locking screw included
- AT3 or better taper



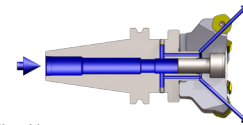
T.I.R.
<.0004" run out at pilot



Coolant-Thru
Thru-pilot (standard)



Speed
Up to 20,000 rpm



MILLING

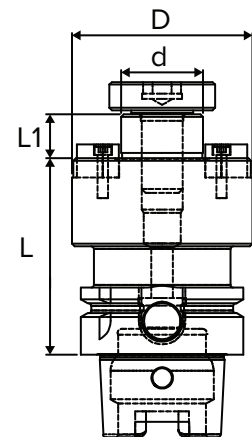


Please note that the maximum RPM listed in our catalog may vary depending on the toolholder shank, weight, balanceability and the G rating.

HSK40A/63A

Part Number	d	L	D	L1	Key Size	Arbor Thread
HSK40A-SM0750-60CP	3/4"	2.36"	2.17"	0.67"	5/16"	3/8"-24
HSK40A-SM1000-60CP	1"	2.36"	2.75"	0.67"	3/8"	1/2"-20
HSK63A-SM0750-3.00CP	3/4"	3.00"	1.69"	0.67"	5/16"	3/8"-24
HSK63A-SM0750-5.00CP	3/4"	5.00"	1.69"	0.67"	5/16"	3/8"-24
HSK63A-SM1000-3.00CP	1"	3.00"	2.17"	0.67"	3/8"	1/2"-20
HSK63A-SM1000-5.00CP	1"	5.00"	2.17"	0.67"	3/8"	1/2"-20
HSK63A-SM1250-3.00CP	1-1/4"	3.00"	2.88"	0.67"	1/2"	5/8"-18
HSK63A-SM1250-5.00CP	1-1/4"	5.00"	3.80"	0.67"	1/2"	5/8"-18

Note: Coolant tube and coolant tube wrench are not included. See page 188 for more details.



HSK100A

Part Number	d	L	D	L1	Key Size	Arbor Thread
HSK100A-SM0750-4.00CP	3/4"	4.00"	1.93"	0.67"	5/16"	3/8"-24
HSK100A-SM0750-6.00CP	3/4"	6.00"	1.93"	0.67"	5/16"	3/8"-24
HSK100A-SM0750-8.00CP	3/4"	8.00"	1.93"	0.67"	5/16"	1/2"-20
HSK100A-SM1000-4.00CP	1"	4.00"	2.17"	0.67"	3/8"	1/2"-20
HSK100A-SM1000-6.00CP	1"	6.00"	2.17"	0.67"	3/8"	1/2"-20
HSK100A-SM1000-8.00CP	1"	8.00"	2.17"	0.67"	3/8"	1/2"-20
HSK100A-SM1250-4.00CP	1-1/4"	4.00"	2.88"	0.67"	1/2"	5/8"-18
HSK100A-SM1250-6.00CP	1-1/4"	6.00"	2.88"	0.67"	1/2"	5/8"-18
HSK100A-SM1250-8.00CP	1-1/4"	8.00"	2.88"	0.67"	1/2"	5/8"-18
HSK100A-SM1500-4.00CP	1-1/2"	4.00"	3.50"	0.91"	5/8"	3/4"-16
HSK100A-SM1500-6.00CP	1-1/2"	6.00"	3.50"	0.91"	5/8"	3/4"-16
HSK100A-SM2000-4.00CP	2"	4.00"	5.00"	0.91"	3/4"	1"-14
HSK100A-SM2000-6.00CP	2"	6.00"	5.00"	0.91"	3/4"	1"-14

Note: Coolant tube and coolant tube wrench are not included. See page 188 for more details.



Replacement Keys
Page 188



Replacement Arbor Screws
Page 188

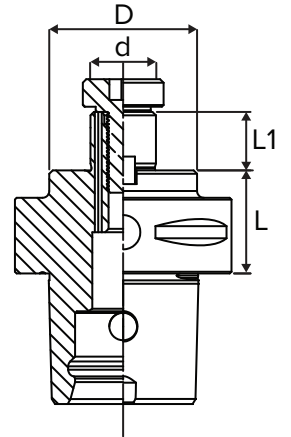
SHELL MILL HOLDERS



POLYGONAL TAPER SHELL MILL HOLDERS

C4/C5/C6/C8 - INCH

Part Number	d	L	D	L1	Key Size	Arbor Thread
C4-SM0750-30CP	3/4"	1.18"	1.69"	0.67"	5/16"	3/8"-24
C4-SM1000-30CP	1"	1.18"	2.17"	0.67"	3/8"	1/2"-20
C5-SM0750-25CP	3/4"	0.98"	1.69"	0.67"	5/16"	3/8"-24
C5-SM1000-25CP	1"	0.98"	2.17"	0.67"	3/8"	3/8"-24
C5-SM1250-40CP	1-1/4"	1.57"	2.76"	0.67"	1/2"	1/2"-20
C6-SM0750-100CP	3/4"	3.94"	1.69"	0.67"	5/16"	5/8"-18
C6-SM0750-30CP	3/4"	1.18"	1.69"	0.67"	5/16"	5/8"-18
C6-SM1000-100CP	1"	3.94"	2.17"	0.67"	3/8"	5/8"-18
C6-SM1000-30CP	1"	1.18"	2.17"	0.67"	3/8"	5/8"-18
C6-SM1250-30CP	1-1/4"	1.18"	2.76"	0.67"	1/2"	5/8"-18
C8-SM0750-30CP	3/4"	1.18"	3.15"	0.67"	5/16"	5/8"-18
C8-SM1000-30CP	1"	1.18"	3.15"	0.67"	3/8"	5/8"-18
C8-SM1250-30CP	1-1/4"	1.18"	3.15"	0.67"	1/2"	5/8"-18



Replacement Keys
Page 188



Replacement Arbor Screws
Page 188

NMTB SHELL MILL HOLDERS

- Accommodates face mills with pilot diameters ranging from 3/4" to 1"
- Pilot diameter sized for precision fit with cutter
- Removable/replaceable drive keys as standard
- Fine thread locking screw included
- AT3 or better taper



T.I.R.
 <.0004" run out at pilot

MILLING

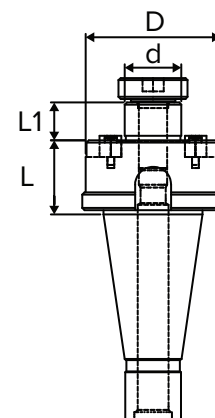


Please note that the maximum RPM listed in our catalog may vary depending on the toolholder shank, weight, balanceability and the G rating.

NMTB30

Part Number	Taper	d	L	D	L1	Key Size	Arbor Thread
N3001-0750-1.31	NMTB30	3/4"	1.31"	2.00"	0.67"	5/16"	3/8"-24
N3001-1000-1.31	NMTB30	1"	1.31"	2.38"	0.67"	3/8"	1/2"-20

Note: NMTB shanks are suitable for use with Erickson Quick Change spindles.



SHELL MILL HOLDERS



R8 SHELL MILL HOLDERS

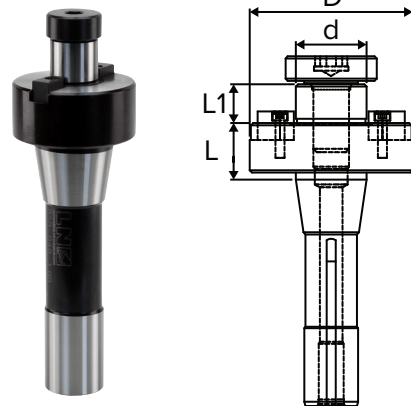
- Accommodates face mills with pilot diameters ranging from 1/2" (12mm) to 1.5" (38.1mm)
- Pilot diameter sized for precision fit with cutter
- Removable/replaceable drive keys as standard
- Fine thread locking screw included



T.I.R.
<.0004" run out at pilot

R8

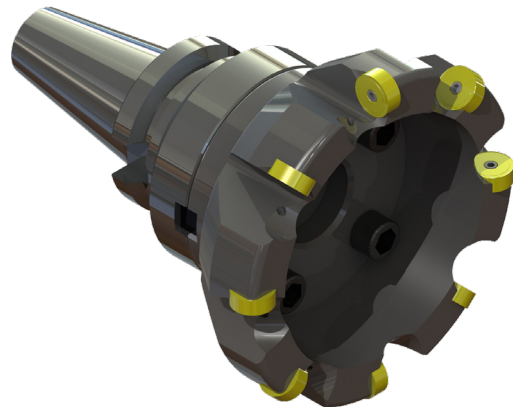
Part Number	Taper	d	L	D	L1	Key Size	Arbor Thread
850-032-1.00	R8	1/2"	0.98"	1.38"	0.57"	1/4"	1/4"-28
850-048-1.00	R8	3/4"	0.98"	2.00"	0.69"	5/16"	3/8"-24
850-064-1.00	R8	1"	0.98"	2.38"	0.69"	3/8"	1/2"-20
850-080-1.00	R8	1-1/4"	0.98"	2.88"	0.69"	1/2"	5/8"-18
850-096-1.75	R8	1-1/2"	1.75"	3.50"	0.94"	5/8"	3/4"-16



Lyndex-Nikken Offers Single and Dual Plane Balancing for Large Diameter or Long Tooling Assemblies

Benefits of Shell Mill Holder Balancing:

- Balanced assemblies can reduce spindle vibration— prolonging the life of your cutting tools and spindle.
- Increase the quality and consistency of machined surface finishes.
- Achieves greater machined surface flatness.
- Balancing service is only required once during initial set up. Assembly balance is maintained until shell mill/face mill is removed.



Contact Lyndex-Nikken for more information



Replacement Keys
Page 188



Replacement Arbor Screws
Page 188

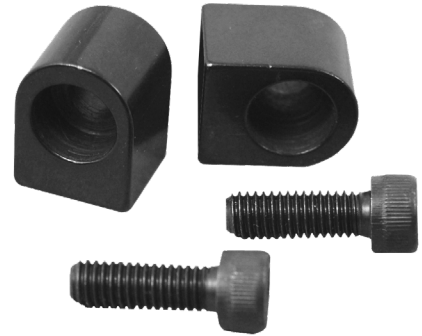
SHELL MILL HOLDERS



SHELL MILL HOLDER ACCESSORIES

REPLACEMENT KEYS

Part Number	Description	To Use with Holder Size
1/2-KEYSET	1/4" rotating pins (2 Pcs.)	1/2"
3/4-KEYSET	5/16" keys with screws (2 Pcs.)	3/4"
1-KEYSET	3/8" keys with screws (2 Pcs.)	1"
1-1/4-KEYSET	1/2" keys with screws (2 Pcs.)	1-1/4"
1-1/2-KEYSET	5/8" keys with screws (2 Pcs.)	1-1/2"
2-KEYSET	3/4" keys with screws (2 Pcs.)	2"
2-1/2-KEYSET	1" keys with screws (2 Pcs.)	2-1/2"
22-KEYSET	10mm keys with screws (2 Pcs.)	22mm
27-KEYSET	12mm keys with screws (2 Pcs.)	27mm
32-KEYSET	14mm keys with screws (2 Pcs.)	32mm
40-KEYSET	16mm keys with screws (2 Pcs.)	40mm



REPLACEMENT ARBOR SCREWS

Part Number	Head Diameter	Head Thickness	For the Following Shell/ Face Mill Sizes
A5/8-11	23.65mm (0.931")	15.7mm (0.618")	Face Mill Mounting Bolt
A1/4-28	17mm (0.669")	6mm (0.236")	1/2"
A3/8-24	23.5mm (0.925")	8mm (0.315")	3/4"
A1/2-20	31mm (1.220")	9.5mm (0.374")	1"
A5/8-18	41mm (1.614")	11mm (0.433")	1-1/4"
A3/4-16	49mm (1.929")	12.7mm (0.500")	1-1/2"
A1-14	68mm (2.677")	18mm (0.709")	2"
FM10	28mm (1.102")	9mm (0.354")	22mm
FM12	35mm (1.378")	9mm (0.354")	27mm
FM16	42mm (1.653")	12mm (0.472")	32mm
FM20	52mm (2.047")	15mm (0.590")	40mm



COOLANT TUBE WRENCHES FOR HSK HOLDERS/ POLYGON SHELL MILL HOLDERS

Part Number	Description
HSK40-WRENCH	Wrench for HSK40 Coolant Tube
HSK63-WRENCH	Wrench for HSK63 Coolant Tube
HSK100-WRENCH	Wrench for HSK100 Coolant Tube
C4-WRENCH	Wrench for C4 Coolant Tube
C5-WRENCH	Wrench for C5 Coolant Tube
C6-WRENCH	Wrench for C6 Coolant Tube
C8-WRENCH	Wrench for C8 Coolant Tube



Coolant tube wrenches are needed to remove or install coolant tubes in HSK/Polygon Shell toolholders.

COOLANT TUBES FOR HSK HOLDERS/ POLYGON SHELL MILL HOLDERS

Part Number	Description
HSK40-TUBE	HSK40 Coolant Tube
HSK63-TUBE	HSK63 Coolant Tube
HSK100-TUBE	HSK100 Coolant Tube
C4-TUBE	C4 Coolant Tube
C5-TUBE	C5 Coolant Tube
C6-TUBE	C6 Coolant Tube
C8-TUBE	C8 Coolant Tube

