

TG/DA COLLET CHUCKS



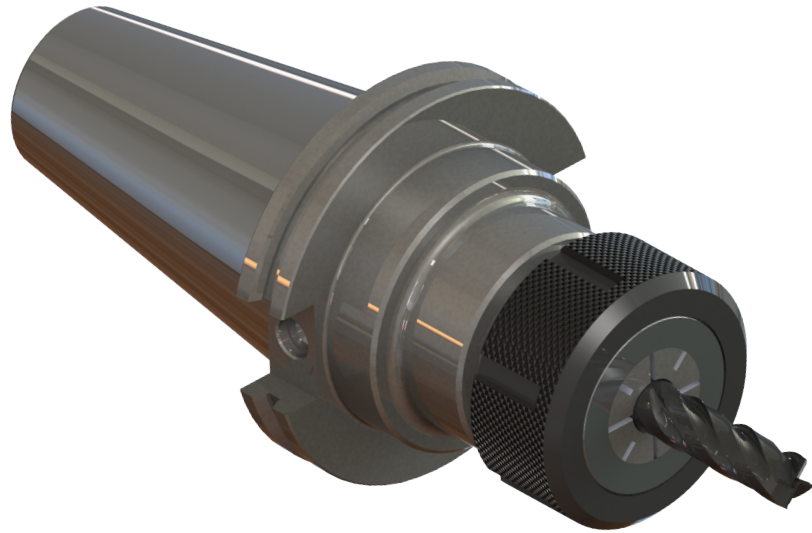
TG/DA COLLET CHUCKS

TG/DA COLLET CHUCKS



TG COLLET CHUCK FEATURES

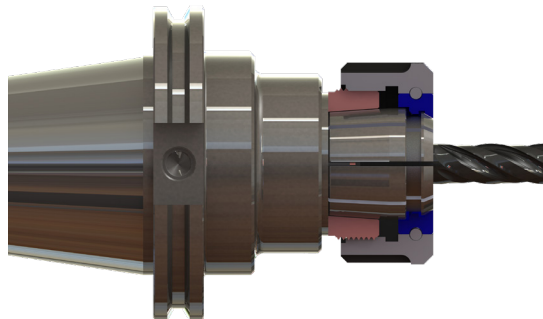
- Made from low-alloy steel SAE8620/20MnCr5
- Heat treated to 56-60 HRc
- Lyndex-Nikken TG holders provide great rigidity
- Tapers are ground to AT3 standards or better



- All Lyndex-Nikken TG Collet Chucks come standard with bearing nuts
- Bearing Nuts reduce collet twisting, maintaining repeatability of accuracy
- Improves T.I.R. to wear cutting tools evenly



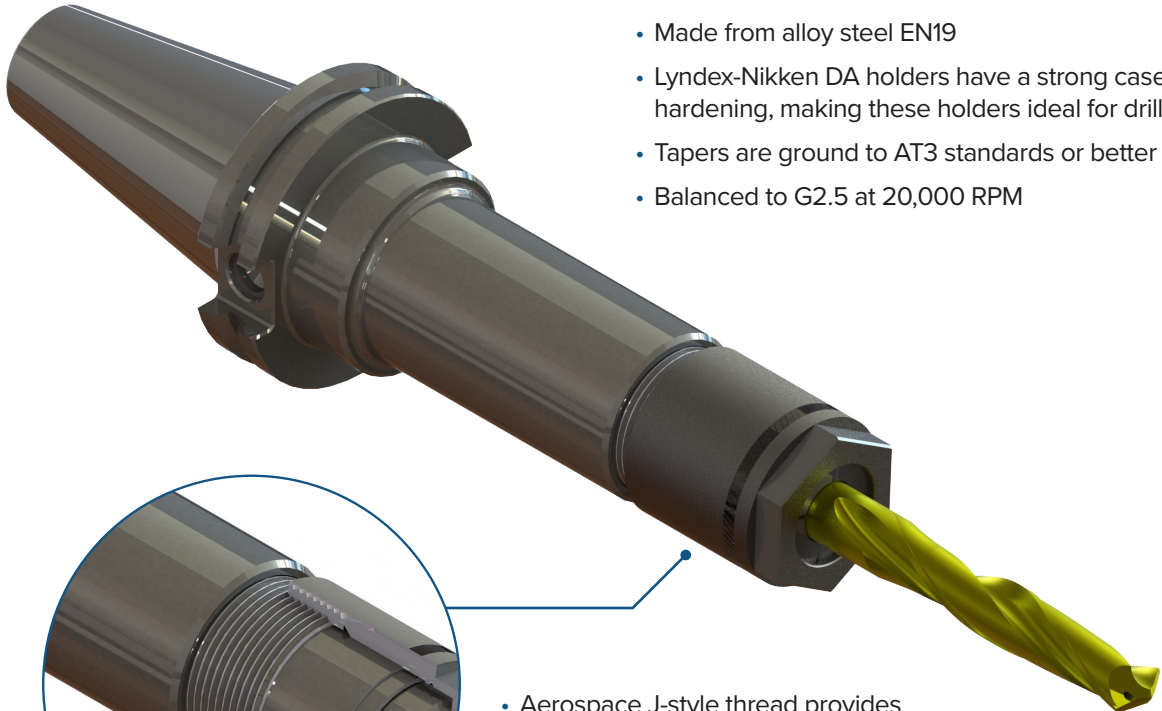
- Made from Spring Steel, heat treated and CNC slotted to maintain precision ID bore cylindricity
- Available in standard and high pressure coolant-thru capable style collets. Coolant collets are steel sealed and mechanically sealed by design.



- 8 degree included collet angle allows high precision and greater clamping torque than 16 degree ER collet chucks

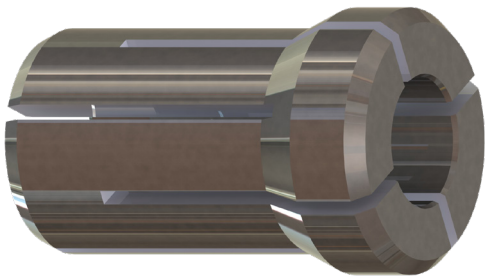


DA COLLET CHUCK FEATURES

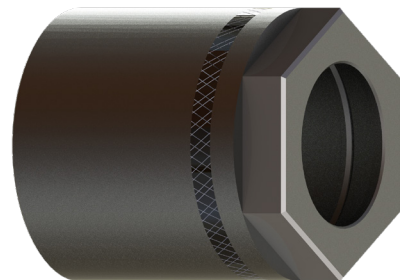


- Made from alloy steel EN19
- Lyndex-Nikken DA holders have a strong case hardening, making these holders ideal for drilling
- Tapers are ground to AT3 standards or better
- Balanced to G2.5 at 20,000 RPM

- Aerospace J-style thread provides smooth torque transmission between the nut and the holder, giving Lyndex-Nikken DA Collet Chucks high clamping torque.



- Made from Spring Steel
- Heat treated and stress relieved for optimal hardness and flexibility
- Precision ground and slotted



- Made from Spring Steel
- Ground mating surface to collet assures maximum clamping torque to the cutting tool

CAT TG COLLET CHUCKS

FEATURES

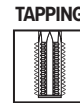
- Perpendicular contact between retention knob and holder
- AT3 or better taper



T.I.R.
<.0002" at collet face



Speed
Up to 20,000 rpm

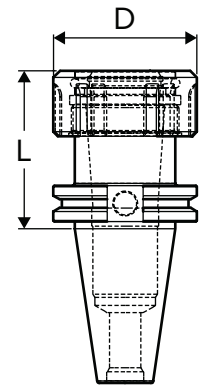


Please note that the maximum RPM listed in our catalog may vary depending on the toolholder shank, weight, balanceability and the G rating.

CAT40

Part Number	Style	Collet Series	Collet Range	Nut Wrench	L	L2	Max. RPM
C4007-0750-3.00	Stubby	75TG	3/64-3/4"	75TG-SPAN	3.00"	1.89"	20K
C4007-1000-2.75	Stubby	100TG	3/64-1"	100TG-SPAN	2.76"	2.50"	20K
C4007-1000-3.50	Standard	100TG	3/64-1"	100TG-SPAN	3.50"	2.50"	20K
C4007-1000-5.50	Standard	100TG	3/64-1"	100TG-SPAN	5.51"	2.50"	20K

TG Collet Chucks come with back-up screw.

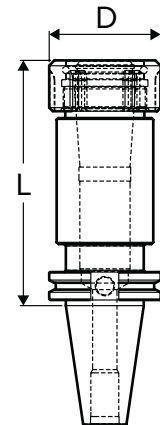


Stubby

CAT50

Part Number	Style	Collet Series	Collet Range	Nut Wrench	L	D	Max. RPM
C5007-1000-3.50	Standard	100TG	3/64-1"	100TG-SPAN	3.50"	2.50"	20K
C5007-1000-5.50	Standard	100TG	3/64-1"	100TG-SPAN	5.50"	2.50"	20K
C5007-1000-7.50	Standard	100TG	3/64-1"	100TG-SPAN	7.50"	2.50"	20K
C5007-1000-10.00	Standard	100TG	3/64-1"	100TG-SPAN	10.00"	2.50"	20K

TG Collet Chucks come with back-up screw.



Standard

Toolholder Assembly Procedure

To use: first insert the collet into the chuck nut by squeezing the collet and pressing its face into the chuck nut's retaining ring until the collet's collar is fully seated. Then load the assembly into the chuck, insert a cutting tool, and tighten with the appropriate nut wrench to the recommended tightening torque.

To remove: simply squeeze the collet while pulling it from the chuck nut at an angle.

When removing the back-up screw, TG Collet Chucks have coolant-thru capabilities. No disc, special nut or wrench required!

See TG Coolant Collets on pages 233-235.



TG/DA COLLET CHUCKS



BT TG COLLET CHUCKS

FEATURES

- Perpendicular contact between retention knob and holder
- AT3 or better taper



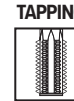
T.I.R.
<.0002" at collet face



Speed
Up to 20,000 rpm



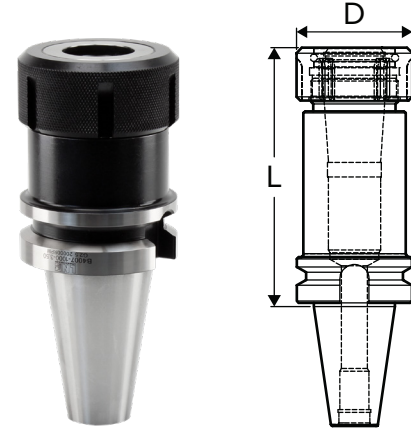
Coolant-Thru
Thru-tool coolant



Please note that the maximum RPM listed in our catalog may vary depending on the toolholder shank, weight, balanceability and the G rating.

BT30/40/50

Part Number	Style	Collet Series	Collet Range	Nut Wrench	L	D	Max. RPM
B3007-0750-2.50	BT30	75TG	3/64-3/4"	75TG-SPAN	2.50"	1.89"	20K
B3007-1000-3.94	BT30	100TG	3/64-1"	100TG-SPAN	3.94"	2.50"	20K
B4007-0750-3.00	BT40	75TG	3/64-3/4"	75TG-SPAN	3.00"	1.89"	20K
B4007-1000-3.50	BT40	100TG	3/64-1"	100TG-SPAN	3.50"	2.50"	20K
B5007-1000-3.50	BT50	100TG	3/64-1"	100TG-SPAN	3.50"	2.50"	20K
B4017-1000-5.50	BT50	100TG	3/64-1"	100TG-SPAN	5.50"	2.50"	20K



TG Collet Chucks come with back-up screw.

TG/DA COLLET CHUCKS

Toolholder Assembly Procedure

To use: first insert the collet into the chuck nut by squeezing the collet and pressing its face into the chuck nut's retaining ring until the collet's collar is fully seated. Then load the assembly into the chuck, insert a cutting tool, and tighten with the appropriate nut wrench to the recommended tightening torque.

To remove: simply squeeze the collet while pulling it from the chuck nut at an angle.

When removing the back-up screw, TG Collet Chucks have coolant-thru capabilities. No disc, special nut or wrench required!

See TG Coolant Collets on pages 233-235



TG Collets
Pages 233-235



TG Torque Wrench
Page 236



TG Back Up Screw
Page 236



TG Nut
Page 236

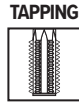
STRAIGHT SHANK TG COLLET CHUCKS



T.I.R.
 <.0002" at collet face



Coolant-Thru
 Thru-tool coolant



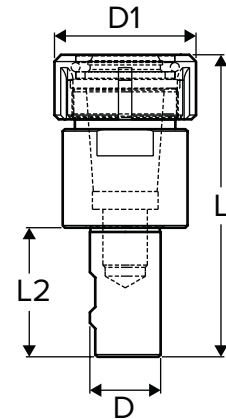
Features of Straight Shank Tooling

- Straight shank tooling may be used to extend tooling reach for extended length operations
- This option is less costly than extended length integral shank tooling
- Can be used on machining centers or lathes
- When loaded into larger holders, their reduced O.D. permits drilling operations within large holes or whenever tight clearances are encountered

STRAIGHT SHANK

Part Number	Collet Series	Collet Range	Nut Wrench	D	L	L2	D1
S1507-1000-9.00	100TG	3/64-1"	100TG-SPAN	2.50"	9.00"	6.00"	2.50"

TG Collet Chucks come with back-up screw.



Toolholder Assembly Procedure

To use: first insert the collet into the chuck nut by squeezing the collet and pressing its face into the chuck nut's retaining ring until the collet's collar is fully seated. Then load the assembly into the chuck, insert a cutting tool, and tighten with the appropriate nut wrench to the recommended tightening torque.

To remove: simply squeeze the collet while pulling it from the chuck nut at an angle.

TG/DA COLLET CHUCKS



TG/DA COLLET CHUCKS

75TG COLLETS

TG standard collets collapse approximately 1/64"

INCH

Size Range: 3/64" - 3/4"

Part Number	Size
075-003	3/64"
075-004	1/16"
075-005	5/64"
075-006	3/32"
075-007	7/64"
075-008	1/8"
075-009	9/64"
075-010	5/32"
075-011	11/64"
075-012	3/16"
075-013	13/64"
075-014	7/32"
075-015	15/64"
075-016	1/4"
075-017	17/64"
075-018	9/32"
075-019	19/64"
075-020	5/16"
075-021	21/64"
075-022	11/32"
075-023	23/64"
075-024	3/8"
075-025	25/64"
075-026	13/32"
075-027	27/64"
075-028	7/16"
075-029	29/64"
075-030	15/32"
075-031	31/64"
075-032	1/2"
075-033	33/64"
075-034	17/32"
075-035	35/64"
075-036	9/16"
075-037	37/64"
075-038	19/32"
075-039	39/64"
075-040	5/8"
075-041	41/64"
075-042	21/32"
075-043	43/64"
075-044	11/16"
075-045	45/64"
075-046	23/32"
075-047	47/64"
075-048	3/4"

INCH - COOLANT-THRU

Size Range: 1/8" - 3/4"

Part Number	Size
-	3/64"
-	1/16"
-	5/64"
-	3/32"
-	7/64"
075-008(C)	1/8"
075-009(C)	9/64"
075-010(C)	5/32"
075-011(C)	11/64"
075-012(C)	3/16"
075-013(C)	13/64"
075-014(C)	7/32"
075-015(C)	15/64"
075-016(C)	1/4"
075-017(C)	17/64"
075-018(C)	9/32"
075-019(C)	19/64"
075-020(C)	5/16"
075-021(C)	21/64"
075-022(C)	11/32"
075-023(C)	23/64"
075-024(C)	3/8"
075-025(C)	25/64"
075-026(C)	13/32"
075-027(C)	27/64"
075-028(C)	7/16"
075-029(C)	29/64"
075-030(C)	15/32"
075-031(C)	31/64"
075-032(C)	1/2"
075-033(C)	33/64"
075-034(C)	17/32"
075-035(C)	35/64"
075-036(C)	9/16"
075-037(C)	37/64"
075-038(C)	19/32"
075-039(C)	39/64"
075-040(C)	5/8"
075-041(C)	41/64"
075-042(C)	21/32"
075-043(C)	43/64"
075-044(C)	11/16"
075-045(C)	45/64"
075-046(C)	23/32"
075-047(C)	47/64"
075-048(C)	3/4"



75TG Collet



75TG Collet - Coolant-Thru

75TG COLLETS SETS

075-SET-12	12 Piece 75TG Collet Set: 1/16" - 3/4" by 1/16ths
075-SET-17	17 Piece 75TG Collet Set: 1/8" - 3/8" by 1/64ths
075-SET-23	23 Piece 75TG Collet Set: 1/16" - 3/4" by 1/32nds
075-SET-27	27 Piece 75TG Collet Set: 3/32" - 1/2" by 1/64ths
075-SET-45	45 Piece 75TG Collet Set: 1/16" - 3/4" by 1/64ths

Notes:

- Our coolant collets seal up to a maximum coolant pressure of 1000 psi.
- Range collapsibility is 0.004 - 0.006" for coolant collet.
- See dimensional data for TG Collets on page 235.

Our coolant collets are designed for use with cylindrical shank tools (no flats). Cutting tool should be inserted the full length of the collet. If these conditions are not met, coolant leakage will result. Coolant collets are steel sealed and mechanically sealed by design.

Notes: Cutter must be inserted the full length of the collet.

TG/DA COLLET CHUCKS



TG/DA COLLET CHUCKS

100TG COLLETS

TG standard collets collapse approximately 1/64"

METRIC

Size Range: 3mm - 26mm

Part Number	Size
100-203	3mm
100-204	4mm
100-205	5mm
100-206	6mm
100-207	7mm
100-208	8mm
100-210	10mm
100-211	11mm
100-212	12mm
100-213	13mm
100-214	14mm
100-216	16mm
100-218	18mm
100-219	19mm
100-220	20mm
100-222	22mm
100-224	24mm
100-225	25mm
100-226	26mm

METRIC - COOLANT-THRU

Size Range: 6mm - 26mm

Part Number	Size
-	-
-	-
-	-
100-206(C)	6mm
100-208(C)	8mm
100-210(C)	10mm
100-212(C)	12mm
100-214(C)	14mm
100-216(C)	16mm
100-218(C)	18mm
100-220(C)	20mm
100-222(C)	22mm
100-224(C)	24mm
100-225(C)	25mm
100-226(C)	26mm



Notes:

- Cutter must be inserted the full length of the collet.
- Our coolant collets seal up to a maximum coolant pressure of 1000 psi.
- Range collapsibility is 0.004 - 0.006" for coolant collet.
- See dimensional data for TG Collets on page 235.

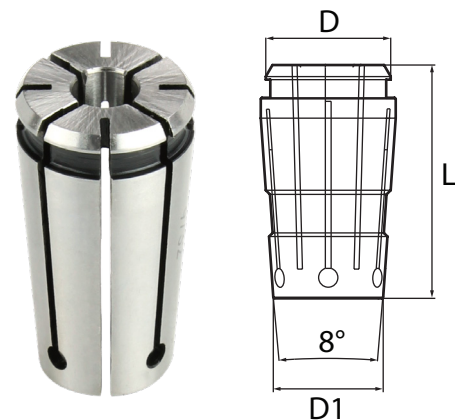
Our coolant collets are designed for use with cylindrical shank tools (no flats). Cutting tool should be inserted the full length of the collet. If these conditions are not met, coolant leakage will result. Coolant collets are steel sealed and mechanically sealed by design.

DIMENSIONAL DATA

Style	D	D1	L	Collet Range	Nut Tightening Torque
75TG	1.063"	0.871"	1.844"	3/64-3/4"	55 ft.lbs
100TG	1.278"	1.121"	2.386"	3/64-1"	75 ft.lbs

Notes:

- Tolerance: Guaranteed to be within 0.0002" at the collet nose.
- Accuracy: Less than 0.0005" at 4 x D.



TG ACCESSORIES

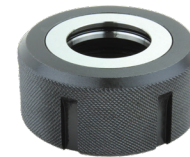
100TG COLLET RACK

Part Number	Description
RACK-5C/100TG/SK25	100TG Collet Rack, 30 piece capacity



REPLACEMENT NUT FOR TG COLLET CHUCK

Part Number	Description
75TG-NUT	75TG Nut
100TG-NUT	100TG Nut



SPANNER WRENCH FOR TG COLLET CHUCK

Part Number	Description
100TG-SPAN	Fits 100TG Collet Chuck Nut



TORQUE WRENCH AND ATTACHMENTS FOR TG COLLET CHUCK

Part Number	Description
TQW-200	Torque Wrench "Handle"
TQW-ER32/SK20/TG75(50)	TG75 Attachment for TQW-200 Torque Wrench
TQW-TG100(65)	100TG Attachment for TQW-200 Torque Wrench



TG/DA COLLET CHUCKS



CAT, BT & NMTB DA COLLET CHUCKS



T.I.R.
Minimal



Speed
Up to 20,000 rpm

REAMING

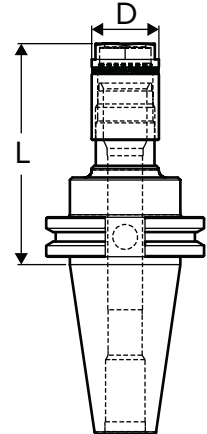


DRILLING



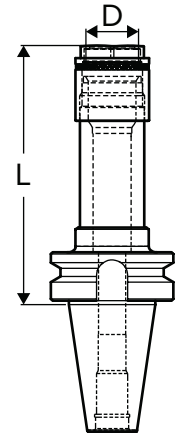
CAT40/50

Part Number	Taper	Collet Series	Collet Range	L	D	Max. RPM
C4007-0100-3.50	CAT40	100DA	3/64 - 9/16"	3.50"	1.06"	20K
C4007-0180-4.00	CAT40	180DA	3/64 - 3/4"	4.00"	1.44"	20K
C4007-0200-3.00	CAT40	200DA	3/64 - 3/8"	3.00"	0.86"	20K
C4007-0300-3.00	CAT40	300DA	3/64 - 1/4"	3.00"	0.55"	20K
C4017-0100-6.00	CAT40	100DA	3/64 - 9/16"	6.00"	1.06"	20K
C4017-0180-6.00	CAT40	180DA	3/64 - 3/4"	6.00"	1.44"	20K
C5017-0180-6.00	CAT50	180DA	3/64 - 3/4"	6.00"	1.44"	20K



BT30/40

Part Number	Taper	Collet Series	Collet Range	L	D	Max. RPM
B3007-0100-3.00	BT30	100DA	3/64 - 9/16"	3.00"	1.06"	20K
B3007-0180-3.00	BT30	180DA	3/64 - 3/4"	3.00"	1.44"	20K
B3007-0200-3.00	BT30	200DA	3/64 - 3/8"	3.00"	0.86"	20K
B3007-0300-3.00	BT30	300DA	3/64 - 1/4"	3.00"	0.55"	20K
B4007-0100-3.50	BT40	100DA	3/64 - 9/16"	3.50"	1.06"	20K
B4007-0180-4.00	BT40	180DA	3/64 - 3/4"	4.00"	1.44"	20K
B4007-0200-3.00	BT40	200DA	3/64 - 3/8"	3.00"	0.86"	20K
B4007-0300-3.00	BT40	300DA	3/64 - 1/4"	3.00"	0.55"	20K
B4017-0100-6.00	BT40	100DA	3/64 - 9/16"	6.00"	1.06"	20K
B4017-0180-6.00	BT40	180DA	3/64 - 3/4"	6.00"	1.44"	20K

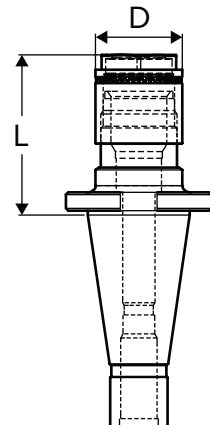


Note: For light or medium milling, we recommend using ER or TG Collet Chucks. DA Collet Chucks are not designed for milling and can crack at the nose when overtightened or radial load is applied. Product warranty does not apply against cracking of collet, toolholder, or collet nut.

NMTB30

Part Number	Taper	Collet Series	Collet Range	L	D	Max. RPM
N3007-0100-2.75	NMTB30	100DA	3/64-9/16"	2.75"	1.06"	20K
N3007-0200-2.50	NMTB30	200DA	3/64-3/8"	2.50"	0.86"	20K

NMTB shanks are suitable for use with Erickson Quick Change spindles.



DA Collets
Pages 239-40

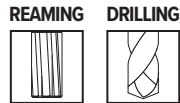


DA Back Up Screw
Page 241



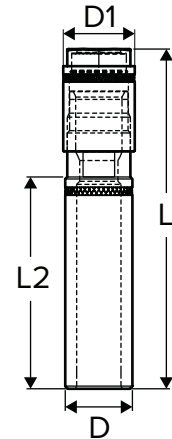
DA Nut
Page 241

DA COLLET CHUCK EXTENSION



DA COLLET CHUCK EXTENSIONS

Part Number	Collet Series	Collet Range	L	L1	L2	D	D1
010-EXT-100S	100DA	1/64-9/16"	4.92"	1.66"	3.00"	1"	1.06"
010-EXT-100	100DA	1/64-9/16"	7.48"	1.66"	5.50"	1"	1.06"
018-EXT-125S	180DA	3/64-3/4"	4.92"	1.83"	3.00"	1-1/4"	1.44"
018-EXT-125	180DA	3/64-3/4"	7.48"	1.83"	5.50"	1-1/4"	1.44"
020-EXT-750S	200DA	3/64-3/8"	4.72"	1.34"	3.00"	3/4"	0.86"
020-EXT-750	200DA	3/64-3/8"	7.09"	1.34"	5.50"	3/4"	0.86"
030-EXT-500S	300DA	3/64-1/4"	4.50"	1.18"	3.00"	1/2"	0.55"
030-EXT-500	300DA	3/64-1/4"	6.92"	1.18"	5.50"	1/2"	0.55"



Note: For light or medium milling, we recommend using ER or TG Collet Chucks. DA Collet Chucks are not designed for milling and can crack at the nose when overtightened or radial load is applied. Product warranty does not apply against cracking of collet, toolholder, or collet nut.



TG/DA COLLET CHUCKS

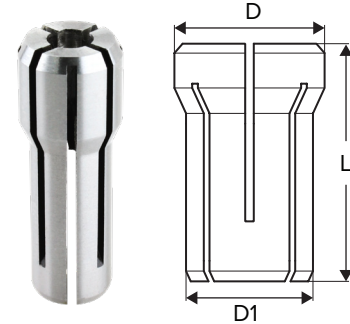


300DA & 200DA COLLETS

DA Collets collapse approximately 1/32"

DA COLLET DIMENSIONAL DATA

Style	D	D1	L	Collet Range	Nut Tightening Torque
300DA	0.375"	0.300"	1.000"	3/64-1/4"	18 ft.lbs
200DA	0.539"	0.453"	1.193"	3/64-3/8"	25 ft.lbs
100DA	0.769"	0.653"	1.441"	3/64-9/16"	35 ft.lbs
180DA	1.035"	0.873"	1.637"	3/64-3/4"	40 ft.lbs



300DA COLLETS

Size Range: 3/64" - 1/4"

Part Number	Size
030-003	3/64"
030-004	1/16"
030-005	5/64"
030-006	3/32"
030-007	7/64"
030-008	1/8"
030-009	9/64"
030-010	5/32"
030-011	11/64"
030-012	3/16"
030-013	13/64"
030-014	7/32"
030-015	15/64"
030-016	1/4"

200DA COLLETS

Size Range: 3/64" - 3/8"

Part Number	Size
020-003	3/64"
020-004	1/16"
020-005	5/64"
020-006	3/32"
020-007	7/64"
020-008	1/8"
020-009	9/64"
020-010	5/32"
020-011	11/64"
020-012	3/16"
020-013	13/64"
020-014	7/32"
020-015	15/64"
020-016	1/4"
020-017	17/64"
020-018	9/32"
020-019	19/64"
020-020	5/16"
020-021	21/64"
020-022	11/32"
020-023	23/64"
020-024	3/8"



TG/DA COLLET CHUCKS

300DA COLLETS SETS

Part Number	Size
030-SET-07	7 Piece 300DA Collet Set: 1/16 - 1/4" by 1/32nds
030-SET-09	9 Piece 300DA Collet Set: 1/8 - 1/4" by 1/64ths
030-SET-13	13 Piece 300DA Collet Set: 1/16 - 1/4" by 1/64ths
030-SET-14	14 Piece 300DA Collet Set: 3/64 - 1/4" by 1/64ths

200DA COLLETS SETS

Part Number	Size
020-SET-09	9 Piece 200DA Collet Set: 1/8 - 3/8" by 1/32nds
020-SET-11	11 Piece 200DA Collet Set: 1/16 - 3/8" by 1/32nds
020-SET-17	17 Piece 200DA Collet Set: 1/8 - 3/8" by 1/64ths
020-SET-21	21 Piece 200DA Collet Set: 1/16 - 3/8" by 1/64ths

100DA & 180DA COLLETS

DA collets collapse approximately 1/32"

100DA COLLETS

Size Range: 3/64" - 9/16"

Part Number	Size
010-003	3/64"
010-004	1/16"
010-005	5/64"
010-006	3/32"
010-007	7/64"
010-008	1/8"
010-009	9/64"
010-010	5/32"
010-011	11/64"
010-012	3/16"
010-013	13/64"
010-014	7/32"
010-015	15/64"
010-016	1/4"
010-017	17/64"
010-018	9/32"
010-019	19/64"
010-020	5/16"
010-021	21/64"
010-022	11/32"
010-023	23/64"
010-024	3/8"
010-025	25/64"
010-026	13/32"
010-027	27/64"
010-028	7/16"
010-029	29/64"
010-030	15/32"
010-031	31/64"
010-032	1/2"
010-033	33/64"
010-034	17/32"
010-035	35/64"
010-036	9/16"

Note: See dimensional data for DA collets on page 239.

180DA COLLETS

Size Range: 3/64" - 3/4"

Part Number	Size
018-003	3/64"
018-004	1/16"
018-005	5/64"
018-006	3/32"
018-007	7/64"
018-008	1/8"
018-009	9/64"
018-010	5/32"
018-011	11/64"
018-012	3/16"
018-013	13/64"
018-014	7/32"
018-015	15/64"
018-016	1/4"
018-017	17/64"
018-018	9/32"
018-019	19/64"
018-020	5/16"
018-021	21/64"
018-022	11/32"
018-023	23/64"
018-024	3/8"
018-025	25/64"
018-026	13/32"
018-027	27/64"
018-028	7/16"
018-029	29/64"
018-030	15/32"
018-031	31/64"
018-032	1/2"
018-033	33/64"
018-034	17/32"
018-035	35/64"
018-036	9/16"
018-037	37/64"
018-038	19/32"
018-039	39/64"
018-040	5/8"
018-041	41/64"
018-042	21/32"
018-043	43/64"
018-044	11/16"
018-045	45/64"
018-046	23/32"
018-047	47/64"
018-048	3/4"



100DA Collet

100DA COLLET SETS

010-SET-08	8 Piece 100DA Collet Set: 1/8 - 9/16" by 1/16ths
010-SET-11	11 Piece 100DA Collet Set: 1/4 - 9/16" by 1/32nds
010-SET-15	15 Piece 100DA Collet Set: 1/8 - 9/16" by 1/32nds
010-SET-17	17 Piece 100DA Collet Set: 1/16 - 9/16" by 1/32nds
010-SET-21	21 Piece 100DA Collet Sets: 1/4 - 9/16" by 1/64ths
010-SET-29	29 Piece 100DA Collet Set: 1/8 - 9/16" by 1/64ths
010-SET-33	33 Piece 100DA Collet Set: 1/16 - 9/16" by 1/64ths



180DA Collet

180DA COLLET SETS

018-SET-09	9 Piece 180DA Collet Set: 1/4 - 3/4" by 1/16ths
018-SET-17	17 Piece 180DA Collet Set: 1/4 - 3/4" by 1/32nds
018-SET-21	21 Piece 180DA Collet Set: 1/8 - 3/4" by 1/32nds
018-SET-33	33 Piece 180DA Collet Set: 1/4 - 3/4" by 1/64ths
018-SET-41	41 Piece 180DA Collet Set: 1/8 - 3/4" by 1/64ths



DA ACCESSORIES

REPLACEMENT NUT FOR DA COLLET CHUCK

Part Number	Description
100DA-NUT	100DA Nut
180DA-NUT	180DA Nut
200DA-NUT	200DA Nut
300DA-NUT	300DA Nut



REPLACEMENT BACK-UP SCREWS FOR DA COLLET CHUCK

Part Number	Description
100DA-3	Back-up screw for all CT, BT, NMTB 100DA Chucks
100DA-4	Back-up screw for 100DA Collet Chuck Extensions
180DA-3	Back-up screw for all CT, BT, 180DA Chucks
180DA-4	Back-up screw for 180DA Collet Chuck Extensions
200DA-3	Back-up screw for all CT, BT, NMTB 200DA Collet Chucks
200DA-4	Back-up screw for 200DA Collet Chuck Extensions
300DA-3	Back-up screw for all CT, BT, 300DA Collet Chucks
300DA-4	Back-up screw for 300DA Collet Chuck Extensions



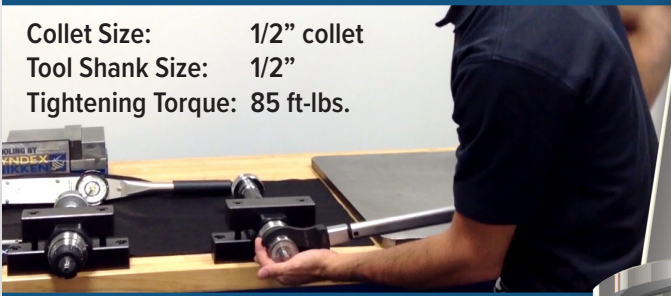
TORQUE TEST DEMOS

SEE THE DIFFERENCE IN TORQUE IN UNDER 10 MINUTES!

LYNDEX-NIKKEN

CAT40 ER32 High Torque Collet Chuck

Collet Size: 1/2" collet
Tool Shank Size: 1/2"
Tightening Torque: 85 ft-lbs.



Cutting tool GRIPS at 75 ft-lbs.

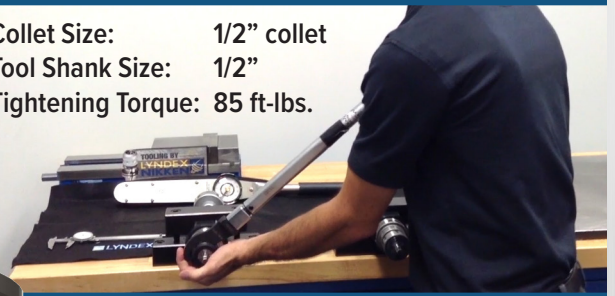


214% higher gripping force
than other brands!

OTHER BRANDS

CAT40 ER32 Collet Chuck

Collet Size: 1/2" collet
Tool Shank Size: 1/2"
Tightening Torque: 85 ft-lbs.

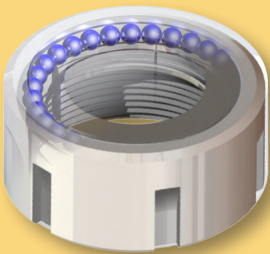


Cutting tool SLIPS at 35 ft-lbs.



YouTube

View our ER Torque test by viewing on
our YouTube channel. Not convinced?
Contact us for a live demo!



BENEFITS OF HIGHER GRIPPING FORCE

- Precision ground bearing nut for additional gripping force* (*nut included as standard)
- Machine with higher chip load and reduce cycle time
- Reduction in end mill pulling reduces scrapping parts
- Eliminate over tightening that can lead to collet damage and excessive run-out
- Better overall cutting condition

To schedule a demo, contact your Lyndex-Nikken Regional Sales
Manager OR send an e-mail to: solutionselling@lyndexnikken.com



847-367-4800 | sales@lyndexnikken.com
lyndexnikken.com

Connect With Us!

