

ANGLE HEADS/SPINDLE SPEEDER

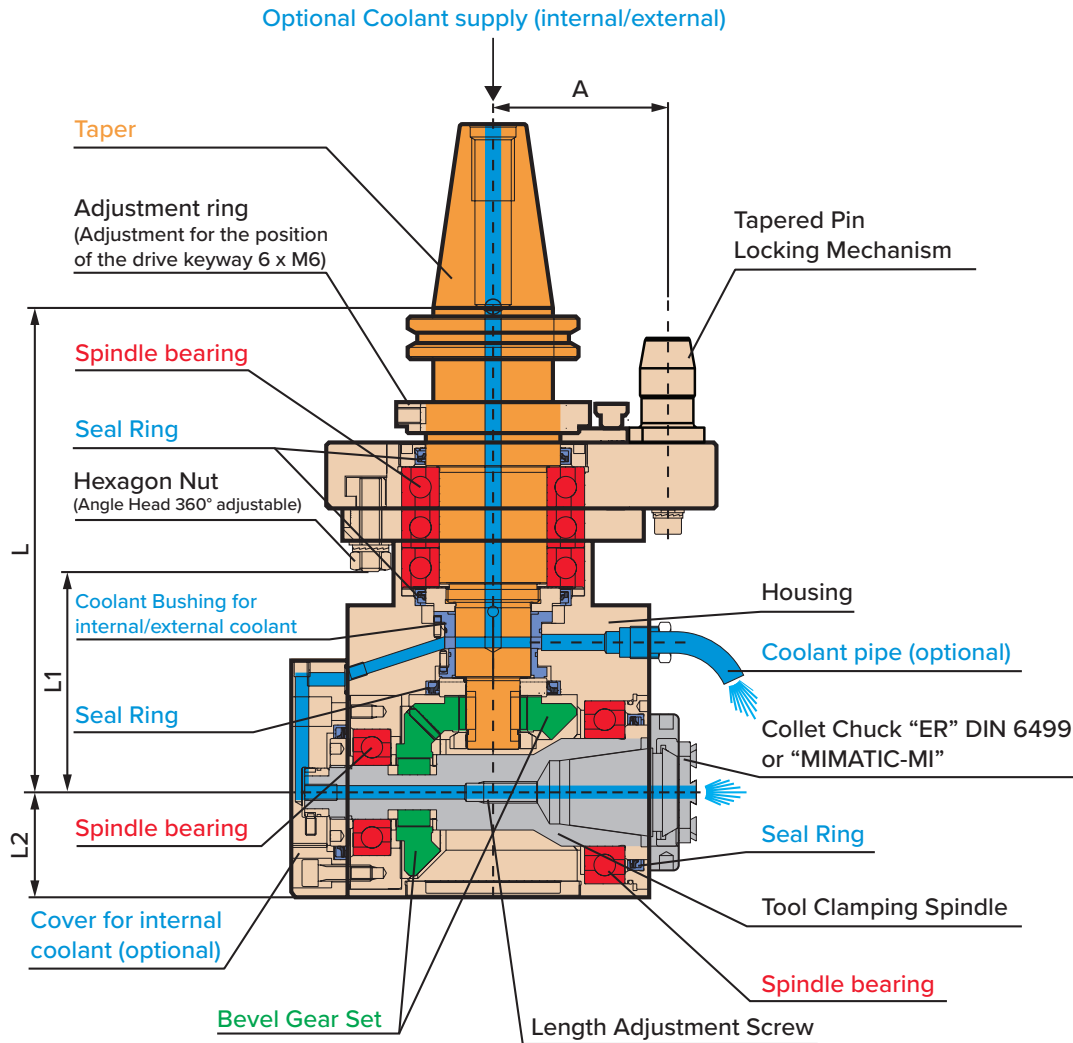


ANGLE HEADS/SPINDLE SPEEDER

ANGLE HEADS/ SPINDLE SPEEDER



TECHNICAL FEATURES



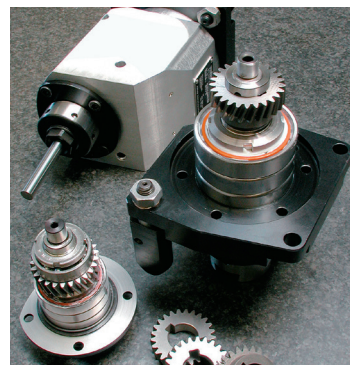
Our Angle Heads are equipped with hardened and ground gears and collet shafts. Units are also fitted with high-precision angular contact bearings, assuring extreme rigidity and accuracy. Compact designs maintain accurate spindle and tool centerline alignment while minimizing tool overhang - accuracy is maintained throughout the machining process from plane to plane.

Recessed Collet Seat



With our collet seat recessed into the body of the Angle Head, rigidity is optimized while maintaining a compact design.

High Precision Assembly



Our Angle Heads are assembled with high precision, P4 quality spindle bearings that are stabilized for high speeds up to 15,000 RPM and high torques up to 110 ft-lbs. The spiral beveled gears allow for high rigidity and smooth machining operations.

ANGLE HEADS/SPINDLE SPEEDER

TYPES OF FIXED ANGLE HEADS & SPINDLE SPEEDER



Standard Right Angle Heads



Offset Type Right Angle Heads



Economy 40 Taper Right Angle Heads



Slim Type Right Angle Heads



Twin Spindle Angle Heads



Universal Flexheads Internal Coolant



Quick Change Right Angle Heads
(Attachments sold separately)



Nikken Spindle Speeder
(Up to 20,000 RPM)



Check out the product catalog section on our website for more information and additional specifications on our Angle Heads and Spindle Speeder.



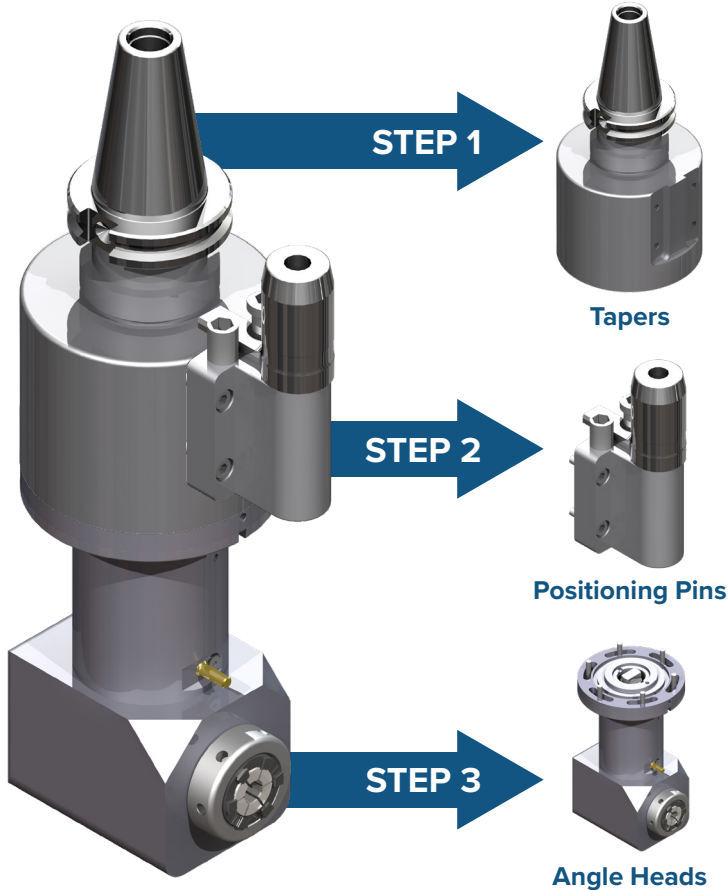
All Angle Heads come with a tapered positioning pin as standard



A flat pin can be made available upon request

MODULAR ANGLE HEAD ASSEMBLY

Construct a Modular Angle Head in 3 Easy Steps!



Modular Angle Head System Features

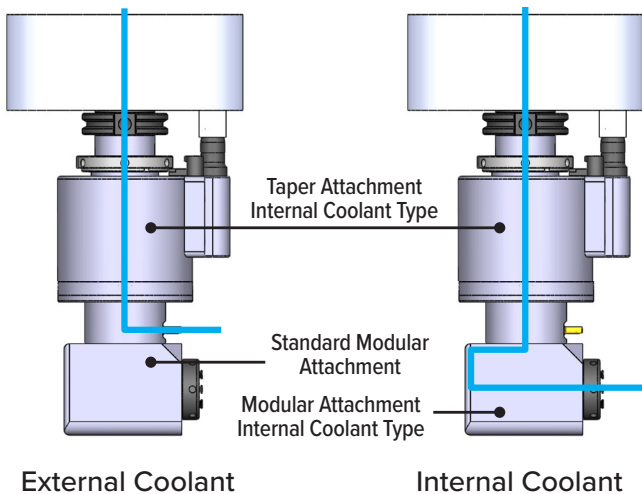
- Flexibility for a multitude of applications
- Adaptable with a wide variety of machine tapers
- Bolt style mounting system between taper and modular attachment for added rigidity
- Cost effective solution when Angle Heads are required on machines with different tapers
- 360 degree body and head rotation
- Tapered positioning pin for alignment accuracy

Modular Attachment Features

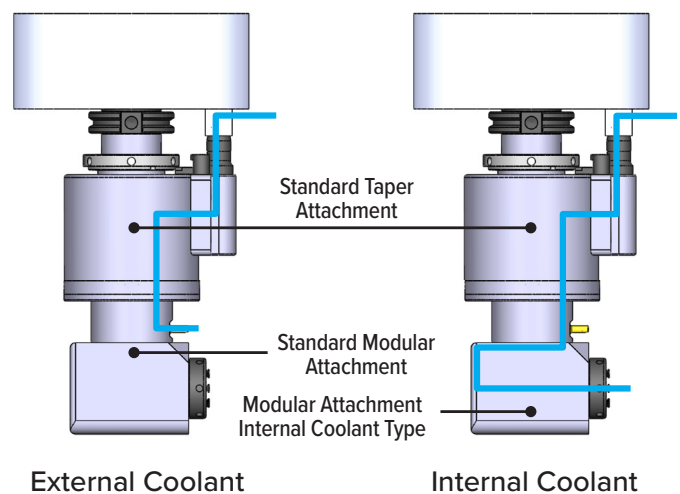
- Slim styles for inner bore work
- Stubby styles for added milling rigidity
- Extended Length styles for added reach
- Quick Change system for operations involving multiple tools
- Double output styles eliminate the necessity for two heads
- NSK output styles for small internal engraving and light duty drilling

COOLANT CONFIGURATIONS

Coolant Supply Through The Spindle



Coolant Supply Through The Positioning Block



ANGLE HEADS/SPINDLE SPEEDER

MODULAR ANGLE HEAD SYSTEM

Flexibility for Any Application!

TAPERS



TAPER EXTENSION



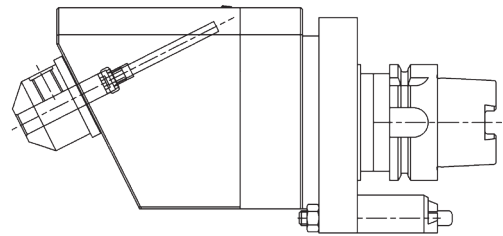
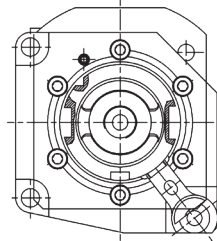
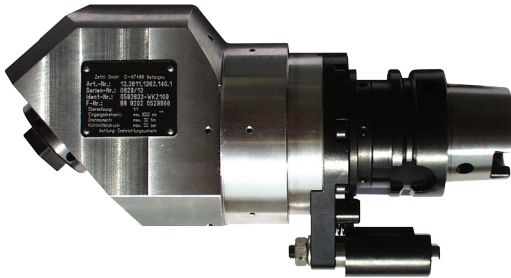
MODULAR ATTACHMENTS



HIGH PRODUCTIVITY ANGLE HEADS

Fixed Angle Heads

Fixed Angle Heads ensures an accurate angle without the need to adjust or verify the cutting angle. Ideal for families of parts with a common fixed angle or for high production where optimized rigidity is required to reduce cycle times.



Multi-Spindle Drill Heads

Ideal for high production operations where drilling speed and accuracy must be optimized; Lyndex-Nikken Multi-Spindle units can be designed for all materials, multiple drill sizes, and a varying number of output spindles to match your application.

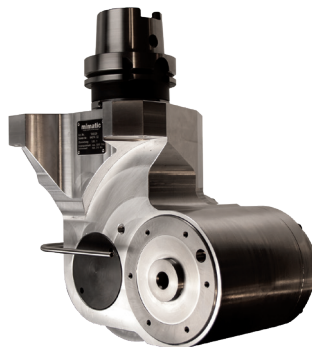


Special Angle Heads

From Gear Hobbing, Deep Bore Milling, High Torque Shell Mill Angle Heads, to High Speed Spindle Multiplier Angle Heads, we have your applications covered. Contact us for more details!



Saw Blade/Arbor Milling Head with additional support pins



Heavy Duty Offset Arbor Milling Head for diesel engine blocks



ER32 1-meter Extended Length Modular Tool with internal coolant



ER11 Extended Length Slim Line Angle Head for ID pocket milling



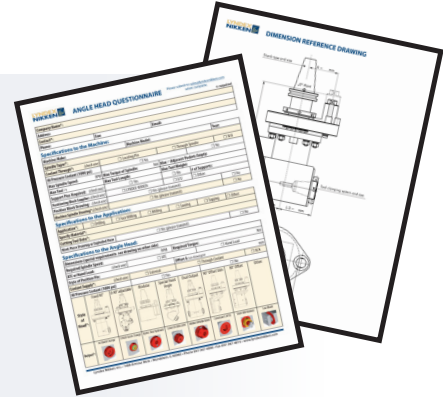
ENGINEERING SUPPORT

Complete Engineering Support from Start to Finish!

1

Selecting the Best Angle Head

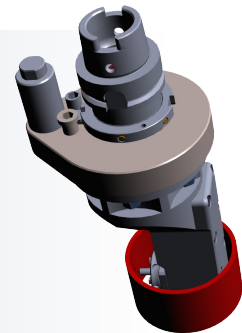
- Fill out our Angle Head Questionnaire.
- Provide dimensional and material information about your part via 3D model and/or CAD drawing.
- Additional information about the machine, current processes and cycle times are gathered.



2

Verification of Clearance and Application

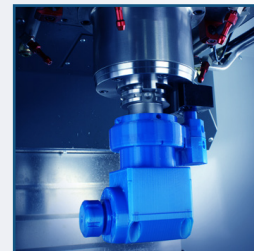
- 3D models of Angle Heads are used to verify internal motion in space-critical locations.
- Applications are qualified by determining torque calculations of the machining operation, and is verified again that the Angle Head can sustain the desired process.



3

Automatic Tool Change and Weight Confirmation

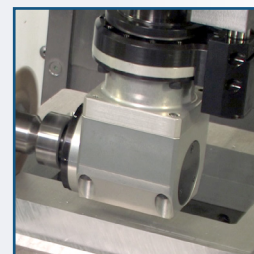
- ATC and weight clearances are confirmed.
- 3D printed Angle Heads and positioning blocks are available to ensure 100% dimensional accuracy and guarantees clearance while reducing cost and risk to the customer.



4

Selecting the Best Angle Head

- Additional support for positioning block design and integration of the unit are also available.
- Positioning blocks are made to specifications, ensuring that the Angle Head is positioned and locked into place during final installation.



SPECIAL CUSTOM POSITIONING BLOCK

**WHY RISK YOUR INVESTMENT?
WE HAVE YOU COVERED FROM DESIGN TO INSTALLATION!**

PRODUCT TRAINING SEMINARS

Receive in-depth training on the cutting edge solutions of our products to help maximize your profits and increase productivity.



SHRINK FIT UNITS & HOLDERS



ADVANCED TOOLHOLDERS



POWER CHUCKS & QUICK CHANGE FLEX COLLETS



LIVE TOOLING

IN-DEPTH TRAINING AND LIVE DEMOS



ANGLE HEADS

To schedule a demo, contact your Lyndex-Nikken Regional Sales Manager or send an e-mail to: solutionselling@lyndexnikken.com



847-367-4800 | sales@lyndexnikken.com
lyndexnikken.com

Connect With Us!

