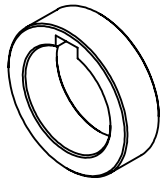


SPACERS	
THICKNESS	PART#
1/2"	SP1-1/4-1/2
3/8"	SP1-1/4-3/8
1/4"	SP1-1/4-1/4
1/8"	SP1-1/4-1/8



*ALL SPACERS ABOVE ARE INCLUDED WITH TOOL HOLDER

REVISIONS			
REV.	DESCRIPTION	DATE	APPROVED

NOTES:
NUT#: 1-1/4-STUBNUT

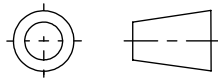
UNLESS OTHERWISE SPECIFIED:

DIMENSIONS ARE IN MM
[INCH]

DIMENSIONS ARE FOR
REFERENCE ONLY. DRAWING
IS SUBJECT TO CHANGE
WITHOUT FURTHER NOTICE.

INTERPRET GEOMETRIC
TOLERANCING PER: ASME Y 14.5M

THIRD ANGLE PROJECTION



NAME

DATE

DRAWN EB 11/29/18

CHECKED

ENG APPR.

MFG APPR.

Q.A.

PROPRIETARY AND CONFIDENTIAL

THE INFORMATION CONTAINED IN THIS
DRAWING IS THE SOLE PROPERTY OF
LYNDEX NIKKEN. ANY REPRODUCTION
IN PART OR AS A WHOLE WITHOUT THE
WRITTEN PERMISSION OF LYNDEX NIKKEN
IS PROHIBITED.

CAT50 1.1/4" STUB MILL HOLDER



SIZE A	DWG. NO. C5002-1250-6.29	REV
------------------	-----------------------------	-----

SCALE: 1/2	SHEET 1 OF 1
------------	--------------