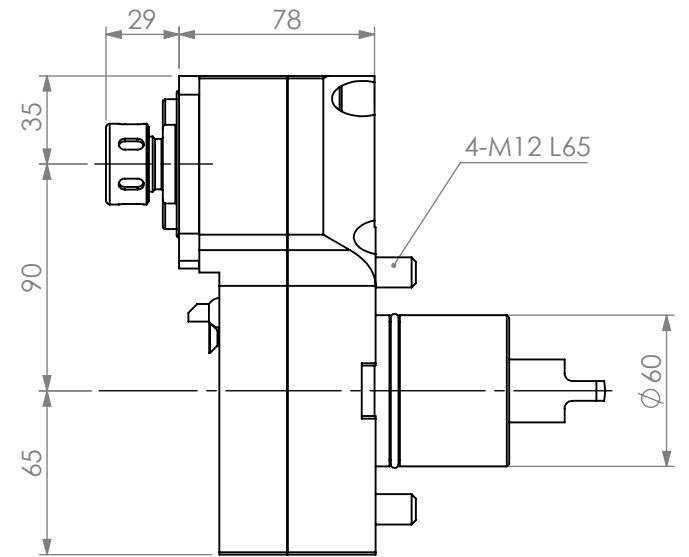


STRAIGHT LIVE OFFSET  
 OUTPUT: ER16 DUAL Y-AXIS  
 GEAR: 1/1  
 MAX RPM: 6000 RPM  
 COOLANT: EXTERNAL



ITEM	PART NO.	DESC.	QTY.
1	NA16	Bearing collet nut ER16	2
2	FK-4	Nut wrench	1
3	SP-41	Spindle wrench	1
4	G-55	Boss shank O-ring	1
5			

**PROPRIETARY AND CONFIDENTIAL**

THE INFORMATION CONTAINED IN THIS DRAWING IS THE SOLE PROPERTY OF LYNDEX NIKKEN. ANY REPRODUCTION IN PART OR AS A WHOLE WITHOUT THE WRITTEN PERMISSION OF LYNDEX NIKKEN IS PROHIBITED. DRAWING SUBJECT TO CHANGE WITHOUT NOTICE.

NAME	DATE
DRAWN BT	12/30/2020

NOTES:  
 Ref# T32267/ MSA01-63000

STRAIGHT LIVE TOOL ER16 OFFSET DUAL OUTPUT		
<b>LYNDEX NIKKEN</b>		
SIZE <b>A</b>	DWG. NO. MNL12-ER16Y-OFF-MD	REV.
SCALE 1:3	SHEET 1 OF 1	