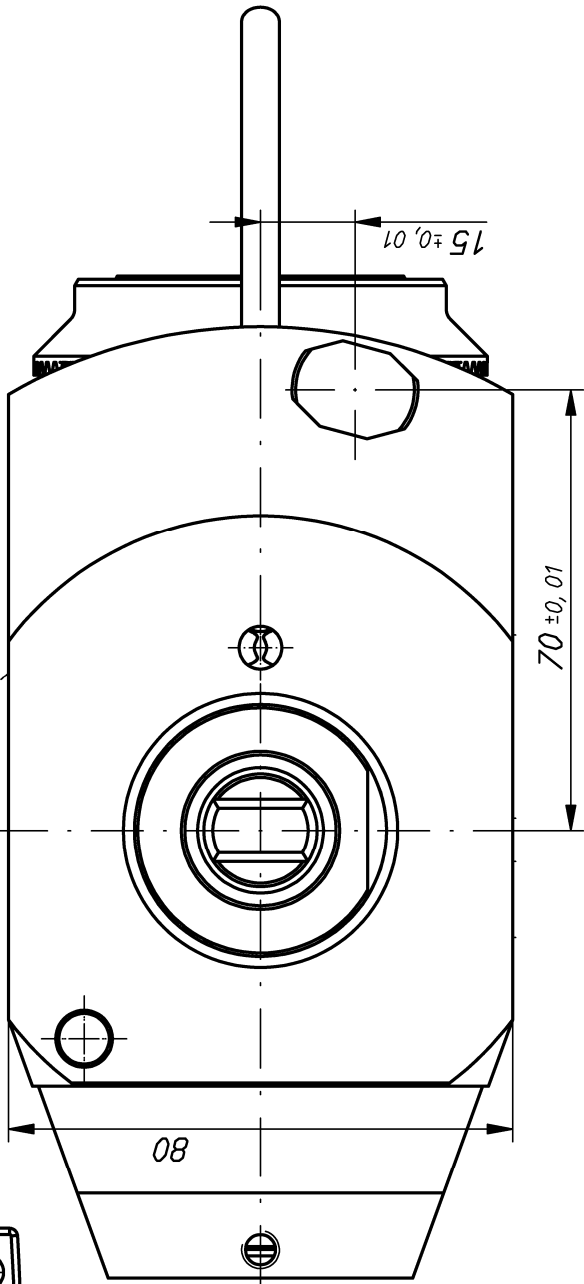
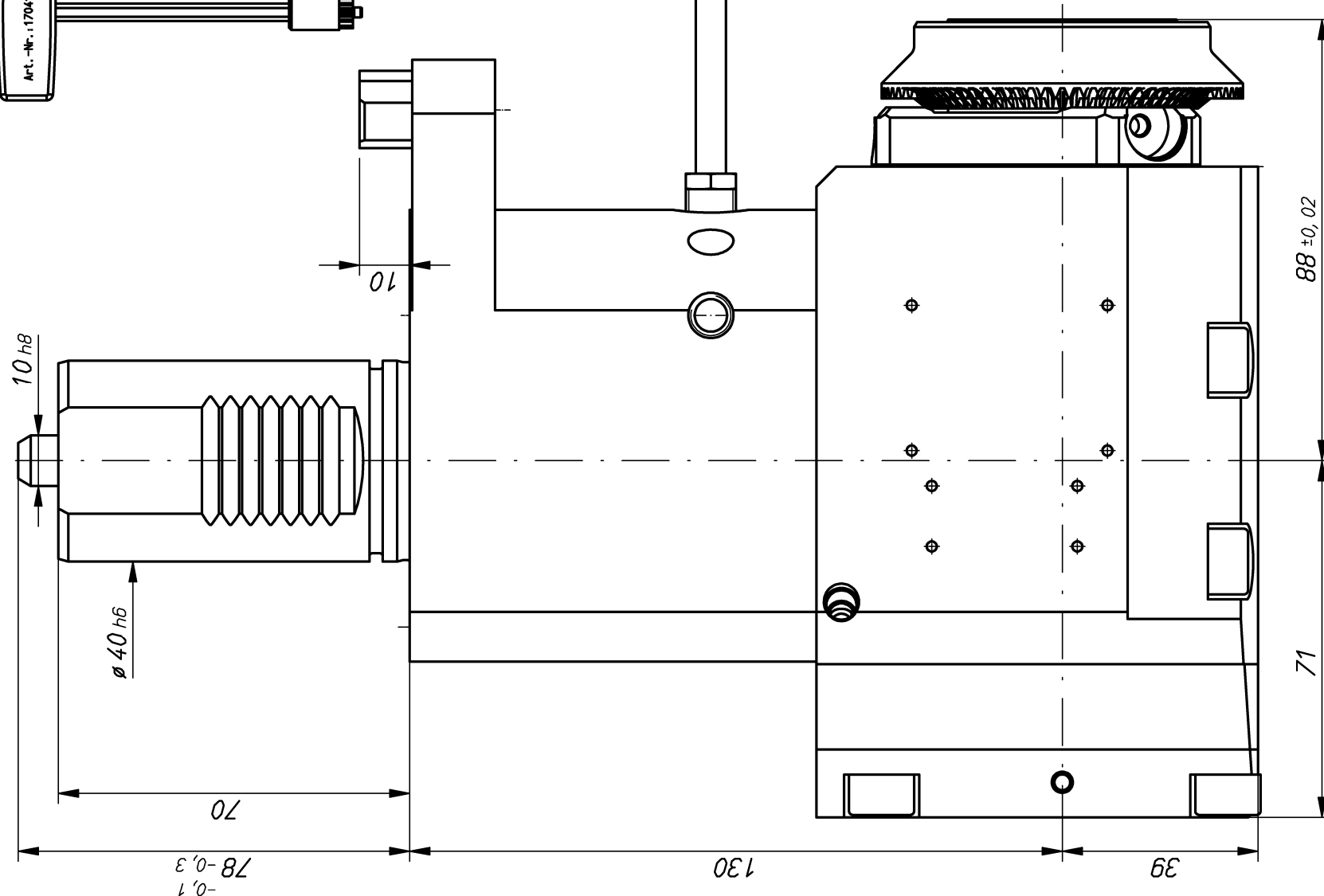
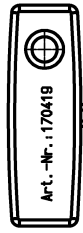


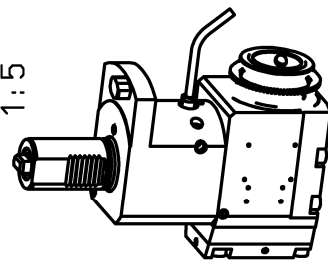
1:2



The construction is approved for manufacturing. Measures of the connected machine are checked. Please note signed modifications.

company	dep.	name	date

1:5



$n1(\max) = 6500 \text{ U/min}$
 $n2(\max) = 6500 \text{ U/min}$
 $M(\max) = 50 \text{ Nm}$
 $i(n1/n2) = 1 : 1$
 $p(\max) = 70 \text{ bar}$

Drehrichtungsumkehr
direction of rotation reversal

Kühlmittelzufuhr i.K. durch die Spindel
und e.K. über Spritzrohr
internal coolant supply through the spindle
and external coolant supply through pipes

Gewicht ca. 11kg
weight around 11kg

Only for information !
 When one change, the drawing does not interchange copyright at these designs and all supplements which are personally entrusted to the receiver remain at any time to our company. Without our written permission they may not be copied or multipletet. Also never third persons to be communicated or made accessible
 Fa. mimatic-Zettl GmbH

A124866	ID-Nr.	ZWN-IL	Allg. Tol.	Maßstab	1:1
A05.1611.7141.MI50			ISO 2768-m	Werkstoff:	Maßblatt
	manuelle Änderung		01.07.2014		
		Datum	Name		
		Bearb.	Krapp		
		Gepr.	Aniser		
		Norm			
		Abw. C:	00105049.SZA		
03	KMR austauscht	01.07.2014	Anise		
02	Getz/Deckel geü. Maßß	04.10.2011	Holz		
01	Umbau auf M-Einhand	04.12.2009	Dorn		
Zust.	Änderung	Datum	Name	Ur-spr.	00004920/00020540
				Ers. f.:	

mimatic
 T o o l s y s t e m s
 mimatic 87488 Betzigau – Westendstraße 3
 GmbH Tel.: 0831/57444-0 Fax.: -90
 AGW-MA-C-40-MI50-I Blatt
 Ers. d.: Pilotserver Bl.